

## Home data report

2307 Leonard Court, Arlington, Tarrant County, Texas, United States, 76015



**Total Area: 1705 sq. ft**

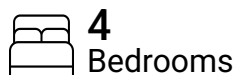
1st Floor: 1705 sq. ft

Excluded: Garage 413 sq. ft, Porch 138 sq. ft, Patio 793 sq. ft, Utility 9 sq. ft, Fireplace 13 sq. ft, Walls: 128 sq. ft

## Property summary



**1** Floors



**4** Bedrooms



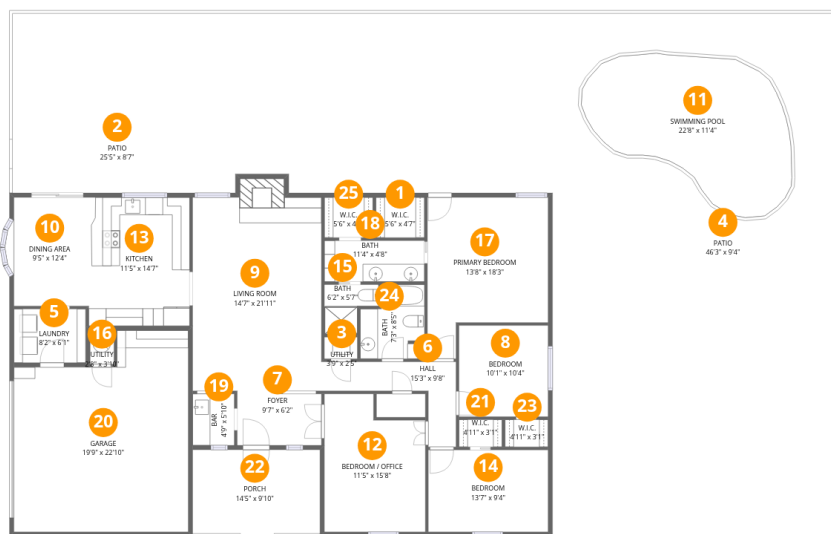
**2** Bathrooms



**1** Garages

# Home data report

## 2307 Leonard Court, Arlington, Tarrant County, Texas, United States, 76015



### Room dimensions

Floor 1

Total:1705sqft

Excluded: 1366sqft

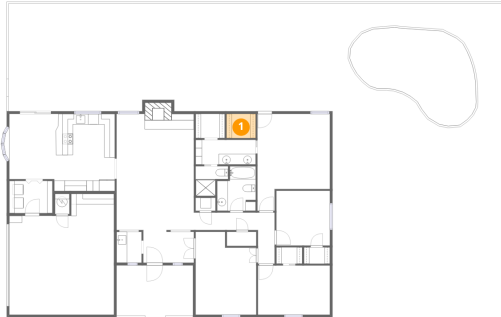
#		Dimensions	sqft	Counted as living area
1	W.I.C.	5'6" x 4'7"	25 sq. ft	Yes
2	Patio	25'5" x 8'7"	217 sq. ft	No
3	Utility	3'9" x 2'5"	9 sq. ft	No
4	Patio	46'3" x 9'4"	433 sq. ft	No
5	Laundry	8'2" x 6'1"	49 sq. ft	Yes
6	Hall	15'3" x 9'8"	147 sq. ft	Yes
7	Foyer	9'7" x 6'2"	59 sq. ft	Yes
8	Bedroom	10'1" x 10'4"	104 sq. ft	Yes
9	Living Room	14'7" x 21'11"	320 sq. ft	Yes
10	Dining Area	9'5" x 12'4"	116 sq. ft	Yes
11	Swimming Pool	22'8" x 11'4"	257 sq. ft	No

Home data report

**2307 Leonard Court, Arlington, Tarrant County, Texas, United States, 76015**

#		Dimensions	sqft	Counted as living area
12	Bedroom / Office	11'5" x 15'8"	179 sq. ft	Yes
13	Kitchen	11'5" x 14'7"	167 sq. ft	Yes
14	Bedroom	13'7" x 9'4"	126 sq. ft	Yes
15	Bath	6'2" x 5'7"	34 sq. ft	Yes
16	Utility	2'8" x 3'10"	10 sq. ft	Yes
17	Primary Bedroom	13'8" x 18'3"	250 sq. ft	Yes
18	Bath	11'4" x 4'8"	53 sq. ft	Yes
19	Bar	4'9" x 5'10"	28 sq. ft	Yes
20	Garage	19'9" x 22'10"	451 sq. ft	No
21	W.I.C.	4'11" x 3'1"	15 sq. ft	Yes
22	Porch	14'5" x 9'10"	142 sq. ft	No
23	W.I.C.	4'11" x 3'1"	15 sq. ft	Yes
24	Bath	7'3" x 8'5"	61 sq. ft	Yes
25	W.I.C.	5'6" x 4'7"	25 sq. ft	Yes

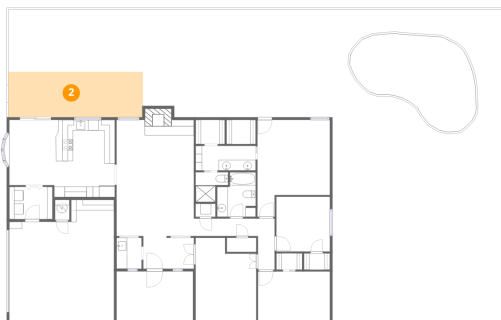
### 1 Floor 1 - W.I.C.



Dimensions: 5'6" x 4'7"  
Area: 25 sq. ft  
Counted as living area: Yes

Heated: Yes  
Finished: Yes  
Enclosed: Yes  
Contiguous: Yes  
Permitted: Yes  
Wet space: No  
Addition: No  
Conversion: No

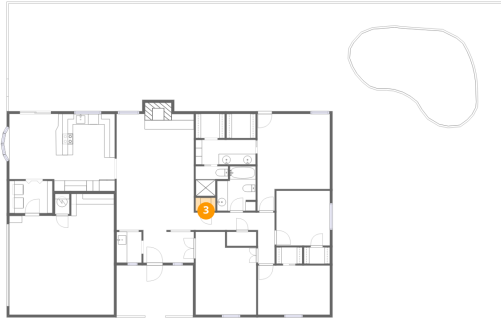
### 2 Floor 1 - Patio



Dimensions: 25'5" x 8'7"  
Area: 217 sq. ft  
Counted as living area: No

Heated: No  
Finished: No  
Enclosed: No  
Contiguous: Yes  
Permitted: Yes  
Wet space: No  
Addition: No  
Conversion: No

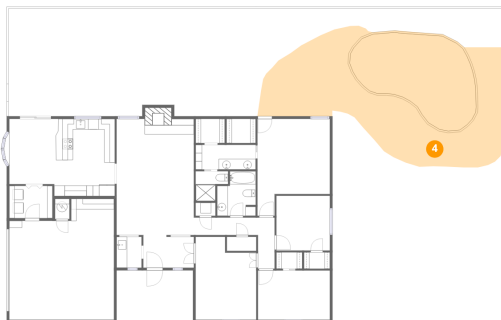
### 3 Floor 1 - Utility



Dimensions: 3'9" x 2'5"  
Area: 9 sq. ft  
Counted as living area: No

Heated: Yes  
Finished: No  
Enclosed: Yes  
Contiguous: Yes  
Permitted: Yes  
Wet space: No  
Addition: No  
Conversion: No

### 4 Floor 1 - Patio



Dimensions: 46'3" x 9'4"  
Area: 433 sq. ft  
Counted as living area: No

Heated: No  
Finished: No  
Enclosed: No  
Contiguous: Yes  
Permitted: Yes  
Wet space: No  
Addition: No  
Conversion: No

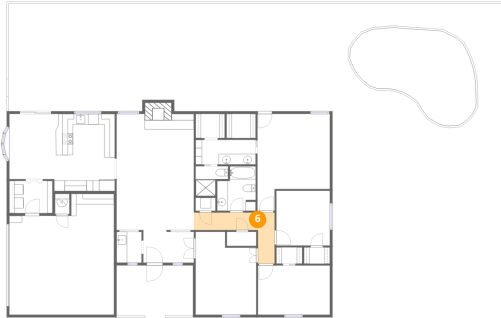
### 5 Floor 1 - Laundry



Dimensions: 8'2" x 6'1"  
Area: 49 sq. ft  
Counted as living area: Yes

Heated: Yes  
Finished: Yes  
Enclosed: Yes  
Contiguous: Yes  
Permitted: Yes  
Wet space: No  
Addition: No  
Conversion: No

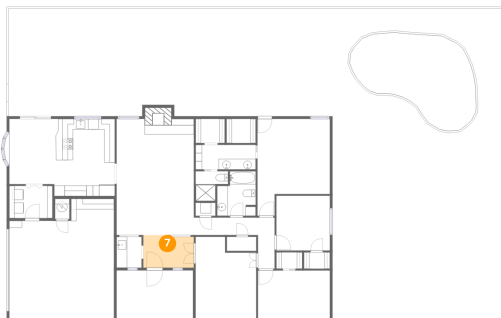
**6** Floor 1 - Hall



Dimensions: 15'3" x 9'8"  
Area: 147 sq. ft  
Counted as living area: Yes

Heated: Yes  
Finished: Yes  
Enclosed: Yes  
Contiguous: Yes  
Permitted: Yes  
Wet space: No  
Addition: No  
Conversion: No

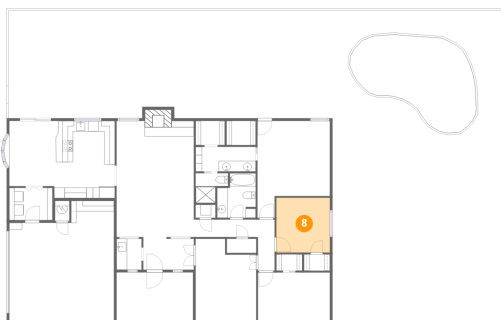
**7** Floor 1 - Foyer



Dimensions: 9'7" x 6'2"  
Area: 59 sq. ft  
Counted as living area: Yes

Heated: Yes  
Finished: Yes  
Enclosed: Yes  
Contiguous: Yes  
Permitted: Yes  
Wet space: No  
Addition: No  
Conversion: No

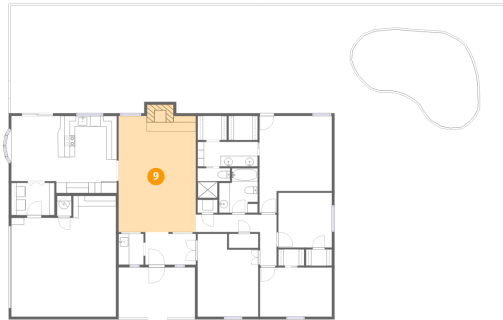
**8** Floor 1 - Bedroom



Dimensions: 10'1" x 10'4"  
Area: 104 sq. ft  
Counted as living area: Yes

Heated: Yes  
Finished: Yes  
Enclosed: Yes  
Contiguous: Yes  
Permitted: Yes  
Wet space: No  
Addition: No  
Conversion: No

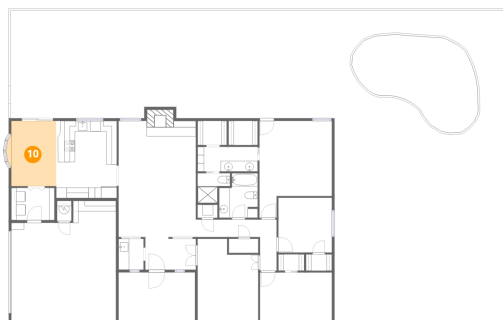
### 9 Floor 1 - Living Room



Dimensions: 14'7" x 21'11"  
Area: 320 sq. ft  
Counted as living area: Yes

Heated: Yes  
Finished: Yes  
Enclosed: Yes  
Contiguous: Yes  
Permitted: Yes  
Wet space: No  
Addition: No  
Conversion: No

### 10 Floor 1 - Dining Area



Dimensions: 9'5" x 12'4"  
Area: 116 sq. ft  
Counted as living area: Yes

Heated: Yes  
Finished: Yes  
Enclosed: Yes  
Contiguous: Yes  
Permitted: Yes  
Wet space: No  
Addition: No  
Conversion: No

### 11 Floor 1 - Swimming Pool



Dimensions: 22'8" x 11'4"  
Area: 257 sq. ft  
Counted as living area: No

Heated: No  
Finished: No  
Enclosed: No  
Contiguous: Yes  
Permitted: No  
Wet space: No  
Addition: No  
Conversion: No

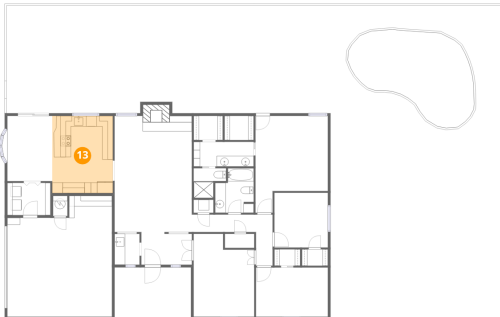
**12** Floor 1 - Bedroom / Office



Dimensions: 11'5" x 15'8"  
Area: 179 sq. ft  
Counted as living area: Yes

Heated: Yes  
Finished: Yes  
Enclosed: Yes  
Contiguous: Yes  
Permitted: Yes  
Wet space: No  
Addition: No  
Conversion: No

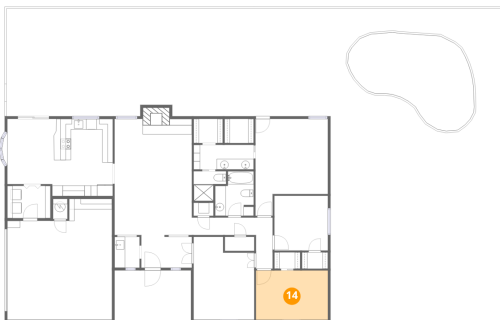
**13** Floor 1 - Kitchen



Dimensions: 11'5" x 14'7"  
Area: 167 sq. ft  
Counted as living area: Yes

Heated: Yes  
Finished: Yes  
Enclosed: Yes  
Contiguous: Yes  
Permitted: Yes  
Wet space: No  
Addition: No  
Conversion: No

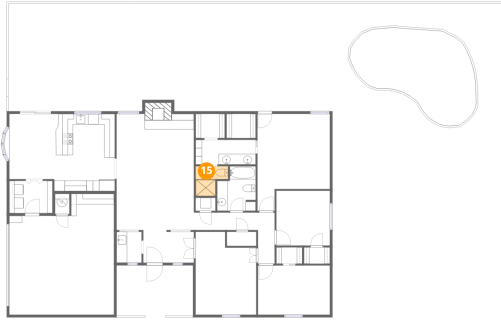
**14** Floor 1 - Bedroom



Dimensions: 13'7" x 9'4"  
Area: 126 sq. ft  
Counted as living area: Yes

Heated: Yes  
Finished: Yes  
Enclosed: Yes  
Contiguous: Yes  
Permitted: Yes  
Wet space: No  
Addition: No  
Conversion: No

**15** Floor 1 - Bath



Dimensions: 6'2" x 5'7"  
Area: 34 sq. ft  
Counted as living area: Yes

Heated: Yes  
Finished: Yes  
Enclosed: Yes  
Contiguous: Yes  
Permitted: Yes  
Wet space: Yes  
Addition: No  
Conversion: No

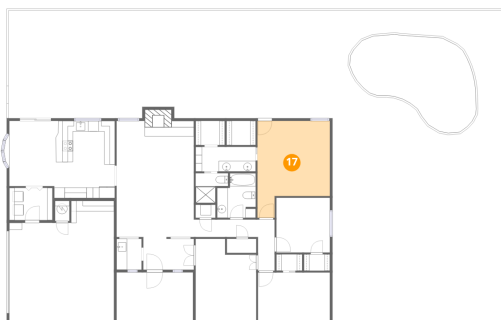
**16** Floor 1 - Utility



Dimensions: 2'8" x 3'10"  
Area: 10 sq. ft  
Counted as living area: No

Heated: Yes  
Finished: No  
Enclosed: Yes  
Contiguous: Yes  
Permitted: Yes  
Wet space: No  
Addition: No  
Conversion: No

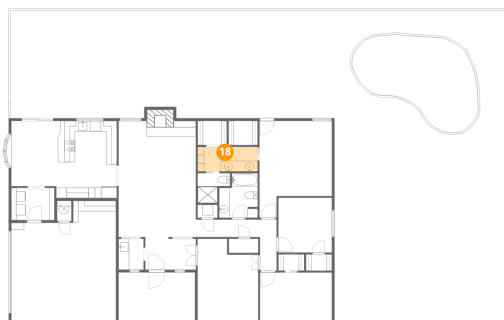
**17** Floor 1 - Primary Bedroom



Dimensions: 13'8" x 18'3"  
Area: 250 sq. ft  
Counted as living area: Yes

Heated: Yes  
Finished: Yes  
Enclosed: Yes  
Contiguous: Yes  
Permitted: Yes  
Wet space: No  
Addition: No  
Conversion: No

**18** Floor 1 - Bath



Dimensions: 11'4" x 4'8"  
Area: 53 sq. ft  
Counted as living area: Yes

Heated: Yes  
Finished: Yes  
Enclosed: Yes  
Contiguous: Yes  
Permitted: Yes  
Wet space: Yes  
Addition: No  
Conversion: No

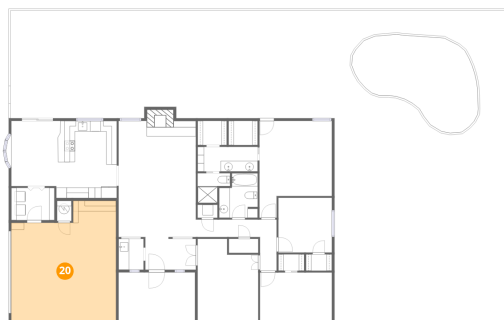
**19** Floor 1 - Bar



Dimensions: 4'9" x 5'10"  
Area: 28 sq. ft  
Counted as living area: Yes

Heated: Yes  
Finished: Yes  
Enclosed: Yes  
Contiguous: Yes  
Permitted: Yes  
Wet space: No  
Addition: No  
Conversion: No

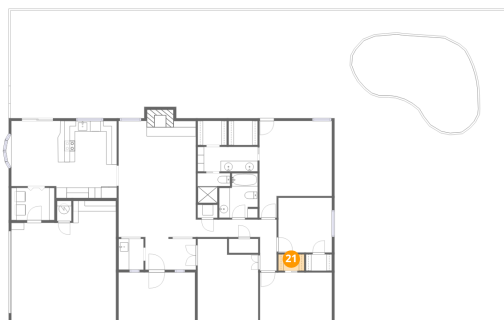
**20** Floor 1 - Garage



Dimensions: 19'9" x 22'10"  
Area: 451 sq. ft  
Counted as living area: No

Heated: No  
Finished: No  
Enclosed: Yes  
Contiguous: Yes  
Permitted: Yes  
Wet space: No  
Addition: No  
Conversion: No

**21** Floor 1 - W.I.C.



Dimensions: 4'11" x 3'1"  
Area: 15 sq. ft  
Counted as living area: Yes

Heated: Yes  
Finished: Yes  
Enclosed: Yes  
Contiguous: Yes  
Permitted: Yes  
Wet space: No  
Addition: No  
Conversion: No

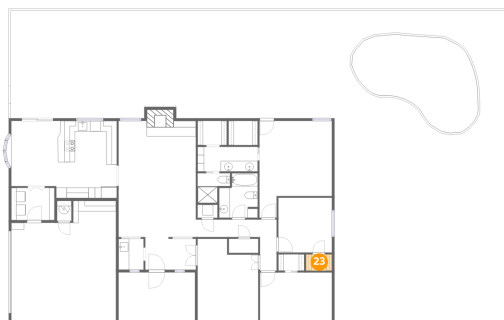
**22** Floor 1 - Porch



Dimensions: 14'5" x 9'10"  
Area: 142 sq. ft  
Counted as living area: No

Heated: No  
Finished: No  
Enclosed: No  
Contiguous: Yes  
Permitted: Yes  
Wet space: No  
Addition: No  
Conversion: No

**23** Floor 1 - W.I.C.

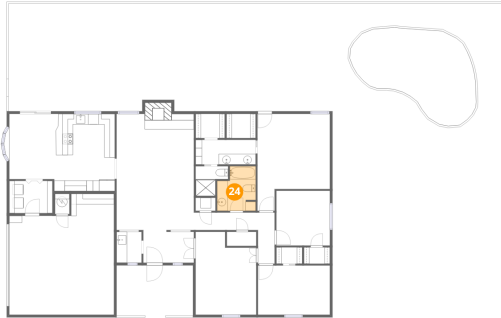


Dimensions: 4'11" x 3'1"  
Area: 15 sq. ft  
Counted as living area: Yes

Heated: Yes  
Finished: Yes  
Enclosed: Yes  
Contiguous: Yes  
Permitted: Yes  
Wet space: No  
Addition: No  
Conversion: No

2307 Leonard Court, Arlington, Tarrant County, Texas, United States, 76015

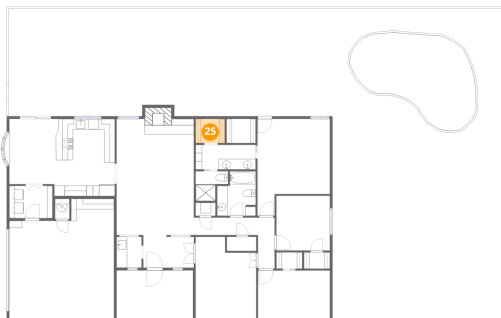
**24** Floor 1 - Bath



Dimensions: 7'3" x 8'5"  
Area: 61 sq. ft  
Counted as living area: Yes

Heated: Yes  
Finished: Yes  
Enclosed: Yes  
Contiguous: Yes  
Permitted: Yes  
Wet space: Yes  
Addition: No  
Conversion: No

**25** Floor 1 - W.I.C.



Dimensions: 5'6" x 4'7"  
Area: 25 sq. ft  
Counted as living area: Yes

Heated: Yes  
Finished: Yes  
Enclosed: Yes  
Contiguous: Yes  
Permitted: Yes  
Wet space: No  
Addition: No  
Conversion: No