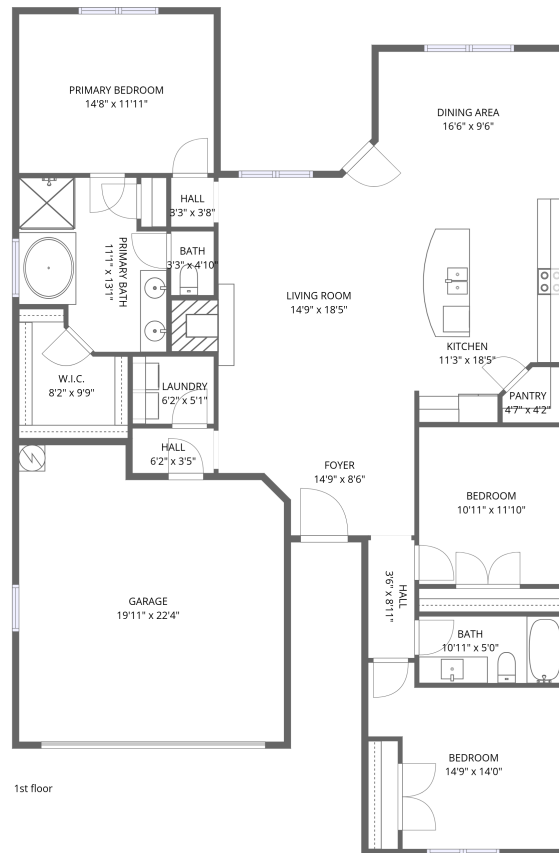


Home data report

1306 East Apache Trail, Granbury, Hood County, Texas, United States, 76048



Total Area: 1650 sq. ft

1st Floor: 1650 sq. ft

Excluded: Garage 413 sq. ft, Walls: 142 sq. ft

Property summary



1 Floors



3 Bedrooms



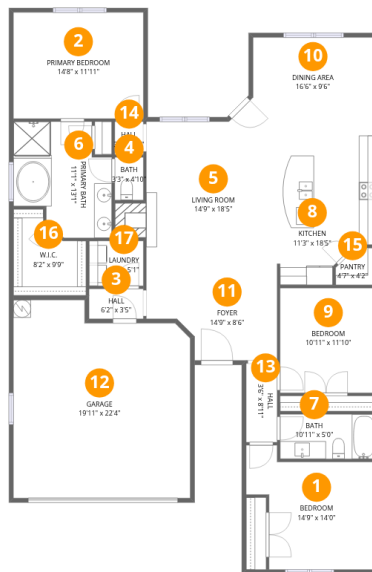
2 Bathrooms



1 Garages

Home data report

1306 East Apache Trail, Granbury, Hood County, Texas, United States, 76048



Room dimensions

Floor 1

Total:1650sqft Excluded: 413sqft

#		Dimensions	sqft	Counted as living area
1	Bedroom	14'9" x 14'0"	206 sq. ft	Yes
2	Primary Bedroom	14'8" x 11'11"	175 sq. ft	Yes
3	Hall	6'2" x 3'5"	21 sq. ft	Yes
4	Bath	3'3" x 4'10"	16 sq. ft	Yes
5	Living Room	14'9" x 18'5"	272 sq. ft	Yes
6	Primary Bath	11'1" x 13'1"	146 sq. ft	Yes
7	Bath	10'11" x 5'0"	55 sq. ft	Yes
8	Kitchen	11'3" x 18'5"	206 sq. ft	Yes
9	Bedroom	10'11" x 11'10"	129 sq. ft	Yes
10	Dining Area	16'6" x 9'6"	156 sq. ft	Yes
11	Foyer	14'9" x 8'6"	126 sq. ft	Yes

Home data report

1306 East Apache Trail, Granbury, Hood County, Texas, United States, 76048

#		Dimensions	sqft	Counted as living area
12	Garage	19'11" x 22'4"	445 sq. ft	No
13	Hall	3'6" x 8'11"	31 sq. ft	Yes
14	Hall	3'3" x 3'8"	12 sq. ft	Yes
15	Pantry	4'7" x 4'2"	19 sq. ft	Yes
16	W.I.C.	8'2" x 9'9"	80 sq. ft	Yes
17	Laundry	6'2" x 5'1"	31 sq. ft	Yes

1306 East Apache Trail, Granbury, Hood County, Texas, United States, 76048

1 Floor 1 - Bedroom



Dimensions: 14'9" x 14'0"
Area: 206 sq. ft
Counted as living area: Yes

Heated: Yes
Finished: Yes
Enclosed: Yes
Contiguous: Yes
Permitted: Yes
Wet space: No
Addition: No
Conversion: No

2 Floor 1 - Primary Bedroom



Dimensions: 14'8" x 11'11"
Area: 175 sq. ft
Counted as living area: Yes

Heated: Yes
Finished: Yes
Enclosed: Yes
Contiguous: Yes
Permitted: Yes
Wet space: No
Addition: No
Conversion: No

1306 East Apache Trail, Granbury, Hood County, Texas, United States, 76048

3 Floor 1 - Hall



Dimensions: 6'2" x 3'5"
Area: 21 sq. ft
Counted as living area: Yes

Heated: Yes
Finished: Yes
Enclosed: Yes
Contiguous: Yes
Permitted: Yes
Wet space: No
Addition: No
Conversion: No

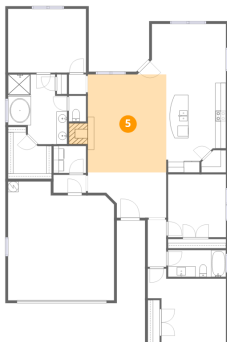
4 Floor 1 - Bath



Dimensions: 3'3" x 4'10"
Area: 16 sq. ft
Counted as living area: Yes

Heated: Yes
Finished: Yes
Enclosed: Yes
Contiguous: Yes
Permitted: Yes
Wet space: Yes
Addition: No
Conversion: No

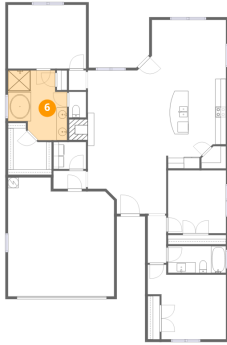
5 Floor 1 - Living Room



Dimensions: 14'9" x 18'5"
Area: 272 sq. ft
Counted as living area: Yes

Heated: Yes
Finished: Yes
Enclosed: Yes
Contiguous: Yes
Permitted: Yes
Wet space: No
Addition: No
Conversion: No

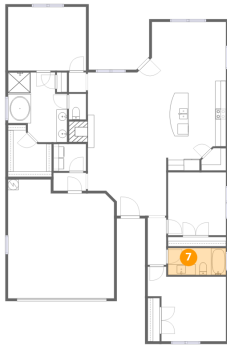
6 Floor 1 - Primary Bath



Dimensions: 11'1" x 13'1"
Area: 146 sq. ft
Counted as living area: Yes

Heated: Yes
Finished: Yes
Enclosed: Yes
Contiguous: Yes
Permitted: Yes
Wet space: Yes
Addition: No
Conversion: No

7 Floor 1 - Bath



Dimensions: 10'11" x 5'0"
Area: 55 sq. ft
Counted as living area: Yes

Heated: Yes
Finished: Yes
Enclosed: Yes
Contiguous: Yes
Permitted: Yes
Wet space: Yes
Addition: No
Conversion: No

8 Floor 1 - Kitchen

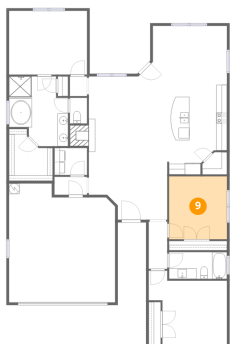


Dimensions: 11'3" x 18'5"
Area: 206 sq. ft
Counted as living area: Yes

Heated: Yes
Finished: Yes
Enclosed: Yes
Contiguous: Yes
Permitted: Yes
Wet space: No
Addition: No
Conversion: No

1306 East Apache Trail, Granbury, Hood County, Texas, United States, 76048

9 Floor 1 - Bedroom



Dimensions: 10'11" x 11'10"
Area: 129 sq. ft
Counted as living area: Yes

Heated: Yes
Finished: Yes
Enclosed: Yes
Contiguous: Yes
Permitted: Yes
Wet space: No
Addition: No
Conversion: No

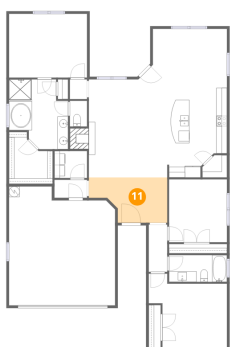
10 Floor 1 - Dining Area



Dimensions: 16'6" x 9'6"
Area: 156 sq. ft
Counted as living area: Yes

Heated: Yes
Finished: Yes
Enclosed: Yes
Contiguous: Yes
Permitted: Yes
Wet space: No
Addition: No
Conversion: No

11 Floor 1 - Foyer

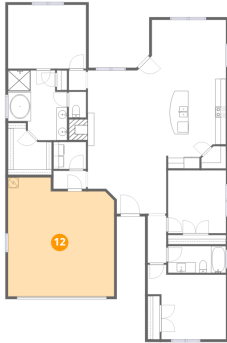


Dimensions: 14'9" x 8'6"
Area: 126 sq. ft
Counted as living area: Yes

Heated: Yes
Finished: Yes
Enclosed: Yes
Contiguous: Yes
Permitted: Yes
Wet space: No
Addition: No
Conversion: No

1306 East Apache Trail, Granbury, Hood County, Texas, United States, 76048

12 Floor 1 - Garage



Dimensions: 19'11" x 22'4"
Area: 445 sq. ft
Counted as living area: No

Heated: No
Finished: No
Enclosed: Yes
Contiguous: Yes
Permitted: Yes
Wet space: No
Addition: No
Conversion: No

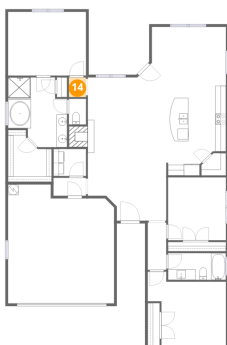
13 Floor 1 - Hall



Dimensions: 3'6" x 8'11"
Area: 31 sq. ft
Counted as living area: Yes

Heated: Yes
Finished: Yes
Enclosed: Yes
Contiguous: Yes
Permitted: Yes
Wet space: No
Addition: No
Conversion: No

14 Floor 1 - Hall



Dimensions: 3'3" x 3'8"
Area: 12 sq. ft
Counted as living area: Yes

Heated: Yes
Finished: Yes
Enclosed: Yes
Contiguous: Yes
Permitted: Yes
Wet space: No
Addition: No
Conversion: No

1306 East Apache Trail, Granbury, Hood County, Texas, United States, 76048

15 Floor 1 - Pantry



Dimensions: 4'7" x 4'2"
Area: 19 sq. ft
Counted as living area: Yes

Heated: Yes
Finished: Yes
Enclosed: Yes
Contiguous: Yes
Permitted: Yes
Wet space: No
Addition: No
Conversion: No

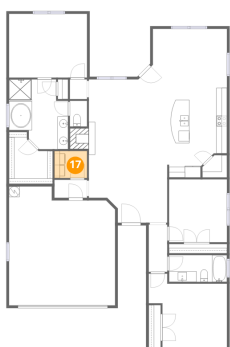
16 Floor 1 - W.I.C.



Dimensions: 8'2" x 9'9"
Area: 80 sq. ft
Counted as living area: Yes

Heated: Yes
Finished: Yes
Enclosed: Yes
Contiguous: Yes
Permitted: Yes
Wet space: No
Addition: No
Conversion: No

17 Floor 1 - Laundry



Dimensions: 6'2" x 5'1"
Area: 31 sq. ft
Counted as living area: Yes

Heated: Yes
Finished: Yes
Enclosed: Yes
Contiguous: Yes
Permitted: Yes
Wet space: No
Addition: No
Conversion: No