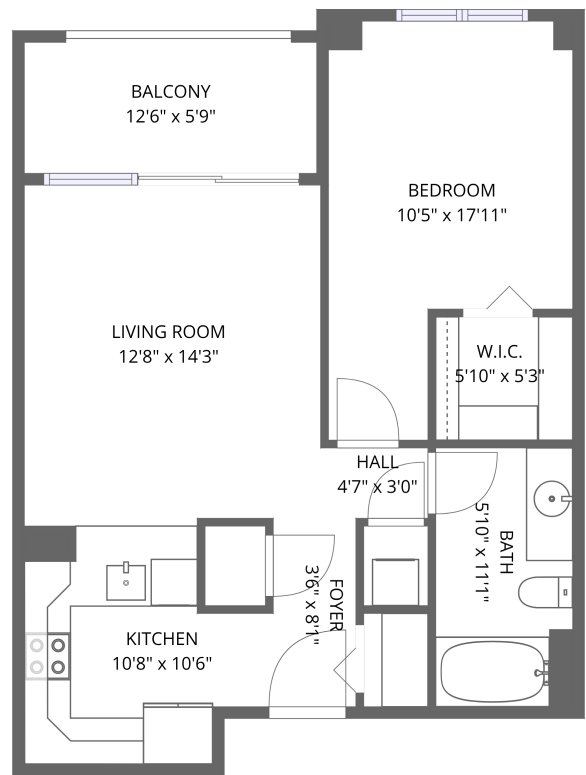


345 Bayshore Boulevard, Hyde Park North, Tampa, Hillsborough County, Florida, United States, 33606, 603



1st floor


Total Area: 618 sq. ft

1st Floor: 618 sq. ft

Excluded: Balcony 72 sq. ft, Walls: 0 sq. ft

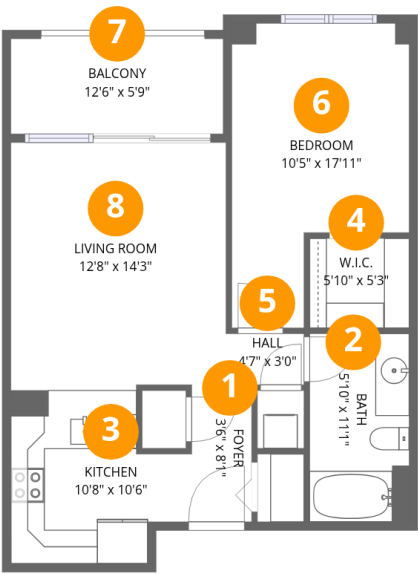
Property summary

 1 Floors

 1 Bedrooms

 1 Bathrooms

345 Bayshore Boulevard, Hyde Park North, Tampa, Hillsborough County, Florida, United States, 33606, 603

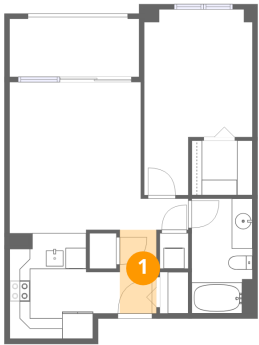


Room dimensions

Floor 1 Total:618sqft   Excluded: 72sqft

#		Dimensions	sqft	Counted as living area
1	Foyer	3'6" x 8'1"	29 sq. ft	Yes
2	Bath	5'10" x 11'1"	65 sq. ft	Yes
3	Kitchen	10'8" x 10'6"	112 sq. ft	Yes
4	W.I.C.	5'10" x 5'3"	31 sq. ft	Yes
5	Hall	4'7" x 3'0"	14 sq. ft	Yes
6	Bedroom	10'5" x 17'11"	188 sq. ft	Yes
7	Balcony	12'6" x 5'9"	72 sq. ft	No
8	Living Room	12'8" x 14'3"	181 sq. ft	Yes

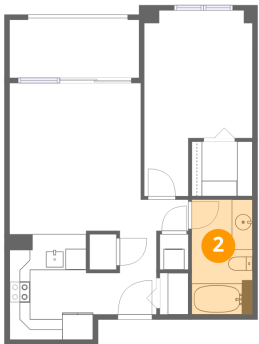
1 Floor 1 - Foyer



Dimensions: 3'6" x 8'1"  
Area: 29 sq. ft  
Counted as living area: Yes

Heated: Yes  
Finished: Yes  
Enclosed: Yes  
Contiguous: Yes  
Permitted: Yes  
Wet space: No  
Addition: No  
Conversion: No

2 Floor 1 - Bath



Dimensions: 5'10" x 11'1"  
Area: 65 sq. ft  
Counted as living area: Yes

Heated: Yes  
Finished: Yes  
Enclosed: Yes  
Contiguous: Yes  
Permitted: Yes  
Wet space: Yes  
Addition: No  
Conversion: No

345 Bayshore Boulevard, Hyde Park North, Tampa, Hillsborough County, Florida, United States, 33606, 603

### 3 Floor 1 - Kitchen



Dimensions: 10'8" x 10'6"  
Area: 112 sq. ft  
Counted as living area: Yes

Heated: Yes  
Finished: Yes  
Enclosed: Yes  
Contiguous: Yes  
Permitted: Yes  
Wet space: No  
Addition: No  
Conversion: No

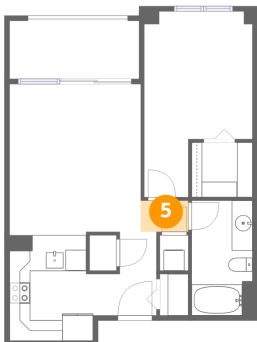
### 4 Floor 1 - W.I.C.



Dimensions: 5'10" x 5'3"  
Area: 31 sq. ft  
Counted as living area: Yes

Heated: Yes  
Finished: Yes  
Enclosed: Yes  
Contiguous: Yes  
Permitted: Yes  
Wet space: No  
Addition: No  
Conversion: No

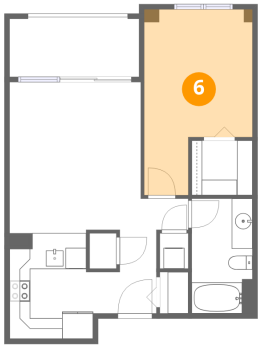
### 5 Floor 1 - Hall



Dimensions: 4'7" x 3'0"  
Area: 14 sq. ft  
Counted as living area: Yes

Heated: Yes  
Finished: Yes  
Enclosed: Yes  
Contiguous: Yes  
Permitted: Yes  
Wet space: No  
Addition: No  
Conversion: No

6 Floor 1 - Bedroom



Dimensions: 10'5" x 17'11"  
Area: 188 sq. ft  
Counted as living area: Yes

Heated: Yes  
Finished: Yes  
Enclosed: Yes  
Contiguous: Yes  
Permitted: Yes  
Wet space: No  
Addition: No  
Conversion: No

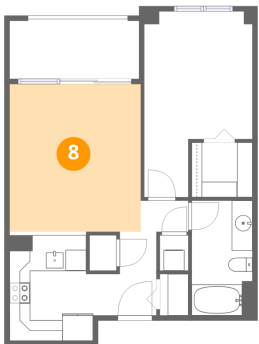
7 Floor 1 - Balcony



Dimensions: 12'6" x 5'9"  
Area: 72 sq. ft  
Counted as living area: No

Heated: No  
Finished: No  
Enclosed: No  
Contiguous: Yes  
Permitted: Yes  
Wet space: No  
Addition: No  
Conversion: No

8 Floor 1 - Living Room



Dimensions: 12'8" x 14'3"  
Area: 181 sq. ft  
Counted as living area: Yes

Heated: Yes  
Finished: Yes  
Enclosed: Yes  
Contiguous: Yes  
Permitted: Yes  
Wet space: No  
Addition: No  
Conversion: No