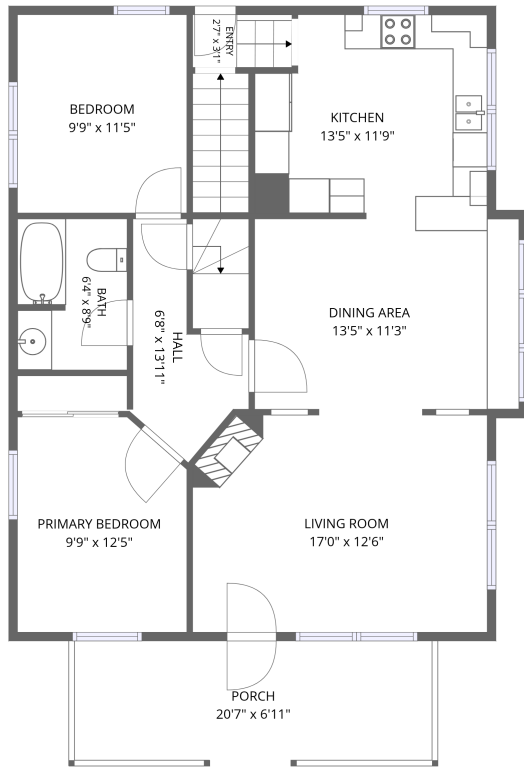
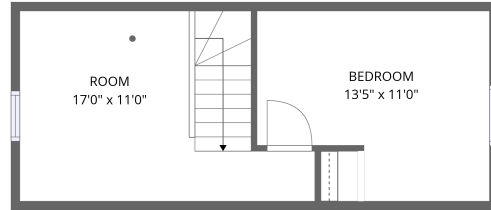


Home data report

543 4th St, Shelbyville, IN, US



1st floor



2nd floor


Total Area: 1283 sq. ft

1st Floor: 985 sq. ft, 2nd Floor: 298 sq. ft

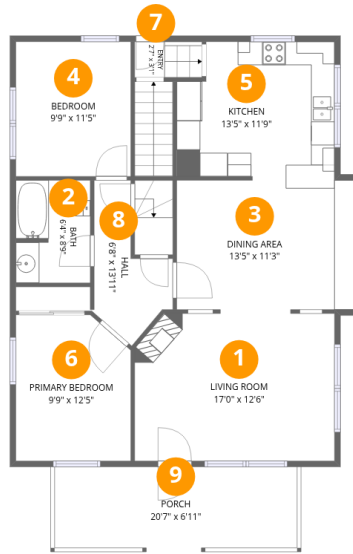
Excluded: Porch 142 sq. ft, Walls: 105 sq. ft

Property summary

 **2** Floors

 **3** Bedrooms

 **1** Bathrooms



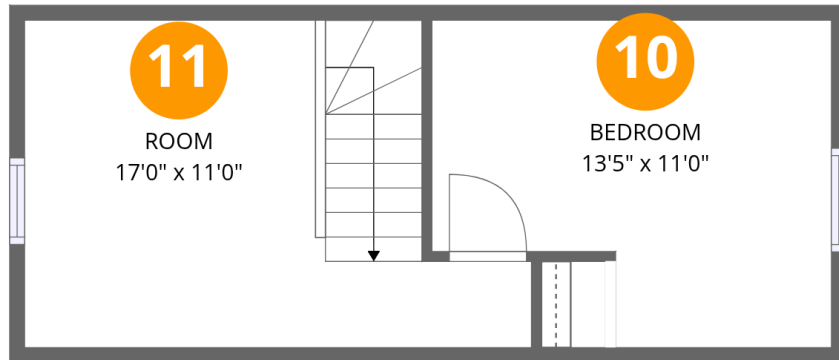
Room dimensions

Floor 1

Total:985sqft

Excluded: 142sqft

#		Dimensions	sqft	Counted as living area
1	Living Room	17'0" x 12'6"	210 sq. ft	Yes
2	Bath	6'4" x 8'9"	54 sq. ft	Yes
3	Dining Area	13'5" x 11'3"	170 sq. ft	Yes
4	Bedroom	9'9" x 11'5"	112 sq. ft	Yes
5	Kitchen	13'5" x 11'9"	147 sq. ft	Yes
6	Primary Bedroom	9'9" x 12'5"	116 sq. ft	Yes
7	Entry	2'7" x 3'1"	17 sq. ft	Yes
8	Hall	6'8" x 13'11"	59 sq. ft	Yes
9	Porch	20'7" x 6'11"	142 sq. ft	No



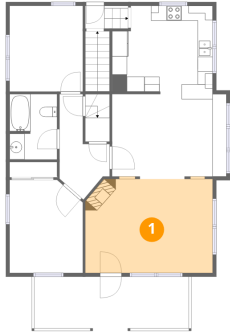
Room dimensions

Floor 2

Total:298sqft Excluded: 0sqft

#		Dimensions	sqft	Counted as living area
10	Bedroom	13'5" x 11'0"	127 sq. ft	Yes
11	Room	17'0" x 11'0"	157 sq. ft	Yes

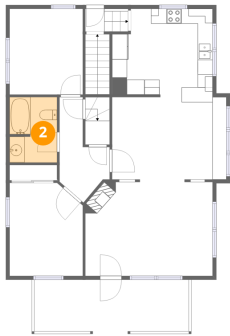
1 Floor 1 - Living Room



Dimensions: 17'0" x 12'6"
Area: 210 sq. ft
Counted as living area: Yes

Heated: Yes
Finished: Yes
Enclosed: Yes
Contiguous: Yes
Permitted: Yes
Wet space: No
Addition: No
Conversion: No

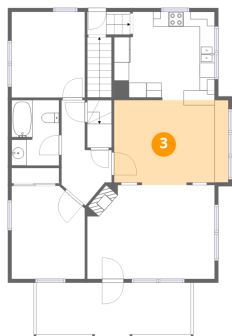
2 Floor 1 - Bath



Dimensions: 6'4" x 8'9"
Area: 54 sq. ft
Counted as living area: Yes

Heated: Yes
Finished: Yes
Enclosed: Yes
Contiguous: Yes
Permitted: Yes
Wet space: Yes
Addition: No
Conversion: No

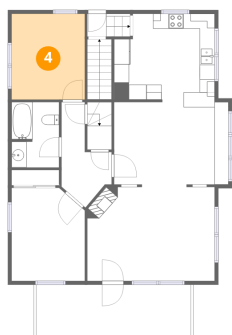
3 Floor 1 - Dining Area



Dimensions: 13'5" x 11'3"
Area: 170 sq. ft
Counted as living area: Yes

Heated: Yes
Finished: Yes
Enclosed: Yes
Contiguous: Yes
Permitted: Yes
Wet space: No
Addition: No
Conversion: No

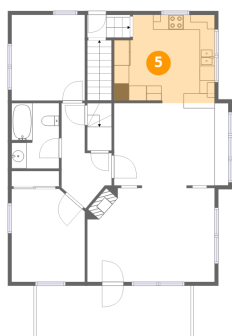
4 Floor 1 - Bedroom



Dimensions: 9'9" x 11'5"
Area: 112 sq. ft
Counted as living area: Yes

Heated: Yes
Finished: Yes
Enclosed: Yes
Contiguous: Yes
Permitted: Yes
Wet space: No
Addition: No
Conversion: No

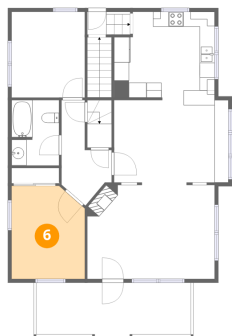
5 Floor 1 - Kitchen



Dimensions: 13'5" x 11'9"
Area: 147 sq. ft
Counted as living area: Yes

Heated: Yes
Finished: Yes
Enclosed: Yes
Contiguous: Yes
Permitted: Yes
Wet space: No
Addition: No
Conversion: No

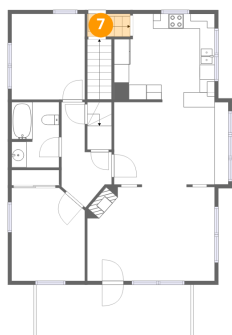
6 Floor 1 - Primary Bedroom



Dimensions: 9'9" x 12'5"
Area: 116 sq. ft
Counted as living area: Yes

Heated: Yes
Finished: Yes
Enclosed: Yes
Contiguous: Yes
Permitted: Yes
Wet space: No
Addition: No
Conversion: No

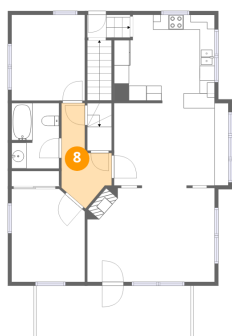
7 Floor 1 - Entry



Dimensions: 2'7" x 3'1"
Area: 17 sq. ft
Counted as living area: Yes

Heated: Yes
Finished: Yes
Enclosed: Yes
Contiguous: Yes
Permitted: Yes
Wet space: No
Addition: No
Conversion: No

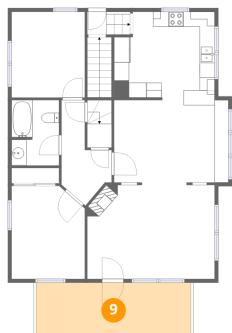
8 Floor 1 - Hall



Dimensions: 6'8" x 13'11"
Area: 59 sq. ft
Counted as living area: Yes

Heated: Yes
Finished: Yes
Enclosed: Yes
Contiguous: Yes
Permitted: Yes
Wet space: No
Addition: No
Conversion: No

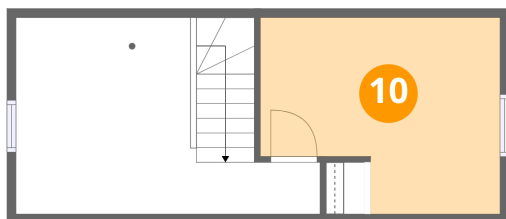
9 Floor 1 - Porch



Dimensions: 20'7" x 6'11"
Area: 142 sq. ft
Counted as living area: No

Heated: No
Finished: No
Enclosed: No
Contiguous: Yes
Permitted: Yes
Wet space: No
Addition: No
Conversion: No

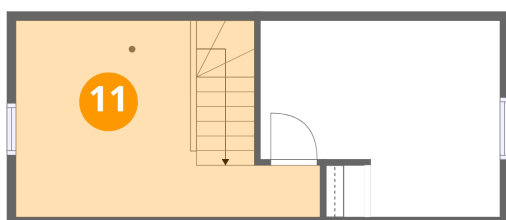
10 Floor 2 - Bedroom



Dimensions: 13'5" x 11'0"
Area: 127 sq. ft
Counted as living area: Yes

Heated: Yes
Finished: Yes
Enclosed: Yes
Contiguous: Yes
Permitted: Yes
Wet space: No
Addition: No
Conversion: No

11 Floor 2 - Room



Dimensions: 17'0" x 11'0"
Area: 157 sq. ft
Counted as living area: Yes

Heated: Yes
Finished: Yes
Enclosed: Yes
Contiguous: Yes
Permitted: Yes
Wet space: No
Addition: No
Conversion: No