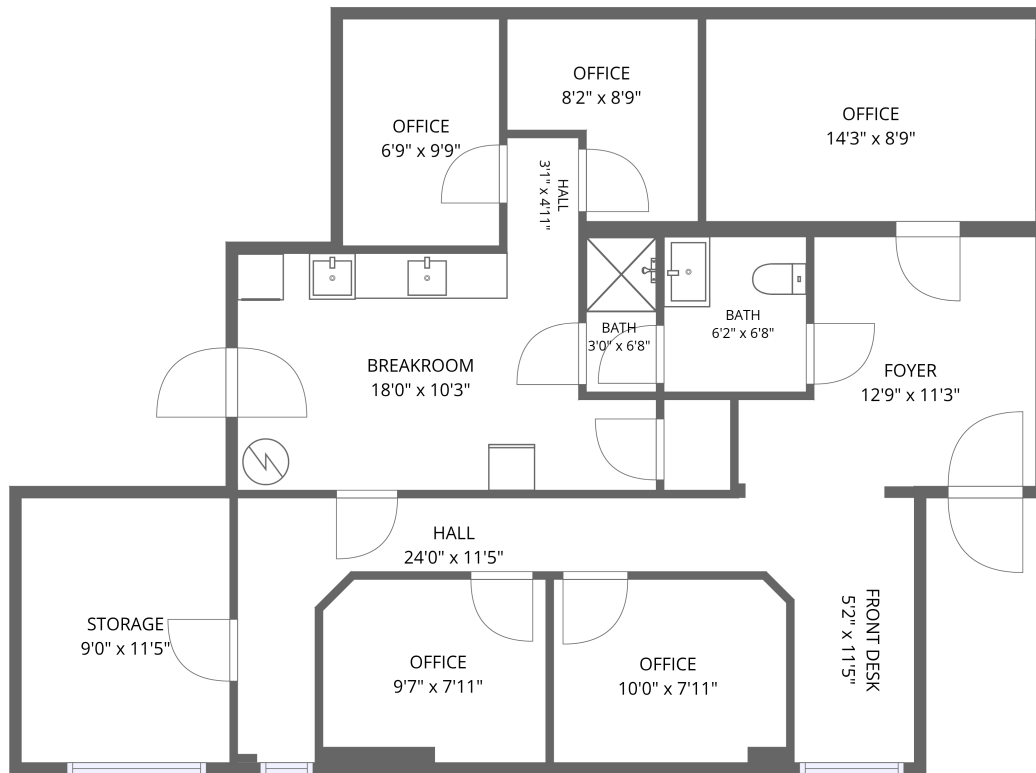


Home data report

**4310 Brandon Avenue Southwest, Greater Deyerle, Roanoke,
Roanoke city, Virginia, United States, 24018**



1st floor

Total Area: 998 sq. ft

1st Floor: 998 sq. ft

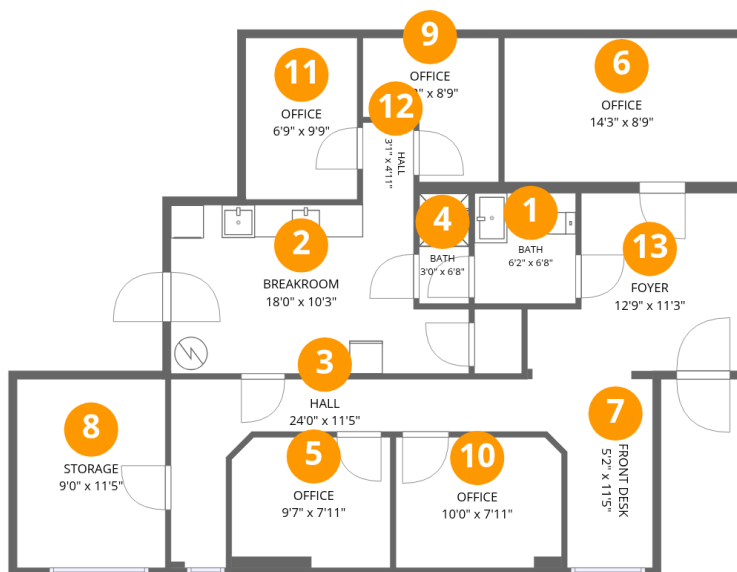
Excluded: Storage 102 sq. ft, Walls: 77 sq. ft

Property summary



Home data report

4310 Brandon Avenue Southwest, Greater Deyerle, Roanoke, Roanoke city, Virginia, United States, 24018



Room dimensions

Floor 1

Total:998sqft Excluded: 102sqft

#		Dimensions	sqft	Counted as living area
1	Bath	6'2" x 6'8"	41 sq. ft	Yes
2	Breakroom	18'0" x 10'3"	163 sq. ft	Yes
3	Hall	24'0" x 11'5"	106 sq. ft	Yes
4	Bath	3'0" x 6'8"	20 sq. ft	Yes
5	Office	9'7" x 7'11"	75 sq. ft	Yes
6	Office	14'3" x 8'9"	124 sq. ft	Yes
7	Front Desk	5'2" x 11'5"	59 sq. ft	Yes
8	Storage	9'0" x 11'5"	102 sq. ft	No
9	Office	8'2" x 8'9"	58 sq. ft	Yes
10	Office	10'0" x 7'11"	79 sq. ft	Yes
11	Office	6'9" x 9'9"	66 sq. ft	Yes

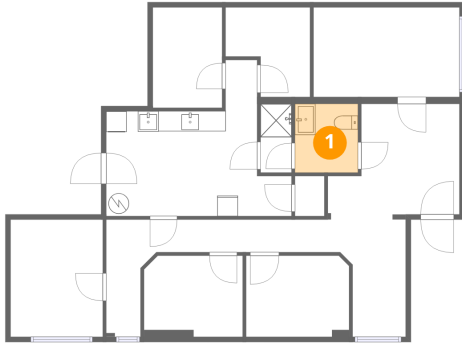
Home data report

**4310 Brandon Avenue Southwest, Greater Deyerle, Roanoke,
Roanoke city, Virginia, United States, 24018**

#		Dimensions	sqft	Counted as living area
12	Hall	3'1" x 4'11"	15 sq. ft	Yes
13	Foyer	12'9" x 11'3"	119 sq. ft	Yes

**4310 Brandon Avenue Southwest, Greater Deyerle, Roanoke,
Roanoke city, Virginia, United States, 24018**

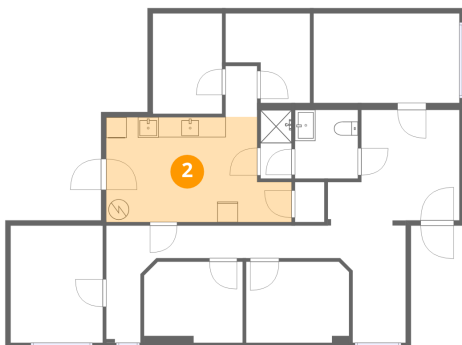
1 Floor 1 - Bath



Dimensions: 6'2" x 6'8"
Area: 41 sq. ft
Counted as living area: Yes

Heated: Yes
Finished: Yes
Enclosed: Yes
Contiguous: Yes
Permitted: Yes
Wet space: Yes
Addition: No
Conversion: No

2 Floor 1 - Breakroom

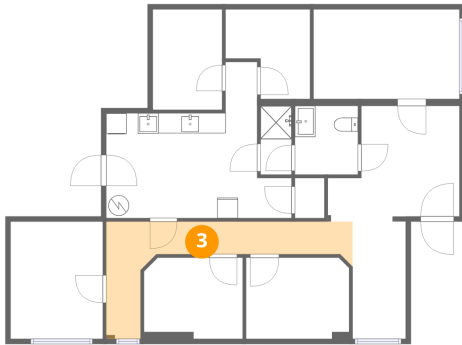


Dimensions: 18'0" x 10'3"
Area: 163 sq. ft
Counted as living area: Yes

Heated: Yes
Finished: Yes
Enclosed: Yes
Contiguous: Yes
Permitted: Yes
Wet space: No
Addition: No
Conversion: No

4310 Brandon Avenue Southwest, Greater Deyerle, Roanoke,
Roanoke city, Virginia, United States, 24018

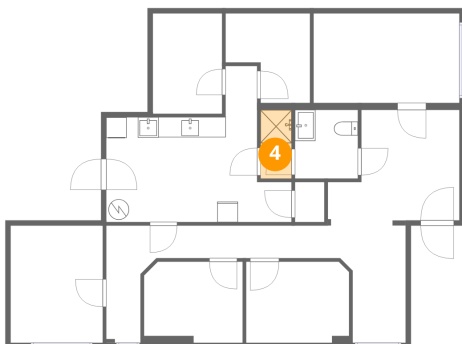
3 Floor 1 - Hall



Dimensions: 24'0" x 11'5"
Area: 106 sq. ft
Counted as living area: Yes

Heated: Yes
Finished: Yes
Enclosed: Yes
Contiguous: Yes
Permitted: Yes
Wet space: No
Addition: No
Conversion: No

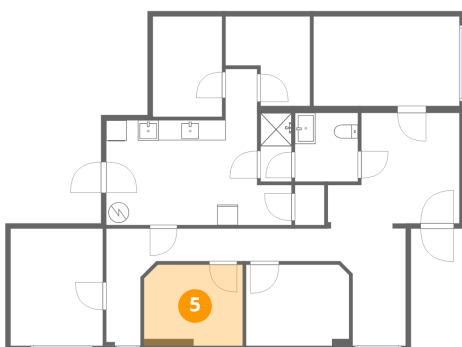
4 Floor 1 - Bath



Dimensions: 3'0" x 6'8"
Area: 20 sq. ft
Counted as living area: Yes

Heated: Yes
Finished: Yes
Enclosed: Yes
Contiguous: Yes
Permitted: Yes
Wet space: Yes
Addition: No
Conversion: No

5 Floor 1 - Office

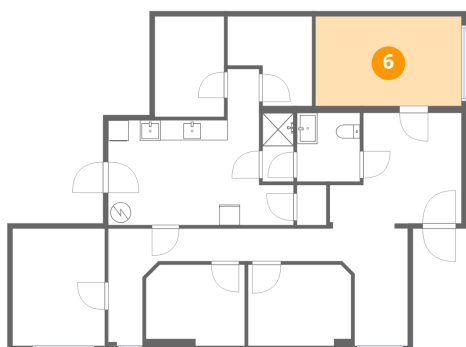


Dimensions: 9'7" x 7'11"
Area: 75 sq. ft
Counted as living area: Yes

Heated: Yes
Finished: Yes
Enclosed: Yes
Contiguous: Yes
Permitted: Yes
Wet space: No
Addition: No
Conversion: No

4310 Brandon Avenue Southwest, Greater Deyerle, Roanoke, Roanoke city, Virginia, United States, 24018

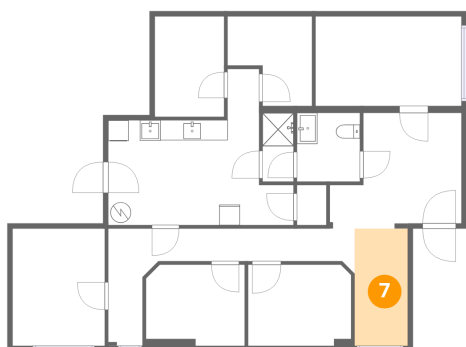
6 Floor 1 - Office



Dimensions: 14'3" x 8'9"
Area: 124 sq. ft
Counted as living area: Yes

Heated: Yes
Finished: Yes
Enclosed: Yes
Contiguous: Yes
Permitted: Yes
Wet space: No
Addition: No
Conversion: No

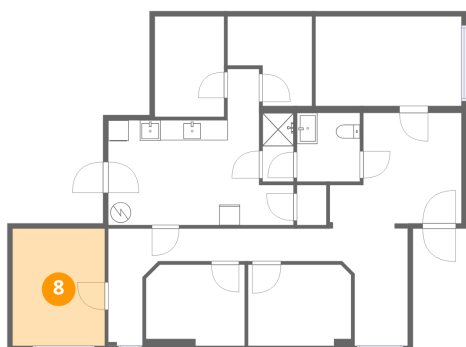
7 Floor 1 - Front Desk



Dimensions: 5'2" x 11'5"
Area: 59 sq. ft
Counted as living area: Yes

Heated: Yes
Finished: Yes
Enclosed: Yes
Contiguous: Yes
Permitted: Yes
Wet space: No
Addition: No
Conversion: No

8 Floor 1 - Storage

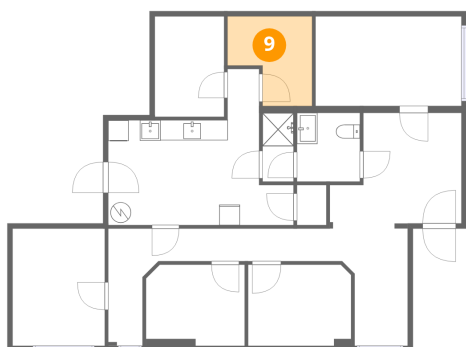


Dimensions: 9'0" x 11'5"
Area: 102 sq. ft
Counted as living area: No

Heated: No
Finished: No
Enclosed: No
Contiguous: No
Permitted: Yes
Wet space: No
Addition: No
Conversion: No

4310 Brandon Avenue Southwest, Greater Deyerle, Roanoke, Roanoke city, Virginia, United States, 24018

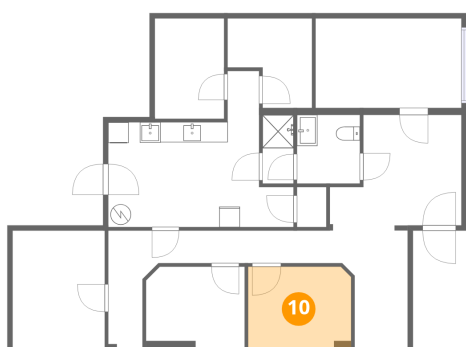
9 Floor 1 - Office



Dimensions: 8'2" x 8'9"
Area: 58 sq. ft
Counted as living area: Yes

Heated: Yes
Finished: Yes
Enclosed: Yes
Contiguous: Yes
Permitted: Yes
Wet space: No
Addition: No
Conversion: No

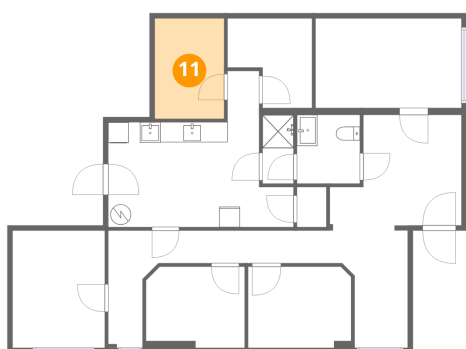
10 Floor 1 - Office



Dimensions: 10'0" x 7'11"
Area: 79 sq. ft
Counted as living area: Yes

Heated: Yes
Finished: Yes
Enclosed: Yes
Contiguous: Yes
Permitted: Yes
Wet space: No
Addition: No
Conversion: No

11 Floor 1 - Office

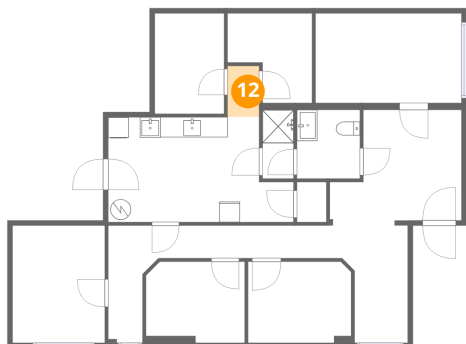


Dimensions: 6'9" x 9'9"
Area: 66 sq. ft
Counted as living area: Yes

Heated: Yes
Finished: Yes
Enclosed: Yes
Contiguous: Yes
Permitted: Yes
Wet space: No
Addition: No
Conversion: No

**4310 Brandon Avenue Southwest, Greater Deyerle, Roanoke,
Roanoke city, Virginia, United States, 24018**

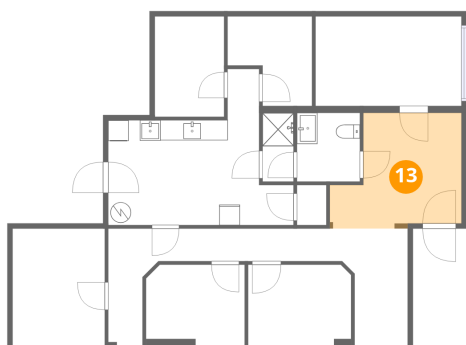
12 Floor 1 - Hall



Dimensions: 3'1" x 4'11"
Area: 15 sq. ft
Counted as living area: Yes

Heated: Yes
Finished: Yes
Enclosed: Yes
Contiguous: Yes
Permitted: Yes
Wet space: No
Addition: No
Conversion: No

13 Floor 1 - Foyer



Dimensions: 12'9" x 11'3"
Area: 119 sq. ft
Counted as living area: Yes

Heated: Yes
Finished: Yes
Enclosed: Yes
Contiguous: Yes
Permitted: Yes
Wet space: No
Addition: No
Conversion: No