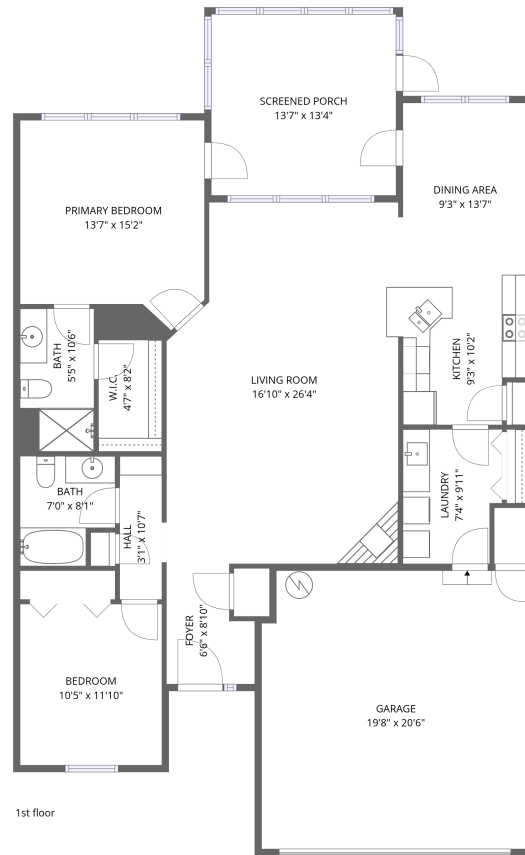


604 Cygnet Lake Dr, Benton Harbor, MI, US



Total Area: 1355 sq. ft

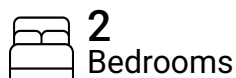
1st Floor: 1355 sq. ft

Excluded: Garage 411 sq. ft, Screened porch 182 sq. ft, Walls: 133 sq. ft

Property summary



1 Floors



2 Bedrooms

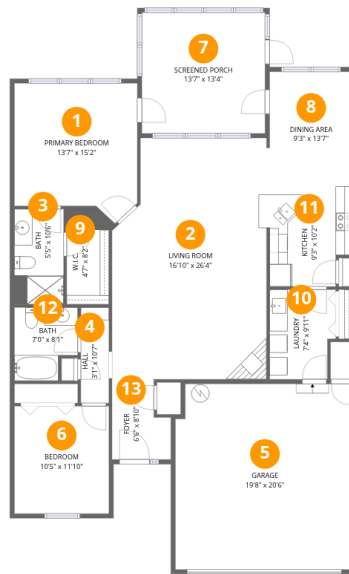


2 Bathrooms



1 Garages

604 Cygnet Lake Dr, Benton Harbor, MI, US



Room dimensions

Floor 1

Total: 1355sqft Excluded: 593sqft

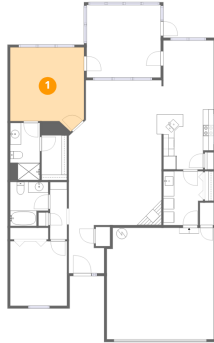
#		Dimensions	sqft	Counted as living area
1	Primary Bedroom	13'7" x 15'2"	188 sq. ft	Yes
2	Living Room	16'10" x 26'4"	430 sq. ft	Yes
3	Bath	5'5" x 10'6"	57 sq. ft	Yes
4	Hall	3'1" x 10'7"	33 sq. ft	Yes
5	Garage	19'8" x 20'6"	399 sq. ft	No
6	Bedroom	10'5" x 11'10"	124 sq. ft	Yes
7	Screened Porch	13'7" x 13'4"	182 sq. ft	No
8	Dining Area	9'3" x 13'7"	126 sq. ft	Yes
9	W.I.C.	4'7" x 8'2"	48 sq. ft	Yes
10	Laundry	7'4" x 9'11"	68 sq. ft	Yes
11	Kitchen	9'3" x 10'2"	87 sq. ft	Yes

Home data report

604 Cygnet Lake Dr, Benton Harbor, MI, US

#		Dimensions	sqft	Counted as living area
12	Bath	7'0" x 8'1"	51 sq. ft	Yes
13	Foyer	6'6" x 8'10"	50 sq. ft	Yes

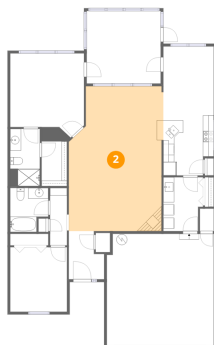
1 Floor 1 - Primary Bedroom



Dimensions: 13'7" x 15'2"
Area: 188 sq. ft
Counted as living area: Yes

Heated: Yes
Finished: Yes
Enclosed: Yes
Contiguous: Yes
Permitted: Yes
Wet space: No
Addition: No
Conversion: No

2 Floor 1 - Living Room



Dimensions: 16'10" x 26'4"
Area: 430 sq. ft
Counted as living area: Yes

Heated: Yes
Finished: Yes
Enclosed: Yes
Contiguous: Yes
Permitted: Yes
Wet space: No
Addition: No
Conversion: No

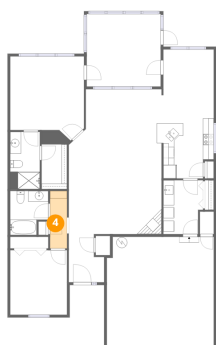
3 Floor 1 - Bath



Dimensions: 5'5" x 10'6"
Area: 57 sq. ft
Counted as living area: Yes

Heated: Yes
Finished: Yes
Enclosed: Yes
Contiguous: Yes
Permitted: Yes
Wet space: Yes
Addition: No
Conversion: No

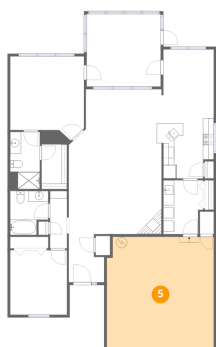
4 Floor 1 - Hall



Dimensions: 3'1" x 10'7"
Area: 33 sq. ft
Counted as living area: Yes

Heated: Yes
Finished: Yes
Enclosed: Yes
Contiguous: Yes
Permitted: Yes
Wet space: No
Addition: No
Conversion: No

5 Floor 1 - Garage



Dimensions: 19'8" x 20'6"
Area: 399 sq. ft
Counted as living area: No

Heated: No
Finished: No
Enclosed: Yes
Contiguous: Yes
Permitted: Yes
Wet space: No
Addition: No
Conversion: No

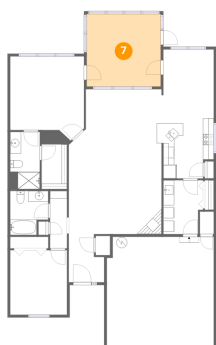
6 Floor 1 - Bedroom



Dimensions: 10'5" x 11'10"
Area: 124 sq. ft
Counted as living area: Yes

Heated: Yes
Finished: Yes
Enclosed: Yes
Contiguous: Yes
Permitted: Yes
Wet space: No
Addition: No
Conversion: No

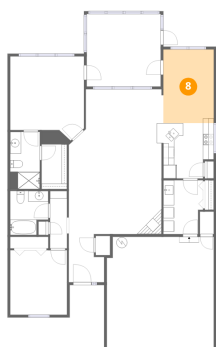
7 Floor 1 - Screened Porch



Dimensions: 13'7" x 13'4"
Area: 182 sq. ft
Counted as living area: No

Heated: No
Finished: No
Enclosed: No
Contiguous: Yes
Permitted: Yes
Wet space: No
Addition: No
Conversion: No

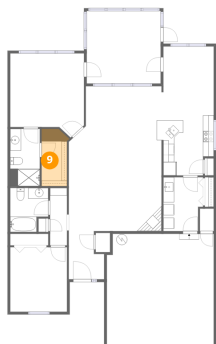
8 Floor 1 - Dining Area



Dimensions: 9'3" x 13'7"
Area: 126 sq. ft
Counted as living area: Yes

Heated: Yes
Finished: Yes
Enclosed: Yes
Contiguous: Yes
Permitted: Yes
Wet space: No
Addition: No
Conversion: No

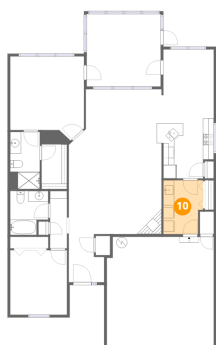
9 Floor 1 - W.I.C.



Dimensions: 4'7" x 8'2"
Area: 48 sq. ft
Counted as living area: Yes

Heated: Yes
Finished: Yes
Enclosed: Yes
Contiguous: Yes
Permitted: Yes
Wet space: No
Addition: No
Conversion: No

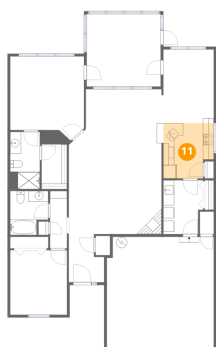
10 Floor 1 - Laundry



Dimensions: 7'4" x 9'11"
Area: 68 sq. ft
Counted as living area: Yes

Heated: Yes
Finished: Yes
Enclosed: Yes
Contiguous: Yes
Permitted: Yes
Wet space: No
Addition: No
Conversion: No

11 Floor 1 - Kitchen



Dimensions: 9'3" x 10'2"
Area: 87 sq. ft
Counted as living area: Yes

Heated: Yes
Finished: Yes
Enclosed: Yes
Contiguous: Yes
Permitted: Yes
Wet space: No
Addition: No
Conversion: No

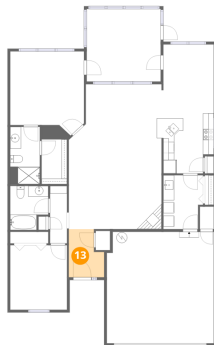
12 Floor 1 - Bath



Dimensions: 7'0" x 8'1"
Area: 51 sq. ft
Counted as living area: Yes

Heated: Yes
Finished: Yes
Enclosed: Yes
Contiguous: Yes
Permitted: Yes
Wet space: Yes
Addition: No
Conversion: No

13 Floor 1 - Foyer



Dimensions: 6'6" x 8'10"
Area: 50 sq. ft
Counted as living area: Yes

Heated: Yes
Finished: Yes
Enclosed: Yes
Contiguous: Yes
Permitted: Yes
Wet space: No
Addition: No
Conversion: No