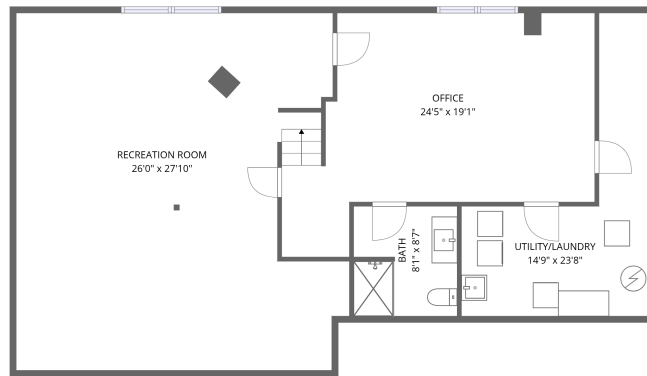
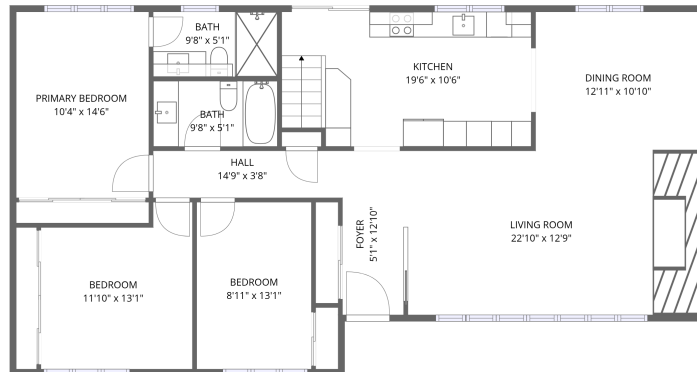


Home data report

28 Leacock Drive, Beaverbrook, Kanata, Ontario, Canada, K2K 1S1

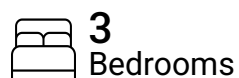


Total Area: 2460 sq. ft

Basement: 1089 sq. ft, 1st Floor: 1371 sq. ft

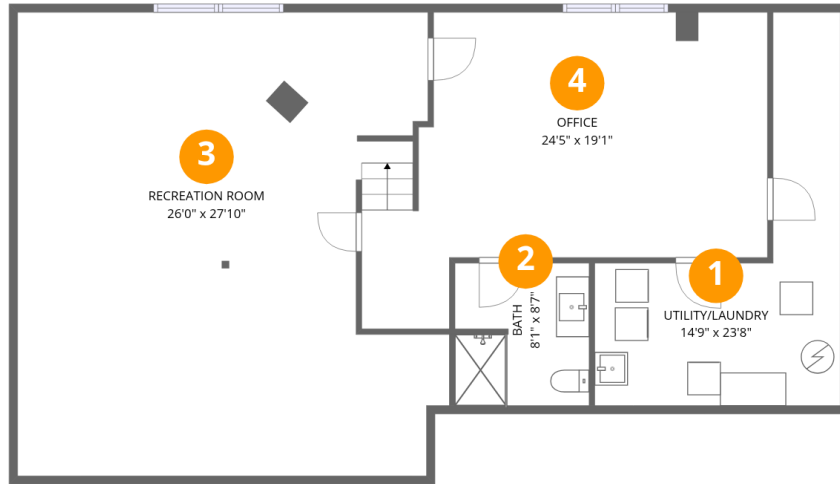
Excluded: Utility/laundry 188 sq. ft, Walls: 162 sq. ft

Property summary



Home data report

28 Leacock Drive, Beaverbrook, Kanata, Ontario, Canada, K2K 1S1



Room dimensions

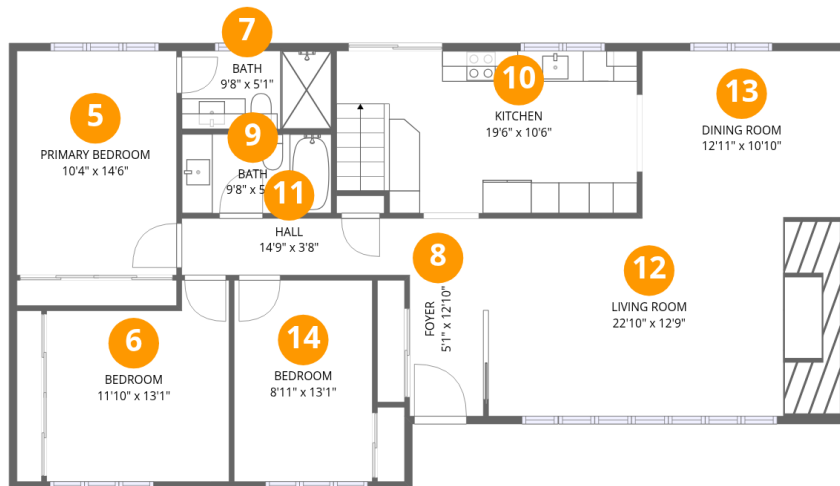
Floor 1 Below grade

Total:1089sqft

Excluded: 188sqft

#		Dimensions	sqft	Counted as living area
1	Utility/Laundry	14'9" x 23'8"	188 sq. ft	No
2	Bath	8'1" x 8'7"	68 sq. ft	Yes
3	Recreation Room	26'0" x 27'10"	643 sq. ft	Yes
4	Office	24'5" x 19'1"	349 sq. ft	Yes

28 Leacock Drive, Beaverbrook, Kanata, Ontario, Canada, K2K 1S1



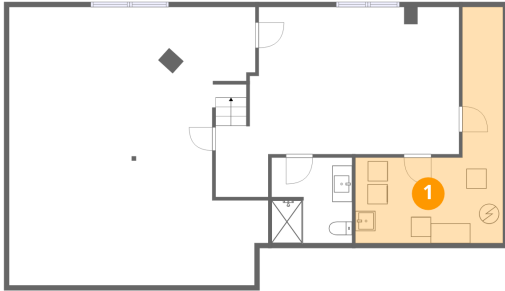
Room dimensions

Floor 2

Total:1371sqft Excluded: 0sqft

#		Dimensions	sqft	Counted as living area
5	Primary Bedroom	10'4" x 14'6"	150 sq. ft	Yes
6	Bedroom	11'10" x 13'1"	137 sq. ft	Yes
7	Bath	9'8" x 5'1"	49 sq. ft	Yes
8	Foyer	5'1" x 12'10"	65 sq. ft	Yes
9	Bath	9'8" x 5'1"	50 sq. ft	Yes
10	Kitchen	19'6" x 10'6"	200 sq. ft	Yes
11	Hall	14'9" x 3'8"	54 sq. ft	Yes
12	Living Room	22'10" x 12'9"	293 sq. ft	Yes
13	Dining Room	12'11" x 10'10"	140 sq. ft	Yes
14	Bedroom	8'11" x 13'1"	117 sq. ft	Yes

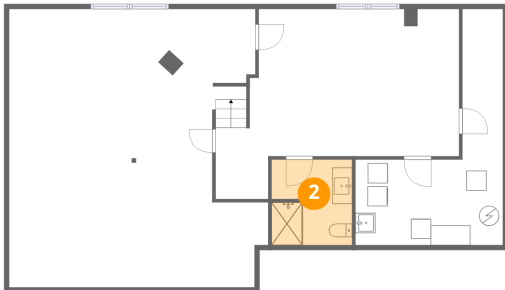
1 Floor 1 - Utility/Laundry



Dimensions: 14'9" x 23'8"
Area: 188 sq. ft
Counted as living area: No

Heated: Yes
Finished: No
Enclosed: Yes
Contiguous: Yes
Permitted: Yes
Wet space: No
Addition: No
Conversion: No

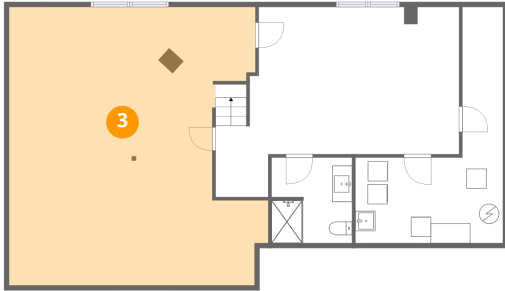
2 Floor 1 - Bath



Dimensions: 8'1" x 8'7"
Area: 68 sq. ft
Counted as living area: Yes

Heated: Yes
Finished: Yes
Enclosed: Yes
Contiguous: Yes
Permitted: Yes
Wet space: Yes
Addition: No
Conversion: No

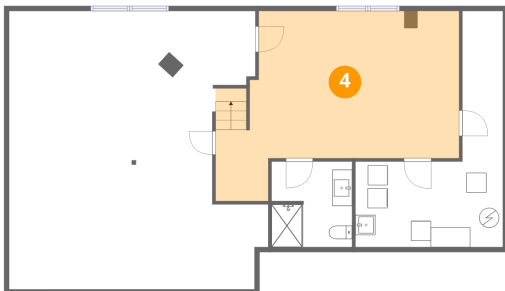
3 Floor 1 - Recreation Room



Dimensions: 26'0" x 27'10"
Area: 643 sq. ft
Counted as living area: Yes

Heated: Yes
Finished: Yes
Enclosed: Yes
Contiguous: Yes
Permitted: Yes
Wet space: No
Addition: No
Conversion: No

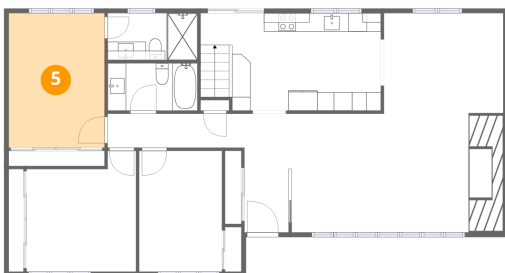
4 Floor 1 - Office



Dimensions: 24'5" x 19'1"
Area: 349 sq. ft
Counted as living area: Yes

Heated: Yes
Finished: Yes
Enclosed: Yes
Contiguous: Yes
Permitted: Yes
Wet space: No
Addition: No
Conversion: No

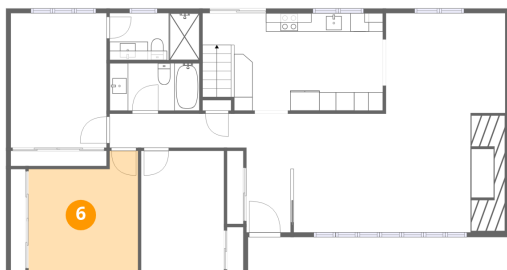
5 Floor 2 - Primary Bedroom



Dimensions: 10'4" x 14'6"
Area: 150 sq. ft
Counted as living area: Yes

Heated: Yes
Finished: Yes
Enclosed: Yes
Contiguous: Yes
Permitted: Yes
Wet space: No
Addition: No
Conversion: No

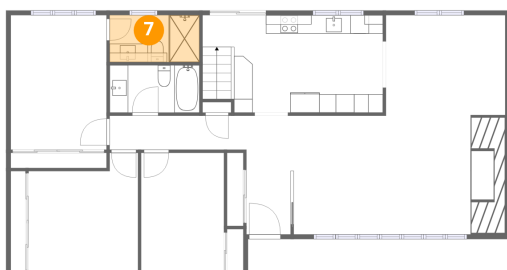
6 Floor 2 - Bedroom



Dimensions: 11'10" x 13'1"
Area: 137 sq. ft
Counted as living area: Yes

Heated: Yes
Finished: Yes
Enclosed: Yes
Contiguous: Yes
Permitted: Yes
Wet space: No
Addition: No
Conversion: No

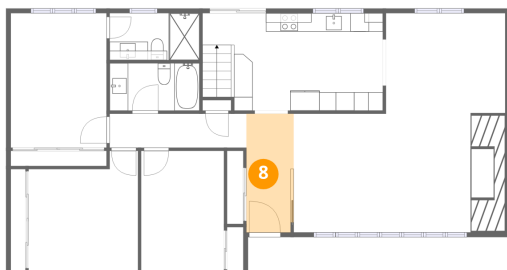
7 Floor 2 - Bath



Dimensions: 9'8" x 5'1"
Area: 49 sq. ft
Counted as living area: Yes

Heated: Yes
Finished: Yes
Enclosed: Yes
Contiguous: Yes
Permitted: Yes
Wet space: Yes
Addition: No
Conversion: No

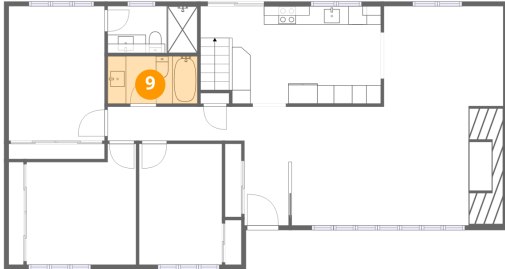
8 Floor 2 - Foyer



Dimensions: 5'1" x 12'10"
Area: 65 sq. ft
Counted as living area: Yes

Heated: Yes
Finished: Yes
Enclosed: Yes
Contiguous: Yes
Permitted: Yes
Wet space: No
Addition: No
Conversion: No

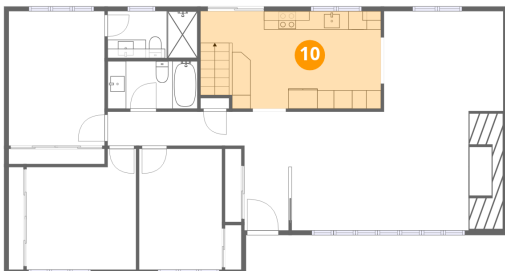
9 Floor 2 - Bath



Dimensions: 9'8" x 5'1"
Area: 50 sq. ft
Counted as living area: Yes

Heated: Yes
Finished: Yes
Enclosed: Yes
Contiguous: Yes
Permitted: Yes
Wet space: Yes
Addition: No
Conversion: No

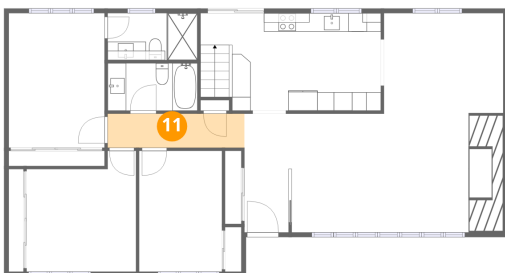
10 Floor 2 - Kitchen



Dimensions: 19'6" x 10'6"
Area: 200 sq. ft
Counted as living area: Yes

Heated: Yes
Finished: Yes
Enclosed: Yes
Contiguous: Yes
Permitted: Yes
Wet space: No
Addition: No
Conversion: No

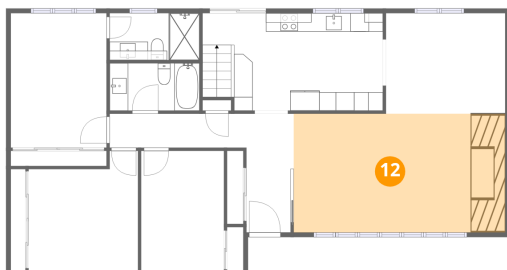
11 Floor 2 - Hall



Dimensions: 14'9" x 3'8"
Area: 54 sq. ft
Counted as living area: Yes

Heated: Yes
Finished: Yes
Enclosed: Yes
Contiguous: Yes
Permitted: Yes
Wet space: No
Addition: No
Conversion: No

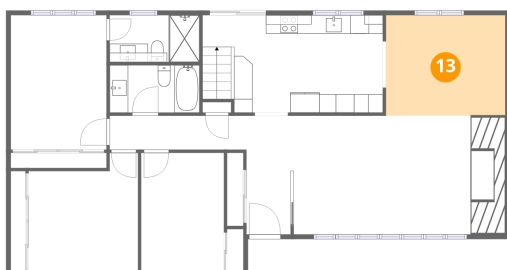
12 Floor 2 - Living Room



Dimensions: 22'10" x 12'9"
Area: 293 sq. ft
Counted as living area: Yes

Heated: Yes
Finished: Yes
Enclosed: Yes
Contiguous: Yes
Permitted: Yes
Wet space: No
Addition: No
Conversion: No

13 Floor 2 - Dining Room



Dimensions: 12'11" x 10'10"
Area: 140 sq. ft
Counted as living area: Yes

Heated: Yes
Finished: Yes
Enclosed: Yes
Contiguous: Yes
Permitted: Yes
Wet space: No
Addition: No
Conversion: No

14 Floor 2 - Bedroom



Dimensions: 8'11" x 13'1"
Area: 117 sq. ft
Counted as living area: Yes

Heated: Yes
Finished: Yes
Enclosed: Yes
Contiguous: Yes
Permitted: Yes
Wet space: No
Addition: No
Conversion: No