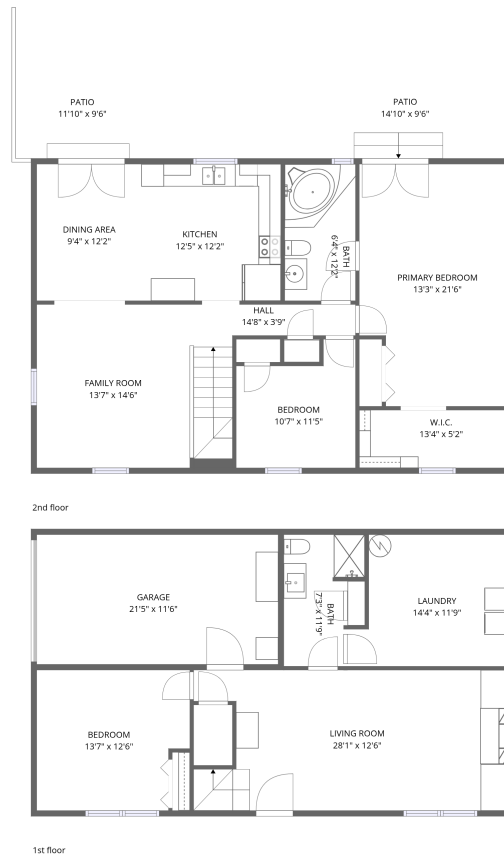


Home data report

1764 Hidden Forest Drive, Goodview, Virginia 24095, United States



Total Area: 1898 sq. ft

1st Floor: 765 sq. ft, 2nd Floor: 1133 sq. ft

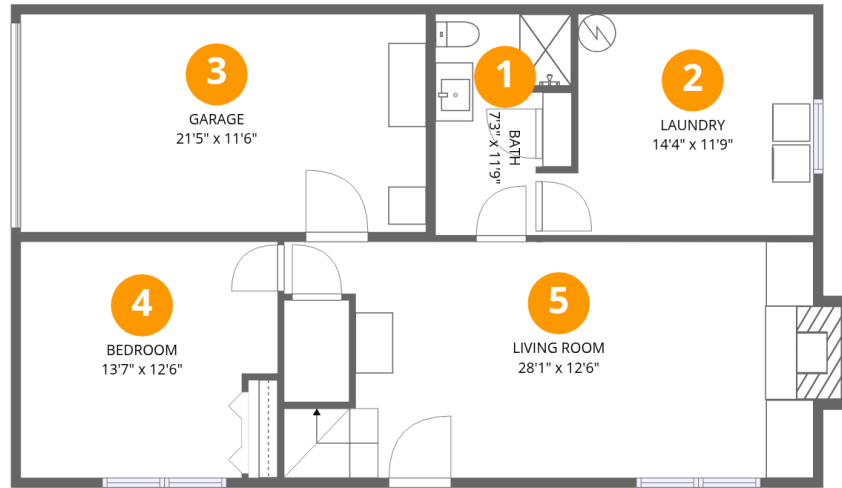
Excluded: Garage 247 sq. ft, Fireplace 9 sq. ft, Patio 255 sq. ft, Walls: 152 sq. ft

Property summary



Home data report

1764 Hidden Forest Drive, Goodview, Virginia 24095, United States



Room dimensions

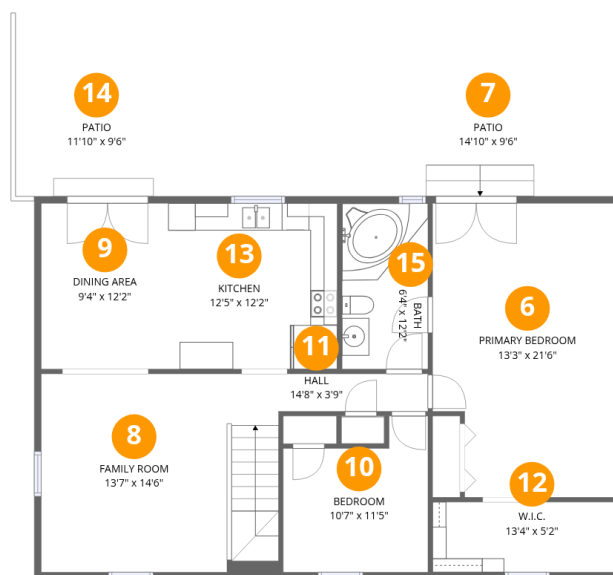
Floor 1

Total:765sqft Excluded: 256sqft

#		Dimensions	sqft	Counted as living area
1	Bath	7'3" x 11'9"	84 sq. ft	Yes
2	Laundry	14'4" x 11'9"	168 sq. ft	Yes
3	Garage	21'5" x 11'6"	247 sq. ft	No
4	Bedroom	13'7" x 12'6"	170 sq. ft	Yes
5	Living Room	28'1" x 12'6"	350 sq. ft	Yes

Home data report

1764 Hidden Forest Drive, Goodview, Virginia 24095, United States



Room dimensions

Floor 2

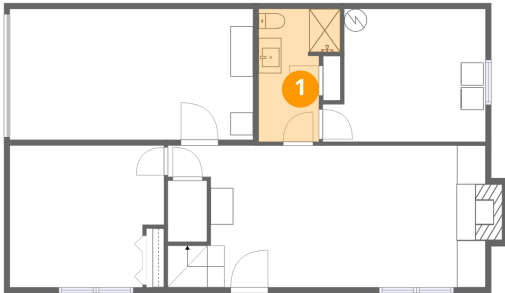
Total: 1133sqft

Excluded: 255sqft

#		Dimensions	sqft	Counted as living area
6	Primary Bedroom	13'3" x 21'6"	286 sq. ft	Yes
7	Patio	14'10" x 9'6"	141 sq. ft	No
8	Family Room	13'7" x 14'6"	198 sq. ft	Yes
9	Dining Area	9'4" x 12'2"	113 sq. ft	Yes
10	Bedroom	10'7" x 11'5"	121 sq. ft	Yes
11	Hall	14'8" x 3'9"	55 sq. ft	Yes
12	W.I.C.	13'4" x 5'2"	68 sq. ft	Yes
13	Kitchen	12'5" x 12'2"	150 sq. ft	Yes
14	Patio	11'10" x 9'6"	112 sq. ft	No
15	Bath	6'4" x 12'2"	76 sq. ft	Yes

1764 Hidden Forest Drive, Goodview, Virginia 24095, United States

1 Floor 1 - Bath



Dimensions: 7'3" x 11'9"
Area: 84 sq. ft
Counted as living area: Yes

Heated: Yes
Finished: Yes
Enclosed: Yes
Contiguous: Yes
Permitted: Yes
Wet space: Yes
Addition: No
Conversion: No

2 Floor 1 - Laundry



Dimensions: 14'4" x 11'9"
Area: 168 sq. ft
Counted as living area: Yes

Heated: Yes
Finished: Yes
Enclosed: Yes
Contiguous: Yes
Permitted: Yes
Wet space: No
Addition: No
Conversion: No

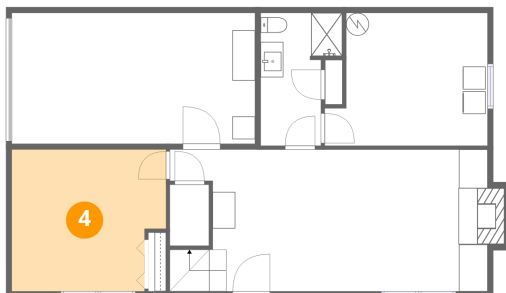
3 Floor 1 - Garage



Dimensions: 21'5" x 11'6"
Area: 247 sq. ft
Counted as living area: No

Heated: No
Finished: No
Enclosed: Yes
Contiguous: Yes
Permitted: Yes
Wet space: No
Addition: No
Conversion: No

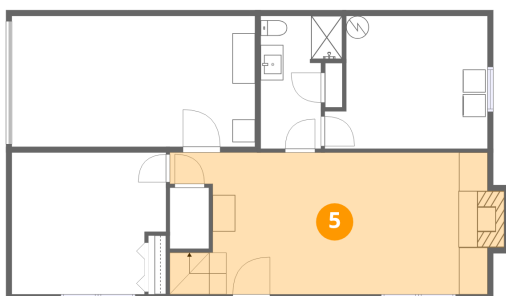
4 Floor 1 - Bedroom



Dimensions: 13'7" x 12'6"
Area: 170 sq. ft
Counted as living area: Yes

Heated: Yes
Finished: Yes
Enclosed: Yes
Contiguous: Yes
Permitted: Yes
Wet space: No
Addition: No
Conversion: No

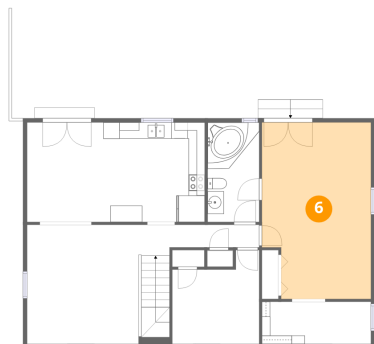
5 Floor 1 - Living Room



Dimensions: 28'1" x 12'6"
Area: 350 sq. ft
Counted as living area: Yes

Heated: Yes
Finished: Yes
Enclosed: Yes
Contiguous: Yes
Permitted: Yes
Wet space: No
Addition: No
Conversion: No

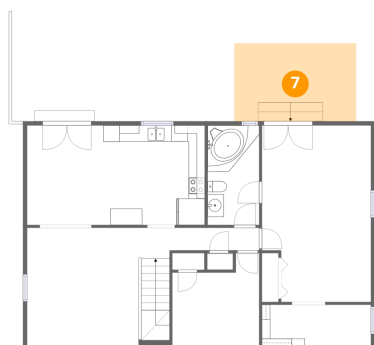
6 Floor 2 - Primary Bedroom



Dimensions: 13'3" x 21'6"
Area: 286 sq. ft
Counted as living area: Yes

Heated: Yes
Finished: Yes
Enclosed: Yes
Contiguous: Yes
Permitted: Yes
Wet space: No
Addition: No
Conversion: No

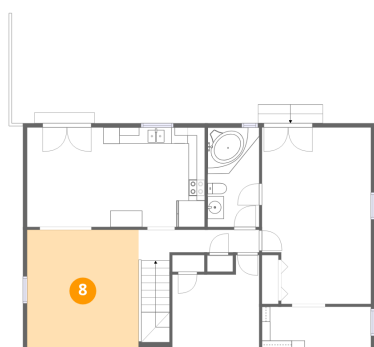
7 Floor 2 - Patio



Dimensions: 14'10" x 9'6"
Area: 141 sq. ft
Counted as living area: No

Heated: No
Finished: No
Enclosed: No
Contiguous: Yes
Permitted: Yes
Wet space: No
Addition: No
Conversion: No

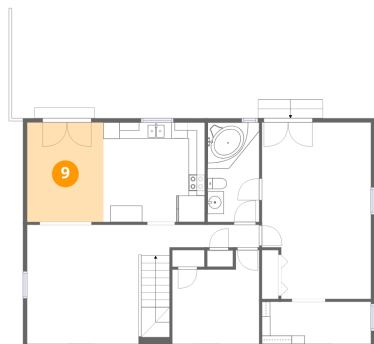
8 Floor 2 - Family Room



Dimensions: 13'7" x 14'6"
Area: 198 sq. ft
Counted as living area: Yes

Heated: Yes
Finished: Yes
Enclosed: Yes
Contiguous: Yes
Permitted: Yes
Wet space: No
Addition: No
Conversion: No

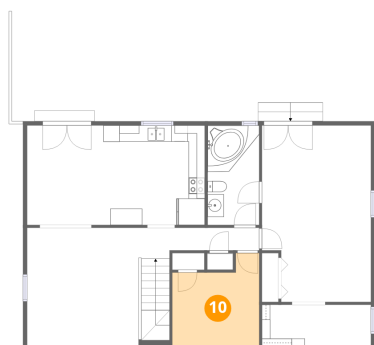
9 Floor 2 - Dining Area



Dimensions: 9'4" x 12'2"
Area: 113 sq. ft
Counted as living area: Yes

Heated: Yes
Finished: Yes
Enclosed: Yes
Contiguous: Yes
Permitted: Yes
Wet space: No
Addition: No
Conversion: No

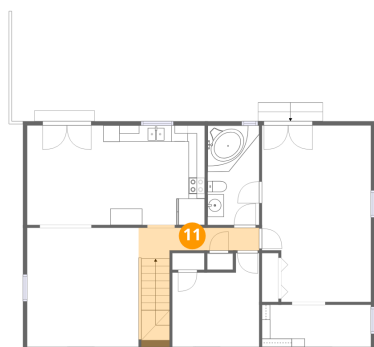
10 Floor 2 - Bedroom



Dimensions: 10'7" x 11'5"
Area: 121 sq. ft
Counted as living area: Yes

Heated: Yes
Finished: Yes
Enclosed: Yes
Contiguous: Yes
Permitted: Yes
Wet space: No
Addition: No
Conversion: No

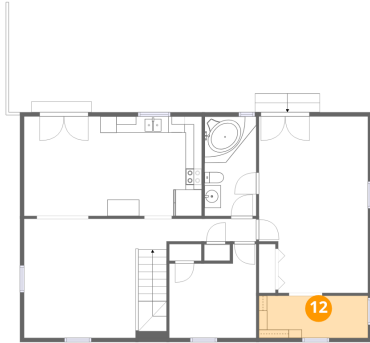
11 Floor 2 - Hall



Dimensions: 14'8" x 3'9"
Area: 55 sq. ft
Counted as living area: Yes

Heated: Yes
Finished: Yes
Enclosed: Yes
Contiguous: Yes
Permitted: Yes
Wet space: No
Addition: No
Conversion: No

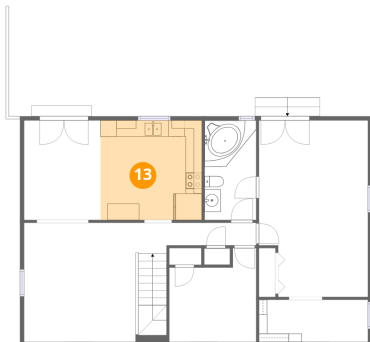
12 Floor 2 - W.I.C.



Dimensions: 13'4" x 5'2"
Area: 68 sq. ft
Counted as living area: Yes

Heated: Yes
Finished: Yes
Enclosed: Yes
Contiguous: Yes
Permitted: Yes
Wet space: No
Addition: No
Conversion: No

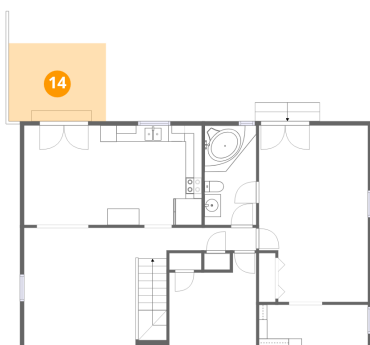
13 Floor 2 - Kitchen



Dimensions: 12'5" x 12'2"
Area: 150 sq. ft
Counted as living area: Yes

Heated: Yes
Finished: Yes
Enclosed: Yes
Contiguous: Yes
Permitted: Yes
Wet space: No
Addition: No
Conversion: No

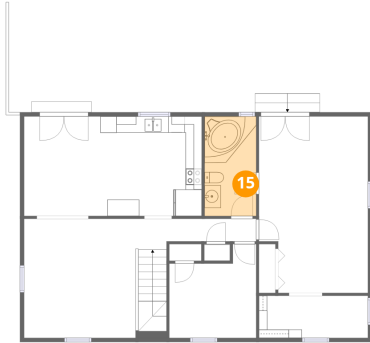
14 Floor 2 - Patio



Dimensions: 11'10" x 9'6"
Area: 112 sq. ft
Counted as living area: No

Heated: No
Finished: No
Enclosed: No
Contiguous: Yes
Permitted: Yes
Wet space: No
Addition: No
Conversion: No

15 Floor 2 - Bath



Dimensions: 6'4" x 12'2"
Area: 76 sq. ft
Counted as living area: Yes

Heated: Yes
Finished: Yes
Enclosed: Yes
Contiguous: Yes
Permitted: Yes
Wet space: Yes
Addition: No
Conversion: No