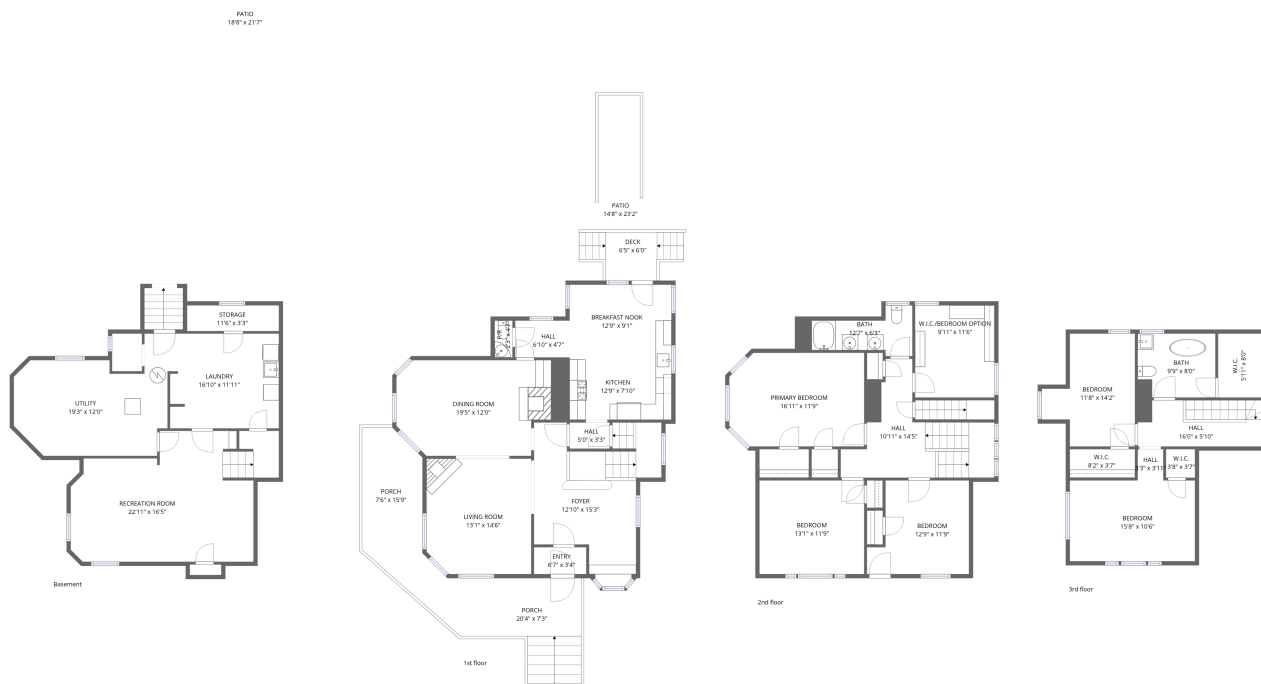


# Home data report

## 39 Draper Terrace, Montclair, Essex County, New Jersey, United States, 07042



**Total Area: 3077 sq. ft**

Basement: 594 sq. ft, 1st Floor: 959 sq. ft, 2nd Floor: 939 sq. ft, 3rd Floor: 585 sq. ft

Excluded: Utility 206 sq. ft, Storage 37 sq. ft, Patio 513 sq. ft, Porch 313 sq. ft, Deck 61 sq. ft, Embedded window 7 sq. ft, Walls: 264 sq. ft

### Property summary

 **4** Floors

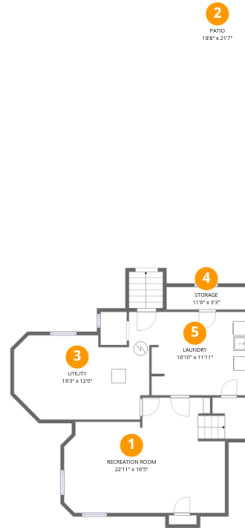
 **5** Bedrooms

 **2** Bathrooms

 **1** Half baths

## Home data report

39 Draper Terrace, Montclair, Essex County, New Jersey, United States, 07042



## Room dimensions

Floor 1 Below grade

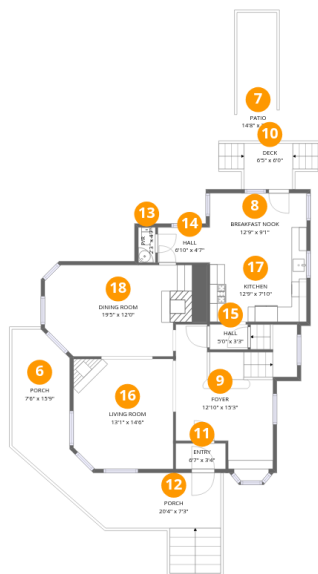
Total:594sqft

Excluded: 616sqft

#		Dimensions	sqft	Counted as living area
1	Recreation Room	22'11" x 16'5"	375 sq. ft	Yes
2	Patio	18'8" x 21'7"	403 sq. ft	No
3	Utility	19'3" x 12'0"	231 sq. ft	No
4	Storage	11'6" x 3'3"	37 sq. ft	No
5	Laundry	16'10" x 11'11"	200 sq. ft	Yes

Home data report

39 Draper Terrace, Montclair, Essex County, New Jersey, United States, 07042



Room dimensions

Floor 2

Total:959sqft

Excluded: 521sqft

#		Dimensions	sqft	Counted as living area
6	Porch	7'6" x 15'9"	119 sq. ft	No
7	Patio	14'8" x 23'2"	341 sq. ft	No
8	Breakfast Nook	12'9" x 9'1"	116 sq. ft	Yes
9	Foyer	12'10" x 15'3"	196 sq. ft	Yes
10	Deck	6'5" x 6'0"	38 sq. ft	No
11	Entry	6'7" x 3'4"	22 sq. ft	Yes
12	Porch	20'4" x 7'3"	148 sq. ft	No
13	P/R	2'3" x 4'7"	10 sq. ft	Yes
14	Hall	6'10" x 4'7"	31 sq. ft	Yes
15	Hall	5'0" x 3'3"	16 sq. ft	Yes
16	Living Room	13'1" x 14'6"	190 sq. ft	Yes

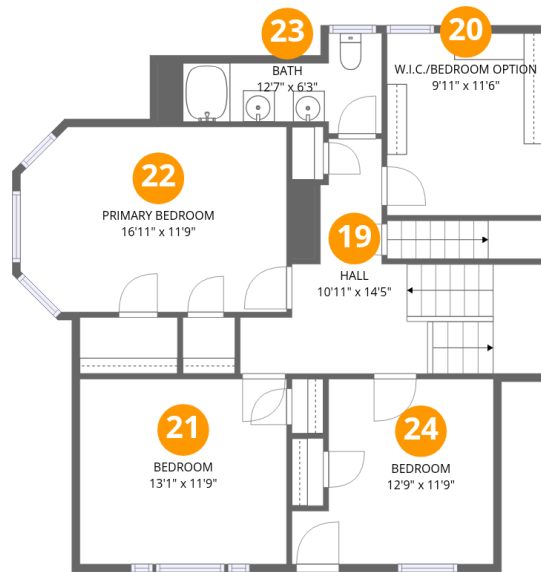
Home data report

**39 Draper Terrace, Montclair, Essex County, New Jersey, United States, 07042**

#		Dimensions	sqft	Counted as living area
17	Kitchen	12'9" x 7'10"	100 sq. ft	Yes
18	Dining Room	19'5" x 12'0"	233 sq. ft	Yes

Home data report

39 Draper Terrace, Montclair, Essex County, New Jersey, United States, 07042



### Room dimensions

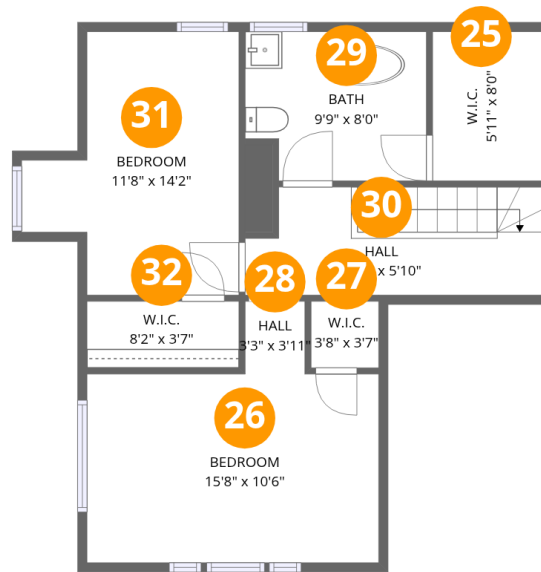
Floor 3

Total:939sqft Excluded: 0sqft

#		Dimensions	sqft	Counted as living area
19	Hall	10'11" x 14'5"	157 sq. ft	Yes
20	W.I.C./BEDROOM Option	9'11" x 11'6"	115 sq. ft	Yes
21	Bedroom	13'1" x 11'9"	154 sq. ft	Yes
22	Primary Bedroom	16'11" x 11'9"	198 sq. ft	Yes
23	Bath	12'7" x 6'3"	79 sq. ft	Yes
24	Bedroom	12'9" x 11'9"	150 sq. ft	Yes

Home data report

39 Draper Terrace, Montclair, Essex County, New Jersey, United States, 07042



## Room dimensions

Floor 4

Total:585sqft

Excluded: 0sqft

#		Dimensions	sqft	Counted as living area
25	W.I.C.	5'11" x 8'0"	47 sq. ft	Yes
26	Bedroom	15'8" x 10'6"	164 sq. ft	Yes
27	W.I.C.	3'8" x 3'7"	13 sq. ft	Yes
28	Hall	3'3" x 3'11"	13 sq. ft	Yes
29	Bath	9'9" x 8'0"	78 sq. ft	Yes
30	Hall	16'0" x 5'10"	93 sq. ft	Yes
31	Bedroom	11'8" x 14'2"	165 sq. ft	Yes
32	W.I.C.	8'2" x 3'7"	29 sq. ft	Yes

# 39 Draper Terrace, Montclair, Essex County, New Jersey, United States, 07042

## 1 Floor 1 - Recreation Room

---



Dimensions: 22'11" x 16'5"  
Area: 375 sq. ft  
Counted as living area: Yes

Heated: Yes  
Finished: Yes  
Enclosed: Yes  
Contiguous: Yes  
Permitted: Yes  
Wet space: No  
Addition: No  
Conversion: No

## 2 Floor 1 - Patio

---



Dimensions: 18'8" x 21'7"  
Area: 403 sq. ft  
Counted as living area: No

Heated: No  
Finished: No  
Enclosed: No  
Contiguous: Yes  
Permitted: Yes  
Wet space: No  
Addition: No  
Conversion: No

### 3 Floor 1 - Utility



Dimensions: 19'3" x 12'0"  
Area: 231 sq. ft  
Counted as living area: No

Heated: Yes  
Finished: No  
Enclosed: Yes  
Contiguous: Yes  
Permitted: Yes  
Wet space: No  
Addition: No  
Conversion: No

### 4 Floor 1 - Storage



Dimensions: 11'6" x 3'3"  
Area: 37 sq. ft  
Counted as living area: No

Heated: No  
Finished: No  
Enclosed: No  
Contiguous: Yes  
Permitted: Yes  
Wet space: No  
Addition: No  
Conversion: No

### 5 Floor 1 - Laundry



Dimensions: 16'10" x 11'11"  
Area: 200 sq. ft  
Counted as living area: Yes

Heated: Yes  
Finished: Yes  
Enclosed: Yes  
Contiguous: Yes  
Permitted: Yes  
Wet space: No  
Addition: No  
Conversion: No

## 6 Floor 2 - Porch



Dimensions: 7'6" x 15'9"  
Area: 119 sq. ft  
Counted as living area: No

Heated: No  
Finished: No  
Enclosed: No  
Contiguous: No  
Permitted: Yes  
Wet space: No  
Addition: No  
Conversion: No

## 7 Floor 2 - Patio



Dimensions: 14'8" x 23'2"  
Area: 341 sq. ft  
Counted as living area: No

Heated: No  
Finished: No  
Enclosed: No  
Contiguous: Yes  
Permitted: Yes  
Wet space: No  
Addition: No  
Conversion: No

## 8 Floor 2 - Breakfast Nook

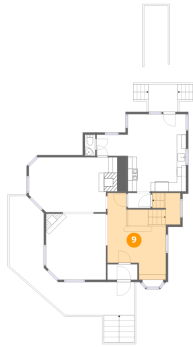


Dimensions: 12'9" x 9'1"  
Area: 116 sq. ft  
Counted as living area: Yes

Heated: Yes  
Finished: Yes  
Enclosed: Yes  
Contiguous: Yes  
Permitted: Yes  
Wet space: No  
Addition: No  
Conversion: No

**9** Floor 2 - Foyer

---



Dimensions: 12'10" x 15'3"  
Area: 196 sq. ft  
Counted as living area: Yes

Heated: Yes  
Finished: Yes  
Enclosed: Yes  
Contiguous: Yes  
Permitted: Yes  
Wet space: No  
Addition: No  
Conversion: No

**10** Floor 2 - Deck

---



Dimensions: 6'5" x 6'0"  
Area: 38 sq. ft  
Counted as living area: No

Heated: No  
Finished: No  
Enclosed: No  
Contiguous: Yes  
Permitted: Yes  
Wet space: No  
Addition: No  
Conversion: No

**11** Floor 2 - Entry

---



Dimensions: 6'7" x 3'4"  
Area: 22 sq. ft  
Counted as living area: Yes

Heated: Yes  
Finished: Yes  
Enclosed: Yes  
Contiguous: Yes  
Permitted: Yes  
Wet space: No  
Addition: No  
Conversion: No

## 12 Floor 2 - Porch



Dimensions: 20'4" x 7'3"  
Area: 148 sq. ft  
Counted as living area: No

Heated: No  
Finished: No  
Enclosed: No  
Contiguous: Yes  
Permitted: Yes  
Wet space: No  
Addition: No  
Conversion: No

## 13 Floor 2 - P/R



Dimensions: 2'3" x 4'7"  
Area: 10 sq. ft  
Counted as living area: Yes

Heated: Yes  
Finished: Yes  
Enclosed: Yes  
Contiguous: Yes  
Permitted: Yes  
Wet space: No  
Addition: No  
Conversion: No

## 14 Floor 2 - Hall



Dimensions: 6'10" x 4'7"  
Area: 31 sq. ft  
Counted as living area: Yes

Heated: Yes  
Finished: Yes  
Enclosed: Yes  
Contiguous: Yes  
Permitted: Yes  
Wet space: No  
Addition: No  
Conversion: No

### 15 Floor 2 - Hall



Dimensions: 5'0" x 3'3"  
Area: 16 sq. ft  
Counted as living area: Yes

Heated: Yes  
Finished: Yes  
Enclosed: Yes  
Contiguous: Yes  
Permitted: Yes  
Wet space: No  
Addition: No  
Conversion: No

### 16 Floor 2 - Living Room



Dimensions: 13'1" x 14'6"  
Area: 190 sq. ft  
Counted as living area: Yes

Heated: Yes  
Finished: Yes  
Enclosed: Yes  
Contiguous: Yes  
Permitted: Yes  
Wet space: No  
Addition: No  
Conversion: No

### 17 Floor 2 - Kitchen



Dimensions: 12'9" x 7'10"  
Area: 100 sq. ft  
Counted as living area: Yes

Heated: Yes  
Finished: Yes  
Enclosed: Yes  
Contiguous: Yes  
Permitted: Yes  
Wet space: No  
Addition: No  
Conversion: No

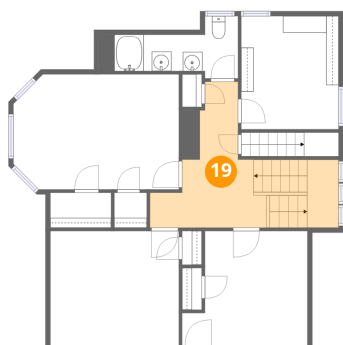
### 18 Floor 2 - Dining Room



Dimensions: 19'5" x 12'0"  
Area: 233 sq. ft  
Counted as living area: Yes

Heated: Yes  
Finished: Yes  
Enclosed: Yes  
Contiguous: Yes  
Permitted: Yes  
Wet space: No  
Addition: No  
Conversion: No

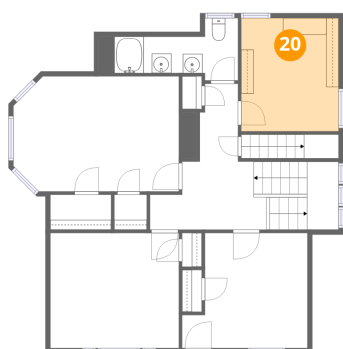
### 19 Floor 3 - Hall



Dimensions: 10'11" x 14'5"  
Area: 157 sq. ft  
Counted as living area: Yes

Heated: Yes  
Finished: Yes  
Enclosed: Yes  
Contiguous: Yes  
Permitted: Yes  
Wet space: No  
Addition: No  
Conversion: No

### 20 Floor 3 - W.I.C./BEDROOM Option



Dimensions: 9'11" x 11'6"  
Area: 115 sq. ft  
Counted as living area: Yes

Heated: Yes  
Finished: Yes  
Enclosed: Yes  
Contiguous: Yes  
Permitted: Yes  
Wet space: No  
Addition: No  
Conversion: No

39 Draper Terrace, Montclair, Essex County, New Jersey, United States, 07042

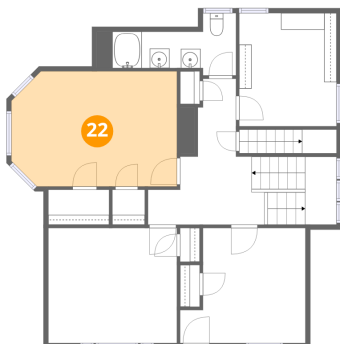
**21** Floor 3 - Bedroom



Dimensions: 13'1" x 11'9"  
Area: 154 sq. ft  
Counted as living area: Yes

Heated: Yes  
Finished: Yes  
Enclosed: Yes  
Contiguous: Yes  
Permitted: Yes  
Wet space: No  
Addition: No  
Conversion: No

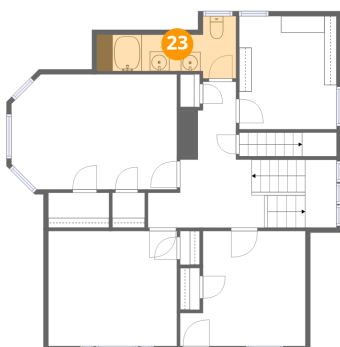
**22** Floor 3 - Primary Bedroom



Dimensions: 16'11" x 11'9"  
Area: 198 sq. ft  
Counted as living area: Yes

Heated: Yes  
Finished: Yes  
Enclosed: Yes  
Contiguous: Yes  
Permitted: Yes  
Wet space: No  
Addition: No  
Conversion: No

**23** Floor 3 - Bath



Dimensions: 12'7" x 6'3"  
Area: 79 sq. ft  
Counted as living area: Yes

Heated: Yes  
Finished: Yes  
Enclosed: Yes  
Contiguous: Yes  
Permitted: Yes  
Wet space: Yes  
Addition: No  
Conversion: No

39 Draper Terrace, Montclair, Essex County, New Jersey, United States, 07042

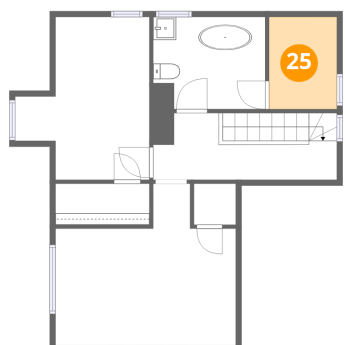
**24** Floor 3 - Bedroom



Dimensions: 12'9" x 11'9"  
Area: 150 sq. ft  
Counted as living area: Yes

Heated: Yes  
Finished: Yes  
Enclosed: Yes  
Contiguous: Yes  
Permitted: Yes  
Wet space: No  
Addition: No  
Conversion: No

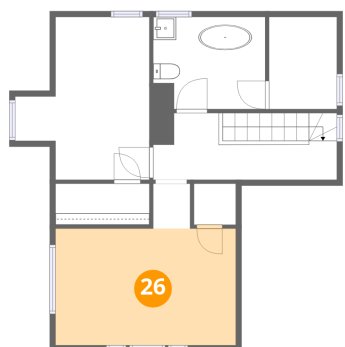
**25** Floor 4 - W.I.C.



Dimensions: 5'11" x 8'0"  
Area: 47 sq. ft  
Counted as living area: Yes

Heated: Yes  
Finished: Yes  
Enclosed: Yes  
Contiguous: Yes  
Permitted: Yes  
Wet space: No  
Addition: No  
Conversion: No

**26** Floor 4 - Bedroom



Dimensions: 15'8" x 10'6"  
Area: 164 sq. ft  
Counted as living area: Yes

Heated: Yes  
Finished: Yes  
Enclosed: Yes  
Contiguous: Yes  
Permitted: Yes  
Wet space: No  
Addition: No  
Conversion: No

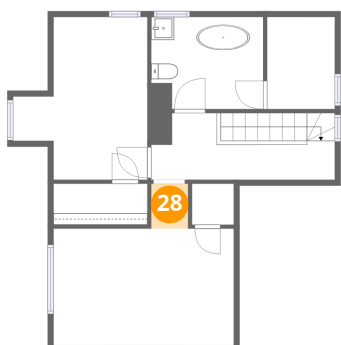
**27** Floor 4 - W.I.C.



Dimensions: 3'8" x 3'7"  
Area: 13 sq. ft  
Counted as living area: Yes

Heated: Yes  
Finished: Yes  
Enclosed: Yes  
Contiguous: Yes  
Permitted: Yes  
Wet space: No  
Addition: No  
Conversion: No

**28** Floor 4 - Hall



Dimensions: 3'3" x 3'11"  
Area: 13 sq. ft  
Counted as living area: Yes

Heated: Yes  
Finished: Yes  
Enclosed: Yes  
Contiguous: Yes  
Permitted: Yes  
Wet space: No  
Addition: No  
Conversion: No

**29** Floor 4 - Bath

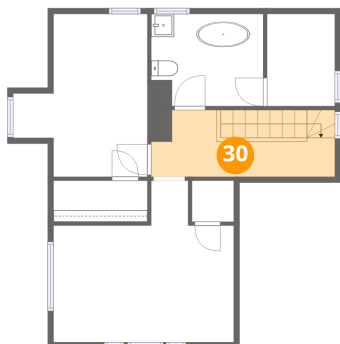


Dimensions: 9'9" x 8'0"  
Area: 78 sq. ft  
Counted as living area: Yes

Heated: Yes  
Finished: Yes  
Enclosed: Yes  
Contiguous: Yes  
Permitted: Yes  
Wet space: Yes  
Addition: No  
Conversion: No

39 Draper Terrace, Montclair, Essex County, New Jersey, United States, 07042

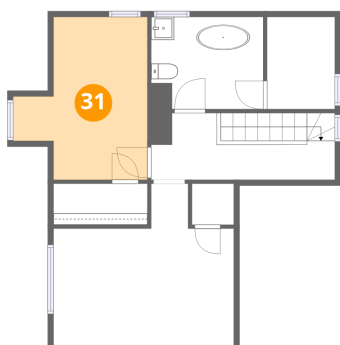
**30** Floor 4 - Hall



Dimensions: 16'0" x 5'10"  
Area: 93 sq. ft  
Counted as living area: Yes

Heated: Yes  
Finished: Yes  
Enclosed: Yes  
Contiguous: Yes  
Permitted: Yes  
Wet space: No  
Addition: No  
Conversion: No

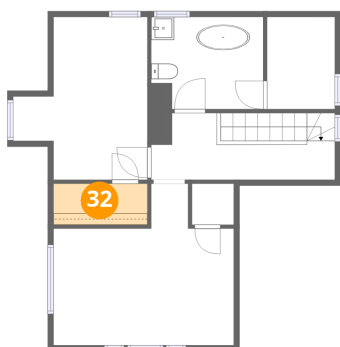
**31** Floor 4 - Bedroom



Dimensions: 11'8" x 14'2"  
Area: 165 sq. ft  
Counted as living area: Yes

Heated: Yes  
Finished: Yes  
Enclosed: Yes  
Contiguous: Yes  
Permitted: Yes  
Wet space: No  
Addition: No  
Conversion: No

**32** Floor 4 - W.I.C.



Dimensions: 8'2" x 3'7"  
Area: 29 sq. ft  
Counted as living area: Yes

Heated: Yes  
Finished: Yes  
Enclosed: Yes  
Contiguous: Yes  
Permitted: Yes  
Wet space: No  
Addition: No  
Conversion: No