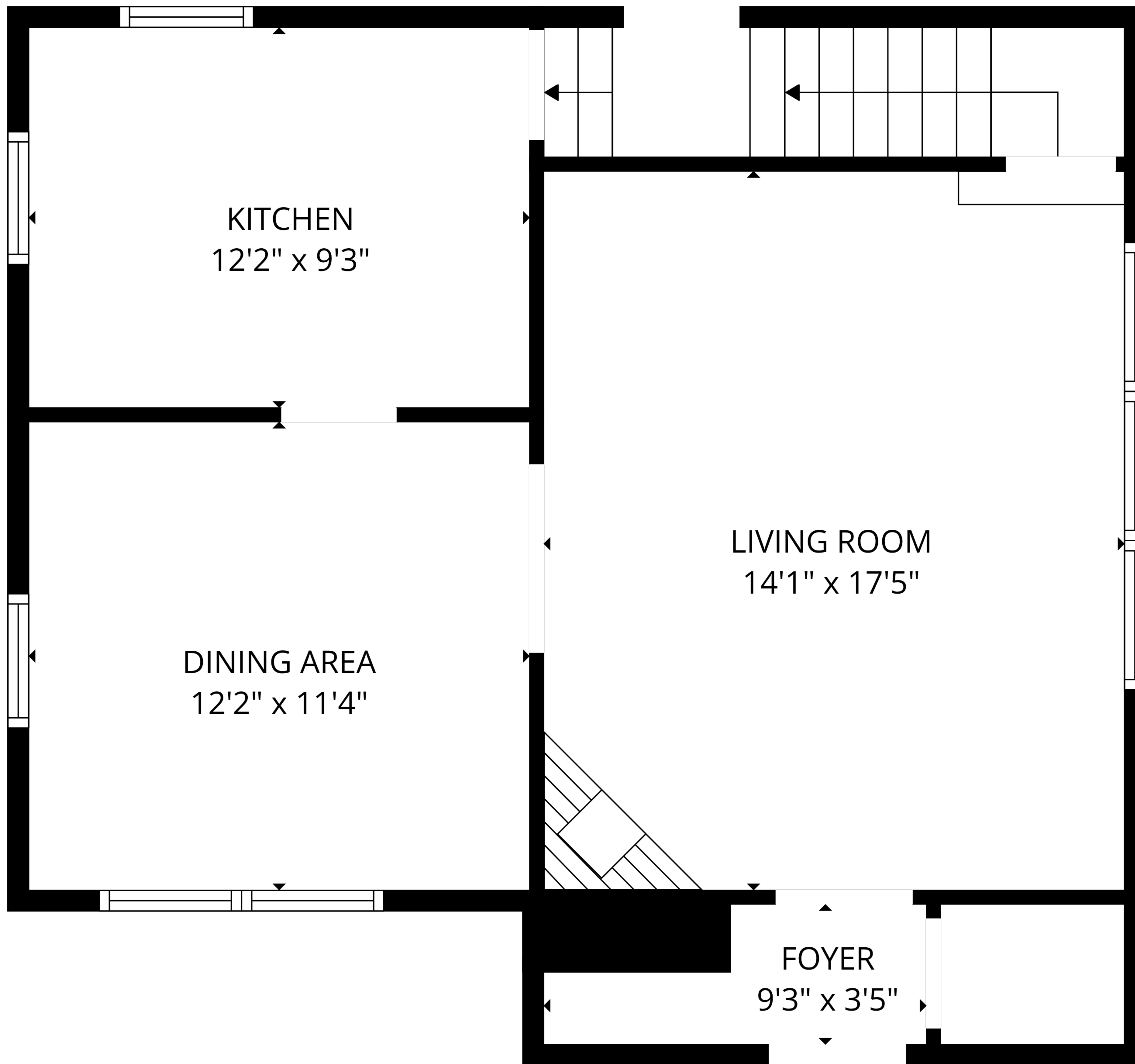


BASEMENT
26'6" x 20'11"

STORAGE
13'1" x 3'5"

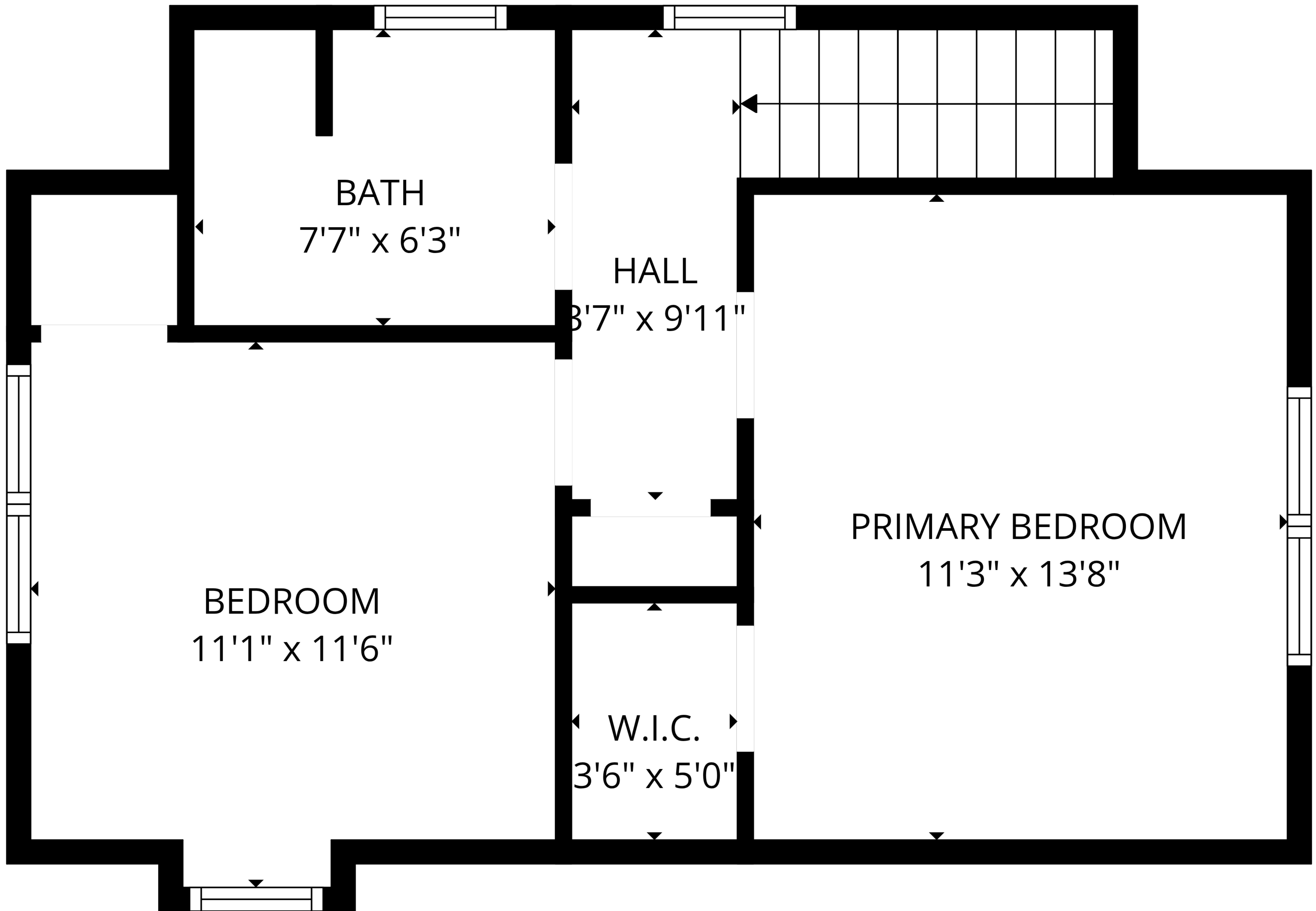
TOTAL: 1037 sq. ft

Basement 1: 0 sq. ft, 1st floor: 607 sq. ft, 2nd floor: 430 sq. ft
EXCLUDED AREAS: STORAGE: 49 sq. ft, BASEMENT: 554 sq. ft, LOW CEILING: 3 sq. ft,
WALLS: 149 sq. ft



TOTAL: 1037 sq. ft

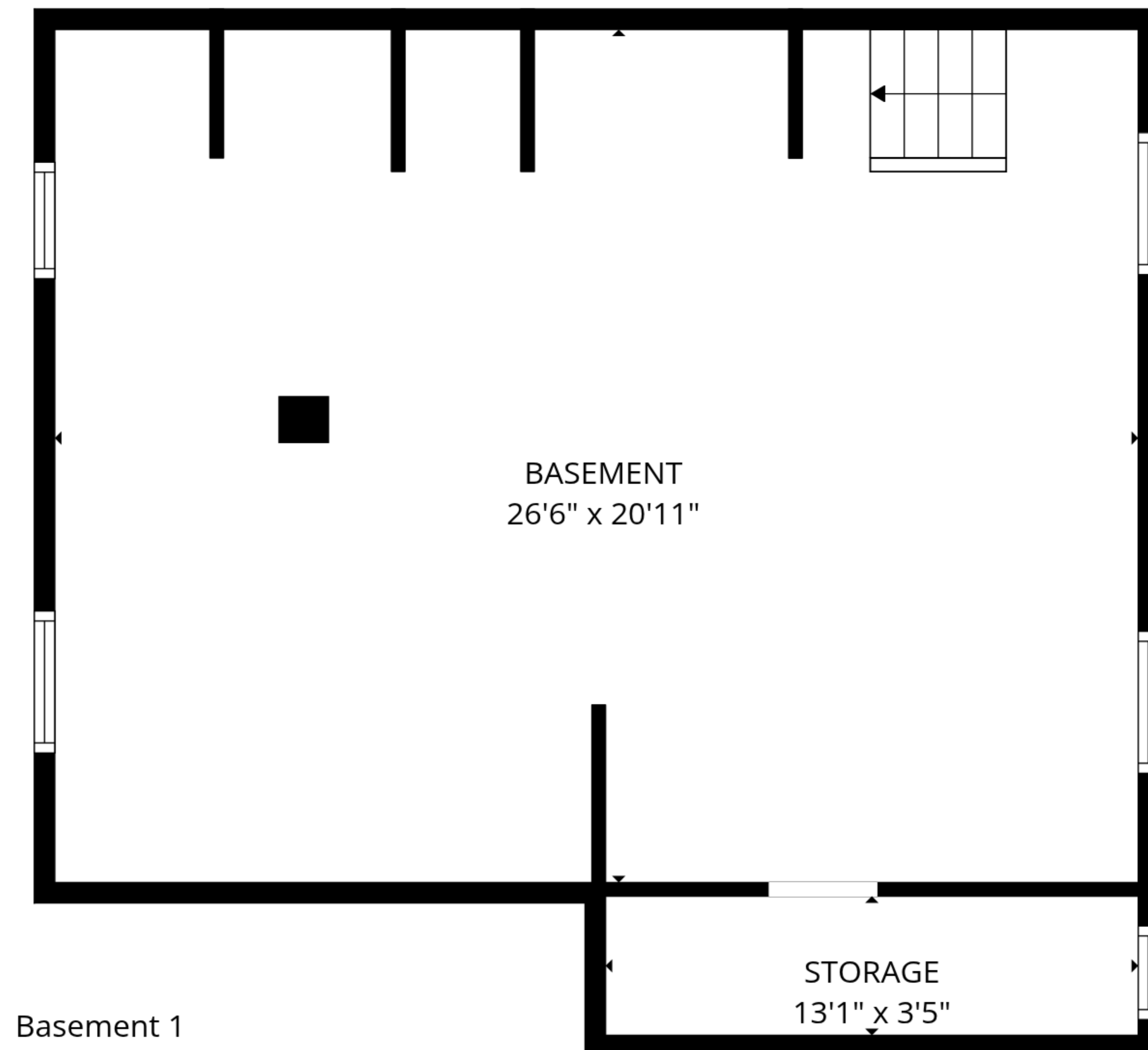
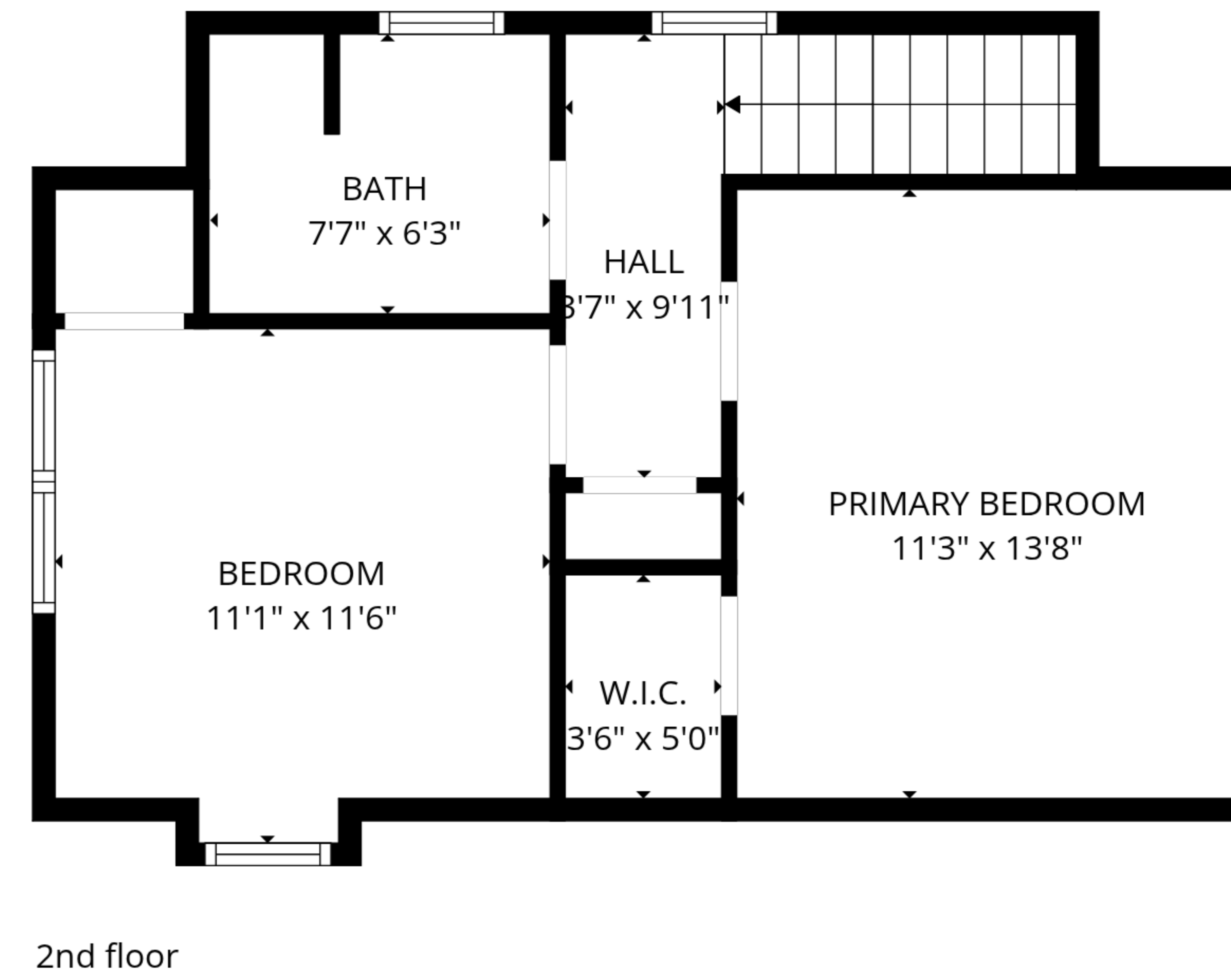
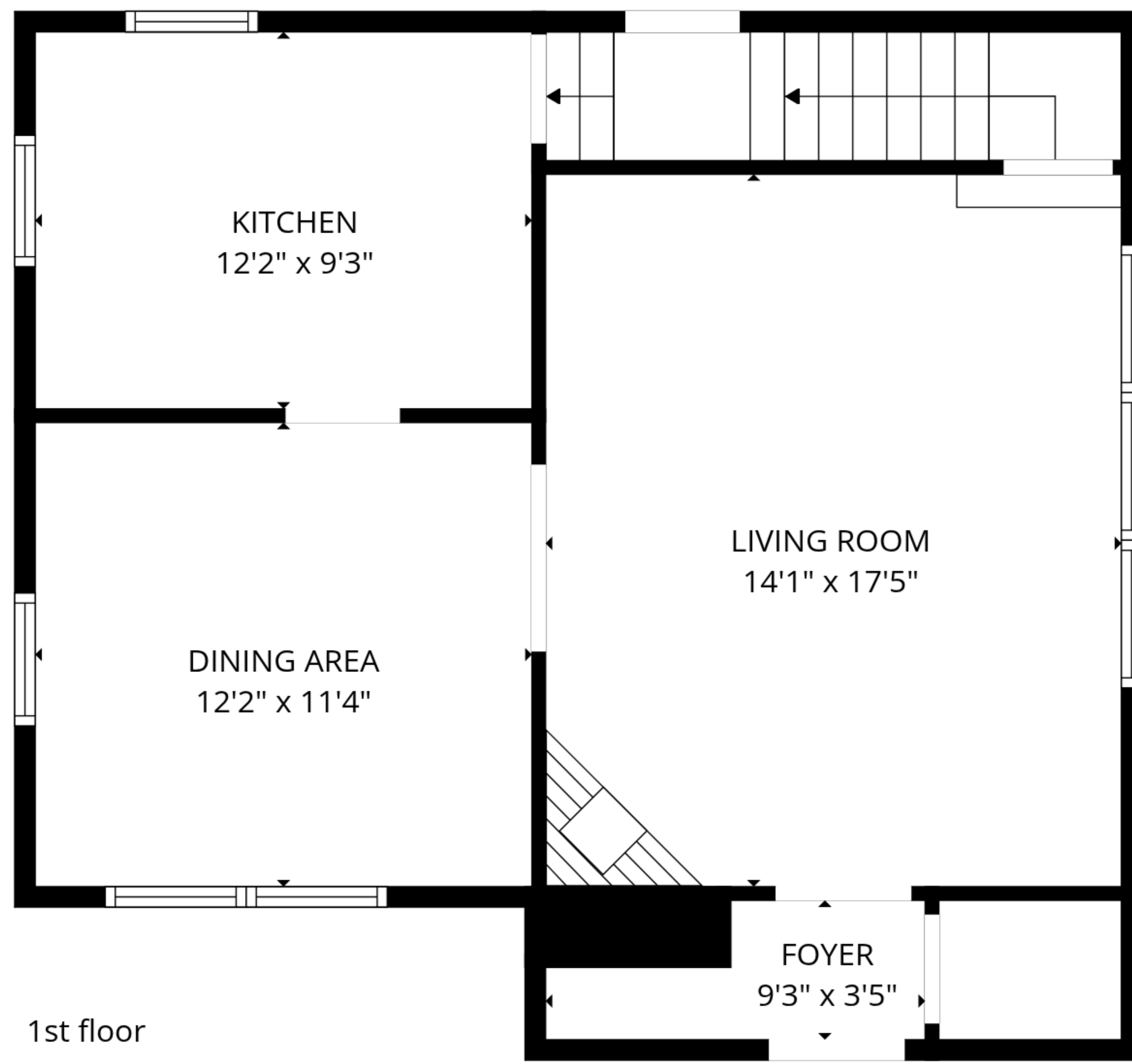
Basement 1: 0 sq. ft, 1st floor: 607 sq. ft, 2nd floor: 430 sq. ft
EXCLUDED AREAS: STORAGE: 49 sq. ft, BASEMENT: 554 sq. ft, LOW CEILING: 3 sq. ft,
WALLS: 149 sq. ft



TOTAL: 1037 sq. ft

Basement 1: 0 sq. ft, 1st floor: 607 sq. ft, 2nd floor: 430 sq. ft

EXCLUDED AREAS: STORAGE: 49 sq. ft, BASEMENT: 554 sq. ft, LOW CEILING: 3 sq. ft,
WALLS: 149 sq. ft



TOTAL: 1037 sq. ft
 Basement 1: 0 sq. ft, 1st floor: 607 sq. ft, 2nd floor: 430 sq. ft
 EXCLUDED AREAS: STORAGE: 49 sq. ft, BASEMENT: 554 sq. ft, LOW CEILING: 3 sq. ft,
 WALLS: 149 sq. ft