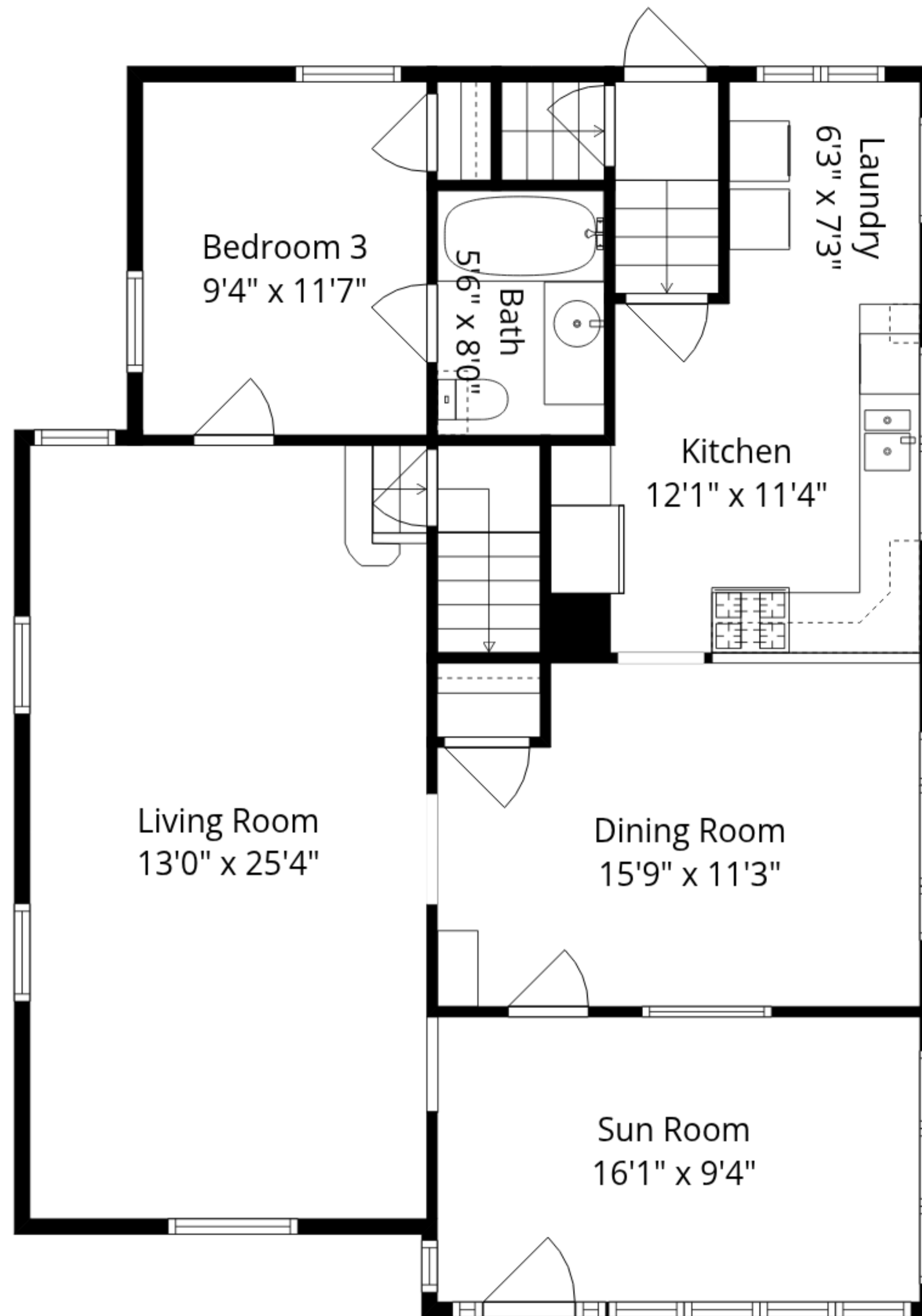


Basement
25'8" x 34'11"

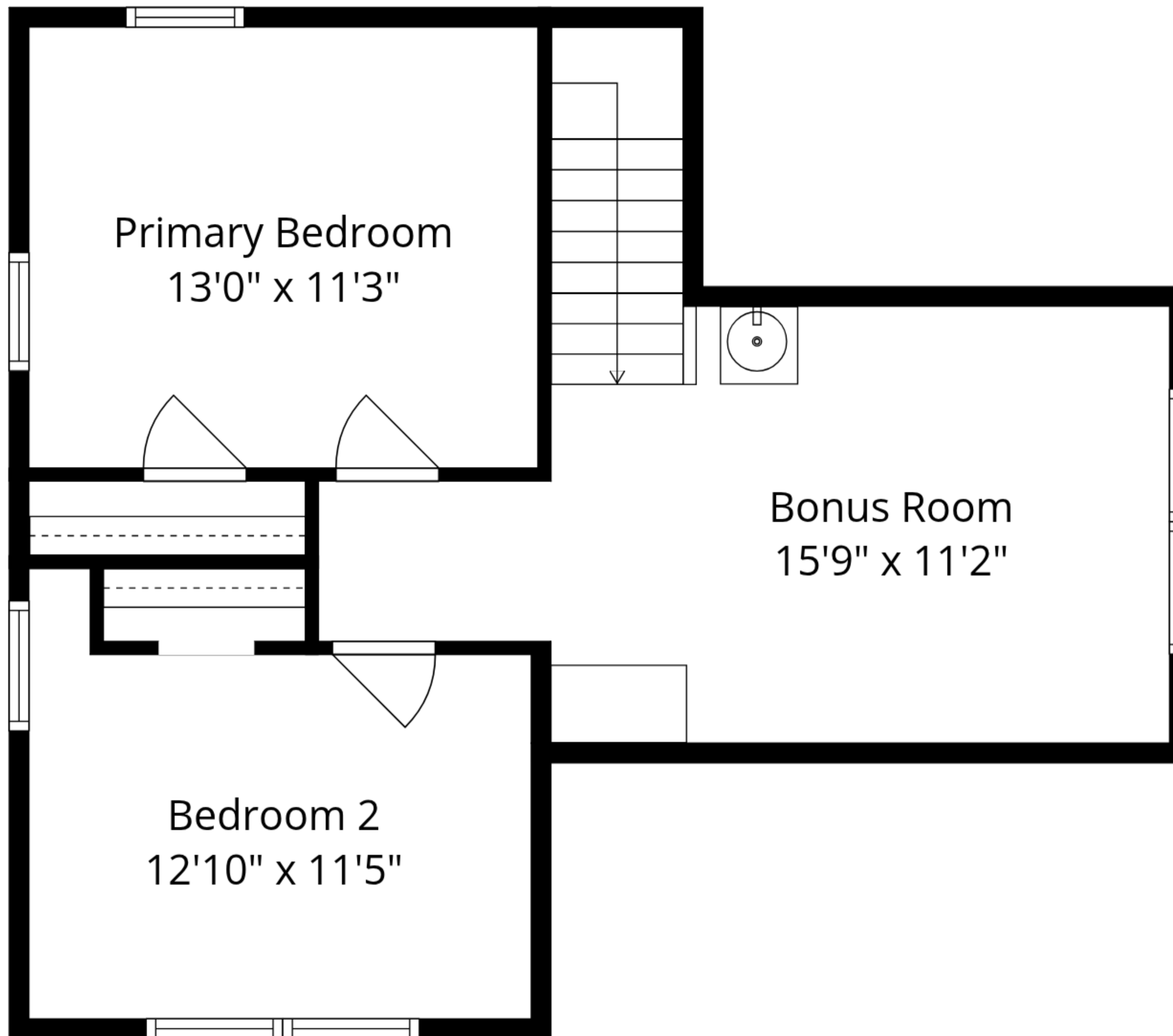
Total GLA: 1641 sq. ft | Total: 2813 sq. ft
Lower floor: (Excluded areas 1074 sq. ft)
Main floor: 1151 sq. ft
Upper floor: 490 sq. ft (Excluded areas 98 sq. ft)

Sizes And Dimensions Are Approximate. Actual May Vary.



Total GLA: 1641 sq. ft | Total: 2813 sq. ft
Lower floor: (Excluded areas 1074 sq. ft)
Main floor: 1151 sq. ft
Upper floor: 490 sq. ft (Excluded areas 98 sq. ft)

Sizes And Dimensions Are Approximate. Actual May Vary.



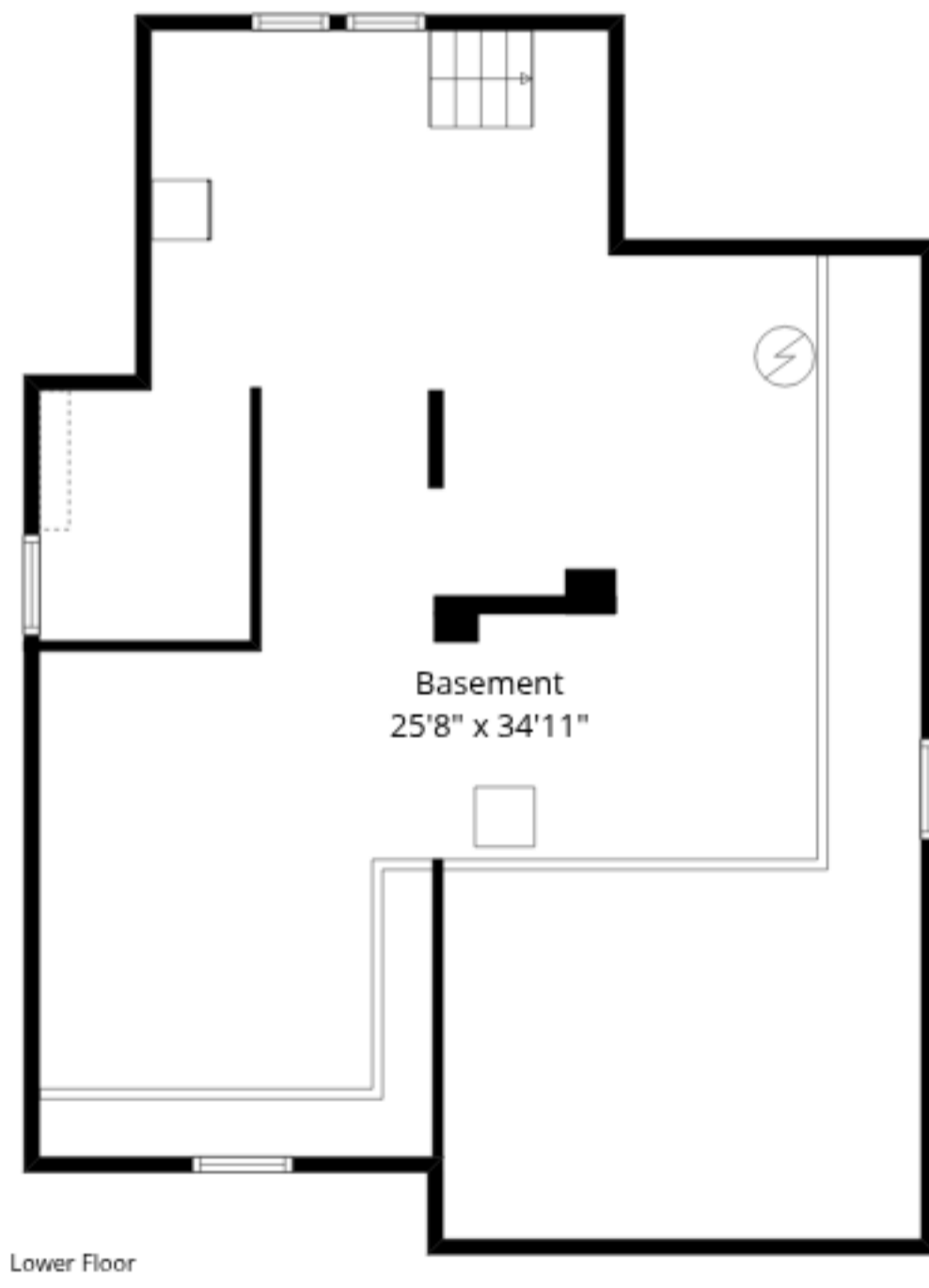
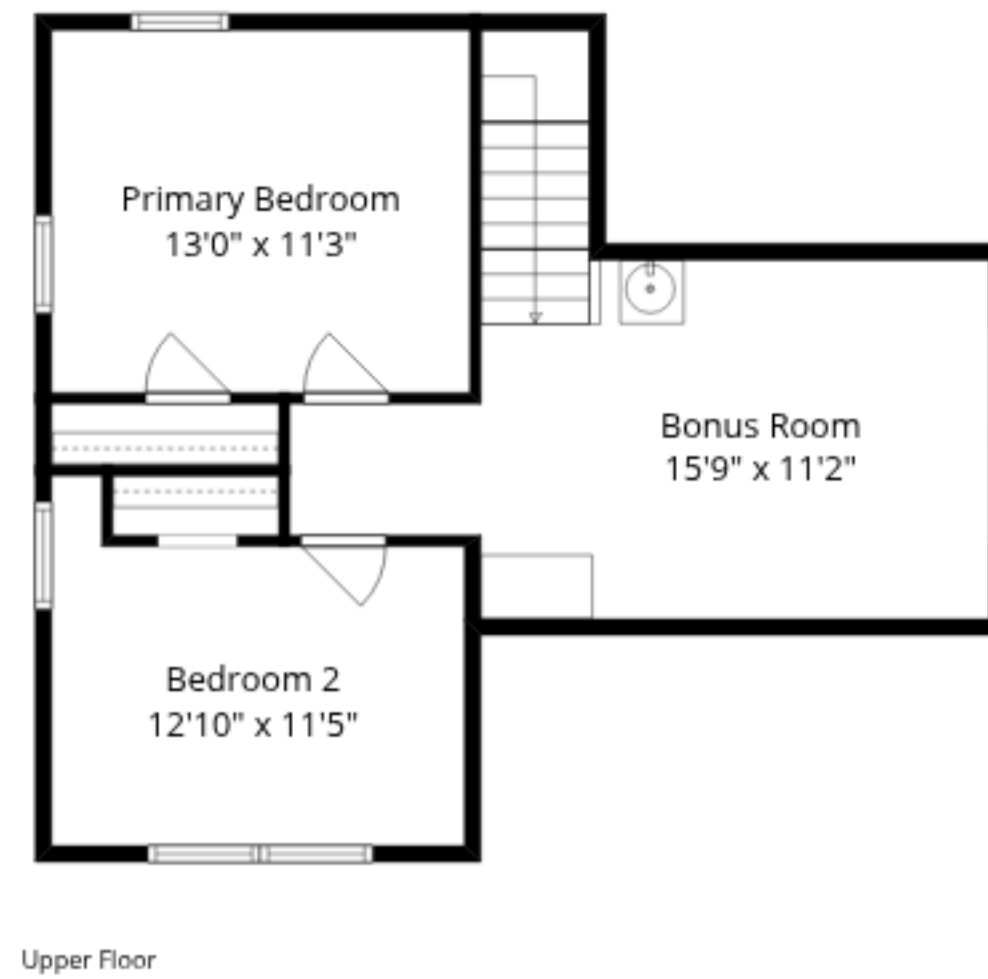
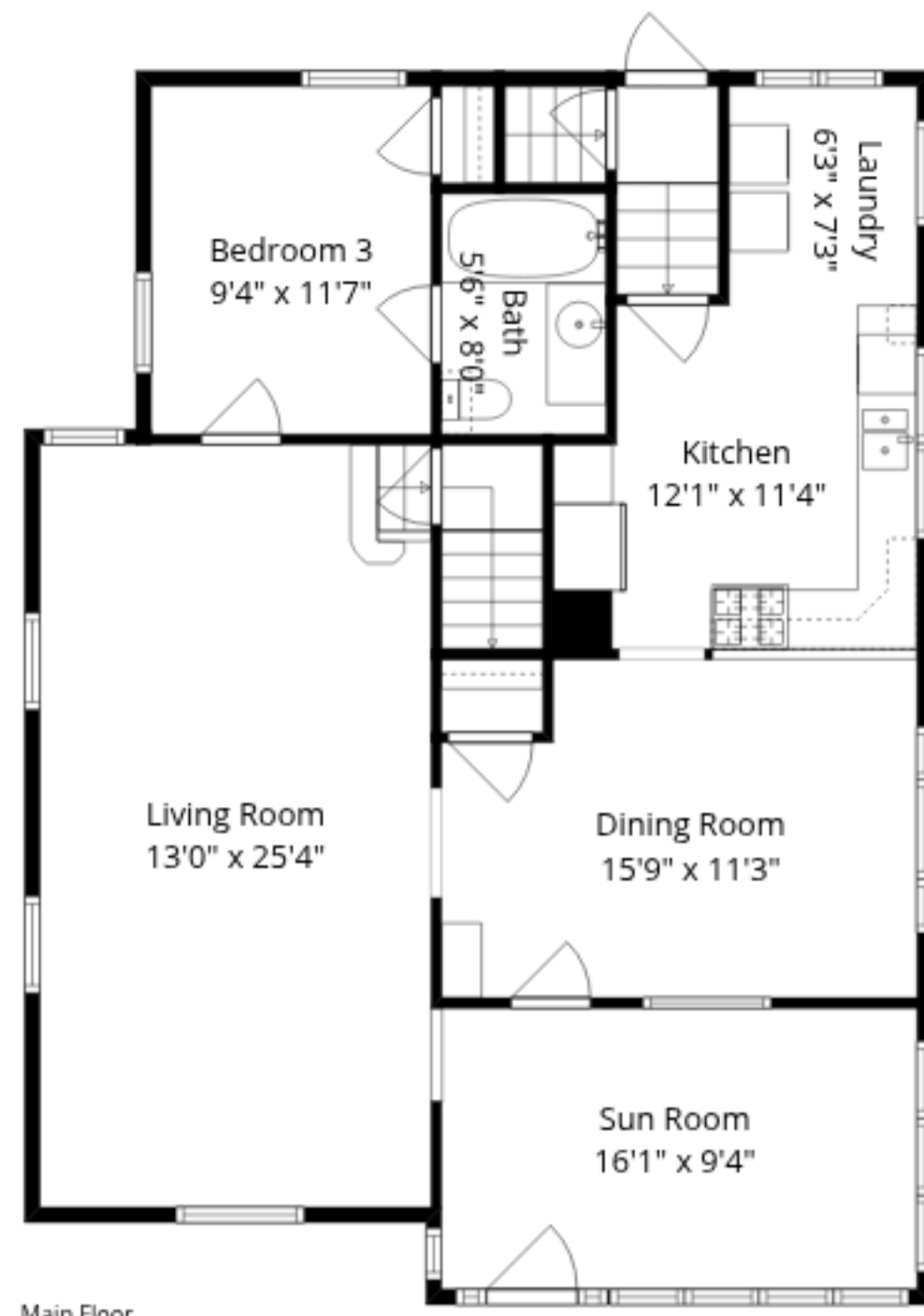
Total GLA: 1641 sq. ft | Total: 2813 sq. ft

Lower floor: (Excluded areas 1074 sq. ft)

Main floor: 1151 sq. ft

Upper floor: 490 sq. ft (Excluded areas 98 sq. ft)

Sizes And Dimensions Are Approximate. Actual May Vary.



Total GLA: 1641 sq. ft | Total: 2813 sq. ft
 Lower floor: (Excluded areas 1074 sq. ft)
 Main floor: 1151 sq. ft
 Upper floor: 490 sq. ft (Excluded areas 98 sq. ft)

Sizes And Dimensions Are Approximate. Actual May Vary.