

Home data report

831 Broadway Blvd, Peterborough, ON, CA




Total Area: 2140 sq. ft

Basement: 744 sq. ft, 1st Floor: 782 sq. ft, 2nd Floor: 614 sq. ft

Excluded: Garage 370 sq. ft, Deck 35 sq. ft, Walls: 218 sq. ft

Property summary

 **3** Floors

 **3** Bedrooms

 **2** Bathrooms

Home data report

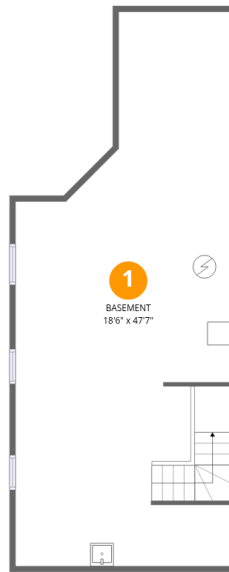
831 Broadway Blvd, Peterborough, ON, CA

 **1**
Half baths

 **1**
Garages

Home data report

831 Broadway Blvd, Peterborough, ON, CA



Room dimensions

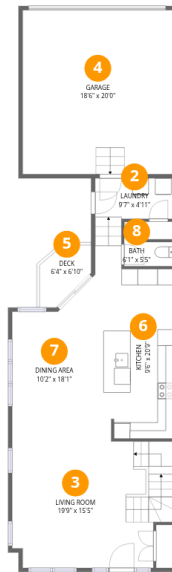
Floor 1 Below grade

Total: 744sqft Excluded: 0sqft

#		Dimensions	sqft	Counted as living area
1	Basement	18'6" x 47'7"	878 sq. ft	Yes

Home data report

831 Broadway Blvd, Peterborough, ON, CA



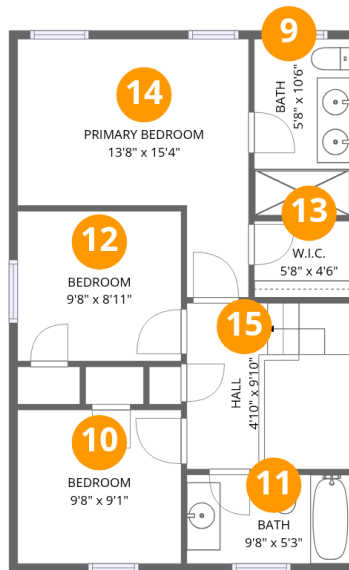
Room dimensions

Floor 2

Total: 782 sqft

Excluded: 405 sqft

#		Dimensions	sqft	Counted as living area
2	Laundry	9'7" x 4'11"	48 sq. ft	Yes
3	Living Room	19'9" x 15'5"	305 sq. ft	Yes
4	Garage	18'6" x 20'0"	370 sq. ft	No
5	Deck	6'4" x 6'10"	43 sq. ft	No
6	Kitchen	9'6" x 20'9"	197 sq. ft	Yes
7	Dining Area	10'2" x 18'1"	184 sq. ft	Yes
8	Bath	6'1" x 5'5"	33 sq. ft	Yes



Room dimensions

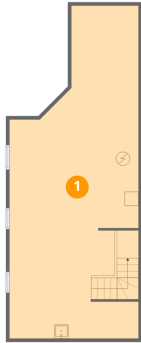
Floor 3

Total: 614 sqft

Excluded: 0 sqft

#		Dimensions	sqft	Counted as living area
9	Bath	5'8" x 10'6"	60 sq. ft	Yes
10	Bedroom	9'8" x 9'1"	88 sq. ft	Yes
11	Bath	9'8" x 5'3"	51 sq. ft	Yes
12	Bedroom	9'8" x 8'11"	86 sq. ft	Yes
13	W.I.C.	5'8" x 4'6"	26 sq. ft	Yes
14	Primary Bedroom	13'8" x 15'4"	210 sq. ft	Yes
15	Hall	4'10" x 9'10"	47 sq. ft	Yes

1 Floor 1 - Basement



Dimensions: 18'6" x 47'7"
Area: 878 sq. ft
Counted as living area: Yes

Heated: Yes
Finished: Yes
Enclosed: Yes
Contiguous: Yes
Permitted: Yes
Wet space: No
Addition: No
Conversion: No

2 Floor 2 - Laundry



Dimensions: 9'7" x 4'11"
Area: 48 sq. ft
Counted as living area: Yes

Heated: Yes
Finished: Yes
Enclosed: Yes
Contiguous: Yes
Permitted: Yes
Wet space: No
Addition: No
Conversion: No

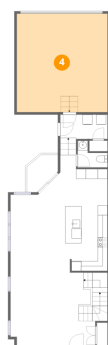
3 Floor 2 - Living Room



Dimensions: 19'9" x 15'5"
Area: 305 sq. ft
Counted as living area: Yes

Heated: Yes
Finished: Yes
Enclosed: Yes
Contiguous: Yes
Permitted: Yes
Wet space: No
Addition: No
Conversion: No

4 Floor 2 - Garage



Dimensions: 18'6" x 20'0"
Area: 370 sq. ft
Counted as living area: No

Heated: No
Finished: No
Enclosed: Yes
Contiguous: Yes
Permitted: Yes
Wet space: No
Addition: No
Conversion: No

5 Floor 2 - Deck



Dimensions: 6'4" x 6'10"
Area: 43 sq. ft
Counted as living area: No

Heated: No
Finished: No
Enclosed: No
Contiguous: Yes
Permitted: Yes
Wet space: No
Addition: No
Conversion: No

6 Floor 2 - Kitchen



Dimensions: 9'6" x 20'9"
Area: 197 sq. ft
Counted as living area: Yes

Heated: Yes
Finished: Yes
Enclosed: Yes
Contiguous: Yes
Permitted: Yes
Wet space: No
Addition: No
Conversion: No

7 Floor 2 - Dining Area



Dimensions: 10'2" x 18'1"
Area: 184 sq. ft
Counted as living area: Yes

Heated: Yes
Finished: Yes
Enclosed: Yes
Contiguous: Yes
Permitted: Yes
Wet space: No
Addition: No
Conversion: No

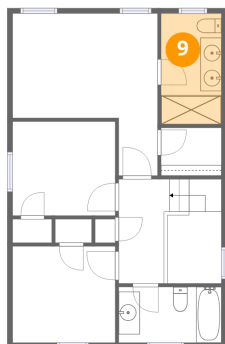
8 Floor 2 - Bath



Dimensions: 6'1" x 5'5"
Area: 33 sq. ft
Counted as living area: Yes

Heated: Yes
Finished: Yes
Enclosed: Yes
Contiguous: Yes
Permitted: Yes
Wet space: Yes
Addition: No
Conversion: No

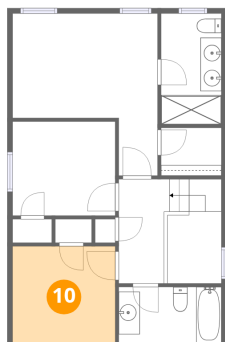
9 Floor 3 - Bath



Dimensions: 5'8" x 10'6"
Area: 60 sq. ft
Counted as living area: Yes

Heated: Yes
Finished: Yes
Enclosed: Yes
Contiguous: Yes
Permitted: Yes
Wet space: Yes
Addition: No
Conversion: No

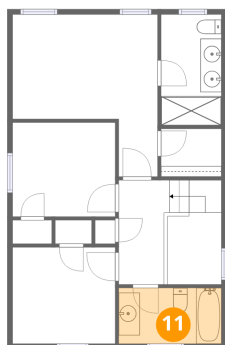
10 Floor 3 - Bedroom



Dimensions: 9'8" x 9'1"
Area: 88 sq. ft
Counted as living area: Yes

Heated: Yes
Finished: Yes
Enclosed: Yes
Contiguous: Yes
Permitted: Yes
Wet space: No
Addition: No
Conversion: No

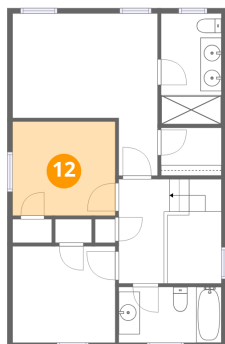
11 Floor 3 - Bath



Dimensions: 9'8" x 5'3"
Area: 51 sq. ft
Counted as living area: Yes

Heated: Yes
Finished: Yes
Enclosed: Yes
Contiguous: Yes
Permitted: Yes
Wet space: Yes
Addition: No
Conversion: No

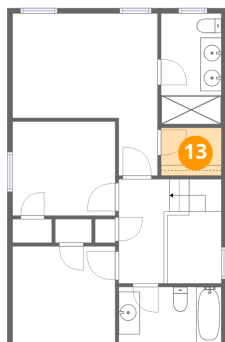
12 Floor 3 - Bedroom



Dimensions: 9'8" x 8'11"
Area: 86 sq. ft
Counted as living area: Yes

Heated: Yes
Finished: Yes
Enclosed: Yes
Contiguous: Yes
Permitted: Yes
Wet space: No
Addition: No
Conversion: No

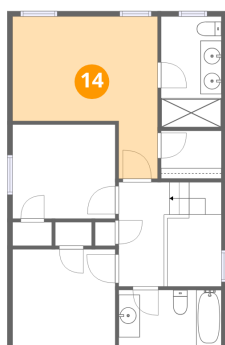
13 Floor 3 - W.I.C.



Dimensions: 5'8" x 4'6"
Area: 26 sq. ft
Counted as living area: Yes

Heated: Yes
Finished: Yes
Enclosed: Yes
Contiguous: Yes
Permitted: Yes
Wet space: No
Addition: No
Conversion: No

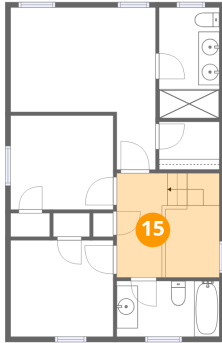
14 Floor 3 - Primary Bedroom



Dimensions: 13'8" x 15'4"
Area: 210 sq. ft
Counted as living area: Yes

Heated: Yes
Finished: Yes
Enclosed: Yes
Contiguous: Yes
Permitted: Yes
Wet space: No
Addition: No
Conversion: No

15 Floor 3 - Hall



Dimensions: 4'10" x 9'10"
Area: 47 sq. ft
Counted as living area: Yes

Heated: Yes
Finished: Yes
Enclosed: Yes
Contiguous: Yes
Permitted: Yes
Wet space: No
Addition: No
Conversion: No