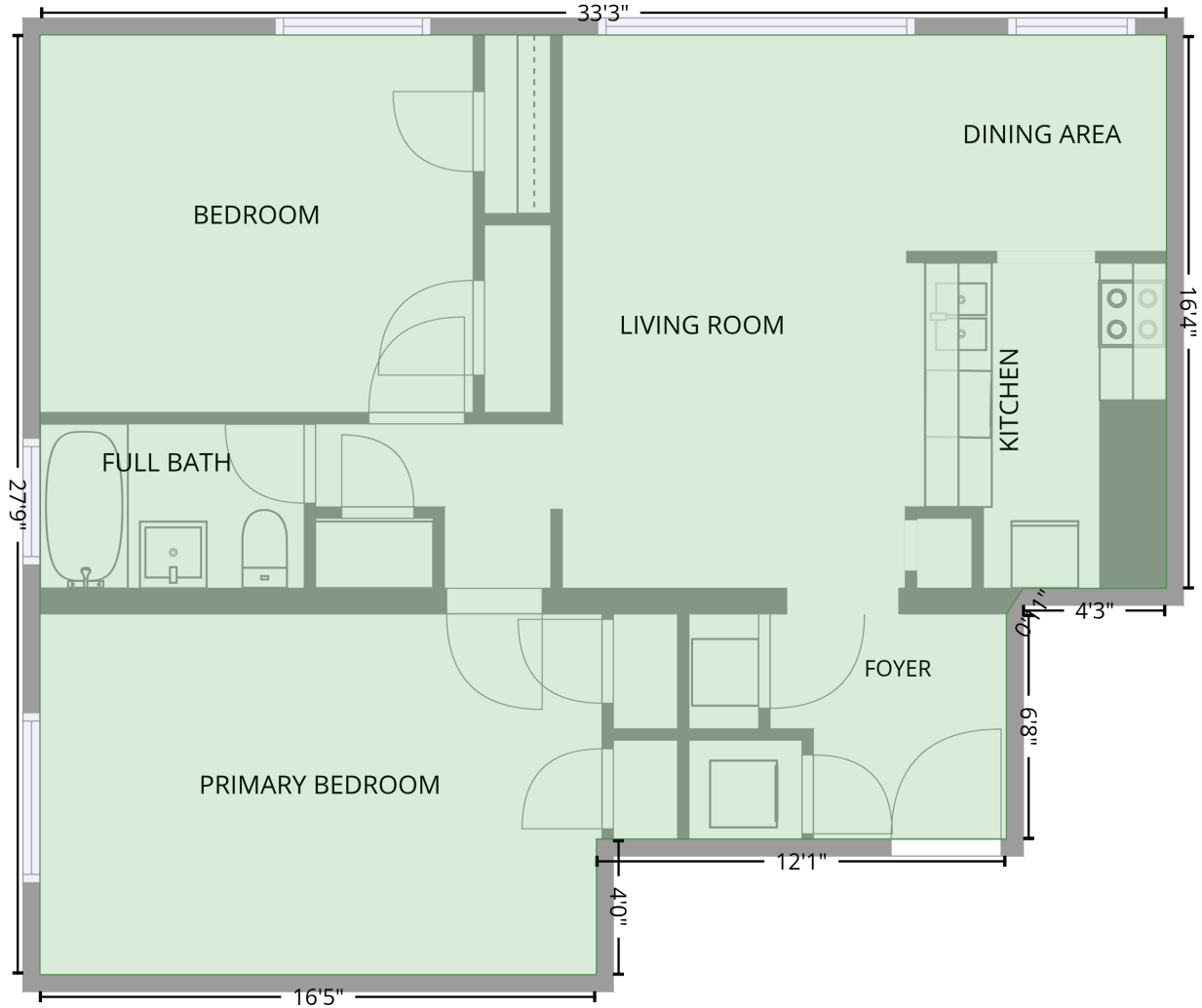


# 1700 North Elm Street, Greensboro, Guilford County, North Carolina, United States, 27408, B3

Gross Living Area: 821 sq. ft

## Level 1

1st floor  
[AREA: 821]



Space	Area (sq. ft)	Calculation <small>Coordinate Polygon Area Algorithm using inches</small>
1st floor (Living area)	821	$-((406.2 + 406.2) * (40.2 - 236.3) + (406.2 + 355.4) * (236.3 - 236.3) + (355.4 + 349.5) * (236.3 - 245.3) + (349.5 + 349.5) * (245.3 - 325.1) + (349.5 + 204.2) * (325.1 - 325.1) + (204.2 + 204.2) * (325.1 - 373.1) + (204.2 + 7.1) * (373.1 - 373.1) + (7.1 + 7.1) * (373.1 - 40.2) + (7.1 + 406.2) * (40.2 - 40.2)) * 0.5 * 0.00694$