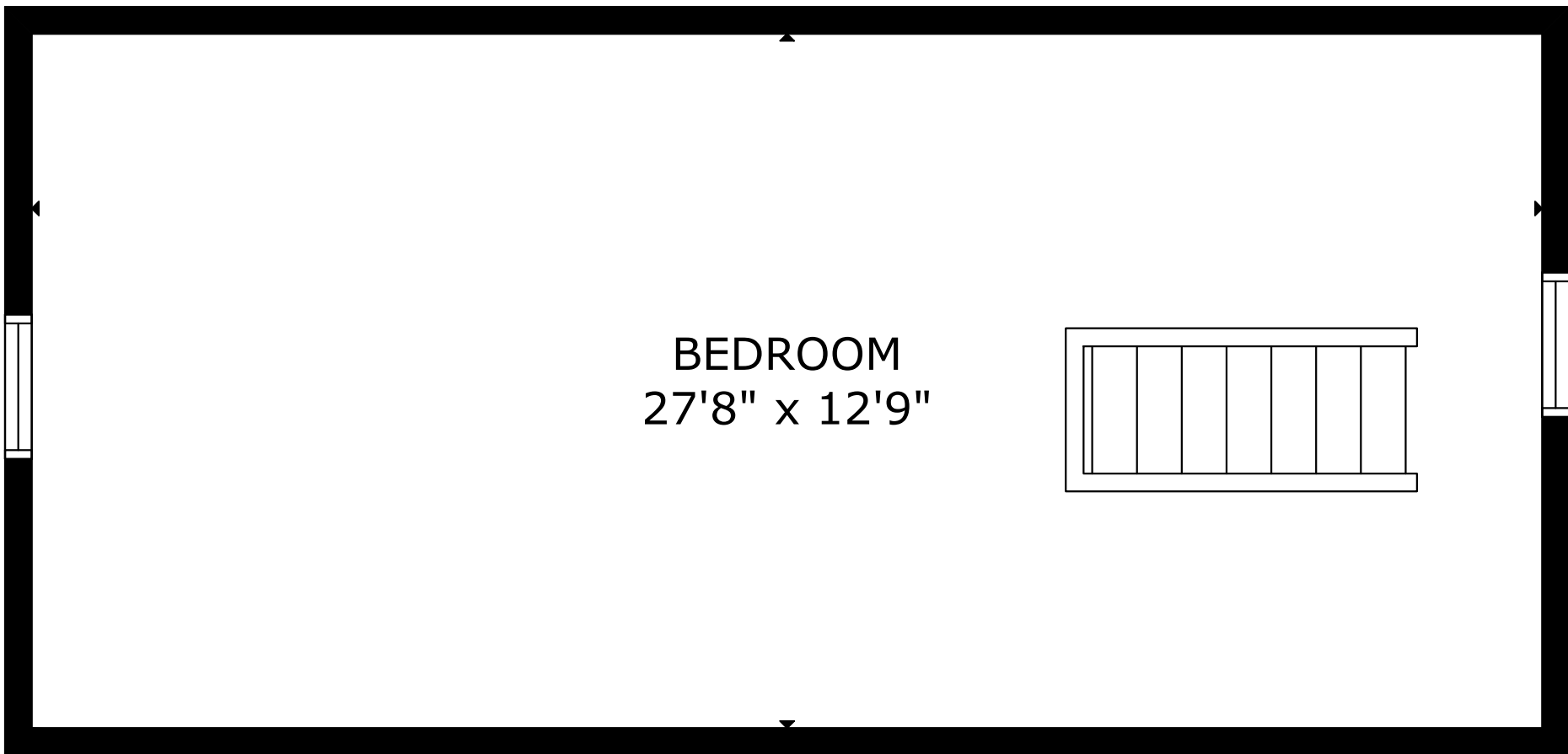
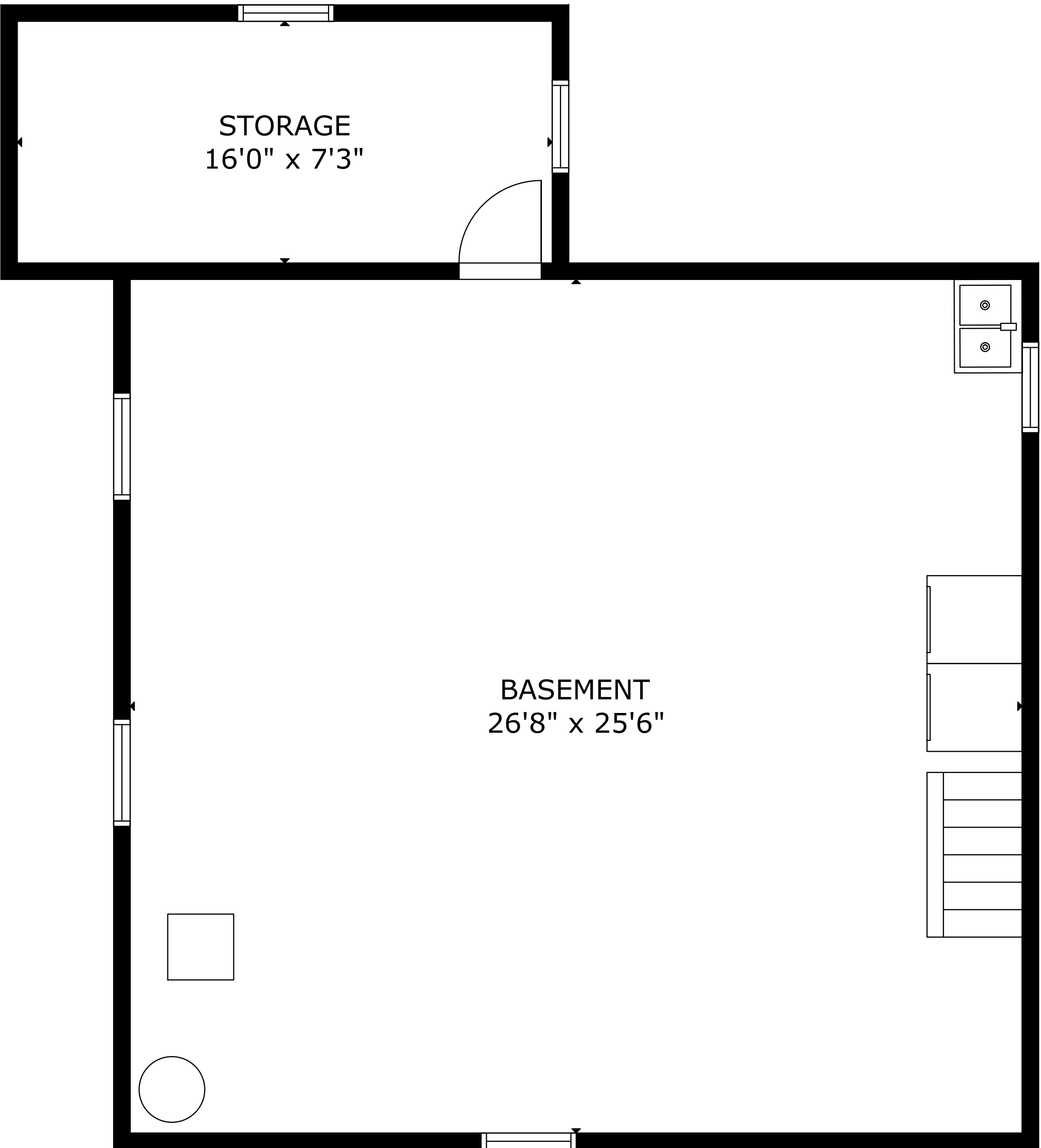


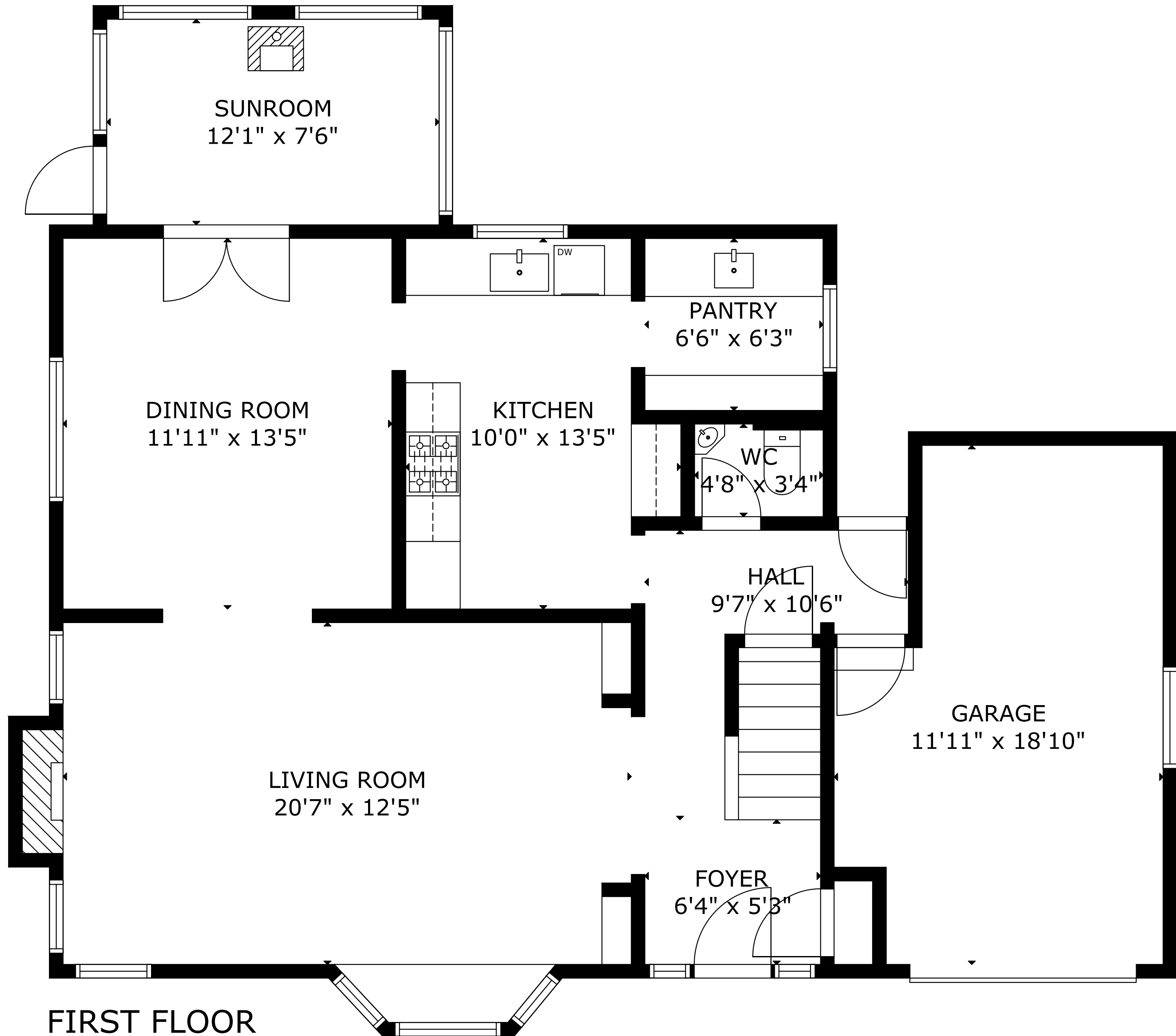
15 Poe Ave, , Bloomfield, NJ, 07003, United States



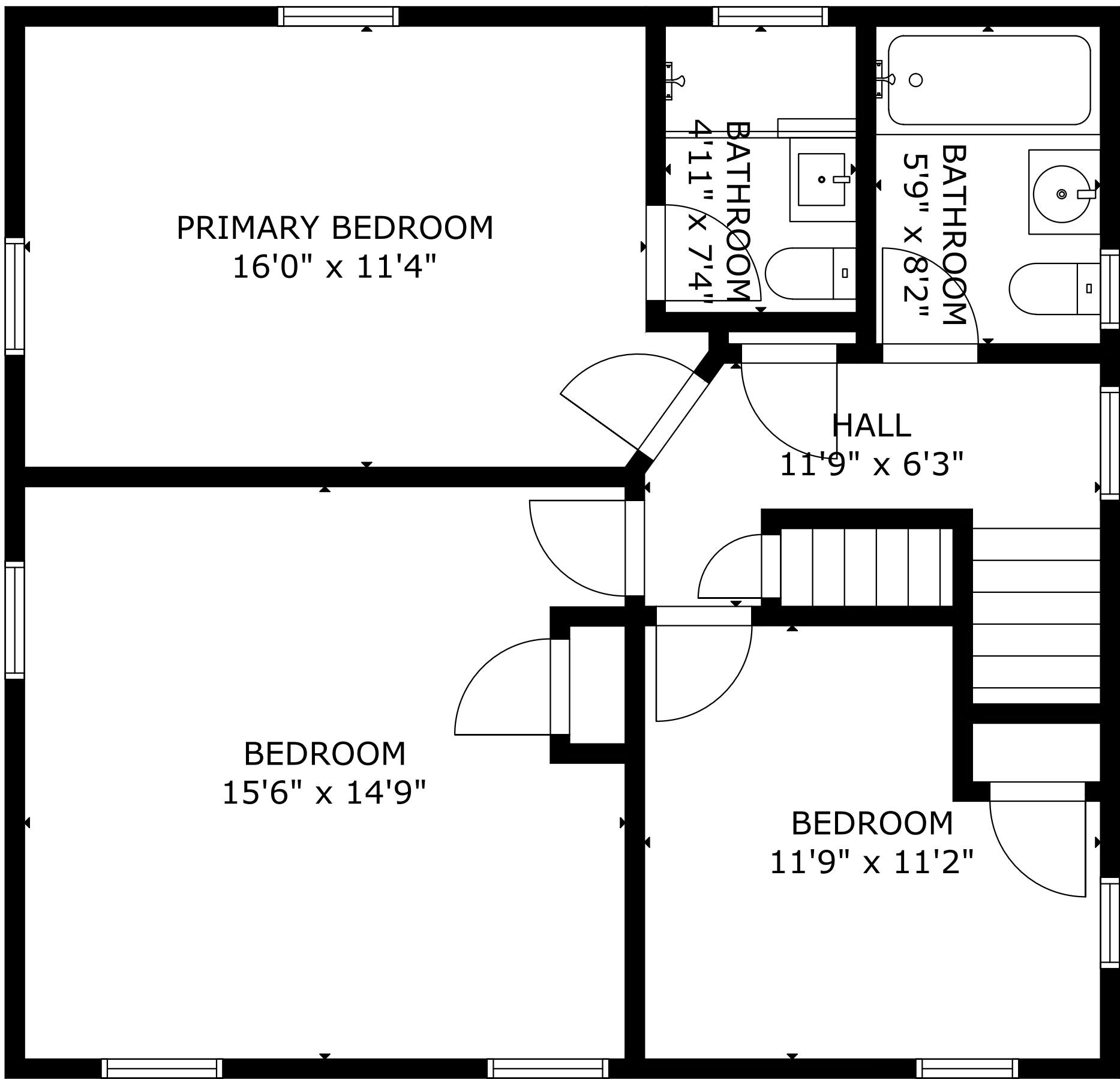
THIRD FLOOR



LOWER FLOOR



FIRST FLOOR



SECOND FLOOR

GROSS INTERNAL AREA
TOTAL: 2,749 sq.ft
LOWER FLOOR: 802 sq.ft, FIRST FLOOR: 859 sq.ft
SECOND FLOOR: 736 sq.ft, THIRD FLOOR: 352 sq.ft
EXCLUDED AREAS: GARAGE: 195 sq.ft
THIS FLOOR PLAN IS PROVIDED FOR ILLUSTRATION PURPOSES ONLY WITH THE PERMISSION OF THE SELLER. ROOM
POSITIONS AND DIMENSIONS ARE APPROXIMATE AND ARE NOT GUARANTEED TO BE EXACT OR TO SCALE. THE
BUYER SHOULD CONFIRM MEASUREMENTS FOR ACCURACY.