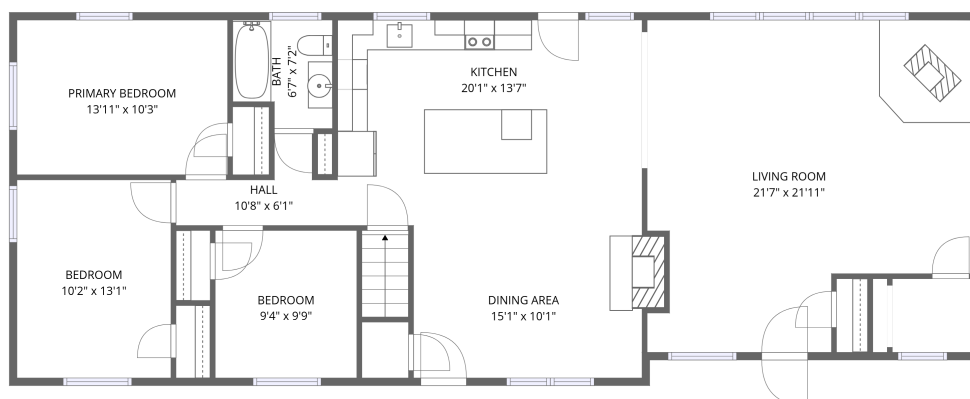
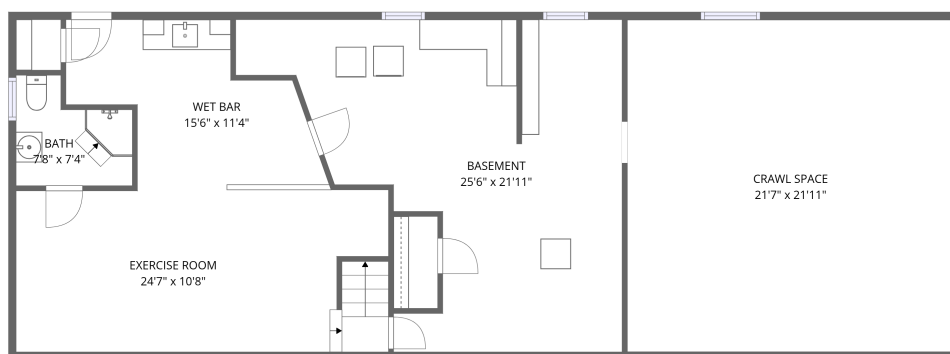


Home data report

**189 Orchard Street, Millis, Norfolk County, Massachusetts,
United States, 02054**



1st floor



Basement

Total Area: 1949 sq. ft

Basement: 493 sq. ft, 1st Floor: 1456 sq. ft

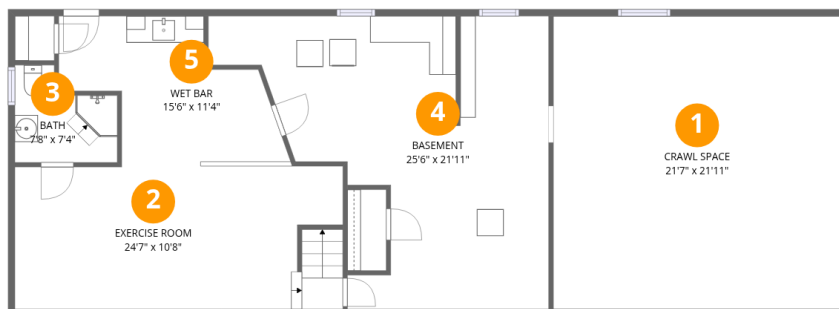
Excluded: Crawl space 481 sq. ft, Basement 385 sq. ft, Walls: 172 sq. ft

Property summary



Home data report

189 Orchard Street, Millis, Norfolk County, Massachusetts,
United States, 02054



Room dimensions

Floor 1 Below grade

Total:493sqft Excluded: 866sqft

#		Dimensions	sqft	Counted as living area
1	Crawl Space	21'7" x 21'11"	472 sq. ft	No
2	Exercise Room	24'7" x 10'8"	262 sq. ft	Yes
3	Bath	7'8" x 7'4"	56 sq. ft	Yes
4	Basement	25'6" x 21'11"	560 sq. ft	No
5	Wet Bar	15'6" x 11'4"	175 sq. ft	Yes

Home data report

189 Orchard Street, Millis, Norfolk County, Massachusetts,
United States, 02054



Room dimensions

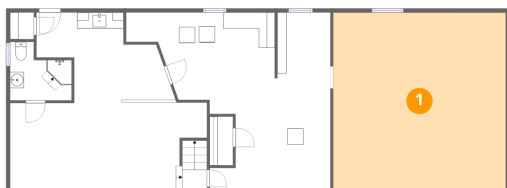
Floor 2

Total:1456sqft Excluded: 0sqft

#		Dimensions	sqft	Counted as living area
6	Kitchen	20'1" x 13'7"	273 sq. ft	Yes
7	Bedroom	9'4" x 9'9"	91 sq. ft	Yes
8	Primary Bedroom	13'11" x 10'3"	142 sq. ft	Yes
9	Hall	10'8" x 6'1"	65 sq. ft	Yes
10	Dining Area	15'1" x 10'1"	151 sq. ft	Yes
11	Bedroom	10'2" x 13'1"	133 sq. ft	Yes
12	Living Room	21'7" x 21'11"	473 sq. ft	Yes
13	Bath	6'7" x 7'2"	47 sq. ft	Yes

189 Orchard Street, Millis, Norfolk County, Massachusetts,
United States, 02054

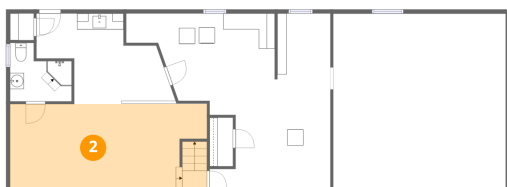
1 Floor 1 - Crawl Space



Dimensions: 21'7" x 21'11"
Area: 472 sq. ft
Counted as living area: No

Heated: No
Finished: No
Enclosed: No
Contiguous: Yes
Permitted: No
Wet space: No
Addition: No
Conversion: No

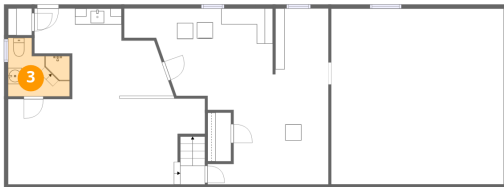
2 Floor 1 - Exercise Room



Dimensions: 24'7" x 10'8"
Area: 262 sq. ft
Counted as living area: Yes

Heated: Yes
Finished: Yes
Enclosed: Yes
Contiguous: Yes
Permitted: Yes
Wet space: No
Addition: No
Conversion: No

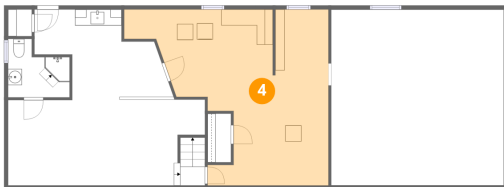
3 Floor 1 - Bath



Dimensions: 7'8" x 7'4"
Area: 56 sq. ft
Counted as living area: Yes

Heated: Yes
Finished: Yes
Enclosed: Yes
Contiguous: Yes
Permitted: Yes
Wet space: Yes
Addition: No
Conversion: No

4 Floor 1 - Basement



Dimensions: 25'6" x 21'11"
Area: 560 sq. ft
Counted as living area: No

Heated: Yes
Finished: No
Enclosed: Yes
Contiguous: Yes
Permitted: Yes
Wet space: No
Addition: No
Conversion: No

5 Floor 1 - Wet Bar



Dimensions: 15'6" x 11'4"
Area: 175 sq. ft
Counted as living area: Yes

Heated: Yes
Finished: Yes
Enclosed: Yes
Contiguous: Yes
Permitted: Yes
Wet space: No
Addition: No
Conversion: No

6 Floor 2 - Kitchen



Dimensions: 20'1" x 13'7"
Area: 273 sq. ft
Counted as living area: Yes

Heated: Yes
Finished: Yes
Enclosed: Yes
Contiguous: Yes
Permitted: Yes
Wet space: No
Addition: No
Conversion: No

7 Floor 2 - Bedroom



Dimensions: 9'4" x 9'9"
Area: 91 sq. ft
Counted as living area: Yes

Heated: Yes
Finished: Yes
Enclosed: Yes
Contiguous: Yes
Permitted: Yes
Wet space: No
Addition: No
Conversion: No

8 Floor 2 - Primary Bedroom



Dimensions: 13'11" x 10'3"
Area: 142 sq. ft
Counted as living area: Yes

Heated: Yes
Finished: Yes
Enclosed: Yes
Contiguous: Yes
Permitted: Yes
Wet space: No
Addition: No
Conversion: No

9 Floor 2 - Hall



Dimensions: 10'8" x 6'1"
Area: 65 sq. ft
Counted as living area: Yes

Heated: Yes
Finished: Yes
Enclosed: Yes
Contiguous: Yes
Permitted: Yes
Wet space: No
Addition: No
Conversion: No

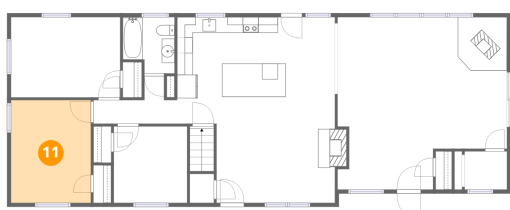
10 Floor 2 - Dining Area



Dimensions: 15'1" x 10'1"
Area: 151 sq. ft
Counted as living area: Yes

Heated: Yes
Finished: Yes
Enclosed: Yes
Contiguous: Yes
Permitted: Yes
Wet space: No
Addition: No
Conversion: No

11 Floor 2 - Bedroom



Dimensions: 10'2" x 13'1"
Area: 133 sq. ft
Counted as living area: Yes

Heated: Yes
Finished: Yes
Enclosed: Yes
Contiguous: Yes
Permitted: Yes
Wet space: No
Addition: No
Conversion: No

12 Floor 2 - Living Room



Dimensions: 21'7" x 21'11"
Area: 473 sq. ft
Counted as living area: Yes

Heated: Yes
Finished: Yes
Enclosed: Yes
Contiguous: Yes
Permitted: Yes
Wet space: No
Addition: No
Conversion: No

13 Floor 2 - Bath



Dimensions: 6'7" x 7'2"
Area: 47 sq. ft
Counted as living area: Yes

Heated: Yes
Finished: Yes
Enclosed: Yes
Contiguous: Yes
Permitted: Yes
Wet space: Yes
Addition: No
Conversion: No