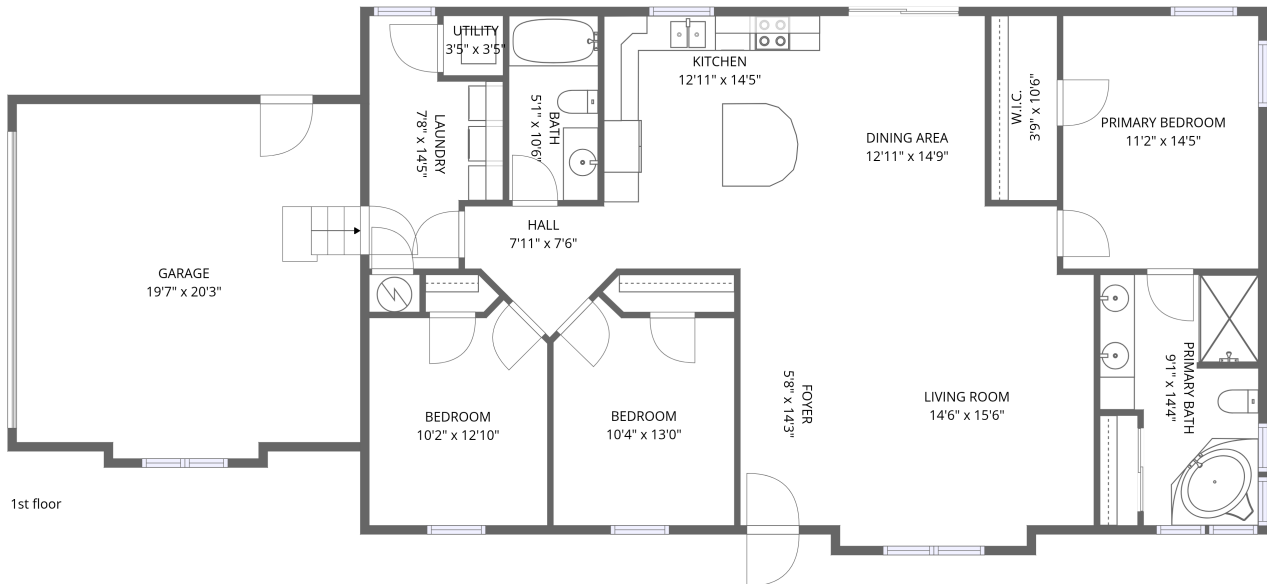


Home data report

937 E Hendricks St, Greensburg, IN, US



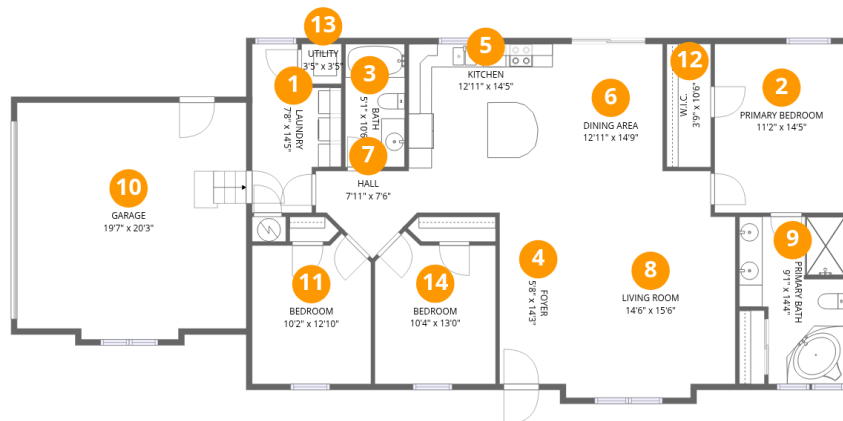
**Total Area: 1875 sq. ft**

1st Floor: 1875 sq. ft

Excluded: Walls: 111 sq. ft

## Property summary





## Room dimensions

Floor 1

Total: 1875 sqft Excluded: 0 sqft

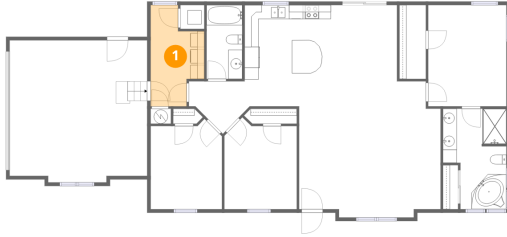
#		Dimensions	sqft	Counted as living area
1	Laundry	7'8" x 14'5"	110 sq. ft	Yes
2	Primary Bedroom	11'2" x 14'5"	161 sq. ft	Yes
3	Bath	5'1" x 10'6"	53 sq. ft	Yes
4	Foyer	5'8" x 14'3"	81 sq. ft	Yes
5	Kitchen	12'11" x 14'5"	186 sq. ft	Yes
6	Dining Area	12'11" x 14'9"	191 sq. ft	Yes
7	Hall	7'11" x 7'6"	59 sq. ft	Yes
8	Living Room	14'6" x 15'6"	224 sq. ft	Yes
9	Primary Bath	9'1" x 14'4"	129 sq. ft	Yes
10	Garage	19'7" x 20'3"	397 sq. ft	Yes
11	Bedroom	10'2" x 12'10"	131 sq. ft	Yes

Home data report

937 E Hendricks St, Greensburg, IN, US

#		Dimensions	sqft	Counted as living area
12	W.I.C.	3'9" x 10'6"	40 sq. ft	Yes
13	Utility	3'5" x 3'5"	12 sq. ft	Yes
14	Bedroom	10'4" x 13'0"	135 sq. ft	Yes

## 1 Floor 1 - Laundry



Dimensions: 7'8" x 14'5"  
Area: 110 sq. ft  
Counted as living area: Yes

Heated: Yes  
Finished: Yes  
Enclosed: Yes  
Contiguous: Yes  
Permitted: Yes  
Wet space: No  
Addition: No  
Conversion: No

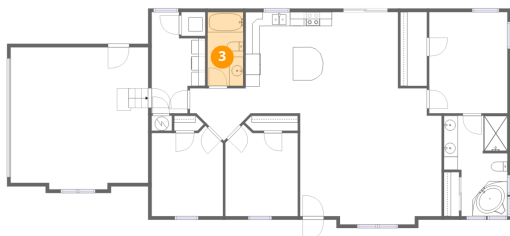
## 2 Floor 1 - Primary Bedroom



Dimensions: 11'2" x 14'5"  
Area: 161 sq. ft  
Counted as living area: Yes

Heated: Yes  
Finished: Yes  
Enclosed: Yes  
Contiguous: Yes  
Permitted: Yes  
Wet space: No  
Addition: No  
Conversion: No

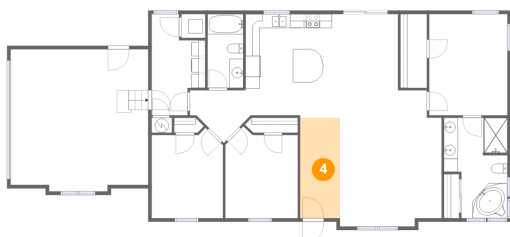
### 3 Floor 1 - Bath



Dimensions: 5'1" x 10'6"  
Area: 53 sq. ft  
Counted as living area: Yes

Heated: Yes  
Finished: Yes  
Enclosed: Yes  
Contiguous: Yes  
Permitted: Yes  
Wet space: Yes  
Addition: No  
Conversion: No

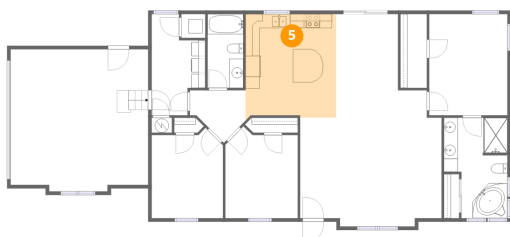
### 4 Floor 1 - Foyer



Dimensions: 5'8" x 14'3"  
Area: 81 sq. ft  
Counted as living area: Yes

Heated: Yes  
Finished: Yes  
Enclosed: Yes  
Contiguous: Yes  
Permitted: Yes  
Wet space: No  
Addition: No  
Conversion: No

### 5 Floor 1 - Kitchen



Dimensions: 12'11" x 14'5"  
Area: 186 sq. ft  
Counted as living area: Yes

Heated: Yes  
Finished: Yes  
Enclosed: Yes  
Contiguous: Yes  
Permitted: Yes  
Wet space: No  
Addition: No  
Conversion: No

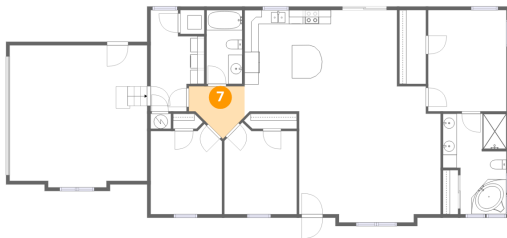
## 6 Floor 1 - Dining Area



Dimensions: 12'11" x 14'9"  
Area: 191 sq. ft  
Counted as living area: Yes

Heated: Yes  
Finished: Yes  
Enclosed: Yes  
Contiguous: Yes  
Permitted: Yes  
Wet space: No  
Addition: No  
Conversion: No

## 7 Floor 1 - Hall



Dimensions: 7'11" x 7'6"  
Area: 59 sq. ft  
Counted as living area: Yes

Heated: Yes  
Finished: Yes  
Enclosed: Yes  
Contiguous: Yes  
Permitted: Yes  
Wet space: No  
Addition: No  
Conversion: No

## 8 Floor 1 - Living Room



Dimensions: 14'6" x 15'6"  
Area: 224 sq. ft  
Counted as living area: Yes

Heated: Yes  
Finished: Yes  
Enclosed: Yes  
Contiguous: Yes  
Permitted: Yes  
Wet space: No  
Addition: No  
Conversion: No

### 9 Floor 1 - Primary Bath



Dimensions: 9'1" x 14'4"  
Area: 129 sq. ft  
Counted as living area: Yes

Heated: Yes  
Finished: Yes  
Enclosed: Yes  
Contiguous: Yes  
Permitted: Yes  
Wet space: Yes  
Addition: No  
Conversion: No

### 10 Floor 1 - Garage



Dimensions: 19'7" x 20'3"  
Area: 397 sq. ft  
Counted as living area: No

Heated: No  
Finished: Yes  
Enclosed: Yes  
Contiguous: Yes  
Permitted: Yes  
Wet space: No  
Addition: No  
Conversion: No

### 11 Floor 1 - Bedroom



Dimensions: 10'2" x 12'10"  
Area: 131 sq. ft  
Counted as living area: Yes

Heated: Yes  
Finished: Yes  
Enclosed: Yes  
Contiguous: Yes  
Permitted: Yes  
Wet space: No  
Addition: No  
Conversion: No

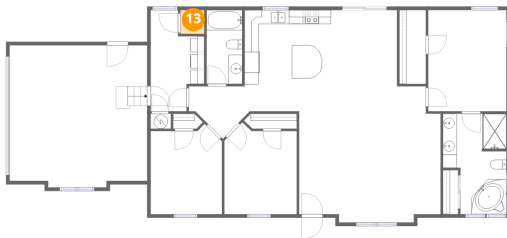
**12** Floor 1 - W.I.C.



Dimensions: 3'9" x 10'6"  
Area: 40 sq. ft  
Counted as living area: Yes

Heated: Yes  
Finished: Yes  
Enclosed: Yes  
Contiguous: Yes  
Permitted: Yes  
Wet space: No  
Addition: No  
Conversion: No

**13** Floor 1 - Utility



Dimensions: 3'5" x 3'5"  
Area: 12 sq. ft  
Counted as living area: Yes

Heated: Yes  
Finished: Yes  
Enclosed: Yes  
Contiguous: Yes  
Permitted: Yes  
Wet space: No  
Addition: No  
Conversion: No

**14** Floor 1 - Bedroom



Dimensions: 10'4" x 13'0"  
Area: 135 sq. ft  
Counted as living area: Yes

Heated: Yes  
Finished: Yes  
Enclosed: Yes  
Contiguous: Yes  
Permitted: Yes  
Wet space: No  
Addition: No  
Conversion: No