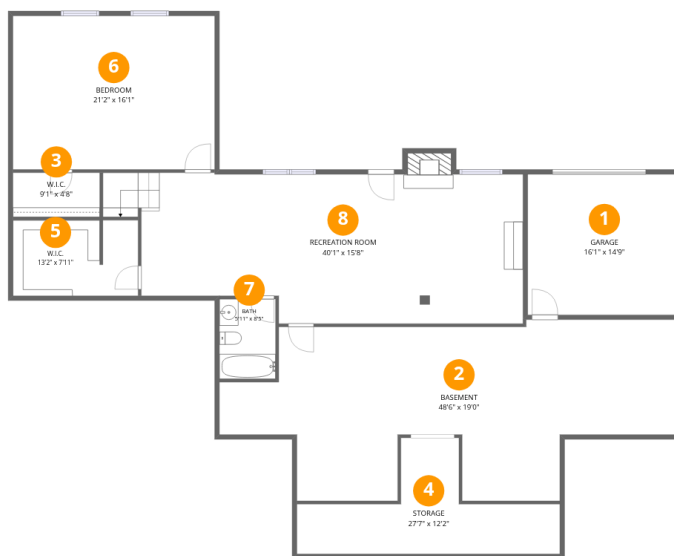


Home data report

478 Summit Drive, Rocky Mount, Franklin County, Virginia,
United States, 24151



Room dimensions

Floor 1 Below grade

Total:1178sqft

Excluded: 1122sqft

#		Dimensions	sqft	Counted as living area
1	Garage	16'1" x 14'9"	238 sq. ft	No
2	Basement	48'6" x 19'0"	670 sq. ft	No
3	W.I.C.	9'1" x 4'8"	42 sq. ft	Yes
4	Storage	27'7" x 12'2"	187 sq. ft	No
5	W.I.C.	13'2" x 7'11"	103 sq. ft	Yes
6	Bedroom	21'2" x 16'1"	342 sq. ft	Yes
7	Bath	5'11" x 8'5"	49 sq. ft	Yes
8	Recreation Room	40'1" x 15'8"	616 sq. ft	Yes

Home data report

478 Summit Drive, Rocky Mount, Franklin County, Virginia,
United States, 24151



Room dimensions

Floor 2

Total:2314sqft

Excluded: 853sqft

#		Dimensions	sqft	Counted as living area
9	W.I.C.	8'1" x 3'5"	28 sq. ft	Yes
10	Pantry	7'10" x 4'9"	37 sq. ft	Yes
11	W.I.C.	8'0" x 16'1"	113 sq. ft	Yes
12	Hall	7'8" x 3'3"	25 sq. ft	Yes
13	Breakfast Nook	14'10" x 8'6"	123 sq. ft	Yes
14	Kitchen	16'6" x 13'9"	224 sq. ft	Yes
15	Dining Area	9'7" x 11'10"	113 sq. ft	Yes
16	Living Room	15'1" x 22'5"	351 sq. ft	Yes
17	Office	10'1" x 11'6"	116 sq. ft	Yes
18	Garage	21'2" x 31'10"	630 sq. ft	No
19	Primary Bedroom	18'0" x 16'2"	245 sq. ft	Yes

Scan captured on Thu, 28 May 2026 14:12:10 GMT

SIZES AND DIMENSIONS ARE APPROXIMATE, ACTUAL MAY VARY.

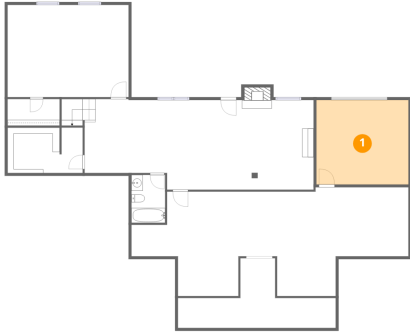
Home data report

**478 Summit Drive, Rocky Mount, Franklin County, Virginia,
United States, 24151**

#		Dimensions	sqft	Counted as living area
20	Hall	7'8" x 3'2"	24 sq. ft	Yes
21	W.I.C.	8'1" x 4'3"	34 sq. ft	Yes
22	Bath	5'1" x 5'5"	24 sq. ft	Yes
23	Bath	8'1" x 5'2"	42 sq. ft	Yes
24	Sun Room	14'11" x 11'7"	159 sq. ft	Yes
25	Bedroom	10'4" x 13'6"	139 sq. ft	Yes
26	Foyer	7'7" x 4'11"	37 sq. ft	Yes
27	Bath	7'4" x 5'1"	37 sq. ft	Yes
28	Bedroom	11'1" x 13'5"	149 sq. ft	Yes
29	Balcony	14'0" x 16'4"	222 sq. ft	No
30	Bath	9'1" x 10'8"	81 sq. ft	Yes
31	Laundry	7'11" x 5'3"	42 sq. ft	Yes

478 Summit Drive, Rocky Mount, Franklin County, Virginia,
United States, 24151

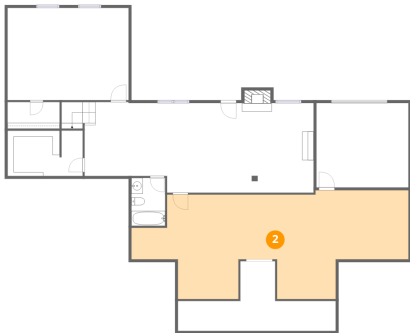
1 Floor 1 - Garage



Dimensions: 16'1" x 14'9"
Area: 238 sq. ft
Counted as living area: No

Heated: No
Finished: No
Enclosed: Yes
Contiguous: Yes
Permitted: Yes
Wet space: No
Addition: No
Conversion: No

2 Floor 1 - Basement



Dimensions: 48'6" x 19'0"
Area: 670 sq. ft
Counted as living area: No

Heated: Yes
Finished: No
Enclosed: Yes
Contiguous: Yes
Permitted: Yes
Wet space: No
Addition: No
Conversion: No

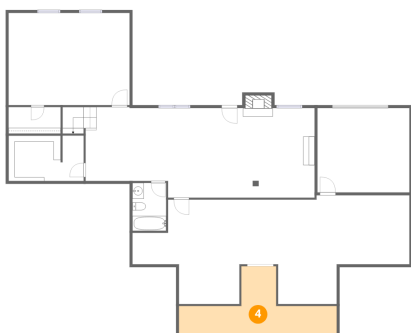
3 Floor 1 - W.I.C.



Dimensions: 9'1" x 4'8"
Area: 42 sq. ft
Counted as living area: Yes

Heated: Yes
Finished: Yes
Enclosed: Yes
Contiguous: Yes
Permitted: Yes
Wet space: No
Addition: No
Conversion: No

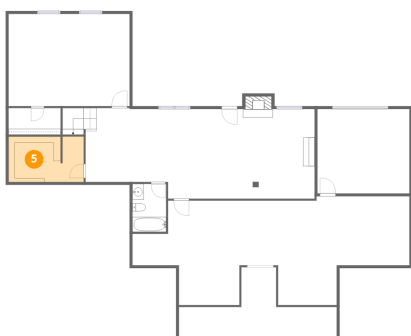
4 Floor 1 - Storage



Dimensions: 27'7" x 12'2"
Area: 187 sq. ft
Counted as living area: No

Heated: No
Finished: No
Enclosed: No
Contiguous: Yes
Permitted: Yes
Wet space: No
Addition: No
Conversion: No

5 Floor 1 - W.I.C.

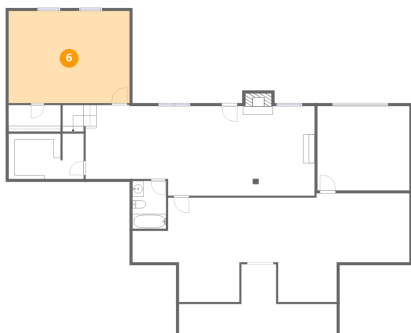


Dimensions: 13'2" x 7'11"
Area: 103 sq. ft
Counted as living area: Yes

Heated: Yes
Finished: Yes
Enclosed: Yes
Contiguous: Yes
Permitted: Yes
Wet space: No
Addition: No
Conversion: No

478 Summit Drive, Rocky Mount, Franklin County, Virginia,
United States, 24151

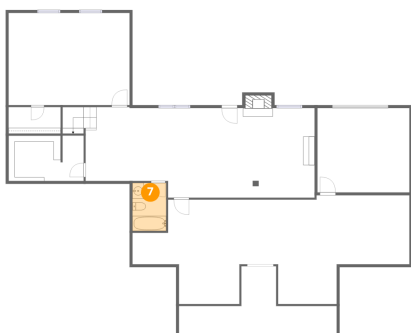
6 Floor 1 - Bedroom



Dimensions: 21'2" x 16'1"
Area: 342 sq. ft
Counted as living area: Yes

Heated: Yes
Finished: Yes
Enclosed: Yes
Contiguous: Yes
Permitted: Yes
Wet space: No
Addition: No
Conversion: No

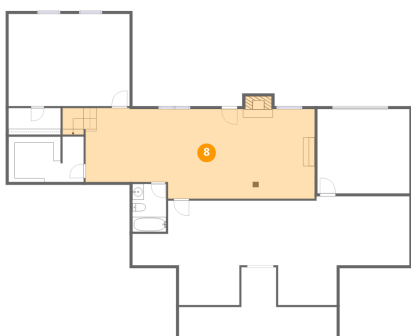
7 Floor 1 - Bath



Dimensions: 5'11" x 8'5"
Area: 49 sq. ft
Counted as living area: Yes

Heated: Yes
Finished: Yes
Enclosed: Yes
Contiguous: Yes
Permitted: Yes
Wet space: Yes
Addition: No
Conversion: No

8 Floor 1 - Recreation Room



Dimensions: 40'1" x 15'8"
Area: 616 sq. ft
Counted as living area: Yes

Heated: Yes
Finished: Yes
Enclosed: Yes
Contiguous: Yes
Permitted: Yes
Wet space: No
Addition: No
Conversion: No

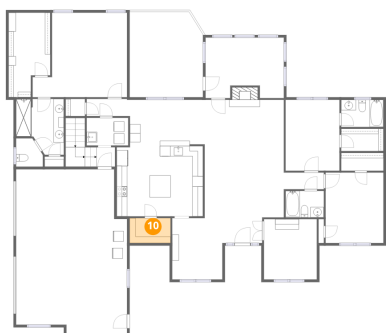
9 Floor 2 - W.I.C.



Dimensions: 8'1" x 3'5"
Area: 28 sq. ft
Counted as living area: Yes

Heated: Yes
Finished: Yes
Enclosed: Yes
Contiguous: Yes
Permitted: Yes
Wet space: No
Addition: No
Conversion: No

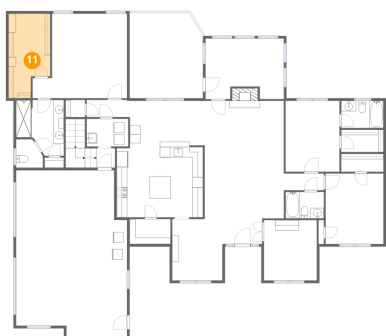
10 Floor 2 - Pantry



Dimensions: 7'10" x 4'9"
Area: 37 sq. ft
Counted as living area: Yes

Heated: Yes
Finished: Yes
Enclosed: Yes
Contiguous: Yes
Permitted: Yes
Wet space: No
Addition: No
Conversion: No

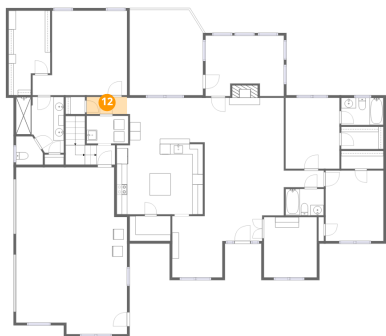
11 Floor 2 - W.I.C.



Dimensions: 8'0" x 16'1"
Area: 113 sq. ft
Counted as living area: Yes

Heated: Yes
Finished: Yes
Enclosed: Yes
Contiguous: Yes
Permitted: Yes
Wet space: No
Addition: No
Conversion: No

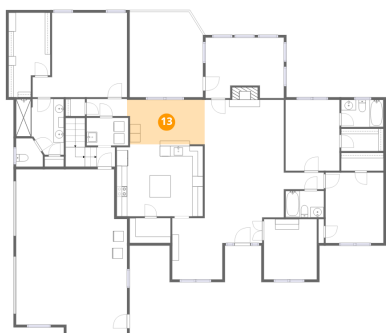
12 Floor 2 - Hall



Dimensions: 7'8" x 3'3"
Area: 25 sq. ft
Counted as living area: Yes

Heated: Yes
Finished: Yes
Enclosed: Yes
Contiguous: Yes
Permitted: Yes
Wet space: No
Addition: No
Conversion: No

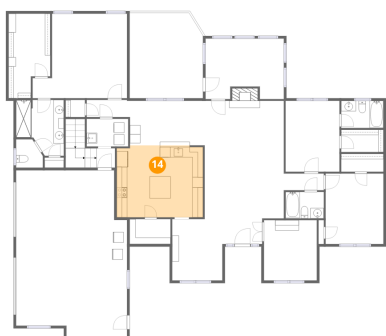
13 Floor 2 - Breakfast Nook



Dimensions: 14'10" x 8'6"
Area: 123 sq. ft
Counted as living area: Yes

Heated: Yes
Finished: Yes
Enclosed: Yes
Contiguous: Yes
Permitted: Yes
Wet space: No
Addition: No
Conversion: No

14 Floor 2 - Kitchen

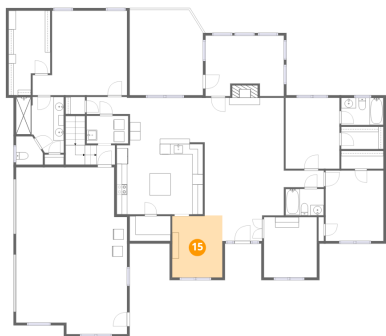


Dimensions: 16'6" x 13'9"
Area: 224 sq. ft
Counted as living area: Yes

Heated: Yes
Finished: Yes
Enclosed: Yes
Contiguous: Yes
Permitted: Yes
Wet space: No
Addition: No
Conversion: No

478 Summit Drive, Rocky Mount, Franklin County, Virginia,
United States, 24151

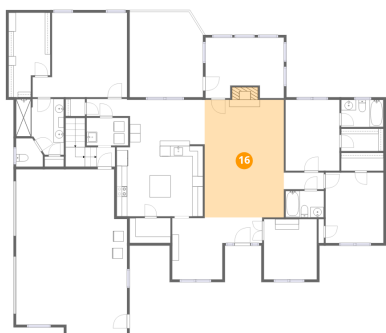
15 Floor 2 - Dining Area



Dimensions: 9'7" x 11'10"
Area: 113 sq. ft
Counted as living area: Yes

Heated: Yes
Finished: Yes
Enclosed: Yes
Contiguous: Yes
Permitted: Yes
Wet space: No
Addition: No
Conversion: No

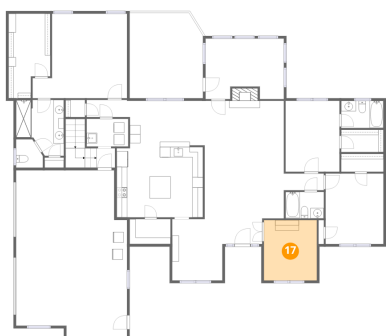
16 Floor 2 - Living Room



Dimensions: 15'1" x 22'5"
Area: 351 sq. ft
Counted as living area: Yes

Heated: Yes
Finished: Yes
Enclosed: Yes
Contiguous: Yes
Permitted: Yes
Wet space: No
Addition: No
Conversion: No

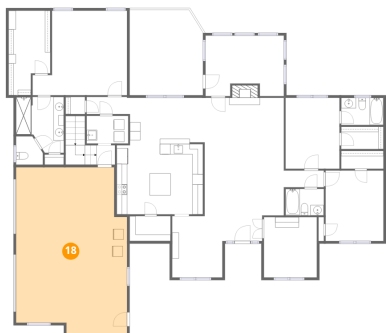
17 Floor 2 - Office



Dimensions: 10'1" x 11'6"
Area: 116 sq. ft
Counted as living area: Yes

Heated: Yes
Finished: Yes
Enclosed: Yes
Contiguous: Yes
Permitted: Yes
Wet space: No
Addition: No
Conversion: No

18 Floor 2 - Garage



Dimensions: 21'2" x 31'10"

Area: 630 sq. ft

Counted as living area: No

Heated: No

Finished: No

Enclosed: Yes

Contiguous: Yes

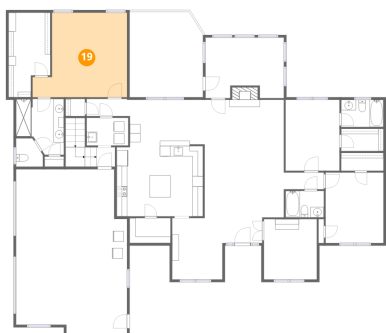
Permitted: Yes

Wet space: No

Addition: No

Conversion: No

19 Floor 2 - Primary Bedroom



Dimensions: 18'0" x 16'2"

Area: 245 sq. ft

Counted as living area: Yes

Heated: Yes

Finished: Yes

Enclosed: Yes

Contiguous: Yes

Permitted: Yes

Wet space: No

Addition: No

Conversion: No

20 Floor 2 - Hall



Dimensions: 7'8" x 3'2"

Area: 24 sq. ft

Counted as living area: Yes

Heated: Yes

Finished: Yes

Enclosed: Yes

Contiguous: Yes

Permitted: Yes

Wet space: No

Addition: No

Conversion: No

478 Summit Drive, Rocky Mount, Franklin County, Virginia,
United States, 24151

21 Floor 2 - W.I.C.



Dimensions: 8'1" x 4'3"
Area: 34 sq. ft
Counted as living area: Yes

Heated: Yes
Finished: Yes
Enclosed: Yes
Contiguous: Yes
Permitted: Yes
Wet space: No
Addition: No
Conversion: No

22 Floor 2 - Bath



Dimensions: 5'1" x 5'5"
Area: 24 sq. ft
Counted as living area: Yes

Heated: Yes
Finished: Yes
Enclosed: Yes
Contiguous: Yes
Permitted: Yes
Wet space: Yes
Addition: No
Conversion: No

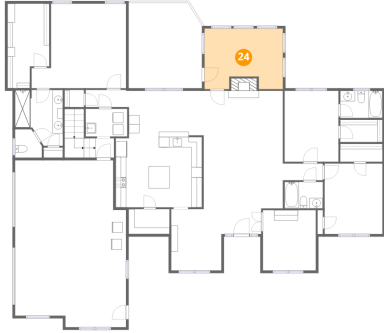
23 Floor 2 - Bath



Dimensions: 8'1" x 5'2"
Area: 42 sq. ft
Counted as living area: Yes

Heated: Yes
Finished: Yes
Enclosed: Yes
Contiguous: Yes
Permitted: Yes
Wet space: Yes
Addition: No
Conversion: No

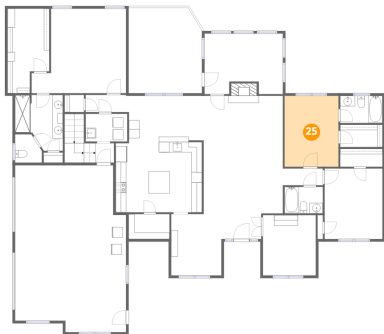
24 Floor 2 - Sun Room



Dimensions: 14'11" x 11'7"
Area: 159 sq. ft
Counted as living area: Yes

Heated: Yes
Finished: Yes
Enclosed: Yes
Contiguous: Yes
Permitted: Yes
Wet space: No
Addition: No
Conversion: No

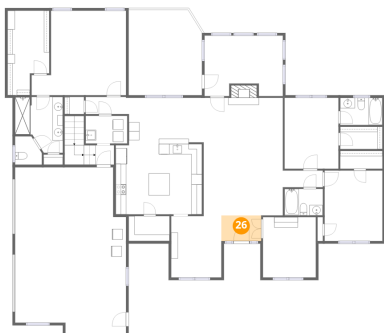
25 Floor 2 - Bedroom



Dimensions: 10'4" x 13'6"
Area: 139 sq. ft
Counted as living area: Yes

Heated: Yes
Finished: Yes
Enclosed: Yes
Contiguous: Yes
Permitted: Yes
Wet space: No
Addition: No
Conversion: No

26 Floor 2 - Foyer



Dimensions: 7'7" x 4'11"
Area: 37 sq. ft
Counted as living area: Yes

Heated: Yes
Finished: Yes
Enclosed: Yes
Contiguous: Yes
Permitted: Yes
Wet space: No
Addition: No
Conversion: No

27 Floor 2 - Bath



Dimensions: 7'4" x 5'1"
Area: 37 sq. ft
Counted as living area: Yes

Heated: Yes
Finished: Yes
Enclosed: Yes
Contiguous: Yes
Permitted: Yes
Wet space: Yes
Addition: No
Conversion: No

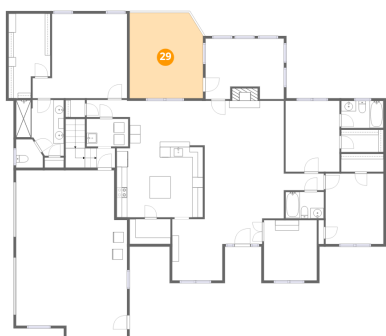
28 Floor 2 - Bedroom



Dimensions: 11'1" x 13'5"
Area: 149 sq. ft
Counted as living area: Yes

Heated: Yes
Finished: Yes
Enclosed: Yes
Contiguous: Yes
Permitted: Yes
Wet space: No
Addition: No
Conversion: No

29 Floor 2 - Balcony



Dimensions: 14'0" x 16'4"
Area: 222 sq. ft
Counted as living area: No

Heated: No
Finished: No
Enclosed: No
Contiguous: Yes
Permitted: Yes
Wet space: No
Addition: No
Conversion: No

478 Summit Drive, Rocky Mount, Franklin County, Virginia,
United States, 24151

30 Floor 2 - Bath



Dimensions: 9'1" x 10'8"
Area: 81 sq. ft
Counted as living area: Yes

Heated: Yes
Finished: Yes
Enclosed: Yes
Contiguous: Yes
Permitted: Yes
Wet space: Yes
Addition: No
Conversion: No

31 Floor 2 - Laundry



Dimensions: 7'11" x 5'3"
Area: 42 sq. ft
Counted as living area: Yes

Heated: Yes
Finished: Yes
Enclosed: Yes
Contiguous: Yes
Permitted: Yes
Wet space: No
Addition: No
Conversion: No