

Home report

17559 Johns Creek Road, New Castle, Craig County, Virginia,
United States, 24127



Total Area: 2756 sq. ft

Floor 1: 1595 sq. ft, Floor 2: 1161 sq. ft

Excluded: Utility 114 sq. ft, Storage 78 sq. ft, Porch 253 sq. ft, Patio 357 sq. ft, Undefined 26 sq. ft, Embedded window 17 sq. ft, Fireplace 69 sq. ft, Balcony 254 sq. ft, Walls: 182 sq. ft

Property summary

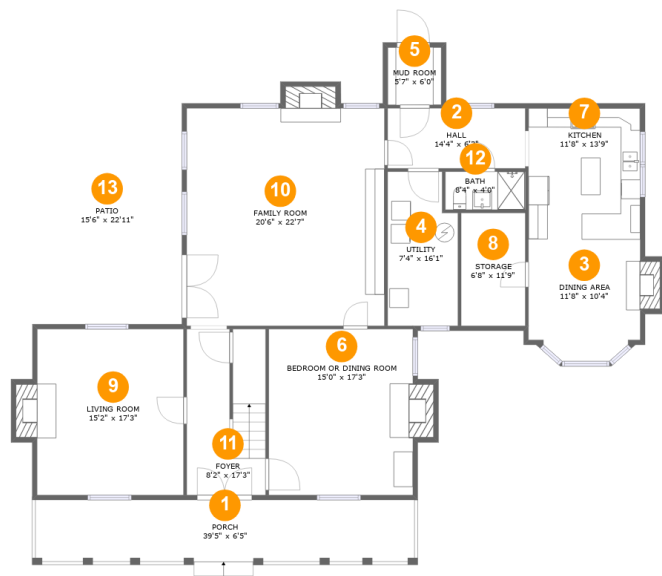
 **2** Floors

 **4** Bedrooms

 **3** Bathrooms

Home report

17559 Johns Creek Road, New Castle, Craig County, Virginia,
United States, 24127



Room dimensions

Floor 1 Total:1595sqft Excluded: 900sqft

#		Max Dimensions	sqft	Included
1	Porch	39'5" x 6'5"	253 sq. ft	No
2	Hall	14'4" x 6'3"	90 sq. ft	Yes
3	Dining Area	11'8" x 10'4"	130 sq. ft	Yes
4	Utility	7'4" x 16'1"	110 sq. ft	No
5	Mud Room	5'7" x 6'0"	34 sq. ft	Yes
6	Bedroom Or Dining Room	15'0" x 17'3"	271 sq. ft	Yes
7	Kitchen	11'8" x 13'9"	160 sq. ft	Yes
8	Storage	6'8" x 11'9"	78 sq. ft	No
9	Living Room	15'2" x 17'3"	275 sq. ft	Yes
10	Family Room	20'6" x 22'7"	477 sq. ft	Yes
11	Foyer	8'2" x 17'3"	112 sq. ft	Yes

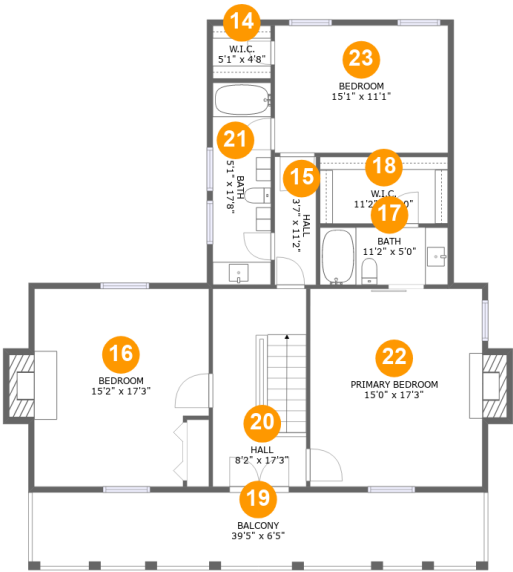
Home report

17559 Johns Creek Road, New Castle, Craig County, Virginia,
United States, 24127

#		Max Dimensions	sqft	Included
12	Bath	8'4" x 4'0"	33 sq. ft	Yes
13	Patio	15'6" x 22'11"	357 sq. ft	No

Home report

17559 Johns Creek Road, New Castle, Craig County, Virginia,
United States, 24127



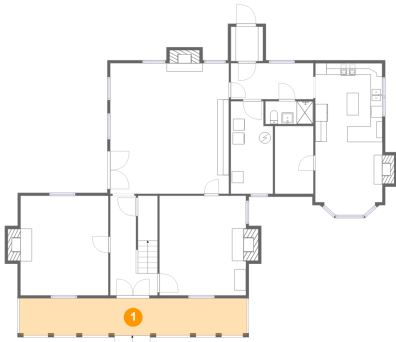
Room dimensions

Floor 2 Total:1161sqft Excluded: 268sqft

#		Max Dimensions	sqft	Included
14	W.I.C.	5'1" x 4'8"	24 sq. ft	Yes
15	Hall	3'7" x 11'2"	40 sq. ft	Yes
16	Bedroom	15'2" x 17'3"	261 sq. ft	Yes
17	Bath	11'2" x 5'0"	56 sq. ft	Yes
18	W.I.C.	11'2" x 5'10"	65 sq. ft	Yes
19	Balcony	39'5" x 6'5"	254 sq. ft	No
20	Hall	8'2" x 17'3"	141 sq. ft	Yes
21	Bath	5'1" x 17'8"	90 sq. ft	Yes
22	Primary Bedroom	15'0" x 17'3"	271 sq. ft	Yes
23	Bedroom	15'1" x 11'1"	168 sq. ft	Yes

17559 Johns Creek Road, New Castle, Craig County, Virginia,
United States, 24127

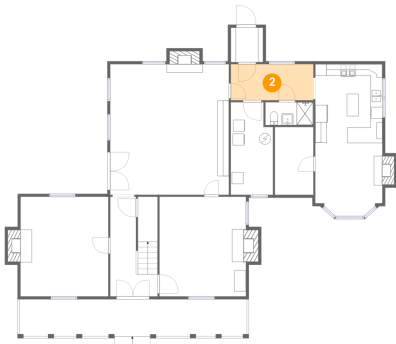
1 Floor 1 - Porch



Max Dimensions: 39'5" x 6'5"
Calculated Area: 253 sq. ft
Included: No

Heated: No
Finished: Yes
Enclosed: No
Contiguous: Yes
Permitted: Yes
Wet space: No
Addition: No
Conversion: No

2 Floor 1 - Hall

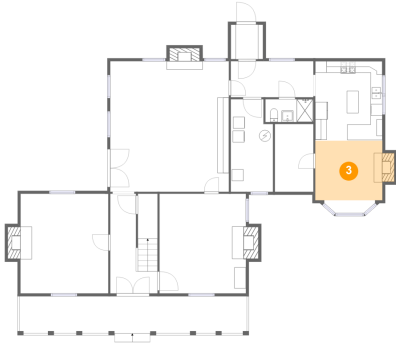


Max Dimensions: 14'4" x 6'3"
Calculated Area: 90 sq. ft
Included: Yes

Heated: Yes
Finished: Yes
Enclosed: Yes
Contiguous: Yes
Permitted: Yes
Wet space: No
Addition: No
Conversion: No

17559 Johns Creek Road, New Castle, Craig County, Virginia,
United States, 24127

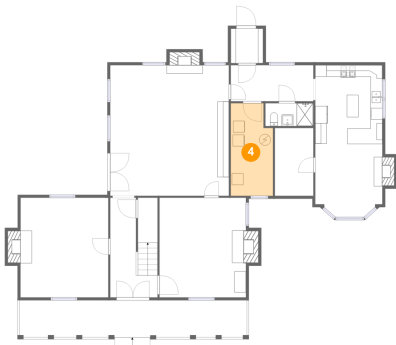
3 Floor 1 - Dining Area



Max Dimensions: 11'8" x 10'4"
Calculated Area: 130 sq. ft
Included: Yes

Heated: Yes
Finished: Yes
Enclosed: Yes
Contiguous: Yes
Permitted: Yes
Wet space: No
Addition: No
Conversion: No

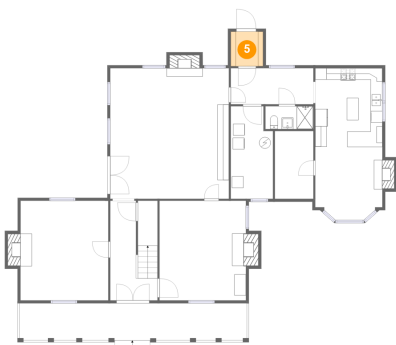
4 Floor 1 - Utility



Max Dimensions: 7'4" x 16'1"
Calculated Area: 110 sq. ft
Included: No

Heated: Yes
Finished: No
Enclosed: Yes
Contiguous: Yes
Permitted: Yes
Wet space: No
Addition: No
Conversion: No

5 Floor 1 - Mud Room

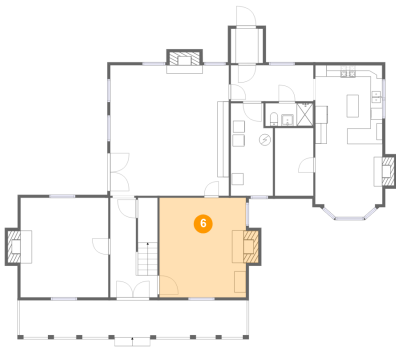


Max Dimensions: 5'7" x 6'0"
Calculated Area: 34 sq. ft
Included: Yes

Heated: Yes
Finished: Yes
Enclosed: Yes
Contiguous: Yes
Permitted: Yes
Wet space: No
Addition: No
Conversion: No

17559 Johns Creek Road, New Castle, Craig County, Virginia,
United States, 24127

6 Floor 1 - Bedroom Or Dining Room



Max Dimensions: 15'0" x 17'3"
Calculated Area: 271 sq. ft
Included: Yes

Heated: Yes
Finished: Yes
Enclosed: Yes
Contiguous: Yes
Permitted: Yes
Wet space: No
Addition: No
Conversion: No

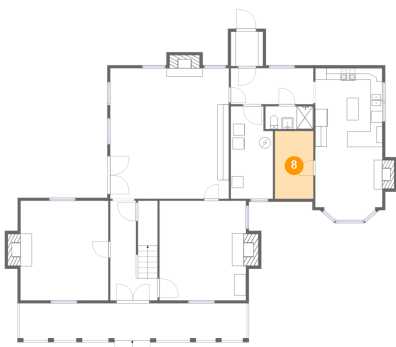
7 Floor 1 - Kitchen



Max Dimensions: 11'8" x 13'9"
Calculated Area: 160 sq. ft
Included: Yes

Heated: Yes
Finished: Yes
Enclosed: Yes
Contiguous: Yes
Permitted: Yes
Wet space: No
Addition: No
Conversion: No

8 Floor 1 - Storage



Max Dimensions: 6'8" x 11'9"
Calculated Area: 78 sq. ft
Included: No

Heated: No
Finished: No
Enclosed: No
Contiguous: No
Permitted: Yes
Wet space: No
Addition: No
Conversion: No

17559 Johns Creek Road, New Castle, Craig County, Virginia,
United States, 24127

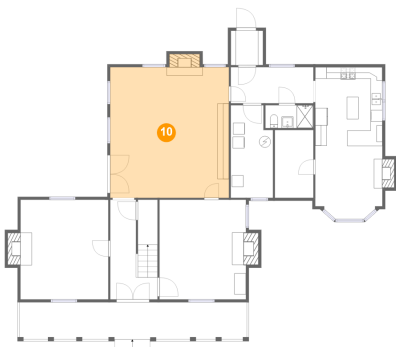
9 Floor 1 - Living Room



Max Dimensions: 15'2" x 17'3"
Calculated Area: 275 sq. ft
Included: Yes

Heated: Yes
Finished: Yes
Enclosed: Yes
Contiguous: Yes
Permitted: Yes
Wet space: No
Addition: No
Conversion: No

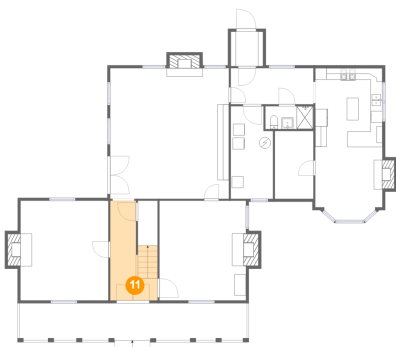
10 Floor 1 - Family Room



Max Dimensions: 20'6" x 22'7"
Calculated Area: 477 sq. ft
Included: Yes

Heated: Yes
Finished: Yes
Enclosed: Yes
Contiguous: Yes
Permitted: Yes
Wet space: No
Addition: No
Conversion: No

11 Floor 1 - Foyer



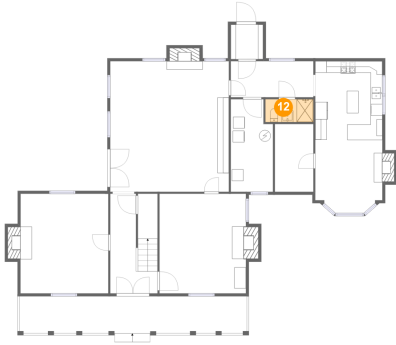
Max Dimensions: 8'2" x 17'3"
Calculated Area: 112 sq. ft
Included: Yes

Heated: Yes
Finished: Yes
Enclosed: Yes
Contiguous: Yes
Permitted: Yes
Wet space: No
Addition: No
Conversion: No

Home report

17559 Johns Creek Road, New Castle, Craig County, Virginia,
United States, 24127

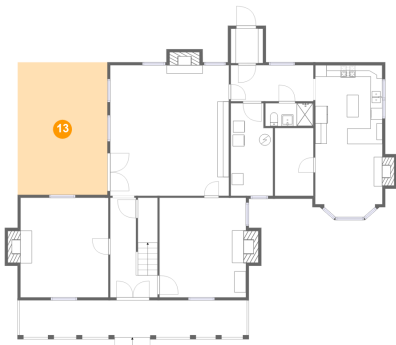
12 Floor 1 - Bath



Max Dimensions: 8'4" x 4'0"
Calculated Area: 33 sq. ft
Included: Yes

Heated: Yes
Finished: Yes
Enclosed: Yes
Contiguous: Yes
Permitted: Yes
Wet space: Yes
Addition: No
Conversion: No

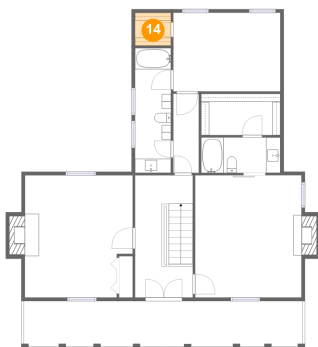
13 Floor 1 - Patio



Max Dimensions: 15'6" x
22'11"
Calculated Area: 357 sq. ft
Included: No

Heated: No
Finished: Yes
Enclosed: No
Contiguous:
Yes
Permitted: Yes
Wet space: No
Addition: No
Conversion: No

14 Floor 2 - W.I.C.



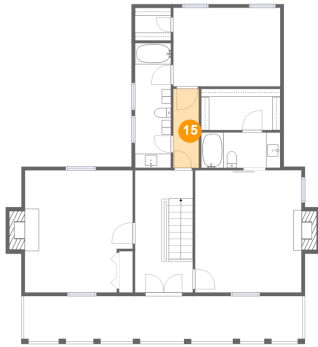
Max Dimensions: 5'1" x 4'8"
Calculated Area: 24 sq. ft
Included: Yes

Heated: Yes
Finished: Yes
Enclosed: Yes
Contiguous: Yes
Permitted: Yes
Wet space: No
Addition: No
Conversion: No

Home report

17559 Johns Creek Road, New Castle, Craig County, Virginia,
United States, 24127

15 Floor 2 - Hall



Max Dimensions: 3'7" x 11'2"
Calculated Area: 40 sq. ft
Included: Yes

Heated: Yes
Finished: Yes
Enclosed: Yes
Contiguous: Yes
Permitted: Yes
Wet space: No
Addition: No
Conversion: No

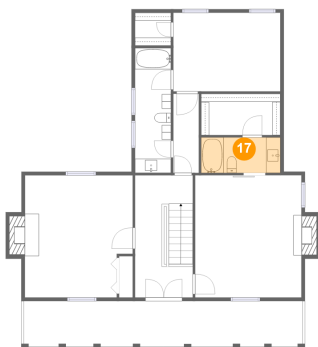
16 Floor 2 - Bedroom



Max Dimensions: 15'2" x 17'3"
Calculated Area: 261 sq. ft
Included: Yes

Heated: Yes
Finished: Yes
Enclosed: Yes
Contiguous: Yes
Permitted: Yes
Wet space: No
Addition: No
Conversion: No

17 Floor 2 - Bath



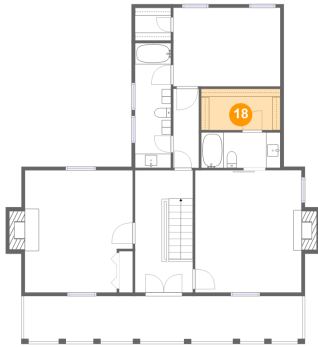
Max Dimensions: 11'2" x 5'0"
Calculated Area: 56 sq. ft
Included: Yes

Heated: Yes
Finished: Yes
Enclosed: Yes
Contiguous: Yes
Permitted: Yes
Wet space: Yes
Addition: No
Conversion: No

Home report

17559 Johns Creek Road, New Castle, Craig County, Virginia,
United States, 24127

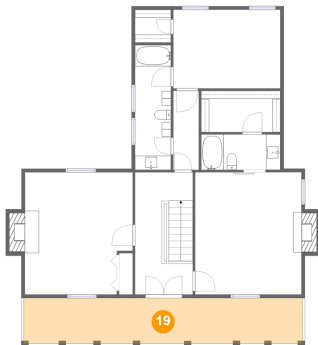
18 Floor 2 - W.I.C.



Max Dimensions: 11'2" x 5'10"
Calculated Area: 65 sq. ft
Included: Yes

Heated: Yes
Finished: Yes
Enclosed: Yes
Contiguous: Yes
Permitted: Yes
Wet space: No
Addition: No
Conversion: No

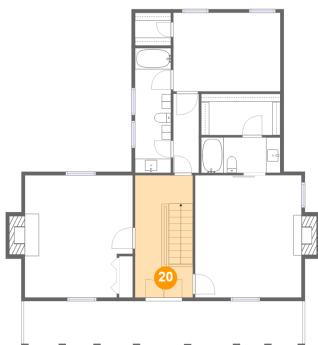
19 Floor 2 - Balcony



Max Dimensions: 39'5" x 6'5"
Calculated Area: 254 sq. ft
Included: No

Heated: No
Finished: Yes
Enclosed: No
Contiguous: Yes
Permitted: Yes
Wet space: No
Addition: No
Conversion: No

20 Floor 2 - Hall

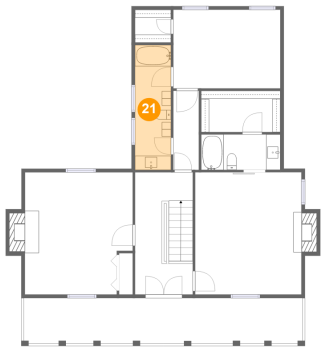


Max Dimensions: 8'2" x 17'3"
Calculated Area: 141 sq. ft
Included: Yes

Heated: Yes
Finished: Yes
Enclosed: Yes
Contiguous: Yes
Permitted: Yes
Wet space: No
Addition: No
Conversion: No

17559 Johns Creek Road, New Castle, Craig County, Virginia,
United States, 24127

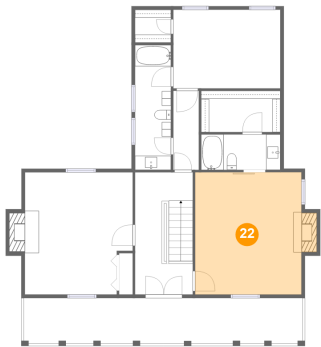
21 Floor 2 - Bath



Max Dimensions: 5'1" x 17'8"
Calculated Area: 90 sq. ft
Included: Yes

Heated: Yes
Finished: Yes
Enclosed: Yes
Contiguous: Yes
Permitted: Yes
Wet space: Yes
Addition: No
Conversion: No

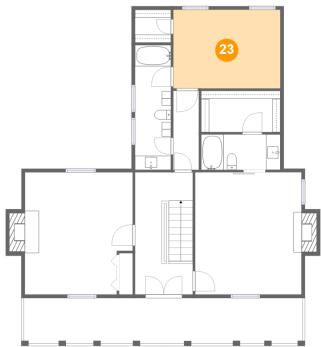
22 Floor 2 - Primary Bedroom



Max Dimensions: 15'0" x 17'3"
Calculated Area: 271 sq. ft
Included: Yes

Heated: Yes
Finished: Yes
Enclosed: Yes
Contiguous: Yes
Permitted: Yes
Wet space: No
Addition: No
Conversion: No

23 Floor 2 - Bedroom



Max Dimensions: 15'1" x 11'1"
Calculated Area: 168 sq. ft
Included: Yes

Heated: Yes
Finished: Yes
Enclosed: Yes
Contiguous: Yes
Permitted: Yes
Wet space: No
Addition: No
Conversion: No