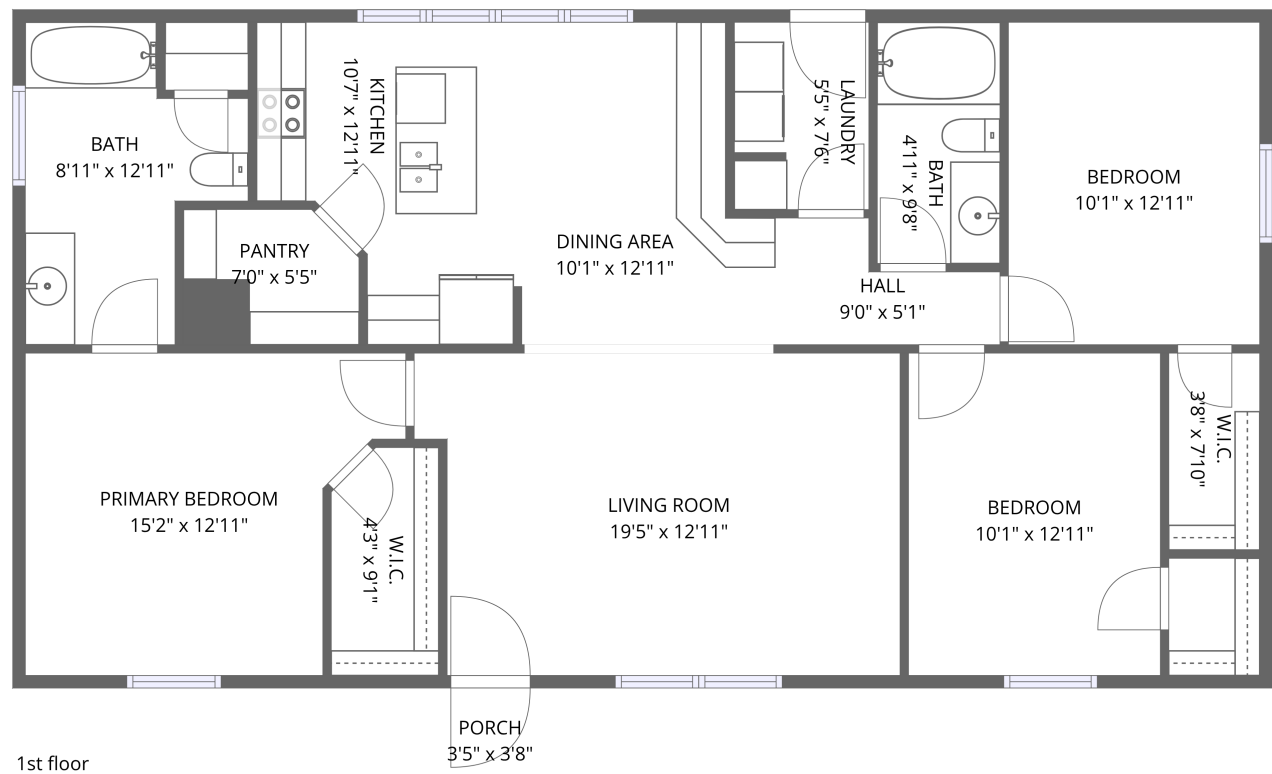


Home data report

2421 Jayme Street, Pahrump, Nye County, Nevada, United States, 89048



Total Area: 1288 sq. ft

1st Floor: 1288 sq. ft

Excluded: Porch 13 sq. ft, Walls: 76 sq. ft

Property summary

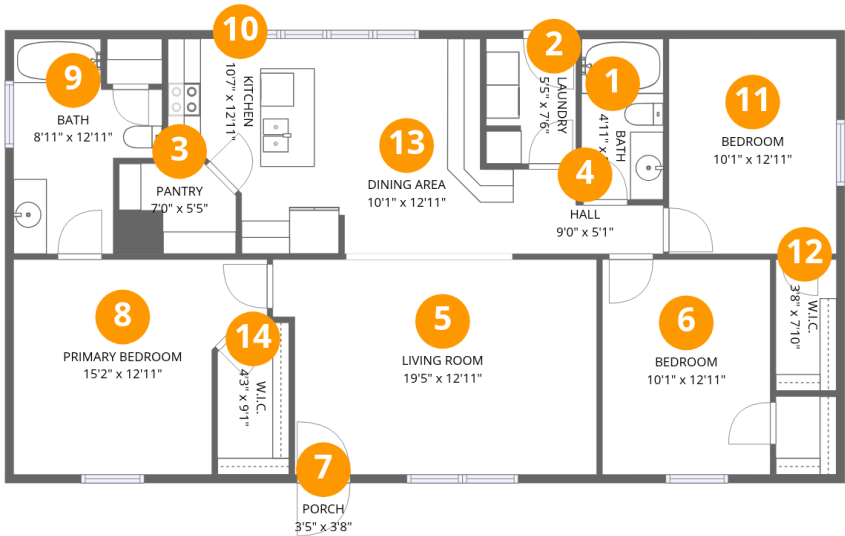
 **1** Floors

 **3** Bedrooms

 **2** Bathrooms

Home data report

2421 Jayme Street, Pahrump, Nye County, Nevada, United States, 89048



Room dimensions

Floor 1

Total:1288sqft Excluded: 13sqft

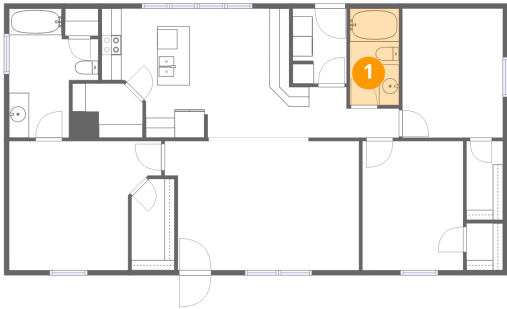
#		Dimensions	sqft	Counted as living area
1	Bath	4'11" x 9'8"	47 sq. ft	Yes
2	Laundry	5'5" x 7'6"	40 sq. ft	Yes
3	Pantry	7'0" x 5'5"	36 sq. ft	Yes
4	Hall	9'0" x 5'1"	34 sq. ft	Yes
5	Living Room	19'5" x 12'11"	238 sq. ft	Yes
6	Bedroom	10'1" x 12'11"	130 sq. ft	Yes
7	Porch	3'5" x 3'8"	13 sq. ft	No
8	Primary Bedroom	15'2" x 12'11"	167 sq. ft	Yes
9	Bath	8'11" x 12'11"	87 sq. ft	Yes
10	Kitchen	10'7" x 12'11"	113 sq. ft	Yes
11	Bedroom	10'1" x 12'11"	129 sq. ft	Yes

Home data report

2421 Jayme Street, Pahrump, Nye County, Nevada, United States, 89048

#		Dimensions	sqft	Counted as living area
12	W.I.C.	3'8" x 7'10"	29 sq. ft	Yes
13	Dining Area	10'1" x 12'11"	115 sq. ft	Yes
14	W.I.C.	4'3" x 9'1"	38 sq. ft	Yes

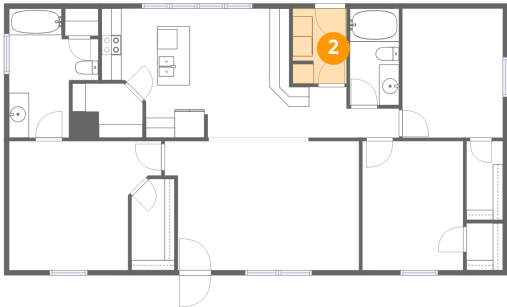
1 Floor 1 - Bath



Dimensions: 4'11" x 9'8"
Area: 47 sq. ft
Counted as living area: Yes

Heated: Yes
Finished: Yes
Enclosed: Yes
Contiguous: Yes
Permitted: Yes
Wet space: Yes
Addition: No
Conversion: No

2 Floor 1 - Laundry

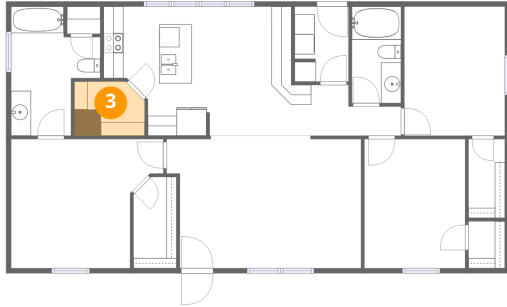


Dimensions: 5'5" x 7'6"
Area: 40 sq. ft
Counted as living area: Yes

Heated: Yes
Finished: Yes
Enclosed: Yes
Contiguous: Yes
Permitted: Yes
Wet space: No
Addition: No
Conversion: No

2421 Jayme Street, Pahrump, Nye County, Nevada, United States, 89048

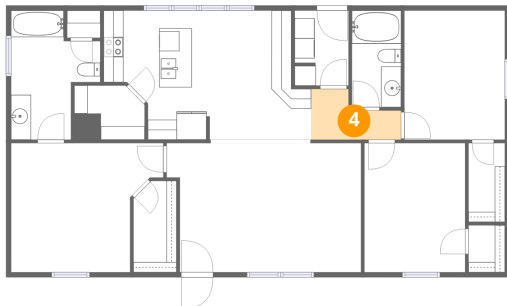
3 Floor 1 - Pantry



Dimensions: 7'0" x 5'5"
Area: 36 sq. ft
Counted as living area: Yes

Heated: Yes
Finished: Yes
Enclosed: Yes
Contiguous: Yes
Permitted: Yes
Wet space: No
Addition: No
Conversion: No

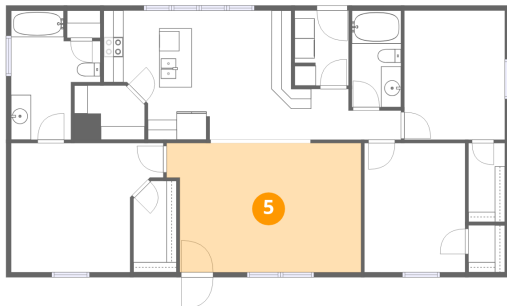
4 Floor 1 - Hall



Dimensions: 9'0" x 5'1"
Area: 34 sq. ft
Counted as living area: Yes

Heated: Yes
Finished: Yes
Enclosed: Yes
Contiguous: Yes
Permitted: Yes
Wet space: No
Addition: No
Conversion: No

5 Floor 1 - Living Room



Dimensions: 19'5" x 12'11"
Area: 238 sq. ft
Counted as living area: Yes

Heated: Yes
Finished: Yes
Enclosed: Yes
Contiguous: Yes
Permitted: Yes
Wet space: No
Addition: No
Conversion: No

2421 Jayme Street, Pahrump, Nye County, Nevada, United States, 89048

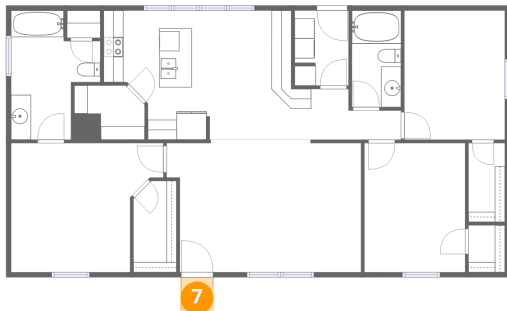
6 Floor 1 - Bedroom



Dimensions: 10'1" x 12'11"
Area: 130 sq. ft
Counted as living area: Yes

Heated: Yes
Finished: Yes
Enclosed: Yes
Contiguous: Yes
Permitted: Yes
Wet space: No
Addition: No
Conversion: No

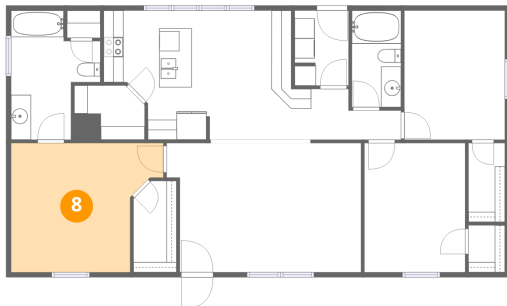
7 Floor 1 - Porch



Dimensions: 3'5" x 3'8"
Area: 13 sq. ft
Counted as living area: No

Heated: No
Finished: No
Enclosed: No
Contiguous: Yes
Permitted: Yes
Wet space: No
Addition: No
Conversion: No

8 Floor 1 - Primary Bedroom



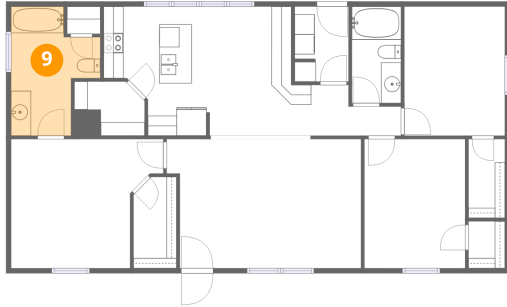
Dimensions: 15'2" x 12'11"
Area: 167 sq. ft
Counted as living area: Yes

Heated: Yes
Finished: Yes
Enclosed: Yes
Contiguous: Yes
Permitted: Yes
Wet space: No
Addition: No
Conversion: No

Home data report

2421 Jayme Street, Pahrump, Nye County, Nevada, United States, 89048

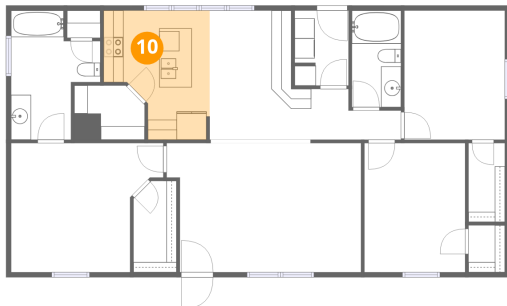
9 Floor 1 - Bath



Dimensions: 8'11" x 12'11"
Area: 87 sq. ft
Counted as living area: Yes

Heated: Yes
Finished: Yes
Enclosed: Yes
Contiguous: Yes
Permitted: Yes
Wet space: Yes
Addition: No
Conversion: No

10 Floor 1 - Kitchen



Dimensions: 10'7" x 12'11"
Area: 113 sq. ft
Counted as living area: Yes

Heated: Yes
Finished: Yes
Enclosed: Yes
Contiguous: Yes
Permitted: Yes
Wet space: No
Addition: No
Conversion: No

11 Floor 1 - Bedroom



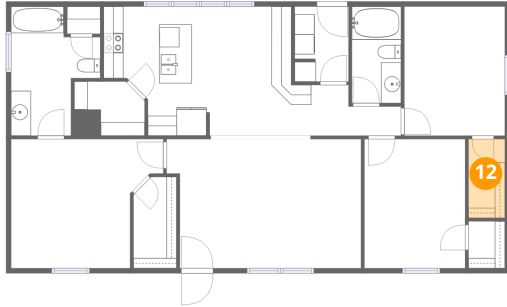
Dimensions: 10'1" x 12'11"
Area: 129 sq. ft
Counted as living area: Yes

Heated: Yes
Finished: Yes
Enclosed: Yes
Contiguous: Yes
Permitted: Yes
Wet space: No
Addition: No
Conversion: No

Home data report

2421 Jayme Street, Pahrump, Nye County, Nevada, United States, 89048

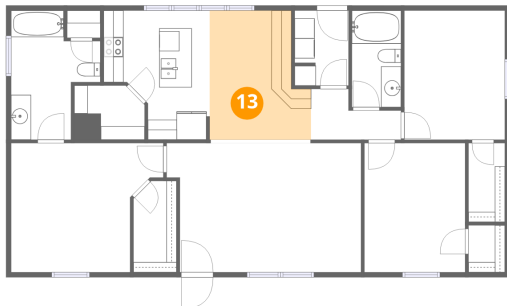
12 Floor 1 - W.I.C.



Dimensions: 3'8" x 7'10"
Area: 29 sq. ft
Counted as living area: Yes

Heated: Yes
Finished: Yes
Enclosed: Yes
Contiguous: Yes
Permitted: Yes
Wet space: No
Addition: No
Conversion: No

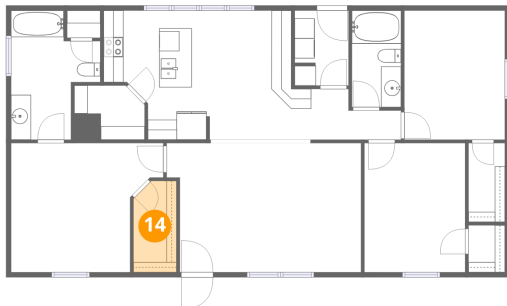
13 Floor 1 - Dining Area



Dimensions: 10'1" x 12'11"
Area: 115 sq. ft
Counted as living area: Yes

Heated: Yes
Finished: Yes
Enclosed: Yes
Contiguous: Yes
Permitted: Yes
Wet space: No
Addition: No
Conversion: No

14 Floor 1 - W.I.C.



Dimensions: 4'3" x 9'1"
Area: 38 sq. ft
Counted as living area: Yes

Heated: Yes
Finished: Yes
Enclosed: Yes
Contiguous: Yes
Permitted: Yes
Wet space: No
Addition: No
Conversion: No