

## Home data report

# 122 Lucy Long Ct, Stephens City, VA, US



**Total Area: 3504 sq. ft**

Basement 1: 897 sq. ft, 1st Floor: 1267 sq. ft, 2nd Floor: 1340 sq. ft

Excluded: Utility 24 sq. ft, Patio 421 sq. ft, Storage 315 sq. ft, Garage 477 sq. ft, Porch 181 sq. ft, Covered deck 153 sq. ft, Walls: 268 sq. ft

## Property summary

 **3** Floors

 **4** Bedrooms

 **2** Bathrooms

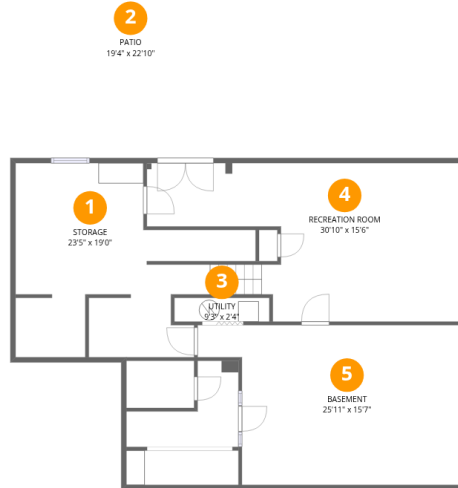
Home data report

# 122 Lucy Long Ct, Stephens City, VA, US

 **2**  
Half baths

 **1**  
Garages

# 122 Lucy Long Ct, Stephens City, VA, US



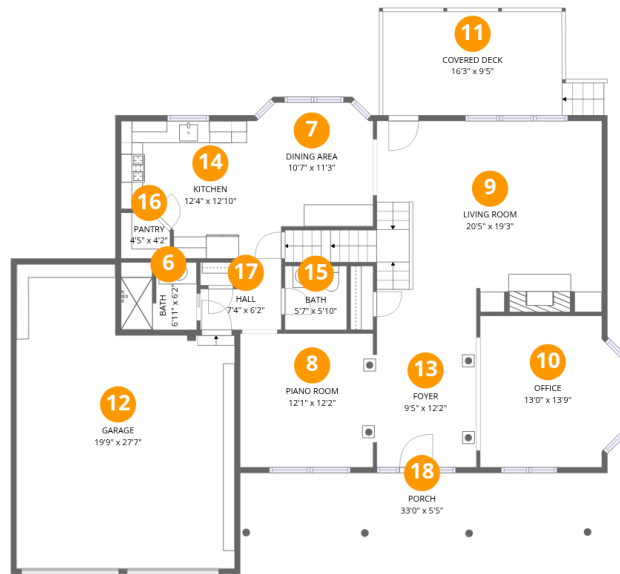
## Room dimensions

Floor 1 Below grade

Total:897sqft

Excluded: 760sqft

#		Dimensions	sqft	Counted as living area
1	Storage	23'5" x 19'0"	445 sq. ft	No
2	Patio	19'4" x 22'10"	440 sq. ft	No
3	Utility	9'3" x 2'4"	22 sq. ft	No
4	Recreation Room	30'10" x 15'6"	477 sq. ft	Yes
5	Basement	25'11" x 15'7"	404 sq. ft	Yes



## Room dimensions

Floor 2

Total: 1267 sqft

Excluded: 811 sqft

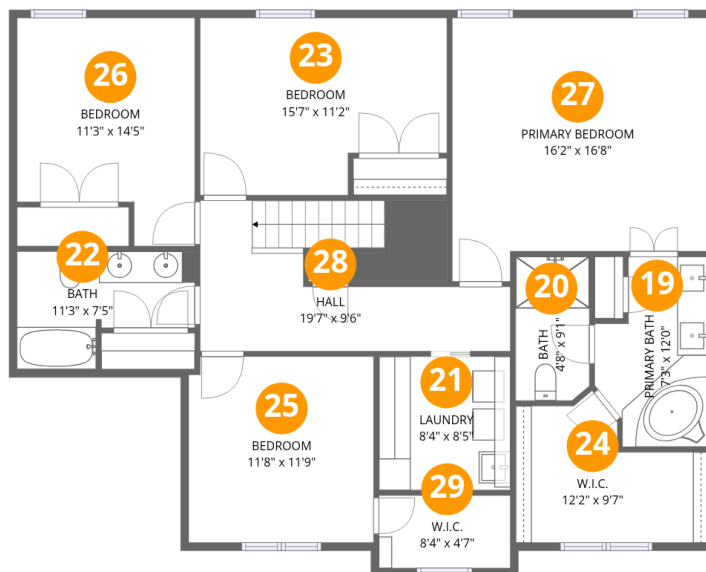
#		Dimensions	sqft	Counted as living area
6	Bath	6'11" x 6'2"	42 sq. ft	Yes
7	Dining Area	10'7" x 11'3"	119 sq. ft	Yes
8	Piano Room	12'1" x 12'2"	146 sq. ft	Yes
9	Living Room	20'5" x 19'3"	393 sq. ft	Yes
10	Office	13'0" x 13'9"	179 sq. ft	Yes
11	Covered Deck	16'3" x 9'5"	153 sq. ft	No
12	Garage	19'9" x 27'7"	546 sq. ft	No
13	Foyer	9'5" x 12'2"	114 sq. ft	Yes
14	Kitchen	12'4" x 12'10"	158 sq. ft	Yes
15	Bath	5'7" x 5'10"	33 sq. ft	Yes
16	Pantry	4'5" x 4'2"	19 sq. ft	Yes

Home data report

**122 Lucy Long Ct, Stephens City, VA, US**

#		Dimensions	sqft	Counted as living area
17	Hall	7'4" x 6'2"	45 sq. ft	Yes
18	Porch	33'0" x 5'5"	180 sq. ft	No

# 122 Lucy Long Ct, Stephens City, VA, US



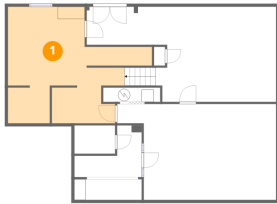
## Room dimensions

Floor 3

Total: 1340 sqft Excluded: 0 sqft

#		Dimensions	sqft	Counted as living area
19	Primary Bath	7'3" x 12'0"	86 sq. ft	Yes
20	Bath	4'8" x 9'1"	42 sq. ft	Yes
21	Laundry	8'4" x 8'5"	70 sq. ft	Yes
22	Bath	11'3" x 7'5"	83 sq. ft	Yes
23	Bedroom	15'7" x 11'2"	174 sq. ft	Yes
24	W.I.C.	12'2" x 9'7"	117 sq. ft	Yes
25	Bedroom	11'8" x 11'9"	137 sq. ft	Yes
26	Bedroom	11'3" x 14'5"	161 sq. ft	Yes
27	Primary Bedroom	16'2" x 16'8"	269 sq. ft	Yes
28	Hall	19'7" x 9'6"	186 sq. ft	Yes
29	W.I.C.	8'4" x 4'7"	38 sq. ft	Yes

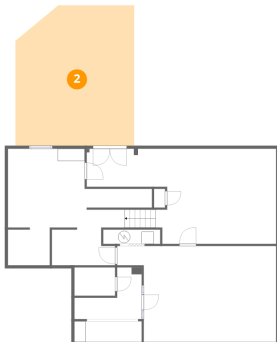
## 1 Floor 1 - Storage



Dimensions: 23'5" x 19'0"  
Area: 445 sq. ft  
Counted as living area: No

Heated: No  
Finished: No  
Enclosed: No  
Contiguous: Yes  
Permitted: Yes  
Wet space: No  
Addition: No  
Conversion: No

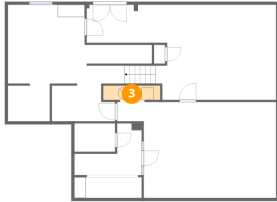
## 2 Floor 1 - Patio



Dimensions: 19'4" x 22'10"  
Area: 440 sq. ft  
Counted as living area: No

Heated: No  
Finished: No  
Enclosed: No  
Contiguous: Yes  
Permitted: Yes  
Wet space: No  
Addition: No  
Conversion: No

### 3 Floor 1 - Utility



Dimensions: 9'3" x 2'4"  
Area: 22 sq. ft  
Counted as living area: No

Heated: Yes  
Finished: No  
Enclosed: Yes  
Contiguous: Yes  
Permitted: Yes  
Wet space: No  
Addition: No  
Conversion: No

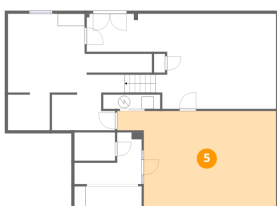
### 4 Floor 1 - Recreation Room



Dimensions: 30'10" x 15'6"  
Area: 477 sq. ft  
Counted as living area: Yes

Heated: Yes  
Finished: Yes  
Enclosed: Yes  
Contiguous: Yes  
Permitted: Yes  
Wet space: No  
Addition: No  
Conversion: No

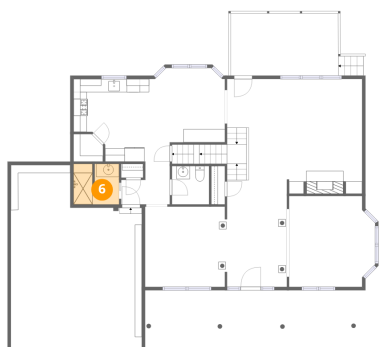
### 5 Floor 1 - Basement



Dimensions: 25'11" x 15'7"  
Area: 404 sq. ft  
Counted as living area: Yes

Heated: Yes  
Finished: Yes  
Enclosed: Yes  
Contiguous: Yes  
Permitted: Yes  
Wet space: No  
Addition: No  
Conversion: No

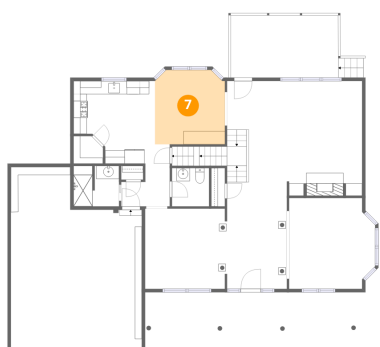
### 6 Floor 2 - Bath



Dimensions: 6'11" x 6'2"  
Area: 42 sq. ft  
Counted as living area: Yes

Heated: Yes  
Finished: Yes  
Enclosed: Yes  
Contiguous: Yes  
Permitted: Yes  
Wet space: Yes  
Addition: No  
Conversion: No

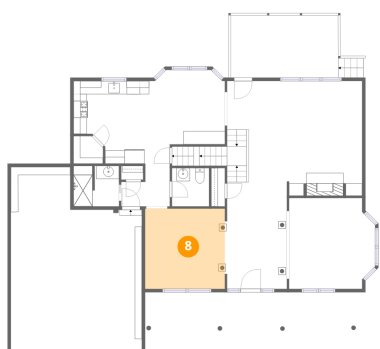
### 7 Floor 2 - Dining Area



Dimensions: 10'7" x 11'3"  
Area: 119 sq. ft  
Counted as living area: Yes

Heated: Yes  
Finished: Yes  
Enclosed: Yes  
Contiguous: Yes  
Permitted: Yes  
Wet space: No  
Addition: No  
Conversion: No

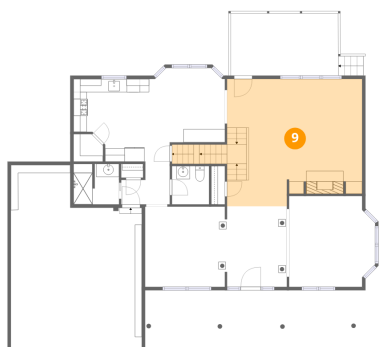
### 8 Floor 2 - Piano Room



Dimensions: 12'1" x 12'2"  
Area: 146 sq. ft  
Counted as living area: Yes

Heated: Yes  
Finished: Yes  
Enclosed: Yes  
Contiguous: Yes  
Permitted: Yes  
Wet space: No  
Addition: No  
Conversion: No

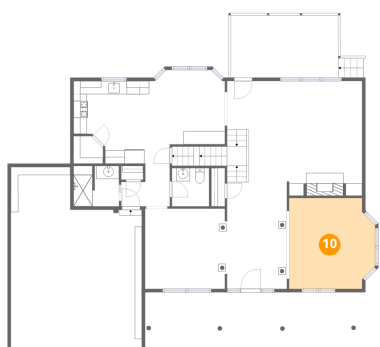
### 9 Floor 2 - Living Room



Dimensions: 20'5" x 19'3"  
Area: 393 sq. ft  
Counted as living area: Yes

Heated: Yes  
Finished: Yes  
Enclosed: Yes  
Contiguous: Yes  
Permitted: Yes  
Wet space: No  
Addition: No  
Conversion: No

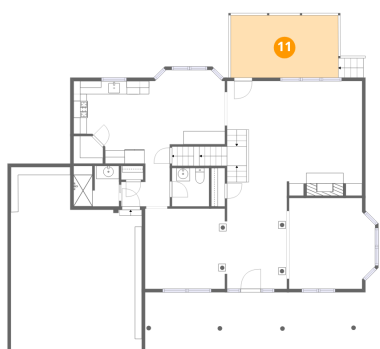
### 10 Floor 2 - Office



Dimensions: 13'0" x 13'9"  
Area: 179 sq. ft  
Counted as living area: Yes

Heated: Yes  
Finished: Yes  
Enclosed: Yes  
Contiguous: Yes  
Permitted: Yes  
Wet space: No  
Addition: No  
Conversion: No

### 11 Floor 2 - Covered Deck



Dimensions: 16'3" x 9'5"  
Area: 153 sq. ft  
Counted as living area: No

Heated: No  
Finished: No  
Enclosed: No  
Contiguous: Yes  
Permitted: Yes  
Wet space: No  
Addition: No  
Conversion: No

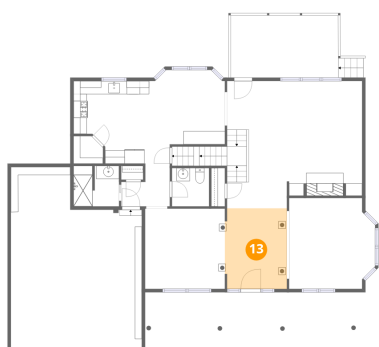
## 12 Floor 2 - Garage



Dimensions: 19'9" x 27'7"  
Area: 546 sq. ft  
Counted as living area: No

Heated: No  
Finished: No  
Enclosed: Yes  
Contiguous: Yes  
Permitted: Yes  
Wet space: No  
Addition: No  
Conversion: No

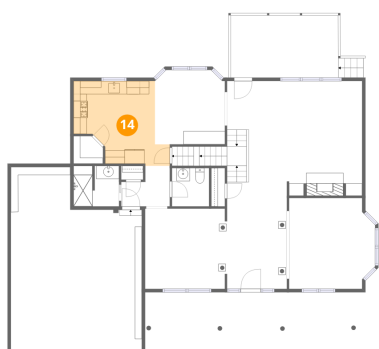
## 13 Floor 2 - Foyer



Dimensions: 9'5" x 12'2"  
Area: 114 sq. ft  
Counted as living area: Yes

Heated: Yes  
Finished: Yes  
Enclosed: Yes  
Contiguous: Yes  
Permitted: Yes  
Wet space: No  
Addition: No  
Conversion: No

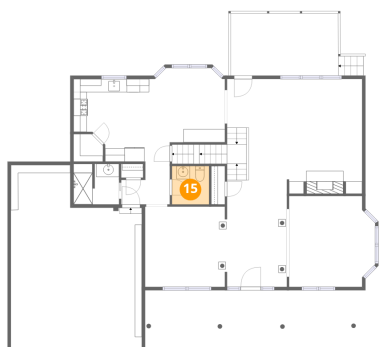
## 14 Floor 2 - Kitchen



Dimensions: 12'4" x 12'10"  
Area: 158 sq. ft  
Counted as living area: Yes

Heated: Yes  
Finished: Yes  
Enclosed: Yes  
Contiguous: Yes  
Permitted: Yes  
Wet space: No  
Addition: No  
Conversion: No

**15** Floor 2 - Bath



Dimensions: 5'7" x 5'10"  
Area: 33 sq. ft  
Counted as living area: Yes

Heated: Yes  
Finished: Yes  
Enclosed: Yes  
Contiguous: Yes  
Permitted: Yes  
Wet space: Yes  
Addition: No  
Conversion: No

**16** Floor 2 - Pantry



Dimensions: 4'5" x 4'2"  
Area: 19 sq. ft  
Counted as living area: Yes

Heated: Yes  
Finished: Yes  
Enclosed: Yes  
Contiguous: Yes  
Permitted: Yes  
Wet space: No  
Addition: No  
Conversion: No

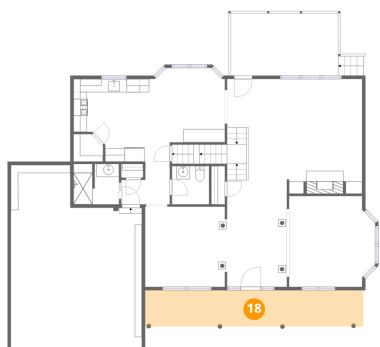
**17** Floor 2 - Hall



Dimensions: 7'4" x 6'2"  
Area: 45 sq. ft  
Counted as living area: Yes

Heated: Yes  
Finished: Yes  
Enclosed: Yes  
Contiguous: Yes  
Permitted: Yes  
Wet space: No  
Addition: No  
Conversion: No

**18** Floor 2 - Porch



Dimensions: 33'0" x 5'5"  
Area: 180 sq. ft  
Counted as living area: No

Heated: No  
Finished: No  
Enclosed: No  
Contiguous: Yes  
Permitted: Yes  
Wet space: No  
Addition: No  
Conversion: No

**19** Floor 3 - Primary Bath



Dimensions: 7'3" x 12'0"  
Area: 86 sq. ft  
Counted as living area: Yes

Heated: Yes  
Finished: Yes  
Enclosed: Yes  
Contiguous: Yes  
Permitted: Yes  
Wet space: Yes  
Addition: No  
Conversion: No

**20** Floor 3 - Bath



Dimensions: 4'8" x 9'1"  
Area: 42 sq. ft  
Counted as living area: Yes

Heated: Yes  
Finished: Yes  
Enclosed: Yes  
Contiguous: Yes  
Permitted: Yes  
Wet space: Yes  
Addition: No  
Conversion: No

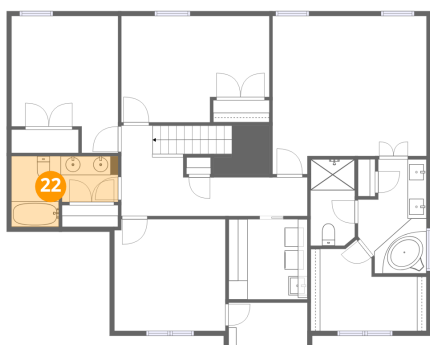
**21** Floor 3 - Laundry



Dimensions: 8'4" x 8'5"  
Area: 70 sq. ft  
Counted as living area: Yes

Heated: Yes  
Finished: Yes  
Enclosed: Yes  
Contiguous: Yes  
Permitted: Yes  
Wet space: No  
Addition: No  
Conversion: No

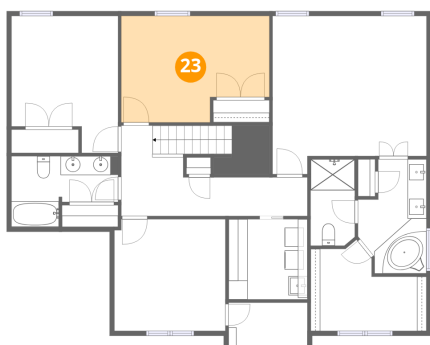
**22** Floor 3 - Bath



Dimensions: 11'3" x 7'5"  
Area: 83 sq. ft  
Counted as living area: Yes

Heated: Yes  
Finished: Yes  
Enclosed: Yes  
Contiguous: Yes  
Permitted: Yes  
Wet space: Yes  
Addition: No  
Conversion: No

**23** Floor 3 - Bedroom



Dimensions: 15'7" x 11'2"  
Area: 174 sq. ft  
Counted as living area: Yes

Heated: Yes  
Finished: Yes  
Enclosed: Yes  
Contiguous: Yes  
Permitted: Yes  
Wet space: No  
Addition: No  
Conversion: No

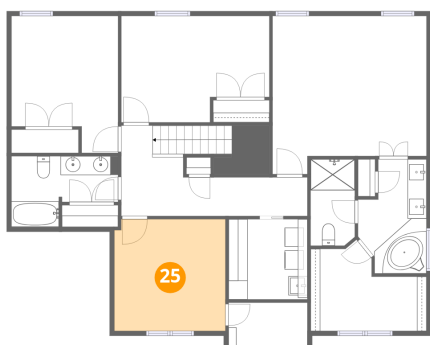
**24** Floor 3 - W.I.C.



Dimensions: 12'2" x 9'7"  
Area: 117 sq. ft  
Counted as living area: Yes

Heated: Yes  
Finished: Yes  
Enclosed: Yes  
Contiguous: Yes  
Permitted: Yes  
Wet space: No  
Addition: No  
Conversion: No

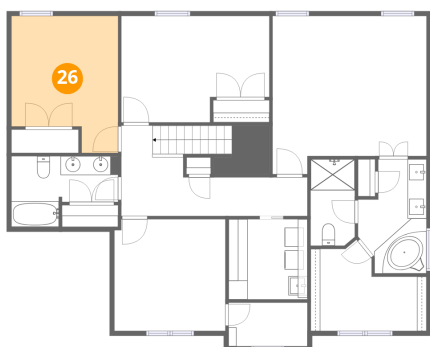
**25** Floor 3 - Bedroom



Dimensions: 11'8" x 11'9"  
Area: 137 sq. ft  
Counted as living area: Yes

Heated: Yes  
Finished: Yes  
Enclosed: Yes  
Contiguous: Yes  
Permitted: Yes  
Wet space: No  
Addition: No  
Conversion: No

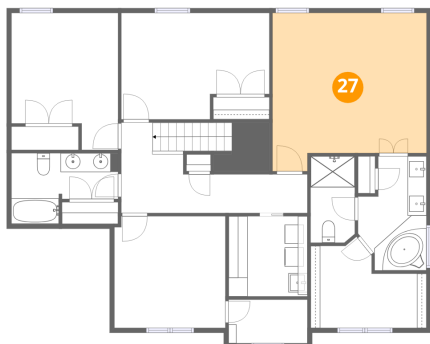
**26** Floor 3 - Bedroom



Dimensions: 11'3" x 14'5"  
Area: 161 sq. ft  
Counted as living area: Yes

Heated: Yes  
Finished: Yes  
Enclosed: Yes  
Contiguous: Yes  
Permitted: Yes  
Wet space: No  
Addition: No  
Conversion: No

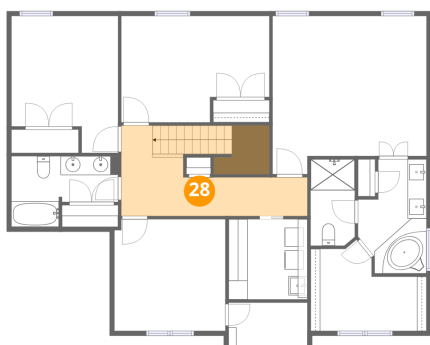
**27** Floor 3 - Primary Bedroom



Dimensions: 16'2" x 16'8"  
Area: 269 sq. ft  
Counted as living area: Yes

Heated: Yes  
Finished: Yes  
Enclosed: Yes  
Contiguous: Yes  
Permitted: Yes  
Wet space: No  
Addition: No  
Conversion: No

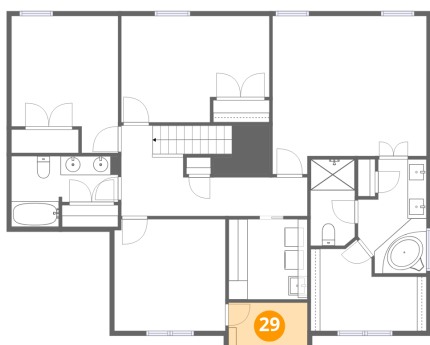
**28** Floor 3 - Hall



Dimensions: 19'7" x 9'6"  
Area: 186 sq. ft  
Counted as living area: Yes

Heated: Yes  
Finished: Yes  
Enclosed: Yes  
Contiguous: Yes  
Permitted: Yes  
Wet space: No  
Addition: No  
Conversion: No

**29** Floor 3 - W.I.C.



Dimensions: 8'4" x 4'7"  
Area: 38 sq. ft  
Counted as living area: Yes

Heated: Yes  
Finished: Yes  
Enclosed: Yes  
Contiguous: Yes  
Permitted: Yes  
Wet space: No  
Addition: No  
Conversion: No