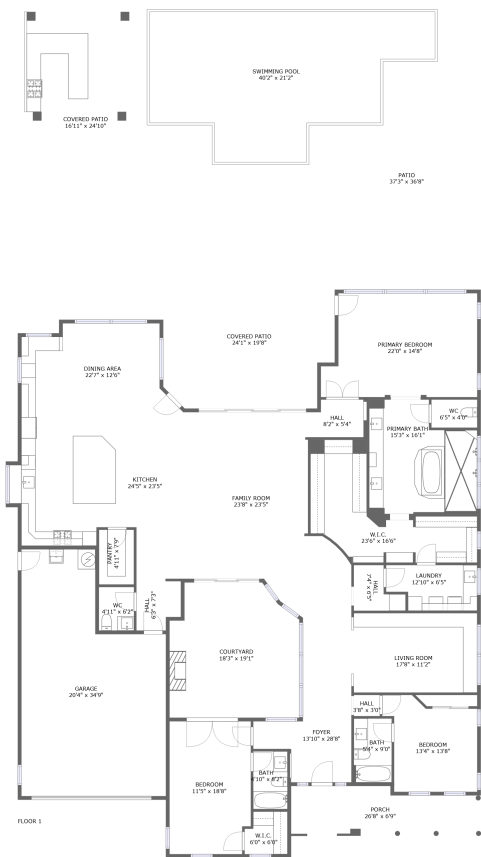


Home report

20546 West Pasadena Avenue, Verrado, Buckeye, Maricopa County, Arizona, United States, 85396




Total Area: 3187 sq. ft

Floor 1: 3187 sq. ft

Excluded: Garage 588 sq. ft, Courtyard 321 sq. ft, Patio 517 sq. ft, Covered patio 859 sq. ft, Porch 162 sq. ft, Walls: 217 sq. ft

Property summary

1 Floors

3 Bedrooms

3 Bathrooms

Home report

**20546 West Pasadena Avenue, Verrado, Buckeye, Maricopa
County, Arizona, United States, 85396**



1
Half baths



1
Garages

Home report

20546 West Pasadena Avenue, Verrado, Buckeye, Maricopa County, Arizona, United States, 85396



Room dimensions

Floor 1 Total:3187sqft Excluded: 2447sqft

#		Max Dimensions	sqft	Included
1	Laundry	12'10" x 6'5"	74 sq. ft	Yes
2	Courtyard	18'3" x 19'1"	321 sq. ft	No
3	Garage	20'4" x 34'9"	588 sq. ft	No
4	WC	6'5" x 4'0"	26 sq. ft	Yes
5	Bath	4'10" x 8'2"	39 sq. ft	Yes
6	Hall	7'4" x 6'5"	34 sq. ft	Yes
7	Primary Bath	15'3" x 16'1"	216 sq. ft	Yes
8	W.I.C.	6'0" x 6'0"	33 sq. ft	Yes
9	Kitchen	24'5" x 23'5"	453 sq. ft	Yes
10	Bedroom	11'5" x 18'8"	209 sq. ft	Yes
11	Bath	5'4" x 9'0"	48 sq. ft	Yes

Home report

20546 West Pasadena Avenue, Verrado, Buckeye, Maricopa County, Arizona, United States, 85396

#		Max Dimensions	sqft	Included
12	Hall	6'3" x 7'3"	41 sq. ft	Yes
13	Dining Area	22'7" x 12'6"	238 sq. ft	Yes
14	Covered Patio	16'11" x 24'10"	419 sq. ft	No
15	Swimming Pool	40'2" x 21'2"	631 sq. ft	No
16	Living Room	17'8" x 11'2"	197 sq. ft	Yes
17	Bedroom	13'4" x 13'8"	149 sq. ft	Yes
18	Hall	8'2" x 5'4"	42 sq. ft	Yes
19	Covered Patio	24'1" x 19'8"	440 sq. ft	No
20	W.I.C.	23'6" x 16'6"	218 sq. ft	Yes
21	Foyer	13'10" x 28'8"	249 sq. ft	Yes
22	Primary Bedroom	22'0" x 14'8"	297 sq. ft	Yes
23	Hall	3'8" x 3'0"	11 sq. ft	Yes
24	Porch	26'8" x 6'9"	162 sq. ft	No
25	WC	4'11" x 6'2"	30 sq. ft	Yes
26	Pantry	4'11" x 7'9"	38 sq. ft	Yes
27	Patio	37'3" x 36'8"	517 sq. ft	No
28	Family Room	23'8" x 23'5"	440 sq. ft	Yes

20546 West Pasadena Avenue, Verrado, Buckeye, Maricopa County, Arizona, United States, 85396

1 Floor 1 - Laundry



Max Dimensions: 12'10" x 6'5"
Calculated Area: 74 sq. ft
Included: Yes

Heated: Yes
Finished: Yes
Enclosed: Yes
Contiguous: Yes
Permitted: Yes
Wet space: No
Addition: No
Conversion: No

2 Floor 1 - Courtyard

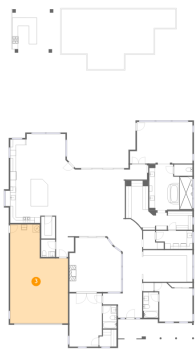


Max Dimensions: 18'3" x 19'1"
Calculated Area: 321 sq. ft
Included: No

Heated: No
Finished: No
Enclosed: No
Contiguous: Yes
Permitted: No
Wet space: No
Addition: No
Conversion: No

20546 West Pasadena Avenue, Verrado, Buckeye, Maricopa County, Arizona, United States, 85396

3 Floor 1 - Garage



Max Dimensions: 20'4" x 34'9"
Calculated Area: 588 sq. ft
Included: No

Heated: No
Finished: No
Enclosed: Yes
Contiguous: Yes
Permitted: Yes
Wet space: No
Addition: No
Conversion: No

4 Floor 1 - WC



Max Dimensions: 6'5" x 4'0"
Calculated Area: 26 sq. ft
Included: Yes

Heated: Yes
Finished: Yes
Enclosed: Yes
Contiguous: Yes
Permitted: Yes
Wet space: Yes
Addition: No
Conversion: No

5 Floor 1 - Bath



Max Dimensions: 4'10" x 8'2"
Calculated Area: 39 sq. ft
Included: Yes

Heated: Yes
Finished: Yes
Enclosed: Yes
Contiguous: Yes
Permitted: Yes
Wet space: Yes
Addition: No
Conversion: No

20546 West Pasadena Avenue, Verrado, Buckeye, Maricopa County, Arizona, United States, 85396

6 Floor 1 - Hall



Max Dimensions: 7'4" x 6'5"
Calculated Area: 34 sq. ft
Included: Yes

Heated: Yes
Finished: Yes
Enclosed: Yes
Contiguous: Yes
Permitted: Yes
Wet space: No
Addition: No
Conversion: No

7 Floor 1 - Primary Bath



Max Dimensions: 15'3" x 16'1"
Calculated Area: 216 sq. ft
Included: Yes

Heated: Yes
Finished: Yes
Enclosed: Yes
Contiguous: Yes
Permitted: Yes
Wet space: Yes
Addition: No
Conversion: No

8 Floor 1 - W.I.C.



Max Dimensions: 6'0" x 6'0"
Calculated Area: 33 sq. ft
Included: Yes

Heated: Yes
Finished: Yes
Enclosed: Yes
Contiguous: Yes
Permitted: Yes
Wet space: No
Addition: No
Conversion: No

20546 West Pasadena Avenue, Verrado, Buckeye, Maricopa County, Arizona, United States, 85396

9 Floor 1 - Kitchen



Max Dimensions: 24'5" x 23'5"
Calculated Area: 453 sq. ft
Included: Yes

Heated: Yes
Finished: Yes
Enclosed: Yes
Contiguous: Yes
Permitted: Yes
Wet space: No
Addition: No
Conversion: No

10 Floor 1 - Bedroom



Max Dimensions: 11'5" x 18'8"
Calculated Area: 209 sq. ft
Included: Yes

Heated: Yes
Finished: Yes
Enclosed: Yes
Contiguous: Yes
Permitted: Yes
Wet space: No
Addition: No
Conversion: No

11 Floor 1 - Bath



Max Dimensions: 5'4" x 9'0"
Calculated Area: 48 sq. ft
Included: Yes

Heated: Yes
Finished: Yes
Enclosed: Yes
Contiguous: Yes
Permitted: Yes
Wet space: Yes
Addition: No
Conversion: No

20546 West Pasadena Avenue, Verrado, Buckeye, Maricopa County, Arizona, United States, 85396

12 Floor 1 - Hall



Max Dimensions: 6'3" x 7'3"
Calculated Area: 41 sq. ft
Included: Yes

Heated: Yes
Finished: Yes
Enclosed: Yes
Contiguous: Yes
Permitted: Yes
Wet space: No
Addition: No
Conversion: No

13 Floor 1 - Dining Area



Max Dimensions: 22'7" x 12'6"
Calculated Area: 238 sq. ft
Included: Yes

Heated: Yes
Finished: Yes
Enclosed: Yes
Contiguous: Yes
Permitted: Yes
Wet space: No
Addition: No
Conversion: No

14 Floor 1 - Covered Patio



Max Dimensions: 16'11" x 24'10"
Calculated Area: 419 sq. ft
Included: No

Heated: No
Finished: Yes
Enclosed: No
Contiguous: Yes
Permitted: Yes
Wet space: No
Addition: No
Conversion: No

20546 West Pasadena Avenue, Verrado, Buckeye, Maricopa County, Arizona, United States, 85396

15 Floor 1 - Swimming Pool



Max Dimensions: 40'2" x 21'2"
Calculated Area: 631 sq. ft
Included: No

Heated: No
Finished: No
Enclosed: No
Contiguous: Yes
Permitted: No
Wet space: No
Addition: No
Conversion: No

16 Floor 1 - Living Room



Max Dimensions: 17'8" x 11'2"
Calculated Area: 197 sq. ft
Included: Yes

Heated: Yes
Finished: Yes
Enclosed: Yes
Contiguous: Yes
Permitted: Yes
Wet space: No
Addition: No
Conversion: No

17 Floor 1 - Bedroom



Max Dimensions: 13'4" x 13'8"
Calculated Area: 149 sq. ft
Included: Yes

Heated: Yes
Finished: Yes
Enclosed: Yes
Contiguous: Yes
Permitted: Yes
Wet space: No
Addition: No
Conversion: No

20546 West Pasadena Avenue, Verrado, Buckeye, Maricopa County, Arizona, United States, 85396

18 Floor 1 - Hall



Max Dimensions: 8'2" x 5'4"
Calculated Area: 42 sq. ft
Included: Yes

Heated: Yes
Finished: Yes
Enclosed: Yes
Contiguous: Yes
Permitted: Yes
Wet space: No
Addition: No
Conversion: No

19 Floor 1 - Covered Patio



Max Dimensions: 24'1" x 19'8"
Calculated Area: 440 sq. ft
Included: No

Heated: No
Finished: Yes
Enclosed: No
Contiguous: Yes
Permitted: Yes
Wet space: No
Addition: No
Conversion: No

20 Floor 1 - W.I.C.



Max Dimensions: 23'6" x 16'6"
Calculated Area: 218 sq. ft
Included: Yes

Heated: Yes
Finished: Yes
Enclosed: Yes
Contiguous: Yes
Permitted: Yes
Wet space: No
Addition: No
Conversion: No

20546 West Pasadena Avenue, Verrado, Buckeye, Maricopa County, Arizona, United States, 85396

21 Floor 1 - Foyer



Max Dimensions: 13'10" x 28'8"
Calculated Area: 249 sq. ft
Included: Yes

Heated: Yes
Finished: Yes
Enclosed: Yes
Contiguous: Yes
Permitted: Yes
Wet space: No
Addition: No
Conversion: No

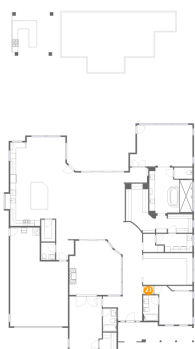
22 Floor 1 - Primary Bedroom



Max Dimensions: 22'0" x 14'8"
Calculated Area: 297 sq. ft
Included: Yes

Heated: Yes
Finished: Yes
Enclosed: Yes
Contiguous: Yes
Permitted: Yes
Wet space: No
Addition: No
Conversion: No

23 Floor 1 - Hall



Max Dimensions: 3'8" x 3'0"
Calculated Area: 11 sq. ft
Included: Yes

Heated: Yes
Finished: Yes
Enclosed: Yes
Contiguous: Yes
Permitted: Yes
Wet space: No
Addition: No
Conversion: No

20546 West Pasadena Avenue, Verrado, Buckeye, Maricopa County, Arizona, United States, 85396

24 Floor 1 - Porch



Max Dimensions: 26'8" x 6'9"
Calculated Area: 162 sq. ft
Included: No

Heated: No
Finished: Yes
Enclosed: No
Contiguous: Yes
Permitted: Yes
Wet space: No
Addition: No
Conversion: No

25 Floor 1 - WC



Max Dimensions: 4'11" x 6'2"
Calculated Area: 30 sq. ft
Included: Yes

Heated: Yes
Finished: Yes
Enclosed: Yes
Contiguous: Yes
Permitted: Yes
Wet space: Yes
Addition: No
Conversion: No

26 Floor 1 - Pantry



Max Dimensions: 4'11" x 7'9"
Calculated Area: 38 sq. ft
Included: Yes

Heated: Yes
Finished: Yes
Enclosed: Yes
Contiguous: Yes
Permitted: Yes
Wet space: No
Addition: No
Conversion: No

20546 West Pasadena Avenue, Verrado, Buckeye, Maricopa County, Arizona, United States, 85396

27 Floor 1 - Patio



Max Dimensions: 37'3" x 36'8"
Calculated Area: 517 sq. ft
Included: No

Heated: No
Finished: Yes
Enclosed: No
Contiguous: Yes
Permitted: Yes
Wet space: No
Addition: No
Conversion: No

28 Floor 1 - Family Room



Max Dimensions: 23'8" x 23'5"
Calculated Area: 440 sq. ft
Included: Yes

Heated: Yes
Finished: Yes
Enclosed: Yes
Contiguous: Yes
Permitted: Yes
Wet space: No
Addition: No
Conversion: No