

Home data report

2739 Kressler Road, Heidelberg, Ontario N0B 2M1, Canada



Total Area: 3626 sq. ft

Basement: 768 sq. ft, 1st Floor: 1300 sq. ft, 2nd Floor: 1558 sq. ft

Excluded: Storage 313 sq. ft, Utility 153 sq. ft, Garage 293 sq. ft, Fireplace 17 sq. ft, Walls: 287 sq. ft

Property summary

 **3** Floors

 **4** Bedrooms

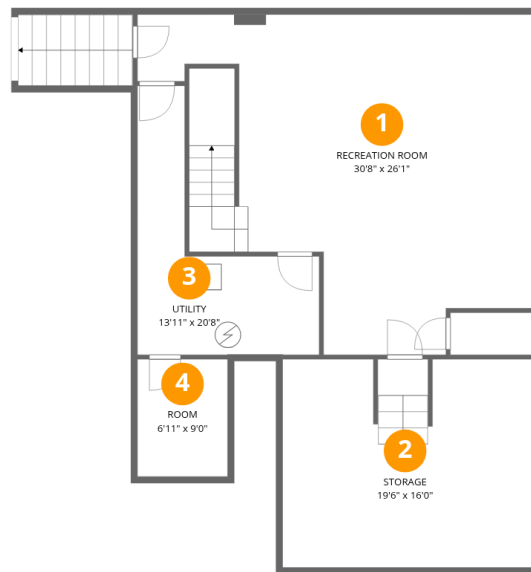
 **2** Bathrooms

Home data report

2739 Kressler Road, Heidelberg, Ontario N0B 2M1, Canada

 **1**
Half baths

 **1**
Garages



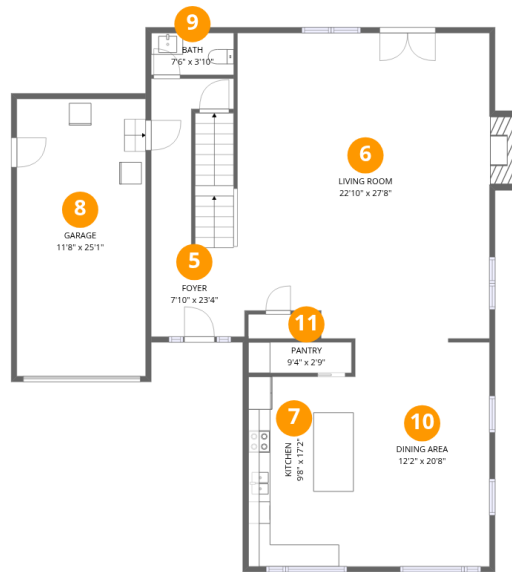
Room dimensions

Floor 1 Below grade

Total:768sqft

Excluded: 466sqft

#		Dimensions	sqft	Counted as living area
1	Recreation Room	30'8" x 26'1"	606 sq. ft	Yes
2	Storage	19'6" x 16'0"	308 sq. ft	No
3	Utility	13'11" x 20'8"	153 sq. ft	No
4	Room	6'11" x 9'0"	62 sq. ft	Yes



Room dimensions

Floor 2

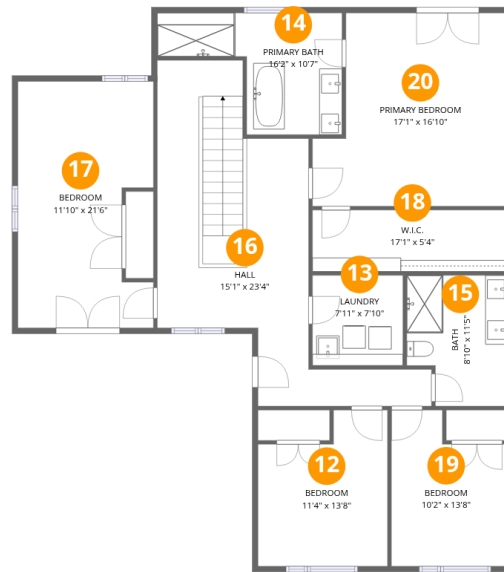
Total:1300sqft

Excluded: 310sqft

#		Dimensions	sqft	Counted as living area
5	Foyer	7'10" x 23'4"	175 sq. ft	Yes
6	Living Room	22'10" x 27'8"	626 sq. ft	Yes
7	Kitchen	9'8" x 17'2"	166 sq. ft	Yes
8	Garage	11'8" x 25'1"	293 sq. ft	No
9	Bath	7'6" x 3'10"	28 sq. ft	Yes
10	Dining Area	12'2" x 20'8"	250 sq. ft	Yes
11	Pantry	9'4" x 2'9"	26 sq. ft	Yes

Home data report

2739 Kressler Road, Heidelberg, Ontario N0B 2M1, Canada



Room dimensions

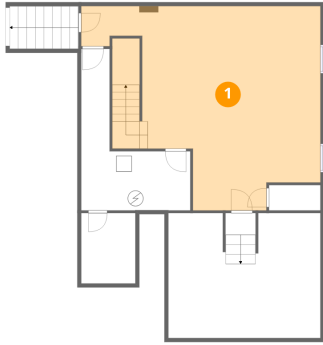
Floor 3

Total: 1558 sqft

Excluded: 0 sqft

#		Dimensions	sqft	Counted as living area
12	Bedroom	11'4" x 13'8"	135 sq. ft	Yes
13	Laundry	7'11" x 7'10"	62 sq. ft	Yes
14	Primary Bath	16'2" x 10'7"	118 sq. ft	Yes
15	Bath	8'10" x 11'5"	92 sq. ft	Yes
16	Hall	15'1" x 23'4"	334 sq. ft	Yes
17	Bedroom	11'10" x 21'6"	232 sq. ft	Yes
18	W.I.C.	17'1" x 5'4"	92 sq. ft	Yes
19	Bedroom	10'2" x 13'8"	122 sq. ft	Yes
20	Primary Bedroom	17'1" x 16'10"	256 sq. ft	Yes

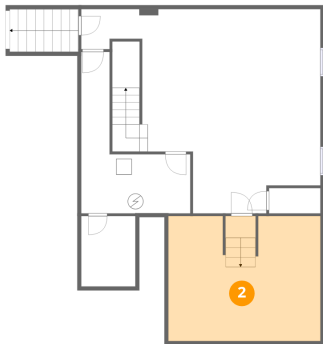
1 Floor 1 - Recreation Room



Dimensions: 30'8" x 26'1"
Area: 606 sq. ft
Counted as living area: Yes

Heated: Yes
Finished: Yes
Enclosed: Yes
Contiguous: Yes
Permitted: Yes
Wet space: No
Addition: No
Conversion: No

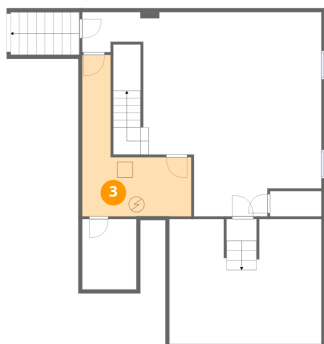
2 Floor 1 - Storage



Dimensions: 19'6" x 16'0"
Area: 308 sq. ft
Counted as living area: No

Heated: No
Finished: No
Enclosed: No
Contiguous: Yes
Permitted: Yes
Wet space: No
Addition: No
Conversion: No

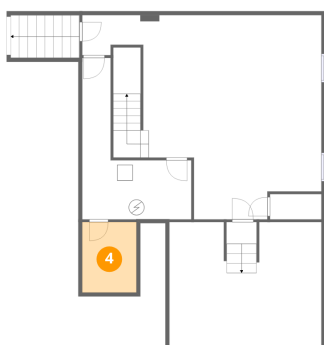
3 Floor 1 - Utility



Dimensions: 13'11" x 20'8"
Area: 153 sq. ft
Counted as living area: No

Heated: Yes
Finished: No
Enclosed: Yes
Contiguous: Yes
Permitted: Yes
Wet space: No
Addition: No
Conversion: No

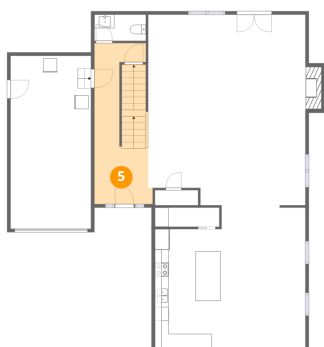
4 Floor 1 - Room



Dimensions: 6'11" x 9'0"
Area: 62 sq. ft
Counted as living area: No

Heated: Yes
Finished: Yes
Enclosed: Yes
Contiguous: No
Permitted: Yes
Wet space: No
Addition: No
Conversion: No

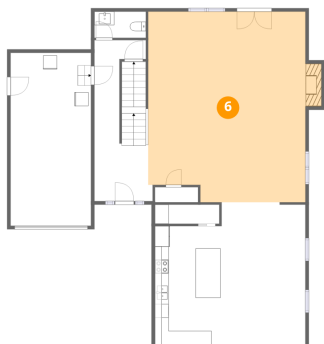
5 Floor 2 - Foyer



Dimensions: 7'10" x 23'4"
Area: 175 sq. ft
Counted as living area: Yes

Heated: Yes
Finished: Yes
Enclosed: Yes
Contiguous: Yes
Permitted: Yes
Wet space: No
Addition: No
Conversion: No

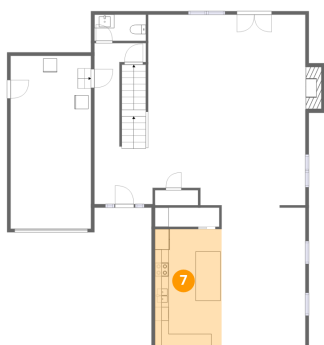
6 Floor 2 - Living Room



Dimensions: 22'10" x 27'8"
Area: 626 sq. ft
Counted as living area: Yes

Heated: Yes
Finished: Yes
Enclosed: Yes
Contiguous: Yes
Permitted: Yes
Wet space: No
Addition: No
Conversion: No

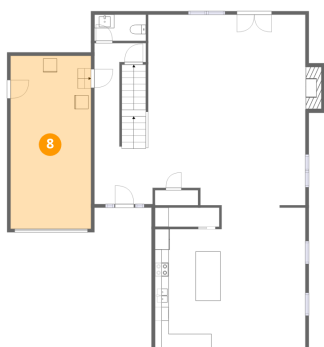
7 Floor 2 - Kitchen



Dimensions: 9'8" x 17'2"
Area: 166 sq. ft
Counted as living area: Yes

Heated: Yes
Finished: Yes
Enclosed: Yes
Contiguous: Yes
Permitted: Yes
Wet space: No
Addition: No
Conversion: No

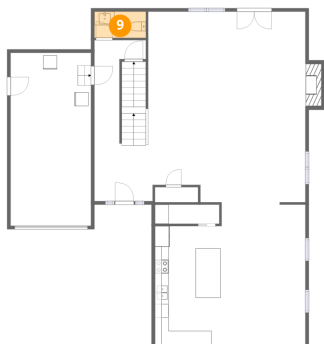
8 Floor 2 - Garage



Dimensions: 11'8" x 25'1"
Area: 293 sq. ft
Counted as living area: No

Heated: No
Finished: No
Enclosed: Yes
Contiguous: Yes
Permitted: Yes
Wet space: No
Addition: No
Conversion: No

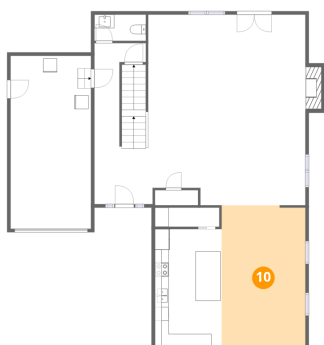
9 Floor 2 - Bath



Dimensions: 7'6" x 3'10"
Area: 28 sq. ft
Counted as living area: Yes

Heated: Yes
Finished: Yes
Enclosed: Yes
Contiguous: Yes
Permitted: Yes
Wet space: Yes
Addition: No
Conversion: No

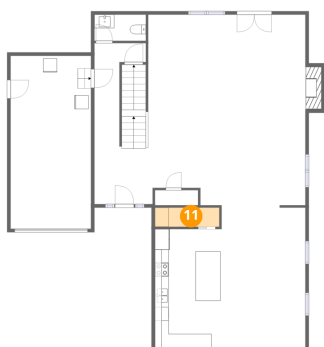
10 Floor 2 - Dining Area



Dimensions: 12'2" x 20'8"
Area: 250 sq. ft
Counted as living area: Yes

Heated: Yes
Finished: Yes
Enclosed: Yes
Contiguous: Yes
Permitted: Yes
Wet space: No
Addition: No
Conversion: No

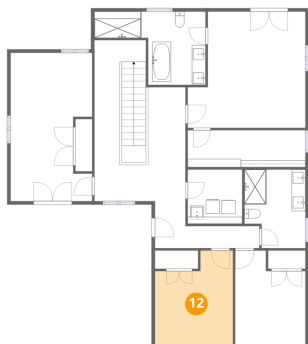
11 Floor 2 - Pantry



Dimensions: 9'4" x 2'9"
Area: 26 sq. ft
Counted as living area: Yes

Heated: Yes
Finished: Yes
Enclosed: Yes
Contiguous: Yes
Permitted: Yes
Wet space: No
Addition: No
Conversion: No

12 Floor 3 - Bedroom



Dimensions: 11'4" x 13'8"
Area: 135 sq. ft
Counted as living area: Yes

Heated: Yes
Finished: Yes
Enclosed: Yes
Contiguous: Yes
Permitted: Yes
Wet space: No
Addition: No
Conversion: No

13 Floor 3 - Laundry



Dimensions: 7'11" x 7'10"
Area: 62 sq. ft
Counted as living area: Yes

Heated: Yes
Finished: Yes
Enclosed: Yes
Contiguous: Yes
Permitted: Yes
Wet space: No
Addition: No
Conversion: No

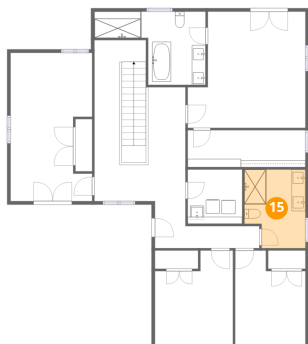
14 Floor 3 - Primary Bath



Dimensions: 16'2" x 10'7"
Area: 118 sq. ft
Counted as living area: Yes

Heated: Yes
Finished: Yes
Enclosed: Yes
Contiguous: Yes
Permitted: Yes
Wet space: Yes
Addition: No
Conversion: No

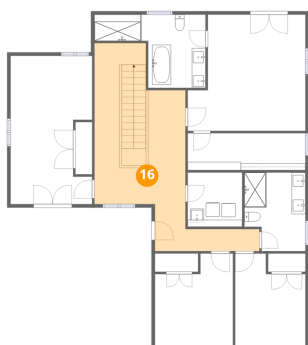
15 Floor 3 - Bath



Dimensions: 8'10" x 11'5"
Area: 92 sq. ft
Counted as living area: Yes

Heated: Yes
Finished: Yes
Enclosed: Yes
Contiguous: Yes
Permitted: Yes
Wet space: Yes
Addition: No
Conversion: No

16 Floor 3 - Hall



Dimensions: 15'1" x 23'4"
Area: 334 sq. ft
Counted as living area: Yes

Heated: Yes
Finished: Yes
Enclosed: Yes
Contiguous: Yes
Permitted: Yes
Wet space: No
Addition: No
Conversion: No

17 Floor 3 - Bedroom



Dimensions: 11'10" x 21'6"
Area: 232 sq. ft
Counted as living area: Yes

Heated: Yes
Finished: Yes
Enclosed: Yes
Contiguous: Yes
Permitted: Yes
Wet space: No
Addition: No
Conversion: No

18 Floor 3 - W.I.C.



Dimensions: 17'1" x 5'4"
Area: 92 sq. ft
Counted as living area: Yes

Heated: Yes
Finished: Yes
Enclosed: Yes
Contiguous: Yes
Permitted: Yes
Wet space: No
Addition: No
Conversion: No

19 Floor 3 - Bedroom



Dimensions: 10'2" x 13'8"
Area: 122 sq. ft
Counted as living area: Yes

Heated: Yes
Finished: Yes
Enclosed: Yes
Contiguous: Yes
Permitted: Yes
Wet space: No
Addition: No
Conversion: No

20 Floor 3 - Primary Bedroom



Dimensions: 17'1" x 16'10"
Area: 256 sq. ft
Counted as living area: Yes

Heated: Yes
Finished: Yes
Enclosed: Yes
Contiguous: Yes
Permitted: Yes
Wet space: No
Addition: No
Conversion: No