

Home report

747 Heartland Lane, South Elgin, Kane County, Illinois, United States, 60177



Total Area: 3440 sq. ft

Below Ground: 974 sq. ft, Floor 2: 1187 sq. ft, Floor 3: 1279 sq. ft  
Excluded: Storage 138 sq. ft, Utility 75 sq. ft, Garage 582 sq. ft, Walls: 288 sq. ft

Property summary

 **3** Floors

 **5** Bedrooms

 **3** Bathrooms

Home report

**747 Heartland Lane, South Elgin, Kane County, Illinois, United States, 60177**

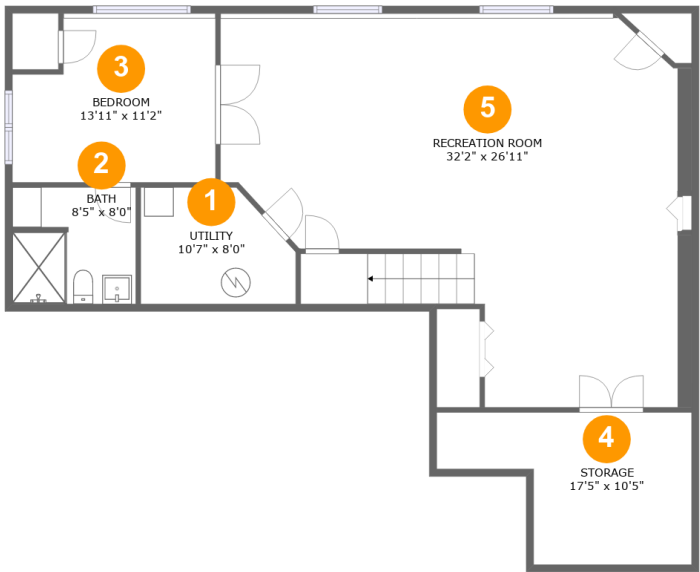


**1**  
Half baths



**1**  
Garages

747 Heartland Lane, South Elgin, Kane County, Illinois, United States, 60177



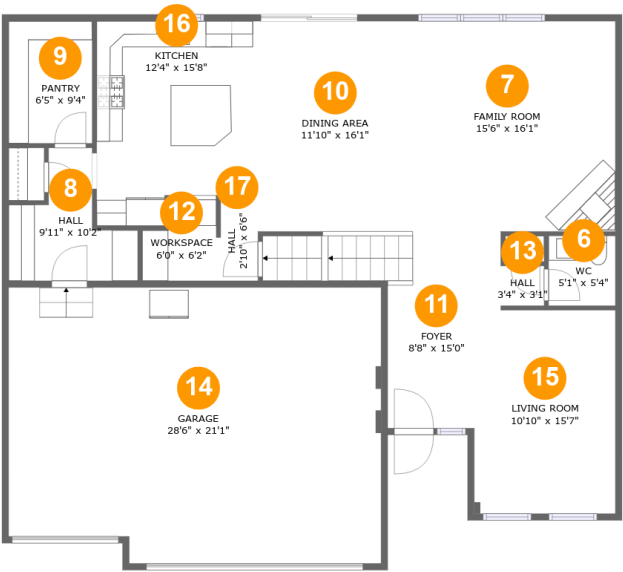
Room dimensions

Floor 1 Below ground Total:974sqft    Excluded: 213sqft

#		Max Dimensions	sqft	Included
1	Utility	10'7" x 8'0"	75 sq. ft	No
2	Bath	8'5" x 8'0"	66 sq. ft	Yes
3	Bedroom	13'11" x 11'2"	146 sq. ft	Yes
4	Storage	17'5" x 10'5"	138 sq. ft	No
5	Recreation Room	32'2" x 26'11"	668 sq. ft	Yes

Home report

747 Heartland Lane, South Elgin, Kane County, Illinois, United States, 60177



Room dimensions

Floor 2

Total:1187sqft

Excluded: 582sqft

#		Max Dimensions	sqft	Included
6	WC	5'1" x 5'4"	27 sq. ft	Yes
7	Family Room	15'6" x 16'1"	249 sq. ft	Yes
8	Hall	9'11" x 10'2"	65 sq. ft	Yes
9	Pantry	6'5" x 9'4"	60 sq. ft	Yes
10	Dining Area	11'10" x 16'1"	190 sq. ft	Yes
11	Foyer	8'8" x 15'0"	146 sq. ft	Yes
12	Workspace	6'0" x 6'2"	32 sq. ft	Yes
13	Hall	3'4" x 3'1"	10 sq. ft	Yes
14	Garage	28'6" x 21'1"	582 sq. ft	No
15	Living Room	10'10" x 15'7"	168 sq. ft	Yes
16	Kitchen	12'4" x 15'8"	176 sq. ft	Yes

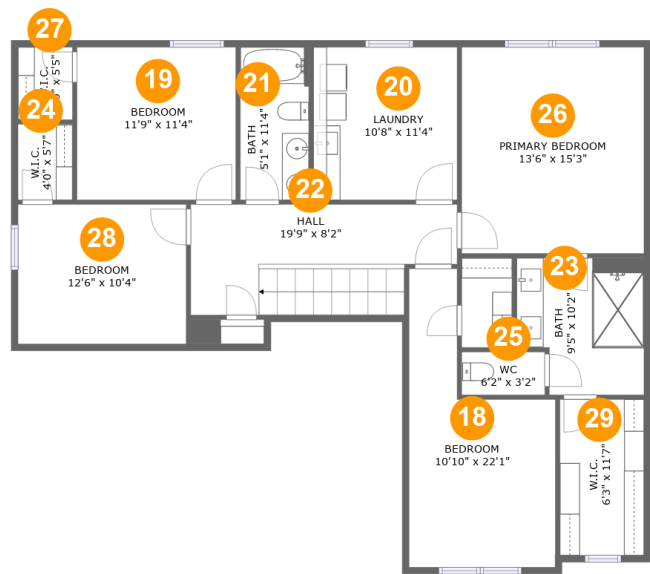
Home report

747 Heartland Lane, South Elgin, Kane County, Illinois, United States, 60177

#		Max Dimensions	sqft	Included
17	Hall	2'10" x 6'6"	19 sq. ft	Yes

Home report

747 Heartland Lane, South Elgin, Kane County, Illinois, United States, 60177



Room dimensions

Floor 3

Total:1279sqft

Excluded: 0sqft

#		Max Dimensions	sqft	Included
18	Bedroom	10'10" x 22'1"	169 sq. ft	Yes
19	Bedroom	11'9" x 11'4"	133 sq. ft	Yes
20	Laundry	10'8" x 11'4"	121 sq. ft	Yes
21	Bath	5'1" x 11'4"	57 sq. ft	Yes
22	Hall	19'9" x 8'2"	147 sq. ft	Yes
23	Bath	9'5" x 10'2"	87 sq. ft	Yes
24	W.I.C.	4'0" x 5'7"	23 sq. ft	Yes
25	WC	6'2" x 3'2"	20 sq. ft	Yes
26	Primary Bedroom	13'6" x 15'3"	206 sq. ft	Yes
27	W.I.C.	4'0" x 5'5"	22 sq. ft	Yes
28	Bedroom	12'6" x 10'4"	129 sq. ft	Yes

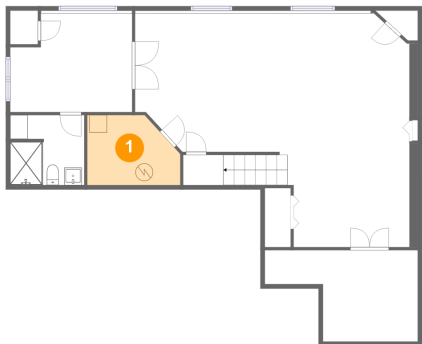
Home report

747 Heartland Lane, South Elgin, Kane County, Illinois, United States, 60177

#		Max Dimensions	sqft	Included
29	W.I.C.	6'3" x 11'7"	72 sq. ft	Yes

747 Heartland Lane, South Elgin, Kane County, Illinois, United States, 60177

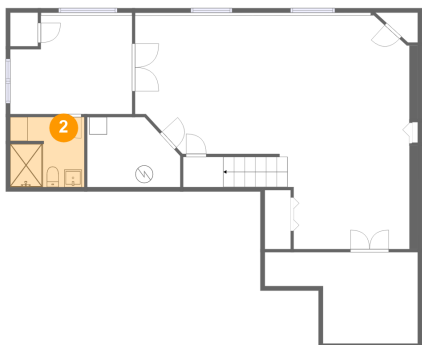
1 Floor 1 - Utility



Max Dimensions: 10'7" x 8'0"  
Calculated Area: 75 sq. ft  
Included: No

Heated: Yes  
Finished: No  
Enclosed: Yes  
Contiguous: Yes  
Permitted: Yes  
Wet space: No  
Addition: No  
Conversion: No

2 Floor 1 - Bath



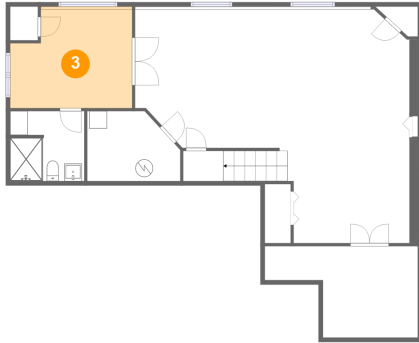
Max Dimensions: 8'5" x 8'0"  
Calculated Area: 66 sq. ft  
Included: Yes

Heated: Yes  
Finished: Yes  
Enclosed: Yes  
Contiguous: Yes  
Permitted: Yes  
Wet space: Yes  
Addition: No  
Conversion: No



747 Heartland Lane, South Elgin, Kane County, Illinois, United States, 60177

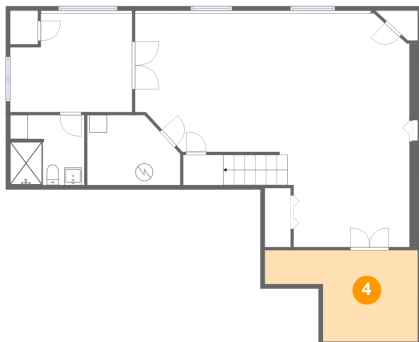
### 3 Floor 1 - Bedroom



Max Dimensions: 13'11" x 11'2"  
Calculated Area: 146 sq. ft  
Included: Yes

Heated: Yes  
Finished: Yes  
Enclosed: Yes  
Contiguous: Yes  
Permitted: Yes  
Wet space: No  
Addition: No  
Conversion: No

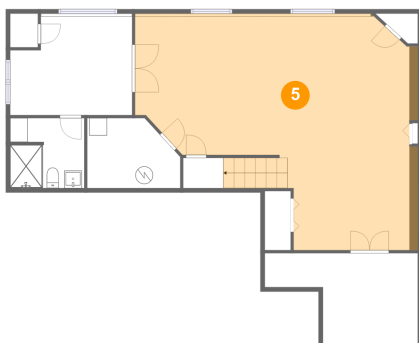
### 4 Floor 1 - Storage



Max Dimensions: 17'5" x 10'5"  
Calculated Area: 138 sq. ft  
Included: No

Heated: No  
Finished: No  
Enclosed: No  
Contiguous: Yes  
Permitted: Yes  
Wet space: No  
Addition: No  
Conversion: No

### 5 Floor 1 - Recreation Room



Max Dimensions: 32'2" x 26'11"  
Calculated Area: 668 sq. ft  
Included: Yes

Heated: Yes  
Finished: Yes  
Enclosed: Yes  
Contiguous: Yes  
Permitted: Yes  
Wet space: No  
Addition: No  
Conversion: No

747 Heartland Lane, South Elgin, Kane County, Illinois, United States, 60177

## 6 Floor 2 - WC



Max Dimensions: 5'1" x 5'4"  
Calculated Area: 27 sq. ft  
Included: Yes

Heated: Yes  
Finished: Yes  
Enclosed: Yes  
Contiguous: Yes  
Permitted: Yes  
Wet space: Yes  
Addition: No  
Conversion: No

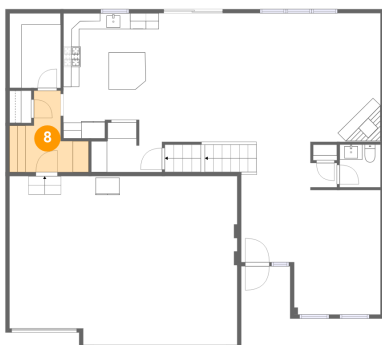
## 7 Floor 2 - Family Room



Max Dimensions: 15'6" x 16'1"  
Calculated Area: 249 sq. ft  
Included: Yes

Heated: Yes  
Finished: Yes  
Enclosed: Yes  
Contiguous: Yes  
Permitted: Yes  
Wet space: No  
Addition: No  
Conversion: No

## 8 Floor 2 - Hall

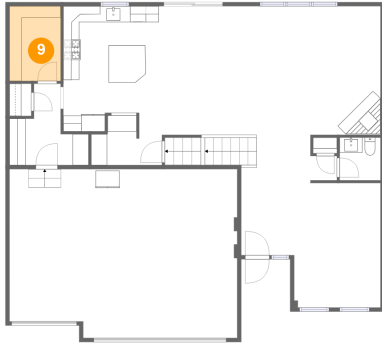


Max Dimensions: 9'11" x 10'2"  
Calculated Area: 65 sq. ft  
Included: Yes

Heated: Yes  
Finished: Yes  
Enclosed: Yes  
Contiguous: Yes  
Permitted: Yes  
Wet space: No  
Addition: No  
Conversion: No

747 Heartland Lane, South Elgin, Kane County, Illinois, United States, 60177

## 9 Floor 2 - Pantry



Max Dimensions: 6'5" x 9'4"  
Calculated Area: 60 sq. ft  
Included: Yes

Heated: Yes  
Finished: Yes  
Enclosed: Yes  
Contiguous: Yes  
Permitted: Yes  
Wet space: No  
Addition: No  
Conversion: No

## 10 Floor 2 - Dining Area



Max Dimensions: 11'10" x 16'1"  
Calculated Area: 190 sq. ft  
Included: Yes

Heated: Yes  
Finished: Yes  
Enclosed: Yes  
Contiguous: Yes  
Permitted: Yes  
Wet space: No  
Addition: No  
Conversion: No

## 11 Floor 2 - Foyer



Max Dimensions: 8'8" x 15'0"  
Calculated Area: 146 sq. ft  
Included: Yes

Heated: Yes  
Finished: Yes  
Enclosed: Yes  
Contiguous: Yes  
Permitted: Yes  
Wet space: No  
Addition: No  
Conversion: No

747 Heartland Lane, South Elgin, Kane County, Illinois, United States, 60177

## 12 Floor 2 - Workspace



Max Dimensions: 6'0" x 6'2"  
Calculated Area: 32 sq. ft  
Included: Yes

Heated: Yes  
Finished: Yes  
Enclosed: Yes  
Contiguous: Yes  
Permitted: Yes  
Wet space: No  
Addition: No  
Conversion: No

## 13 Floor 2 - Hall



Max Dimensions: 3'4" x 3'1"  
Calculated Area: 10 sq. ft  
Included: Yes

Heated: Yes  
Finished: Yes  
Enclosed: Yes  
Contiguous: Yes  
Permitted: Yes  
Wet space: No  
Addition: No  
Conversion: No

## 14 Floor 2 - Garage

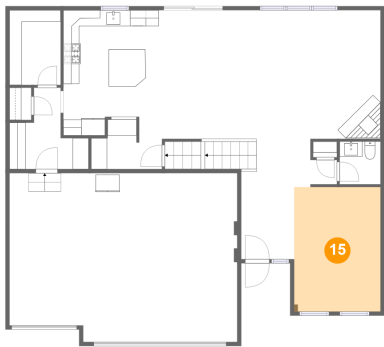


Max Dimensions: 28'6" x 21'1"  
Calculated Area: 582 sq. ft  
Included: No

Heated: No  
Finished: No  
Enclosed: Yes  
Contiguous: Yes  
Permitted: Yes  
Wet space: No  
Addition: No  
Conversion: No

747 Heartland Lane, South Elgin, Kane County, Illinois, United States, 60177

15 Floor 2 - Living Room



Max Dimensions: 10'10" x 15'7"  
Calculated Area: 168 sq. ft  
Included: Yes

Heated: Yes  
Finished: Yes  
Enclosed: Yes  
Contiguous: Yes  
Permitted: Yes  
Wet space: No  
Addition: No  
Conversion: No

16 Floor 2 - Kitchen



Max Dimensions: 12'4" x 15'8"  
Calculated Area: 176 sq. ft  
Included: Yes

Heated: Yes  
Finished: Yes  
Enclosed: Yes  
Contiguous: Yes  
Permitted: Yes  
Wet space: No  
Addition: No  
Conversion: No

17 Floor 2 - Hall



Max Dimensions: 2'10" x 6'6"  
Calculated Area: 19 sq. ft  
Included: Yes

Heated: Yes  
Finished: Yes  
Enclosed: Yes  
Contiguous: Yes  
Permitted: Yes  
Wet space: No  
Addition: No  
Conversion: No

747 Heartland Lane, South Elgin, Kane County, Illinois, United States, 60177

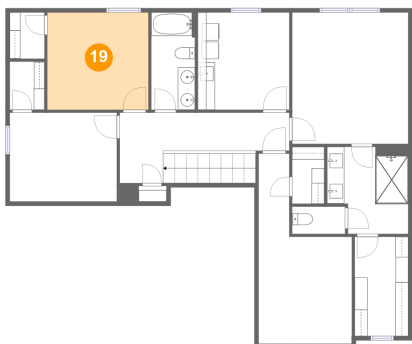
18 Floor 3 - Bedroom



Max Dimensions: 10'10" x 22'1"  
Calculated Area: 169 sq. ft  
Included: Yes

Heated: Yes  
Finished: Yes  
Enclosed: Yes  
Contiguous: Yes  
Permitted: Yes  
Wet space: No  
Addition: No  
Conversion: No

19 Floor 3 - Bedroom



Max Dimensions: 11'9" x 11'4"  
Calculated Area: 133 sq. ft  
Included: Yes

Heated: Yes  
Finished: Yes  
Enclosed: Yes  
Contiguous: Yes  
Permitted: Yes  
Wet space: No  
Addition: No  
Conversion: No

20 Floor 3 - Laundry

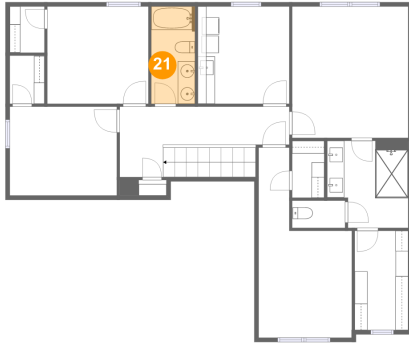


Max Dimensions: 10'8" x 11'4"  
Calculated Area: 121 sq. ft  
Included: Yes

Heated: Yes  
Finished: Yes  
Enclosed: Yes  
Contiguous: Yes  
Permitted: Yes  
Wet space: No  
Addition: No  
Conversion: No

747 Heartland Lane, South Elgin, Kane County, Illinois, United States, 60177

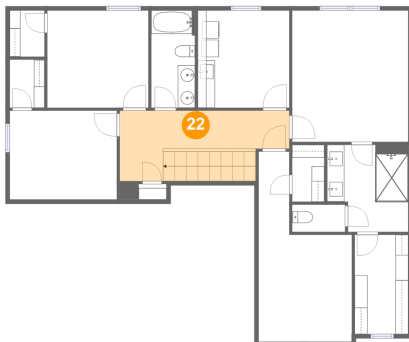
### 21 Floor 3 - Bath



Max Dimensions: 5'1" x 11'4"  
Calculated Area: 57 sq. ft  
Included: Yes

Heated: Yes  
Finished: Yes  
Enclosed: Yes  
Contiguous: Yes  
Permitted: Yes  
Wet space: Yes  
Addition: No  
Conversion: No

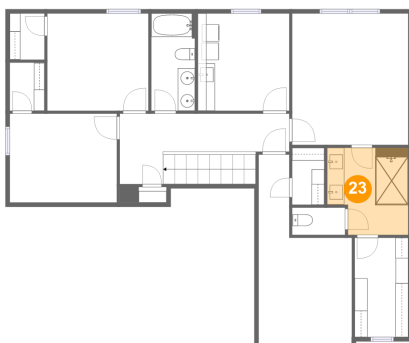
### 22 Floor 3 - Hall



Max Dimensions: 19'9" x 8'2"  
Calculated Area: 147 sq. ft  
Included: Yes

Heated: Yes  
Finished: Yes  
Enclosed: Yes  
Contiguous: Yes  
Permitted: Yes  
Wet space: No  
Addition: No  
Conversion: No

### 23 Floor 3 - Bath



Max Dimensions: 9'5" x 10'2"  
Calculated Area: 87 sq. ft  
Included: Yes

Heated: Yes  
Finished: Yes  
Enclosed: Yes  
Contiguous: Yes  
Permitted: Yes  
Wet space: Yes  
Addition: No  
Conversion: No

747 Heartland Lane, South Elgin, Kane County, Illinois, United States, 60177

24 Floor 3 - W.I.C.



Max Dimensions: 4'0" x 5'7"  
Calculated Area: 23 sq. ft  
Included: Yes

Heated: Yes  
Finished: Yes  
Enclosed: Yes  
Contiguous: Yes  
Permitted: Yes  
Wet space: No  
Addition: No  
Conversion: No

25 Floor 3 - WC



Max Dimensions: 6'2" x 3'2"  
Calculated Area: 20 sq. ft  
Included: Yes

Heated: Yes  
Finished: Yes  
Enclosed: Yes  
Contiguous: Yes  
Permitted: Yes  
Wet space: Yes  
Addition: No  
Conversion: No

26 Floor 3 - Primary Bedroom



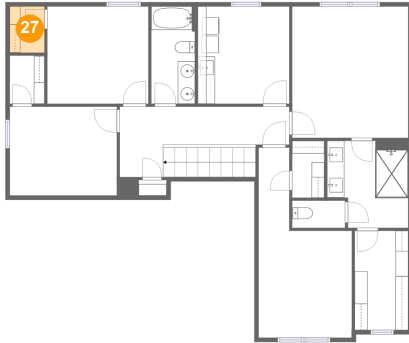
Max Dimensions: 13'6" x 15'3"  
Calculated Area: 206 sq. ft  
Included: Yes

Heated: Yes  
Finished: Yes  
Enclosed: Yes  
Contiguous: Yes  
Permitted: Yes  
Wet space: No  
Addition: No  
Conversion: No



747 Heartland Lane, South Elgin, Kane County, Illinois, United States, 60177

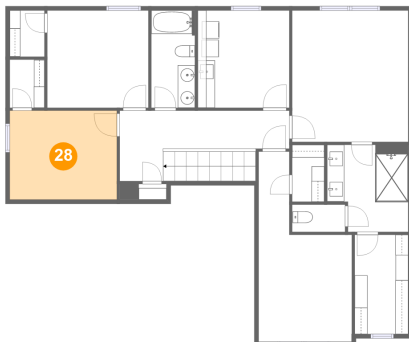
### 27 Floor 3 - W.I.C.



Max Dimensions: 4'0" x 5'5"  
Calculated Area: 22 sq. ft  
Included: Yes

Heated: Yes  
Finished: Yes  
Enclosed: Yes  
Contiguous: Yes  
Permitted: Yes  
Wet space: No  
Addition: No  
Conversion: No

### 28 Floor 3 - Bedroom



Max Dimensions: 12'6" x 10'4"  
Calculated Area: 129 sq. ft  
Included: Yes

Heated: Yes  
Finished: Yes  
Enclosed: Yes  
Contiguous: Yes  
Permitted: Yes  
Wet space: No  
Addition: No  
Conversion: No

### 29 Floor 3 - W.I.C.



Max Dimensions: 6'3" x 11'7"  
Calculated Area: 72 sq. ft  
Included: Yes

Heated: Yes  
Finished: Yes  
Enclosed: Yes  
Contiguous: Yes  
Permitted: Yes  
Wet space: No  
Addition: No  
Conversion: No