



## Total Area: 4035 sq. ft

Basement: 927 sq. ft, 1st Floor: 1448 sq. ft, 2nd Floor: 1660 sq. ft

Excluded: Basement 351 sq. ft, Utility 58 sq. ft, Garage 612 sq. ft, Porch 177 sq. ft, Covered deck 283 sq. ft, Open to below 84 sq. ft, Walls: 336 sq. ft

## Property summary



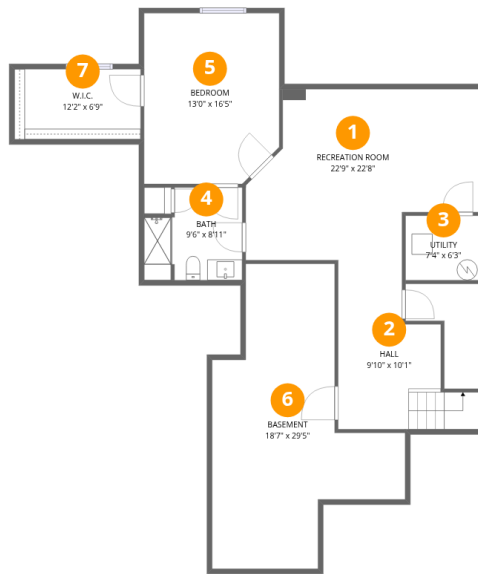
Home data report

# 3919 Desert Ridge Cir, Castle Rock, CO, US

 **1**  
Half baths

 **1**  
Garages

# 3919 Desert Ridge Cir, Castle Rock, CO, US



## Room dimensions

Floor 1 Below grade

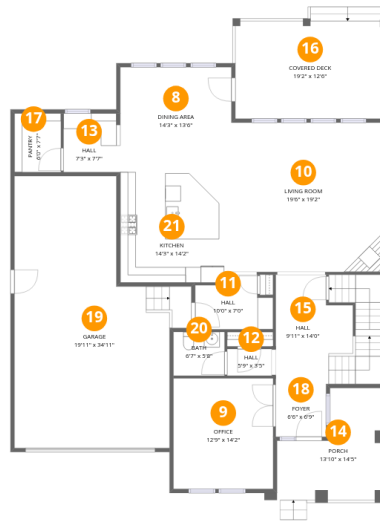
Total: 927 sqft

Excluded: 397 sqft

#		Dimensions	sqft	Counted as living area
1	Recreation Room	22'9" x 22'8"	351 sq. ft	Yes
2	Hall	9'10" x 10'1"	114 sq. ft	Yes
3	Utility	7'4" x 6'3"	46 sq. ft	No
4	Bath	9'6" x 8'11"	76 sq. ft	Yes
5	Bedroom	13'0" x 16'5"	208 sq. ft	Yes
6	Basement	18'7" x 29'5"	351 sq. ft	No
7	W.I.C.	12'2" x 6'9"	82 sq. ft	Yes

# Home data report

## 3919 Desert Ridge Cir, Castle Rock, CO, US



### Room dimensions

Floor 2

Total: 1448sqft

Excluded: 1072sqft

#		Dimensions	sqft	Counted as living area
8	Dining Area	14'3" x 13'6"	192 sq. ft	Yes
9	Office	12'9" x 14'2"	181 sq. ft	Yes
10	Living Room	19'6" x 19'2"	374 sq. ft	Yes
11	Hall	10'0" x 7'0"	59 sq. ft	Yes
12	Hall	5'9" x 3'5"	20 sq. ft	Yes
13	Hall	7'3" x 7'7"	54 sq. ft	Yes
14	Porch	13'10" x 14'5"	177 sq. ft	No
15	Hall	9'11" x 14'0"	190 sq. ft	Yes
16	Covered Deck	19'2" x 12'6"	283 sq. ft	No
17	Pantry	6'0" x 7'7"	45 sq. ft	Yes
18	Foyer	6'6" x 6'9"	44 sq. ft	Yes

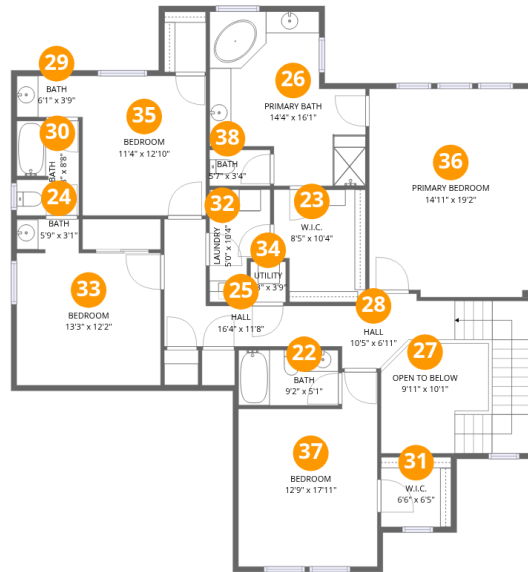
Home data report

**3919 Desert Ridge Cir, Castle Rock, CO, US**

#		Dimensions	sqft	Counted as living area
19	Garage	19'11" x 34'11"	612 sq. ft	No
20	Bath	6'7" x 5'8"	37 sq. ft	Yes
21	Kitchen	14'3" x 14'2"	201 sq. ft	Yes

# Home data report

## 3919 Desert Ridge Cir, Castle Rock, CO, US



### Room dimensions

Floor 3

Total: 1660 sqft

Excluded: 96 sqft

#		Dimensions	sqft	Counted as living area
22	Bath	9'2" x 5'1"	47 sq. ft	Yes
23	W.I.C.	8'5" x 10'4"	82 sq. ft	Yes
24	Bath	5'9" x 3'1"	17 sq. ft	Yes
25	Hall	16'4" x 11'8"	92 sq. ft	Yes
26	Primary Bath	14'4" x 16'1"	179 sq. ft	Yes
27	Open To Below	9'11" x 10'1"	84 sq. ft	No
28	Hall	10'5" x 6'11"	134 sq. ft	Yes
29	Bath	6'1" x 3'9"	23 sq. ft	Yes
30	Bath	5'8" x 8'8"	49 sq. ft	Yes
31	W.I.C.	6'6" x 6'5"	42 sq. ft	Yes
32	Laundry	5'0" x 10'4"	49 sq. ft	Yes

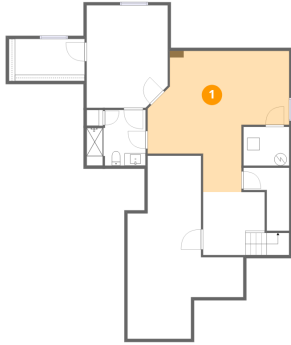
Home data report

**3919 Desert Ridge Cir, Castle Rock, CO, US**

#		Dimensions	sqft	Counted as living area
33	Bedroom	13'3" x 12'2"	161 sq. ft	Yes
34	Utility	3'3" x 3'9"	12 sq. ft	No
35	Bedroom	11'4" x 12'10"	146 sq. ft	Yes
36	Primary Bedroom	14'11" x 19'2"	283 sq. ft	Yes
37	Bedroom	12'9" x 17'11"	196 sq. ft	Yes
38	Bath	5'7" x 3'4"	18 sq. ft	Yes

## 1 Floor 1 - Recreation Room

---

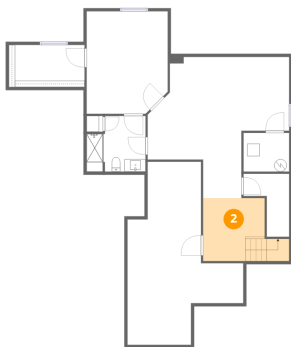


Dimensions: 22'9" x 22'8"  
Area: 351 sq. ft  
Counted as living area: Yes

Heated: Yes  
Finished: Yes  
Enclosed: Yes  
Contiguous: Yes  
Permitted: Yes  
Wet space: No  
Addition: No  
Conversion: No

## 2 Floor 1 - Hall

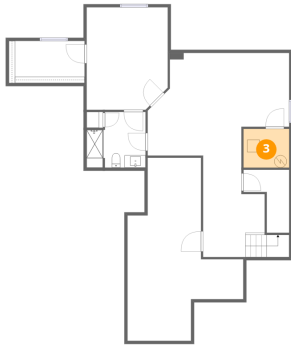
---



Dimensions: 9'10" x 10'1"  
Area: 114 sq. ft  
Counted as living area: Yes

Heated: Yes  
Finished: Yes  
Enclosed: Yes  
Contiguous: Yes  
Permitted: Yes  
Wet space: No  
Addition: No  
Conversion: No

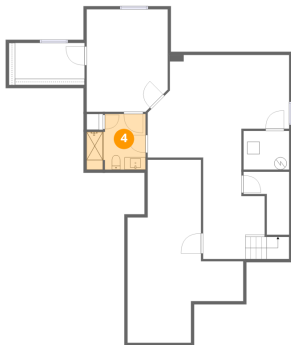
### 3 Floor 1 - Utility



Dimensions: 7'4" x 6'3"  
Area: 46 sq. ft  
Counted as living area: No

Heated: Yes  
Finished: No  
Enclosed: Yes  
Contiguous: Yes  
Permitted: Yes  
Wet space: No  
Addition: No  
Conversion: No

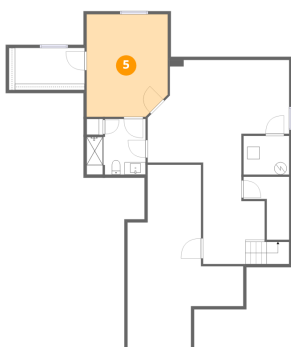
### 4 Floor 1 - Bath



Dimensions: 9'6" x 8'11"  
Area: 76 sq. ft  
Counted as living area: Yes

Heated: Yes  
Finished: Yes  
Enclosed: Yes  
Contiguous: Yes  
Permitted: Yes  
Wet space: Yes  
Addition: No  
Conversion: No

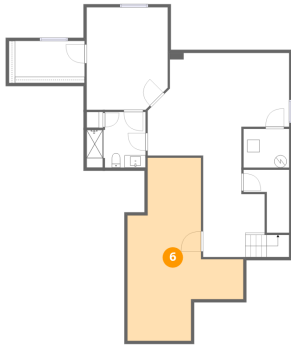
### 5 Floor 1 - Bedroom



Dimensions: 13'0" x 16'5"  
Area: 208 sq. ft  
Counted as living area: Yes

Heated: Yes  
Finished: Yes  
Enclosed: Yes  
Contiguous: Yes  
Permitted: Yes  
Wet space: No  
Addition: No  
Conversion: No

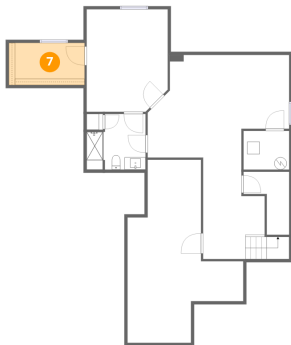
## 6 Floor 1 - Basement



Dimensions: 18'7" x 29'5"  
Area: 351 sq. ft  
Counted as living area: No

Heated: Yes  
Finished: No  
Enclosed: Yes  
Contiguous: Yes  
Permitted: Yes  
Wet space: No  
Addition: No  
Conversion: No

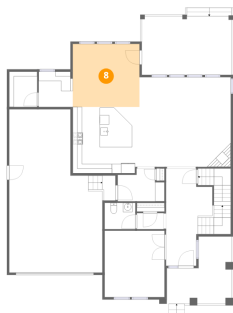
## 7 Floor 1 - W.I.C.



Dimensions: 12'2" x 6'9"  
Area: 82 sq. ft  
Counted as living area: Yes

Heated: Yes  
Finished: Yes  
Enclosed: Yes  
Contiguous: Yes  
Permitted: Yes  
Wet space: No  
Addition: No  
Conversion: No

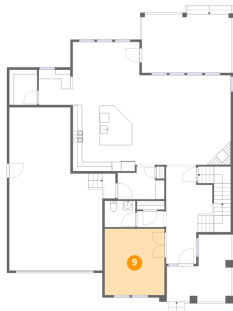
## 8 Floor 2 - Dining Area



Dimensions: 14'3" x 13'6"  
Area: 192 sq. ft  
Counted as living area: Yes

Heated: Yes  
Finished: Yes  
Enclosed: Yes  
Contiguous: Yes  
Permitted: Yes  
Wet space: No  
Addition: No  
Conversion: No

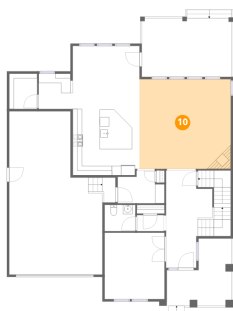
### 9 Floor 2 - Office



Dimensions: 12'9" x 14'2"  
Area: 181 sq. ft  
Counted as living area: Yes

Heated: Yes  
Finished: Yes  
Enclosed: Yes  
Contiguous: Yes  
Permitted: Yes  
Wet space: No  
Addition: No  
Conversion: No

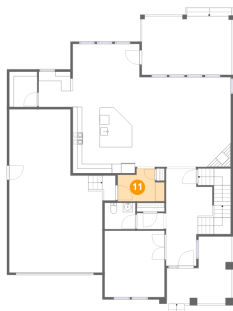
### 10 Floor 2 - Living Room



Dimensions: 19'6" x 19'2"  
Area: 374 sq. ft  
Counted as living area: Yes

Heated: Yes  
Finished: Yes  
Enclosed: Yes  
Contiguous: Yes  
Permitted: Yes  
Wet space: No  
Addition: No  
Conversion: No

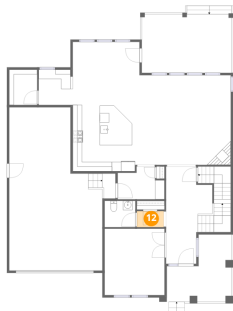
### 11 Floor 2 - Hall



Dimensions: 10'0" x 7'0"  
Area: 59 sq. ft  
Counted as living area: Yes

Heated: Yes  
Finished: Yes  
Enclosed: Yes  
Contiguous: Yes  
Permitted: Yes  
Wet space: No  
Addition: No  
Conversion: No

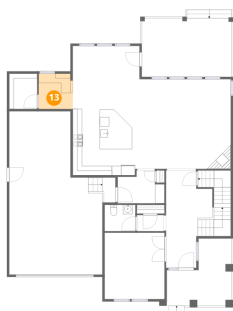
**12** Floor 2 - Hall



Dimensions: 5'9" x 3'5"  
Area: 20 sq. ft  
Counted as living area: Yes

Heated: Yes  
Finished: Yes  
Enclosed: Yes  
Contiguous: Yes  
Permitted: Yes  
Wet space: No  
Addition: No  
Conversion: No

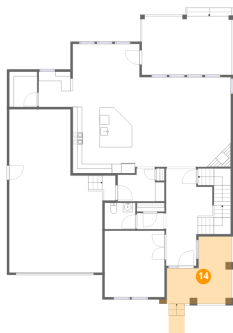
**13** Floor 2 - Hall



Dimensions: 7'3" x 7'7"  
Area: 54 sq. ft  
Counted as living area: Yes

Heated: Yes  
Finished: Yes  
Enclosed: Yes  
Contiguous: Yes  
Permitted: Yes  
Wet space: No  
Addition: No  
Conversion: No

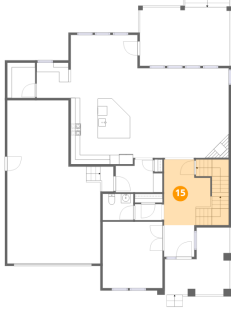
**14** Floor 2 - Porch



Dimensions: 13'10" x 14'5"  
Area: 177 sq. ft  
Counted as living area: No

Heated: No  
Finished: No  
Enclosed: No  
Contiguous: Yes  
Permitted: Yes  
Wet space: No  
Addition: No  
Conversion: No

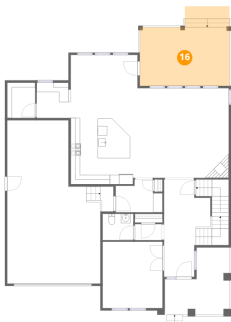
**15** Floor 2 - Hall



Dimensions: 9'11" x 14'0"  
Area: 190 sq. ft  
Counted as living area: Yes

Heated: Yes  
Finished: Yes  
Enclosed: Yes  
Contiguous: Yes  
Permitted: Yes  
Wet space: No  
Addition: No  
Conversion: No

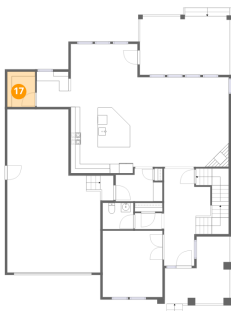
**16** Floor 2 - Covered Deck



Dimensions: 19'2" x 12'6"  
Area: 283 sq. ft  
Counted as living area: No

Heated: No  
Finished: No  
Enclosed: No  
Contiguous: Yes  
Permitted: Yes  
Wet space: No  
Addition: No  
Conversion: No

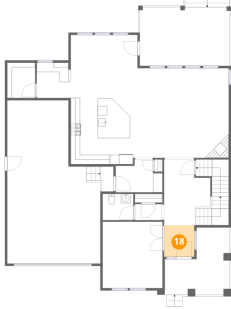
**17** Floor 2 - Pantry



Dimensions: 6'0" x 7'7"  
Area: 45 sq. ft  
Counted as living area: Yes

Heated: Yes  
Finished: Yes  
Enclosed: Yes  
Contiguous: Yes  
Permitted: Yes  
Wet space: No  
Addition: No  
Conversion: No

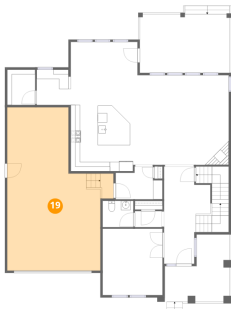
**18** Floor 2 - Foyer



Dimensions: 6'6" x 6'9"  
Area: 44 sq. ft  
Counted as living area: No

Heated: Yes  
Finished: Yes  
Enclosed: Yes  
Contiguous: No  
Permitted: Yes  
Wet space: No  
Addition: No  
Conversion: No

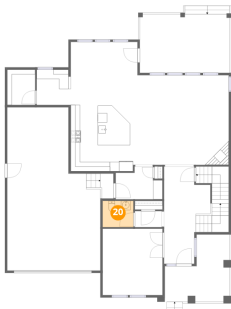
**19** Floor 2 - Garage



Dimensions: 19'11" x 34'11"  
Area: 612 sq. ft  
Counted as living area: No

Heated: No  
Finished: No  
Enclosed: Yes  
Contiguous: Yes  
Permitted: Yes  
Wet space: No  
Addition: No  
Conversion: No

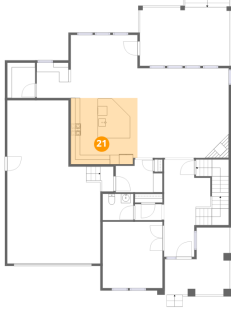
**20** Floor 2 - Bath



Dimensions: 6'7" x 5'8"  
Area: 37 sq. ft  
Counted as living area: Yes

Heated: Yes  
Finished: Yes  
Enclosed: Yes  
Contiguous: Yes  
Permitted: Yes  
Wet space: Yes  
Addition: No  
Conversion: No

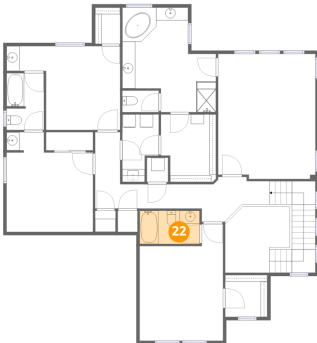
## 21 Floor 2 - Kitchen



Dimensions: 14'3" x 14'2"  
Area: 201 sq. ft  
Counted as living area: Yes

Heated: Yes  
Finished: Yes  
Enclosed: Yes  
Contiguous: Yes  
Permitted: Yes  
Wet space: No  
Addition: No  
Conversion: No

## 22 Floor 3 - Bath



Dimensions: 9'2" x 5'1"  
Area: 47 sq. ft  
Counted as living area: Yes

Heated: Yes  
Finished: Yes  
Enclosed: Yes  
Contiguous: Yes  
Permitted: Yes  
Wet space: Yes  
Addition: No  
Conversion: No

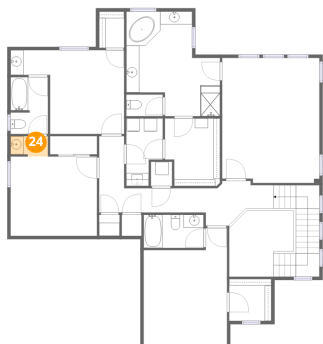
## 23 Floor 3 - W.I.C.



Dimensions: 8'5" x 10'4"  
Area: 82 sq. ft  
Counted as living area: Yes

Heated: Yes  
Finished: Yes  
Enclosed: Yes  
Contiguous: Yes  
Permitted: Yes  
Wet space: No  
Addition: No  
Conversion: No

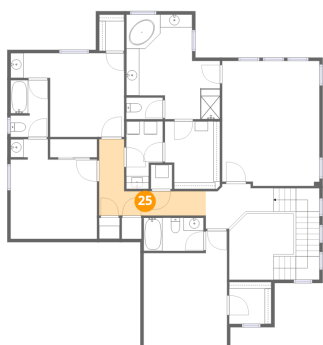
**24** Floor 3 - Bath



Dimensions: 5'9" x 3'1"  
Area: 17 sq. ft  
Counted as living area: Yes

Heated: Yes  
Finished: Yes  
Enclosed: Yes  
Contiguous: Yes  
Permitted: Yes  
Wet space: Yes  
Addition: No  
Conversion: No

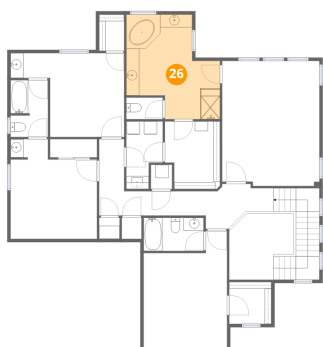
**25** Floor 3 - Hall



Dimensions: 16'4" x 11'8"  
Area: 92 sq. ft  
Counted as living area: Yes

Heated: Yes  
Finished: Yes  
Enclosed: Yes  
Contiguous: Yes  
Permitted: Yes  
Wet space: No  
Addition: No  
Conversion: No

**26** Floor 3 - Primary Bath



Dimensions: 14'4" x 16'1"  
Area: 179 sq. ft  
Counted as living area: Yes

Heated: Yes  
Finished: Yes  
Enclosed: Yes  
Contiguous: Yes  
Permitted: Yes  
Wet space: Yes  
Addition: No  
Conversion: No

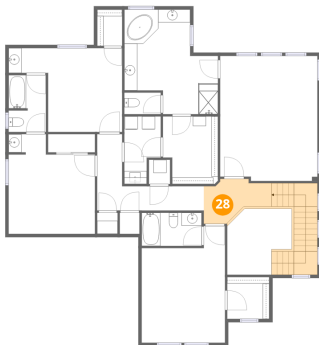
### 27 Floor 3 - Open To Below



Dimensions: 9'11" x 10'1"  
Area: 84 sq. ft  
Counted as living area: No

Heated: No  
Finished: No  
Enclosed: No  
Contiguous: Yes  
Permitted: No  
Wet space: No  
Addition: No  
Conversion: No

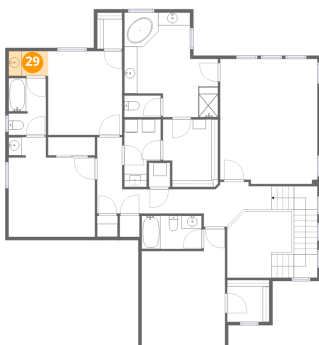
### 28 Floor 3 - Hall



Dimensions: 10'5" x 6'11"  
Area: 134 sq. ft  
Counted as living area: Yes

Heated: Yes  
Finished: Yes  
Enclosed: Yes  
Contiguous: Yes  
Permitted: Yes  
Wet space: No  
Addition: No  
Conversion: No

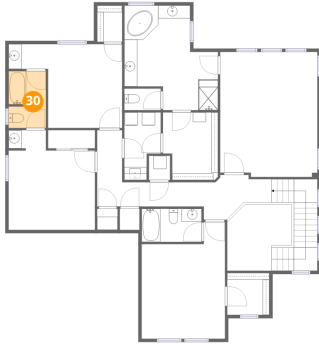
### 29 Floor 3 - Bath



Dimensions: 6'1" x 3'9"  
Area: 23 sq. ft  
Counted as living area: Yes

Heated: Yes  
Finished: Yes  
Enclosed: Yes  
Contiguous: Yes  
Permitted: Yes  
Wet space: Yes  
Addition: No  
Conversion: No

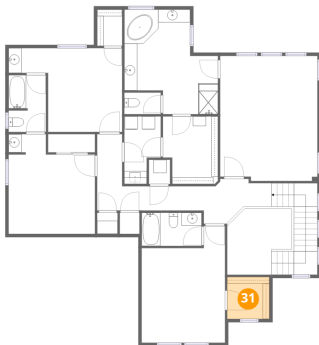
**30** Floor 3 - Bath



Dimensions: 5'8" x 8'8"  
Area: 49 sq. ft  
Counted as living area: Yes

Heated: Yes  
Finished: Yes  
Enclosed: Yes  
Contiguous: Yes  
Permitted: Yes  
Wet space: Yes  
Addition: No  
Conversion: No

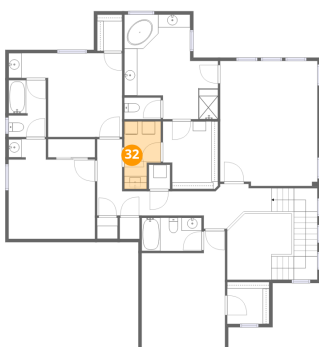
**31** Floor 3 - W.I.C.



Dimensions: 6'6" x 6'5"  
Area: 42 sq. ft  
Counted as living area: Yes

Heated: Yes  
Finished: Yes  
Enclosed: Yes  
Contiguous: Yes  
Permitted: Yes  
Wet space: No  
Addition: No  
Conversion: No

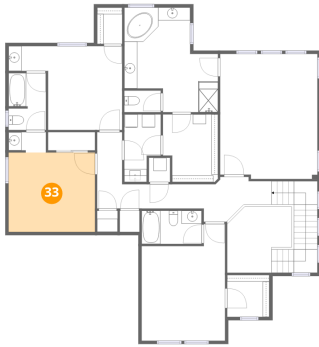
**32** Floor 3 - Laundry



Dimensions: 5'0" x 10'4"  
Area: 49 sq. ft  
Counted as living area: Yes

Heated: Yes  
Finished: Yes  
Enclosed: Yes  
Contiguous: Yes  
Permitted: Yes  
Wet space: No  
Addition: No  
Conversion: No

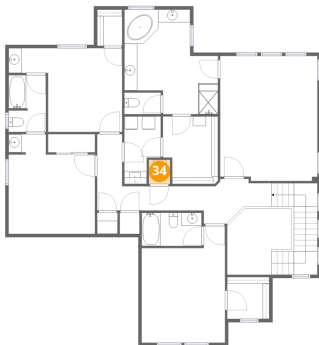
**33** Floor 3 - Bedroom



Dimensions: 13'3" x 12'2"  
Area: 161 sq. ft  
Counted as living area: Yes

Heated: Yes  
Finished: Yes  
Enclosed: Yes  
Contiguous: Yes  
Permitted: Yes  
Wet space: No  
Addition: No  
Conversion: No

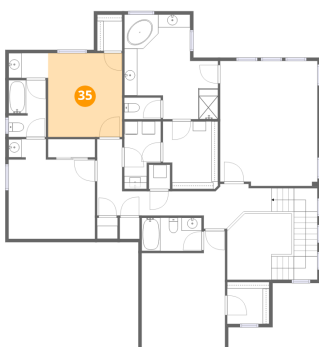
**34** Floor 3 - Utility



Dimensions: 3'3" x 3'9"  
Area: 12 sq. ft  
Counted as living area: No

Heated: Yes  
Finished: No  
Enclosed: Yes  
Contiguous: Yes  
Permitted: Yes  
Wet space: No  
Addition: No  
Conversion: No

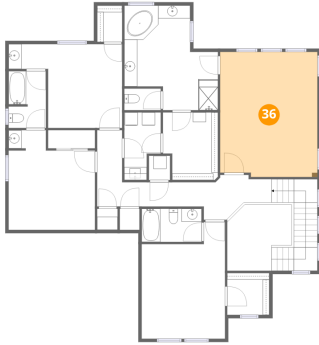
**35** Floor 3 - Bedroom



Dimensions: 11'4" x 12'10"  
Area: 146 sq. ft  
Counted as living area: Yes

Heated: Yes  
Finished: Yes  
Enclosed: Yes  
Contiguous: Yes  
Permitted: Yes  
Wet space: No  
Addition: No  
Conversion: No

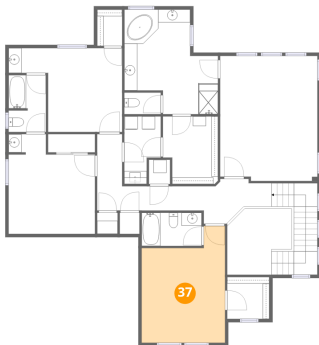
### 36 Floor 3 - Primary Bedroom



Dimensions: 14'11" x 19'2"  
Area: 283 sq. ft  
Counted as living area: Yes

Heated: Yes  
Finished: Yes  
Enclosed: Yes  
Contiguous: Yes  
Permitted: Yes  
Wet space: No  
Addition: No  
Conversion: No

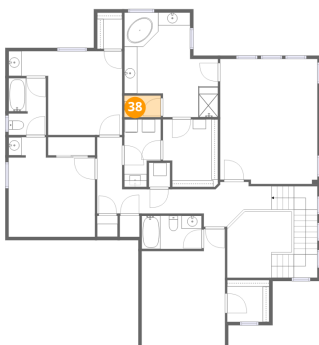
### 37 Floor 3 - Bedroom



Dimensions: 12'9" x 17'11"  
Area: 196 sq. ft  
Counted as living area: Yes

Heated: Yes  
Finished: Yes  
Enclosed: Yes  
Contiguous: Yes  
Permitted: Yes  
Wet space: No  
Addition: No  
Conversion: No

### 38 Floor 3 - Bath



Dimensions: 5'7" x 3'4"  
Area: 18 sq. ft  
Counted as living area: Yes

Heated: Yes  
Finished: Yes  
Enclosed: Yes  
Contiguous: Yes  
Permitted: Yes  
Wet space: Yes  
Addition: No  
Conversion: No