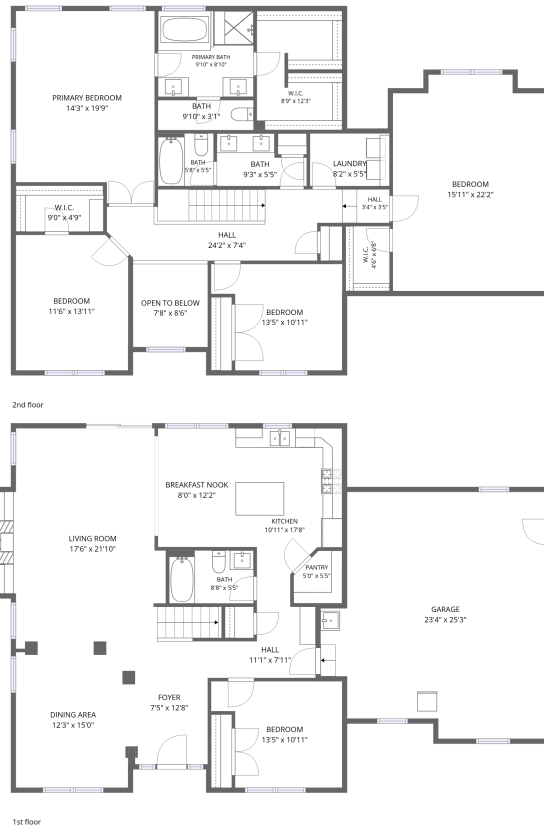


Home data report

2111 Fieldbrook Pl, Suffolk, VA, US



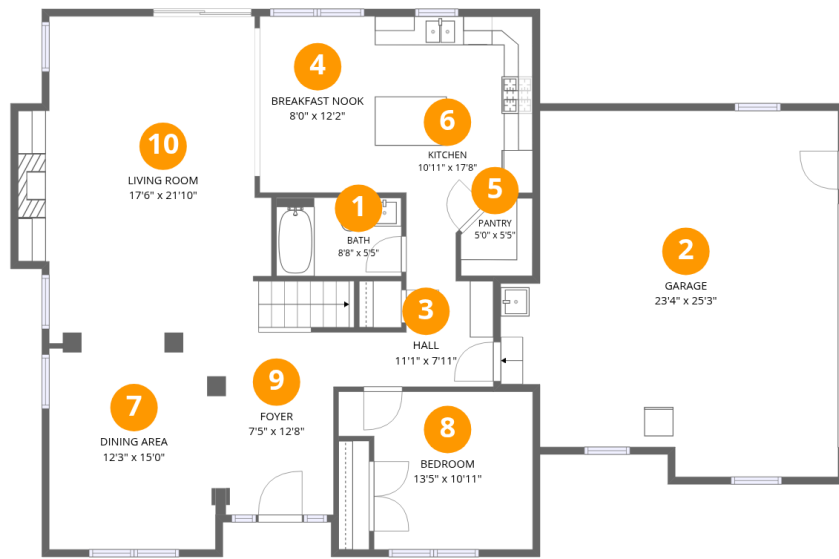
Total Area: 2783 sq. ft

1st Floor: 1214 sq. ft, 2nd Floor: 1569 sq. ft

Excluded: Garage 522 sq. ft, Open to below 68 sq. ft, Walls: 214 sq. ft

Property summary





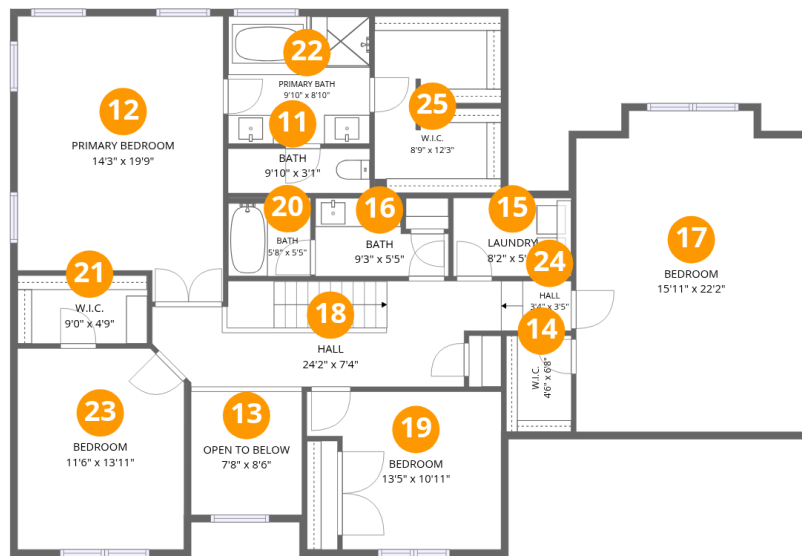
Room dimensions

Floor 1

Total:1214sqft

Excluded: 522sqft

#		Dimensions	sqft	Counted as living area
1	Bath	8'8" x 5'5"	47 sq. ft	Yes
2	Garage	23'4" x 25'3"	522 sq. ft	No
3	Hall	11'1" x 7'11"	65 sq. ft	Yes
4	Breakfast Nook	8'0" x 12'2"	97 sq. ft	Yes
5	Pantry	5'0" x 5'5"	24 sq. ft	Yes
6	Kitchen	10'11" x 17'8"	156 sq. ft	Yes
7	Dining Area	12'3" x 15'0"	177 sq. ft	Yes
8	Bedroom	13'5" x 10'11"	127 sq. ft	Yes
9	Foyer	7'5" x 12'8"	99 sq. ft	Yes
10	Living Room	17'6" x 21'10"	363 sq. ft	Yes



Room dimensions

Floor 2

Total: 1569 sqft

Excluded: 68 sqft

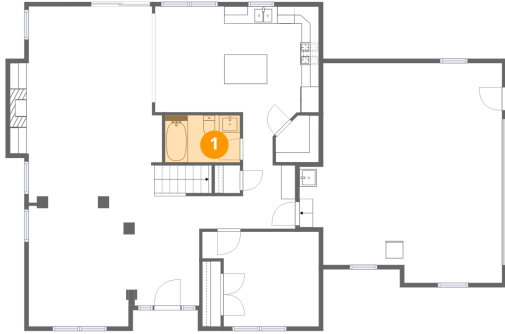
#		Dimensions	sqft	Counted as living area
11	Bath	9'10" x 3'1"	30 sq. ft	Yes
12	Primary Bedroom	14'3" x 19'9"	261 sq. ft	Yes
13	Open To Below	7'8" x 8'6"	68 sq. ft	No
14	W.I.C.	4'6" x 6'8"	30 sq. ft	Yes
15	Laundry	8'2" x 5'5"	44 sq. ft	Yes
16	Bath	9'3" x 5'5"	42 sq. ft	Yes
17	Bedroom	15'11" x 22'2"	340 sq. ft	Yes
18	Hall	24'2" x 7'4"	158 sq. ft	Yes
19	Bedroom	13'5" x 10'11"	128 sq. ft	Yes
20	Bath	5'8" x 5'5"	31 sq. ft	Yes
21	W.I.C.	9'0" x 4'9"	42 sq. ft	Yes

Home data report

2111 Fieldbrook Pl,Suffolk,VA,US

#		Dimensions	sqft	Counted as living area
22	Primary Bath	9'10" x 8'10"	86 sq. ft	Yes
23	Bedroom	11'6" x 13'11"	159 sq. ft	Yes
24	Hall	3'4" x 3'5"	12 sq. ft	Yes
25	W.I.C.	8'9" x 12'3"	104 sq. ft	Yes

1 Floor 1 - Bath



Dimensions: 8'8" x 5'5"
Area: 47 sq. ft
Counted as living area: Yes

Heated: Yes
Finished: Yes
Enclosed: Yes
Contiguous: Yes
Permitted: Yes
Wet space: Yes
Addition: No
Conversion: No

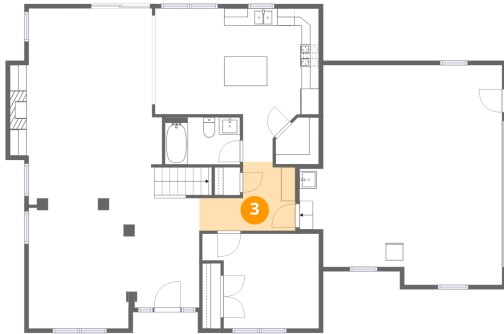
2 Floor 1 - Garage



Dimensions: 23'4" x 25'3"
Area: 522 sq. ft
Counted as living area: No

Heated: No
Finished: No
Enclosed: Yes
Contiguous: Yes
Permitted: Yes
Wet space: No
Addition: No
Conversion: No

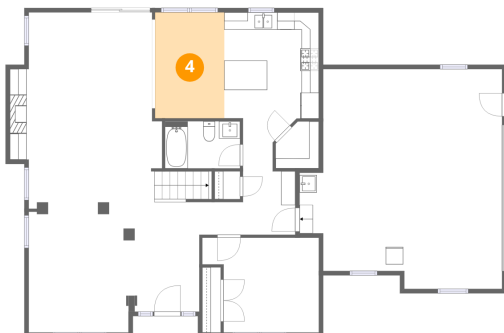
3 Floor 1 - Hall



Dimensions: 11'1" x 7'11"
Area: 65 sq. ft
Counted as living area: Yes

Heated: Yes
Finished: Yes
Enclosed: Yes
Contiguous: Yes
Permitted: Yes
Wet space: No
Addition: No
Conversion: No

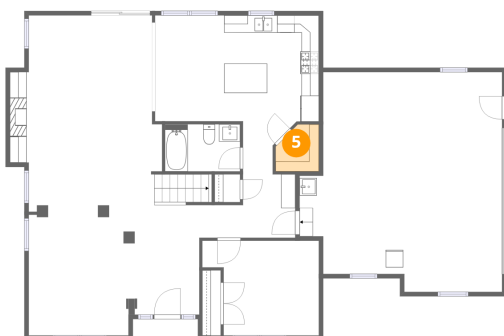
4 Floor 1 - Breakfast Nook



Dimensions: 8'0" x 12'2"
Area: 97 sq. ft
Counted as living area: Yes

Heated: Yes
Finished: Yes
Enclosed: Yes
Contiguous: Yes
Permitted: Yes
Wet space: No
Addition: No
Conversion: No

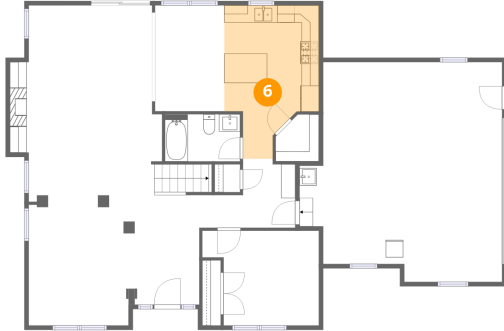
5 Floor 1 - Pantry



Dimensions: 5'0" x 5'5"
Area: 24 sq. ft
Counted as living area: Yes

Heated: Yes
Finished: Yes
Enclosed: Yes
Contiguous: Yes
Permitted: Yes
Wet space: No
Addition: No
Conversion: No

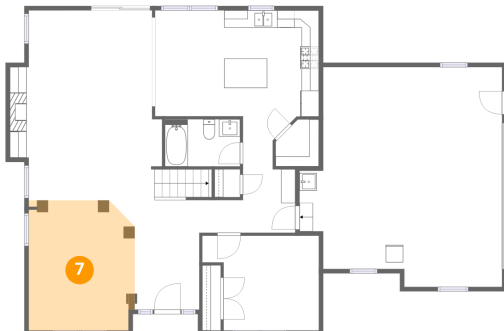
6 Floor 1 - Kitchen



Dimensions: 10'11" x 17'8"
Area: 156 sq. ft
Counted as living area: Yes

Heated: Yes
Finished: Yes
Enclosed: Yes
Contiguous: Yes
Permitted: Yes
Wet space: No
Addition: No
Conversion: No

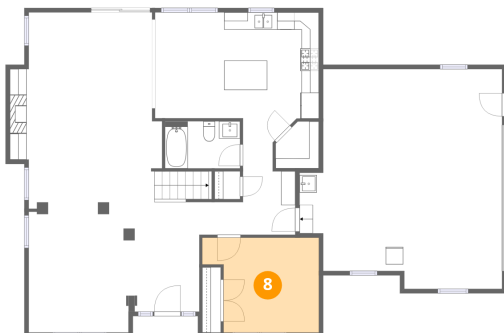
7 Floor 1 - Dining Area



Dimensions: 12'3" x 15'0"
Area: 177 sq. ft
Counted as living area: Yes

Heated: Yes
Finished: Yes
Enclosed: Yes
Contiguous: Yes
Permitted: Yes
Wet space: No
Addition: No
Conversion: No

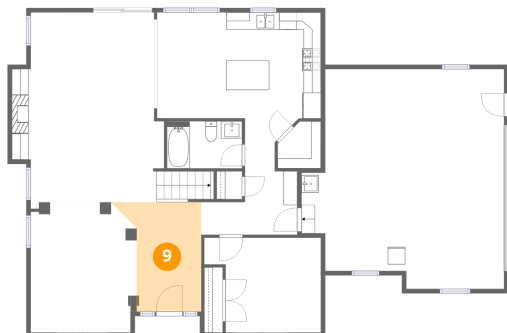
8 Floor 1 - Bedroom



Dimensions: 13'5" x 10'11"
Area: 127 sq. ft
Counted as living area: Yes

Heated: Yes
Finished: Yes
Enclosed: Yes
Contiguous: Yes
Permitted: Yes
Wet space: No
Addition: No
Conversion: No

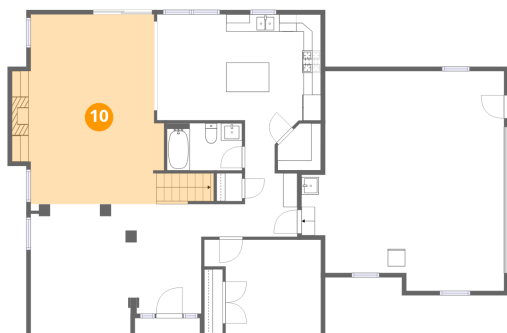
9 Floor 1 - Foyer



Dimensions: 7'5" x 12'8"
Area: 99 sq. ft
Counted as living area: Yes

Heated: Yes
Finished: Yes
Enclosed: Yes
Contiguous: Yes
Permitted: Yes
Wet space: No
Addition: No
Conversion: No

10 Floor 1 - Living Room



Dimensions: 17'6" x 21'10"
Area: 363 sq. ft
Counted as living area: Yes

Heated: Yes
Finished: Yes
Enclosed: Yes
Contiguous: Yes
Permitted: Yes
Wet space: No
Addition: No
Conversion: No

11 Floor 2 - Bath



Dimensions: 9'10" x 3'1"
Area: 30 sq. ft
Counted as living area: Yes

Heated: Yes
Finished: Yes
Enclosed: Yes
Contiguous: Yes
Permitted: Yes
Wet space: Yes
Addition: No
Conversion: No

12 Floor 2 - Primary Bedroom



Dimensions: 14'3" x 19'9"
Area: 261 sq. ft
Counted as living area: Yes

Heated: Yes
Finished: Yes
Enclosed: Yes
Contiguous: Yes
Permitted: Yes
Wet space: No
Addition: No
Conversion: No

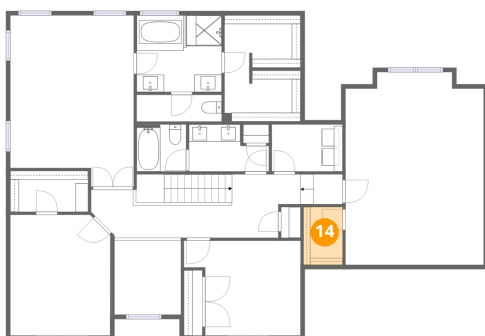
13 Floor 2 - Open To Below



Dimensions: 7'8" x 8'6"
Area: 68 sq. ft
Counted as living area: No

Heated: No
Finished: No
Enclosed: No
Contiguous: Yes
Permitted: No
Wet space: No
Addition: No
Conversion: No

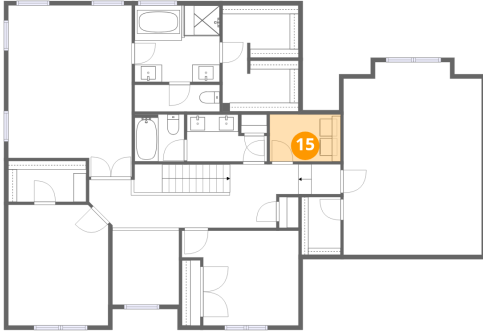
14 Floor 2 - W.I.C.



Dimensions: 4'6" x 6'8"
Area: 30 sq. ft
Counted as living area: Yes

Heated: Yes
Finished: Yes
Enclosed: Yes
Contiguous: Yes
Permitted: Yes
Wet space: No
Addition: No
Conversion: No

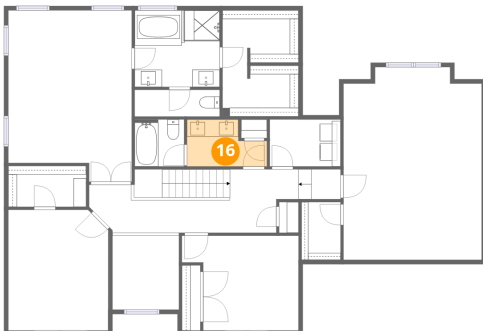
15 Floor 2 - Laundry



Dimensions: 8'2" x 5'5"
Area: 44 sq. ft
Counted as living area: Yes

Heated: Yes
Finished: Yes
Enclosed: Yes
Contiguous: Yes
Permitted: Yes
Wet space: No
Addition: No
Conversion: No

16 Floor 2 - Bath



Dimensions: 9'3" x 5'5"
Area: 42 sq. ft
Counted as living area: Yes

Heated: Yes
Finished: Yes
Enclosed: Yes
Contiguous: Yes
Permitted: Yes
Wet space: Yes
Addition: No
Conversion: No

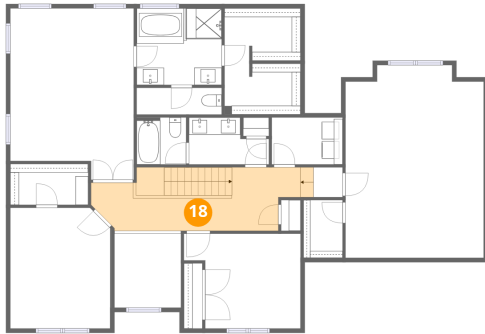
17 Floor 2 - Bedroom



Dimensions: 15'11" x 22'2"
Area: 340 sq. ft
Counted as living area: Yes

Heated: Yes
Finished: Yes
Enclosed: Yes
Contiguous: Yes
Permitted: Yes
Wet space: No
Addition: No
Conversion: No

18 Floor 2 - Hall



Dimensions: 24'2" x 7'4"
Area: 158 sq. ft
Counted as living area: Yes

Heated: Yes
Finished: Yes
Enclosed: Yes
Contiguous: Yes
Permitted: Yes
Wet space: No
Addition: No
Conversion: No

19 Floor 2 - Bedroom



Dimensions: 13'5" x 10'11"
Area: 128 sq. ft
Counted as living area: Yes

Heated: Yes
Finished: Yes
Enclosed: Yes
Contiguous: Yes
Permitted: Yes
Wet space: No
Addition: No
Conversion: No

20 Floor 2 - Bath



Dimensions: 5'8" x 5'5"
Area: 31 sq. ft
Counted as living area: Yes

Heated: Yes
Finished: Yes
Enclosed: Yes
Contiguous: Yes
Permitted: Yes
Wet space: Yes
Addition: No
Conversion: No

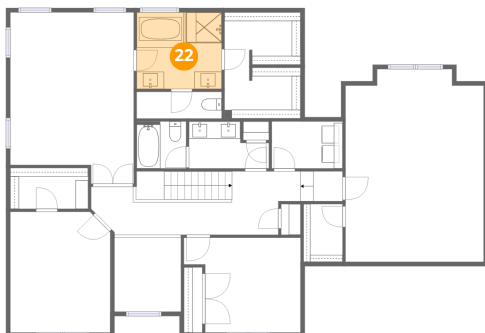
21 Floor 2 - W.I.C.



Dimensions: 9'0" x 4'9"
Area: 42 sq. ft
Counted as living area: Yes

Heated: Yes
Finished: Yes
Enclosed: Yes
Contiguous: Yes
Permitted: Yes
Wet space: No
Addition: No
Conversion: No

22 Floor 2 - Primary Bath



Dimensions: 9'10" x 8'10"
Area: 86 sq. ft
Counted as living area: Yes

Heated: Yes
Finished: Yes
Enclosed: Yes
Contiguous: Yes
Permitted: Yes
Wet space: Yes
Addition: No
Conversion: No

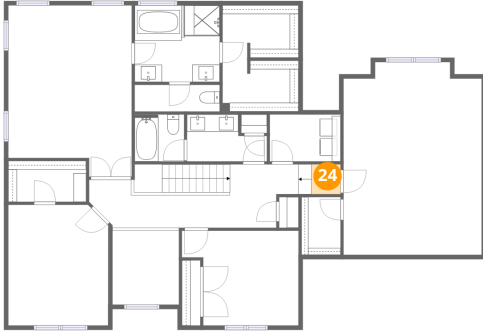
23 Floor 2 - Bedroom



Dimensions: 11'6" x 13'11"
Area: 159 sq. ft
Counted as living area: Yes

Heated: Yes
Finished: Yes
Enclosed: Yes
Contiguous: Yes
Permitted: Yes
Wet space: No
Addition: No
Conversion: No

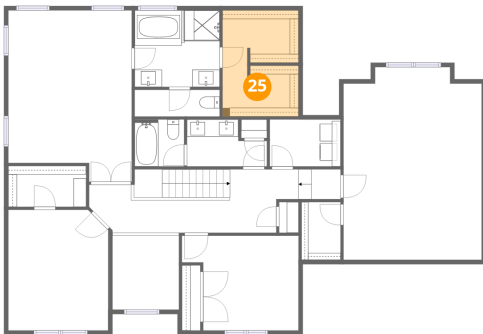
24 Floor 2 - Hall



Dimensions: 3'4" x 3'5"
Area: 12 sq. ft
Counted as living area: Yes

Heated: Yes
Finished: Yes
Enclosed: Yes
Contiguous: Yes
Permitted: Yes
Wet space: No
Addition: No
Conversion: No

25 Floor 2 - W.I.C.



Dimensions: 8'9" x 12'3"
Area: 104 sq. ft
Counted as living area: Yes

Heated: Yes
Finished: Yes
Enclosed: Yes
Contiguous: Yes
Permitted: Yes
Wet space: No
Addition: No
Conversion: No