

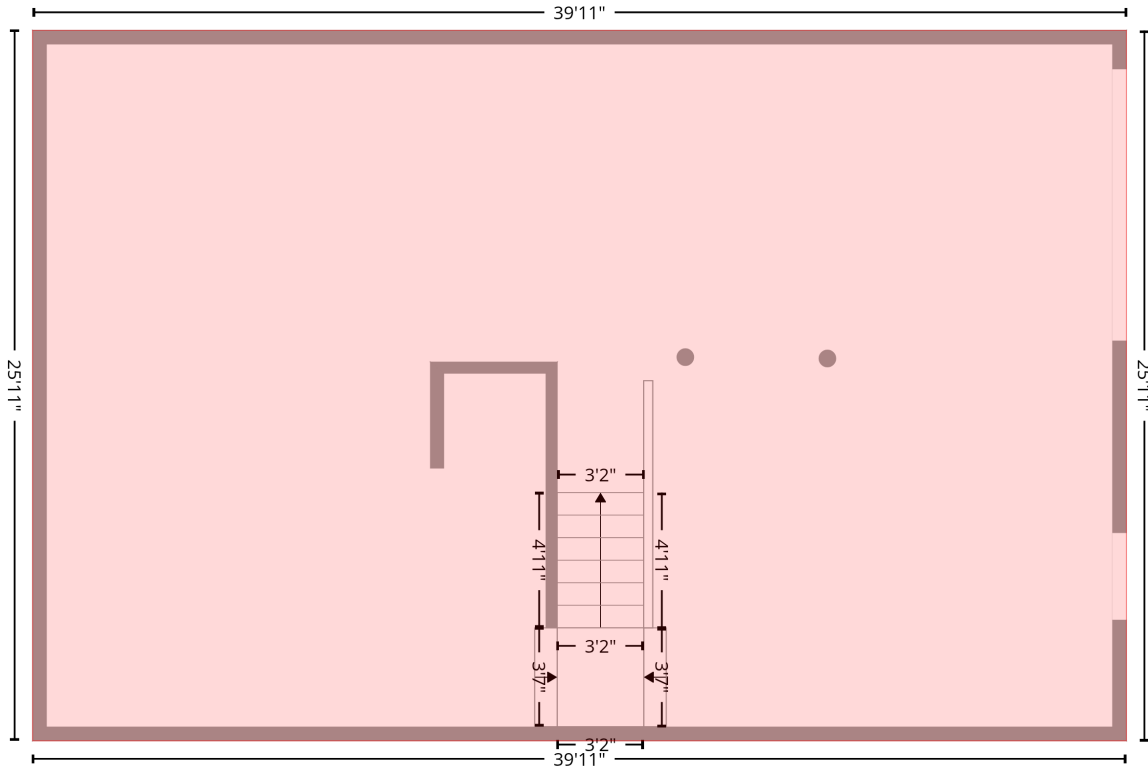
4455 Magnolia Ln, Hudson, NC, US

Gross Living Area: 1744 sq. ft

Level 1

1st floor
[AREA: 0]

GARAGE (1)
[AREA: 1033]



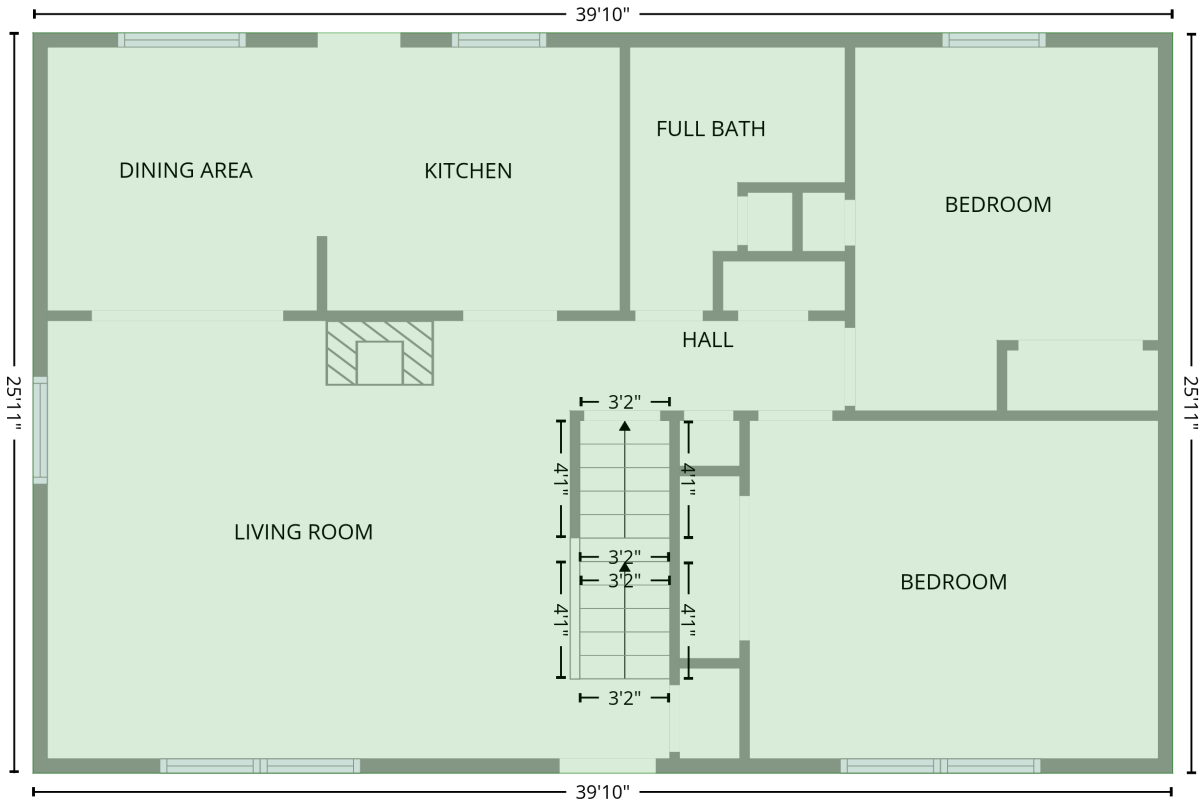
Space	Area (sq. ft)	Calculation <small>Coordinate Polygon Area Algorithm using inches</small>
GARAGE (Non-living area)	1033	$-((481.6 + 481.6) * (41.2 - 352) + (481.6 + 3.1) * (352 - 352) + (3.1 + 3.1) * (352 - 41.2) + (3.1 + 481.6) * (41.2 - 41.2)) * 0.5 * 0.00694$

4455 Magnolia Ln, Hudson, NC, US

Gross Living Area: 1744 sq. ft

Level 2

2nd floor
[AREA: 1032]



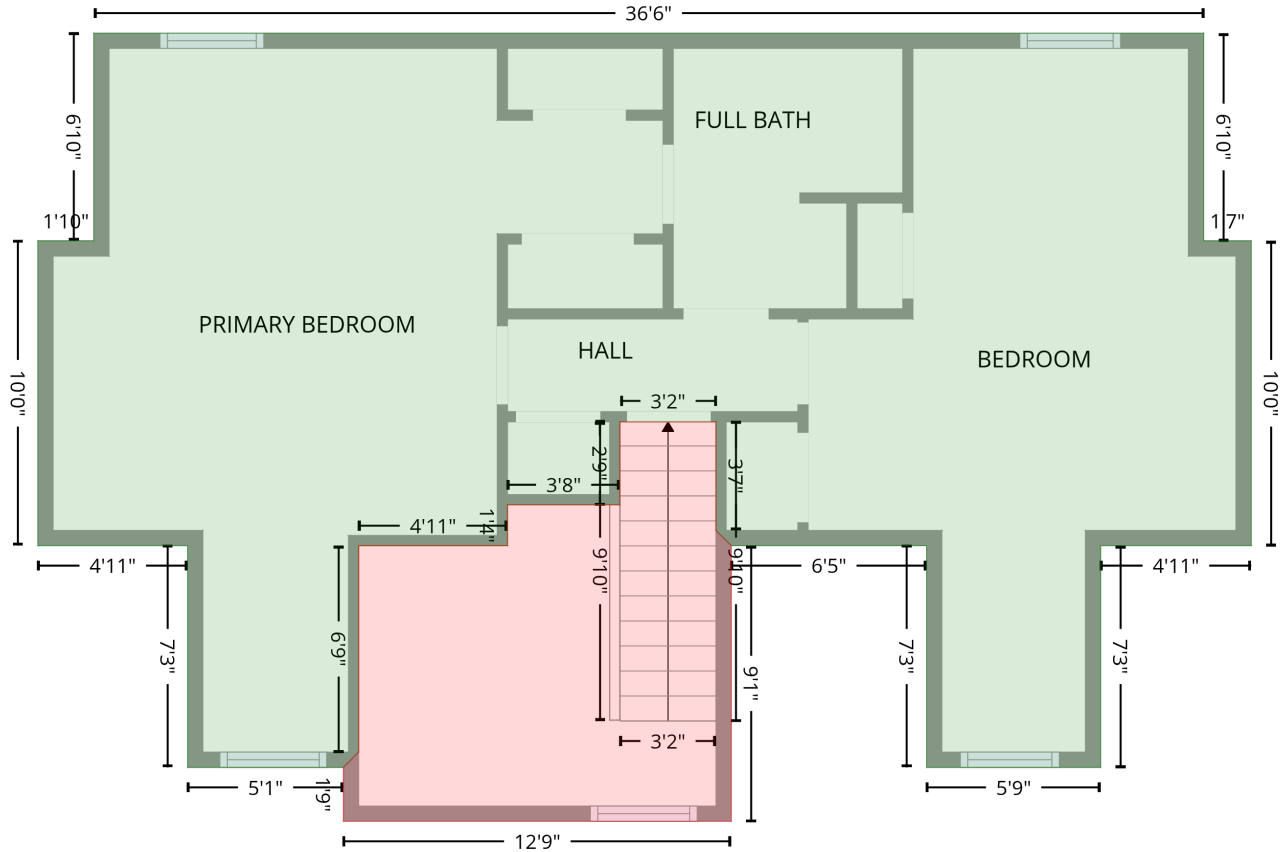
Space	Area (sq. ft)	Calculation <small>Coordinate Polygon Area Algorithm using inches</small>
2nd floor (Living area)	1032	$-((481.5 + 481.5) * (41.2 - 352) + (481.5 + 3.1) * (352 - 352) + (3.1 + 3.1) * (352 - 41.2) + (3.1 + 481.5) * (41.2 - 41.2)) * 0.5 * 0.00694$

4455 Magnolia Ln, Hudson, NC, US

Gross Living Area: 1744 sq. ft

Level 3

3rd floor
[AREA: 712]



OPEN TO BELOW (1)
[AREA: 130]

Space	Area (sq. ft)	Calculation <small>Coordinate Polygon Area Algorithm using inches</small>
3rd floor (Living area)	712	$-(462.6 + 462.6) * (41.2 - 123.1) + (462.6 + 481.4) * (123.1 - 123.1) + (481.4 + 481.4) * (123.1 - 243.3) + (481.4 + 422) * (243.3 - 243.3) + (422 + 422) * (243.3 - 330.7) + (422 + 353.4) * (330.7 - 330.7) + (353.4 + 353.4) * (330.7 - 243.3) + (353.4 + 276.4) * (243.3 - 243.3) + (276.4 + 270.4) * (243.3 - 237.3) + (270.4 + 270.4) * (237.3 - 194.5) + (270.4 + 232.5) * (194.5 - 194.5) + (232.5 + 232.5) * (194.5 - 227.2) + (232.5 + 188.2) * (227.2 - 227.2) + (188.2 + 188.2) * (227.2 - 243.3) + (188.2 + 129.5) * (243.3 - 243.3) + (129.5 + 129.5) * (243.3 - 324.7) + (129.5 + 123.5) * (324.7 - 330.7) + (123.5 + 62.1) * (330.7 - 330.7) + (62.1 + 62.1) * (330.7 - 243.3) + (62.1 + 3.1) * (243.3 - 243.3) + (3.1 + 3.1) * (243.3 - 123.1) + (3.1 + 25.1) * (123.1 - 123.1) + (25.1 + 25.1) * (123.1 - 41.2) + (25.1 + 462.6) * (41.2 - 41.2) * 0.5 * 0.00694$
OPEN TO BELOW (Non-living area)	130	$-(270.4 + 270.4) * (194.5 - 237.3) + (270.4 + 276.4) * (237.3 - 243.3) + (276.4 + 276.4) * (243.3 - 352) + (276.4 + 123.5) * (352 - 352) + (123.5 + 123.5) * (352 - 330.7) + (123.5 + 129.5) * (330.7 - 324.7) + (129.5 + 129.5) * (324.7 - 243.3) + (129.5 + 188.2) * (243.3 - 243.3) + (188.2 + 188.2) * (243.3 - 227.2) + (188.2 + 232.5) * (227.2 - 227.2) + (232.5 + 232.5) * (227.2 - 194.5) + (232.5 + 270.4) * (194.5 - 194.5) * 0.5 * 0.00694$