

Home data report

9 Winterport Ct,Richmond Hill,ON,CA




Total Area: 4563 sq. ft


Basement 1: 1358 sq. ft, 1st Floor: 1568 sq. ft, 2nd Floor: 1637 sq. ft

Excluded: Storage 56 sq. ft, Utility 212 sq. ft, Garage 359 sq. ft, Open to below 24 sq. ft, Walls: 300 sq. ft

Property summary

 **3** Floors

 **4** Bedrooms

 **4** Bathrooms

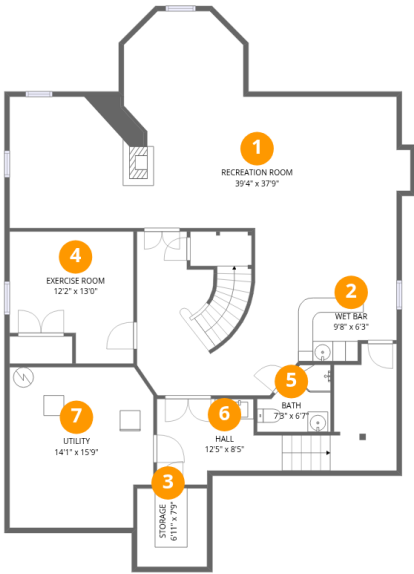
9 Winterport Ct,Richmond Hill,ON,CA

 **1**  
Half baths

 **1**  
Garages

Home data report

9 Winterport Ct,Richmond Hill,ON,CA



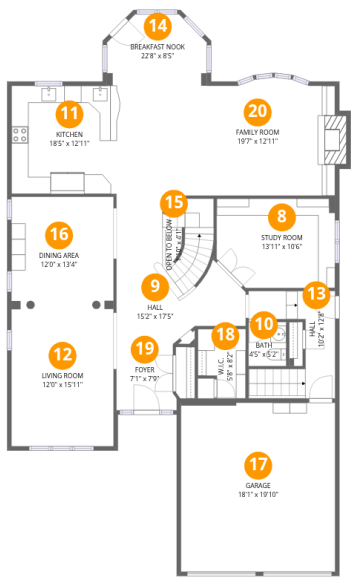
Room dimensions

Floor 1 Below grade Total:1358sqft Excluded: 268sqft

#		Dimensions	sqft	Counted as living area
1	Recreation Room	39'4" x 37'9"	1485 sq. ft	Yes
2	Wet Bar	9'8" x 6'3"	60 sq. ft	Yes
3	Storage	6'11" x 7'9"	54 sq. ft	No
4	Exercise Room	12'2" x 13'0"	158 sq. ft	Yes
5	Bath	7'3" x 6'7"	48 sq. ft	Yes
6	Hall	12'5" x 8'5"	104 sq. ft	Yes
7	Utility	14'1" x 15'9"	222 sq. ft	No

Home data report

9 Winterport Ct,Richmond Hill,ON,CA



Room dimensions

Floor 2 Total:1568sqft    Excluded: 366sqft

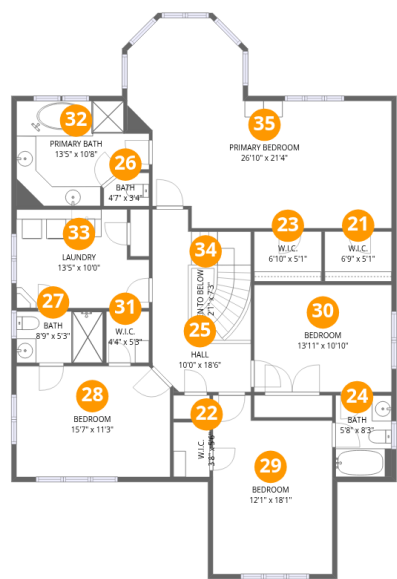
#		Dimensions	sqft	Counted as living area
8	Study Room	13'11" x 10'6"	146 sq. ft	Yes
9	Hall	15'2" x 17'5"	265 sq. ft	Yes
10	Bath	4'5" x 5'2"	23 sq. ft	Yes
11	Kitchen	18'5" x 12'11"	238 sq. ft	Yes
12	Living Room	12'0" x 15'11"	191 sq. ft	Yes
13	Hall	10'2" x 12'8"	128 sq. ft	Yes
14	Breakfast Nook	22'8" x 8'5"	190 sq. ft	Yes
15	Open To Below	1'10" x 4'1"	8 sq. ft	No
16	Dining Area	12'0" x 13'4"	160 sq. ft	Yes
17	Garage	18'1" x 19'10"	359 sq. ft	No
18	W.I.C.	5'8" x 8'2"	46 sq. ft	Yes

9 Winterport Ct,Richmond Hill,ON,CA

#		Dimensions	sqft	Counted as living area
19	Foyer	7'1" x 7'9"	55 sq. ft	Yes
20	Family Room	19'7" x 12'11"	252 sq. ft	Yes

Home data report

9 Winterport Ct,Richmond Hill,ON,CA



Room dimensions

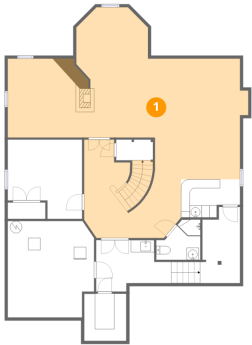
Floor 3 Total:1637sqft    Excluded: 17sqft

#		Dimensions	sqft	Counted as living area
21	W.I.C.	6'9" x 5'1"	34 sq. ft	Yes
22	W.I.C.	3'8" x 5'6"	20 sq. ft	Yes
23	W.I.C.	6'10" x 5'1"	35 sq. ft	Yes
24	Bath	5'8" x 8'3"	47 sq. ft	Yes
25	Hall	10'0" x 18'6"	185 sq. ft	Yes
26	Bath	4'7" x 3'4"	15 sq. ft	Yes
27	Bath	8'9" x 5'3"	46 sq. ft	Yes
28	Bedroom	15'7" x 11'3"	175 sq. ft	Yes
29	Bedroom	12'1" x 18'1"	219 sq. ft	Yes
30	Bedroom	13'11" x 10'10"	151 sq. ft	Yes
31	W.I.C.	4'4" x 5'3"	23 sq. ft	Yes

9 Winterport Ct,Richmond Hill,ON,CA

#		Dimensions	sqft	Counted as living area
32	Primary Bath	13'5" x 10'8"	143 sq. ft	Yes
33	Laundry	13'5" x 10'0"	134 sq. ft	Yes
34	Open To Below	2'1" x 7'3"	15 sq. ft	No
35	Primary Bedroom	26'10" x 21'4"	571 sq. ft	Yes

1 Floor 1 - Recreation Room



Dimensions: 39'4" x 37'9"  
Area: 1485 sq. ft  
Counted as living area: Yes

Heated: Yes  
Finished: Yes  
Enclosed: Yes  
Contiguous: Yes  
Permitted: Yes  
Wet space: No  
Addition: No  
Conversion: No

2 Floor 1 - Wet Bar



Dimensions: 9'8" x 6'3"  
Area: 60 sq. ft  
Counted as living area: Yes

Heated: Yes  
Finished: Yes  
Enclosed: Yes  
Contiguous: Yes  
Permitted: Yes  
Wet space: No  
Addition: No  
Conversion: No



### 3 Floor 1 - Storage



Dimensions: 6'11" x 7'9"  
Area: 54 sq. ft  
Counted as living area: No

Heated: No  
Finished: No  
Enclosed: No  
Contiguous: Yes  
Permitted: Yes  
Wet space: No  
Addition: No  
Conversion: No

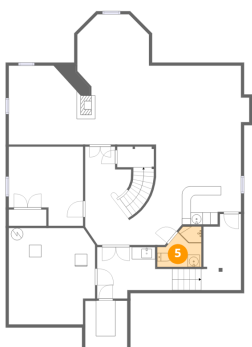
### 4 Floor 1 - Exercise Room



Dimensions: 12'2" x 13'0"  
Area: 158 sq. ft  
Counted as living area: Yes

Heated: Yes  
Finished: Yes  
Enclosed: Yes  
Contiguous: Yes  
Permitted: Yes  
Wet space: No  
Addition: No  
Conversion: No

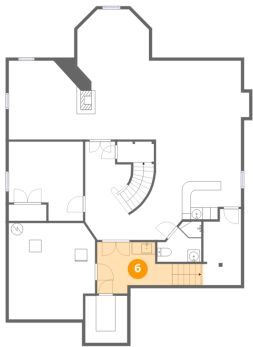
### 5 Floor 1 - Bath



Dimensions: 7'3" x 6'7"  
Area: 48 sq. ft  
Counted as living area: Yes

Heated: Yes  
Finished: Yes  
Enclosed: Yes  
Contiguous: Yes  
Permitted: Yes  
Wet space: Yes  
Addition: No  
Conversion: No

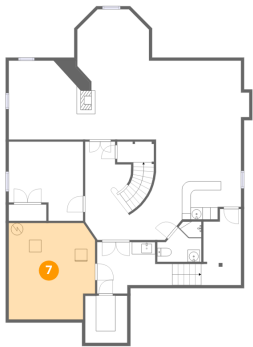
6 Floor 1 - Hall



Dimensions: 12'5" x 8'5"  
Area: 104 sq. ft  
Counted as living area: Yes

Heated: Yes  
Finished: Yes  
Enclosed: Yes  
Contiguous: Yes  
Permitted: Yes  
Wet space: No  
Addition: No  
Conversion: No

7 Floor 1 - Utility



Dimensions: 14'1" x 15'9"  
Area: 222 sq. ft  
Counted as living area: No

Heated: Yes  
Finished: No  
Enclosed: Yes  
Contiguous: Yes  
Permitted: Yes  
Wet space: No  
Addition: No  
Conversion: No

8 Floor 2 - Study Room



Dimensions: 13'11" x 10'6"  
Area: 146 sq. ft  
Counted as living area: Yes

Heated: Yes  
Finished: Yes  
Enclosed: Yes  
Contiguous: Yes  
Permitted: Yes  
Wet space: No  
Addition: No  
Conversion: No

## 9 Floor 2 - Hall



Dimensions: 15'2" x 17'5"  
Area: 265 sq. ft  
Counted as living area: Yes

Heated: Yes  
Finished: Yes  
Enclosed: Yes  
Contiguous: Yes  
Permitted: Yes  
Wet space: No  
Addition: No  
Conversion: No

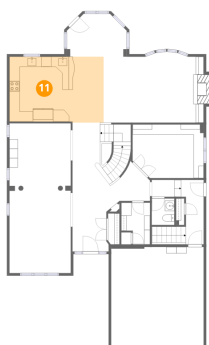
## 10 Floor 2 - Bath



Dimensions: 4'5" x 5'2"  
Area: 23 sq. ft  
Counted as living area: Yes

Heated: Yes  
Finished: Yes  
Enclosed: Yes  
Contiguous: Yes  
Permitted: Yes  
Wet space: Yes  
Addition: No  
Conversion: No

## 11 Floor 2 - Kitchen



Dimensions: 18'5" x 12'11"  
Area: 238 sq. ft  
Counted as living area: Yes

Heated: Yes  
Finished: Yes  
Enclosed: Yes  
Contiguous: Yes  
Permitted: Yes  
Wet space: No  
Addition: No  
Conversion: No

12 Floor 2 - Living Room



Dimensions: 12'0" x 15'11"  
Area: 191 sq. ft  
Counted as living area: Yes

Heated: Yes  
Finished: Yes  
Enclosed: Yes  
Contiguous: Yes  
Permitted: Yes  
Wet space: No  
Addition: No  
Conversion: No

13 Floor 2 - Hall



Dimensions: 10'2" x 12'8"  
Area: 128 sq. ft  
Counted as living area: Yes

Heated: Yes  
Finished: Yes  
Enclosed: Yes  
Contiguous: Yes  
Permitted: Yes  
Wet space: No  
Addition: No  
Conversion: No

14 Floor 2 - Breakfast Nook



Dimensions: 22'8" x 8'5"  
Area: 190 sq. ft  
Counted as living area: Yes

Heated: Yes  
Finished: Yes  
Enclosed: Yes  
Contiguous: Yes  
Permitted: Yes  
Wet space: No  
Addition: No  
Conversion: No

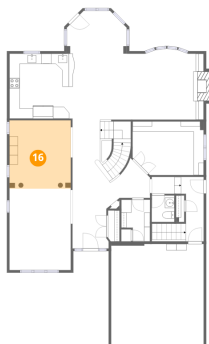
## 15 Floor 2 - Open To Below



Dimensions: 1'10" x 4'1"  
Area: 8 sq. ft  
Counted as living area: No

Heated: No  
Finished: No  
Enclosed: No  
Contiguous: Yes  
Permitted: No  
Wet space: No  
Addition: No  
Conversion: No

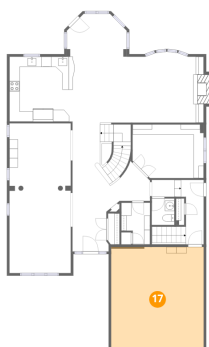
## 16 Floor 2 - Dining Area



Dimensions: 12'0" x 13'4"  
Area: 160 sq. ft  
Counted as living area: Yes

Heated: Yes  
Finished: Yes  
Enclosed: Yes  
Contiguous: Yes  
Permitted: Yes  
Wet space: No  
Addition: No  
Conversion: No

## 17 Floor 2 - Garage



Dimensions: 18'1" x 19'10"  
Area: 359 sq. ft  
Counted as living area: No

Heated: No  
Finished: No  
Enclosed: Yes  
Contiguous: Yes  
Permitted: Yes  
Wet space: No  
Addition: No  
Conversion: No

18 Floor 2 - W.I.C.



Dimensions: 5'8" x 8'2"  
Area: 46 sq. ft  
Counted as living area: Yes

Heated: Yes  
Finished: Yes  
Enclosed: Yes  
Contiguous: Yes  
Permitted: Yes  
Wet space: No  
Addition: No  
Conversion: No

19 Floor 2 - Foyer



Dimensions: 7'1" x 7'9"  
Area: 55 sq. ft  
Counted as living area: Yes

Heated: Yes  
Finished: Yes  
Enclosed: Yes  
Contiguous: Yes  
Permitted: Yes  
Wet space: No  
Addition: No  
Conversion: No

20 Floor 2 - Family Room



Dimensions: 19'7" x 12'11"  
Area: 252 sq. ft  
Counted as living area: Yes

Heated: Yes  
Finished: Yes  
Enclosed: Yes  
Contiguous: Yes  
Permitted: Yes  
Wet space: No  
Addition: No  
Conversion: No

### 21 Floor 3 - W.I.C.

---



Dimensions: 6'9" x 5'1"  
Area: 34 sq. ft  
Counted as living area: Yes

Heated: Yes  
Finished: Yes  
Enclosed: Yes  
Contiguous: Yes  
Permitted: Yes  
Wet space: No  
Addition: No  
Conversion: No

### 22 Floor 3 - W.I.C.

---

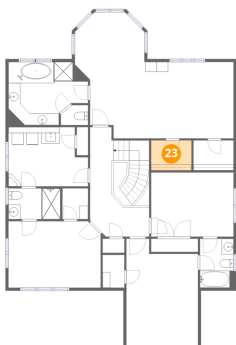


Dimensions: 3'8" x 5'6"  
Area: 20 sq. ft  
Counted as living area: Yes

Heated: Yes  
Finished: Yes  
Enclosed: Yes  
Contiguous: Yes  
Permitted: Yes  
Wet space: No  
Addition: No  
Conversion: No

### 23 Floor 3 - W.I.C.

---



Dimensions: 6'10" x 5'1"  
Area: 35 sq. ft  
Counted as living area: Yes

Heated: Yes  
Finished: Yes  
Enclosed: Yes  
Contiguous: Yes  
Permitted: Yes  
Wet space: No  
Addition: No  
Conversion: No

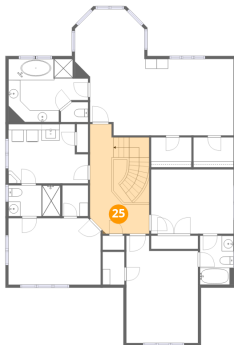
### 24 Floor 3 - Bath



Dimensions: 5'8" x 8'3"  
Area: 47 sq. ft  
Counted as living area: Yes

Heated: Yes  
Finished: Yes  
Enclosed: Yes  
Contiguous: Yes  
Permitted: Yes  
Wet space: Yes  
Addition: No  
Conversion: No

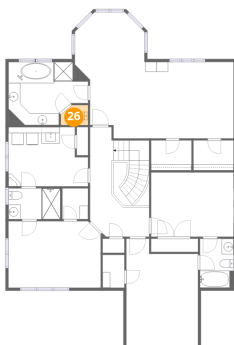
### 25 Floor 3 - Hall



Dimensions: 10'0" x 18'6"  
Area: 185 sq. ft  
Counted as living area: Yes

Heated: Yes  
Finished: Yes  
Enclosed: Yes  
Contiguous: Yes  
Permitted: Yes  
Wet space: No  
Addition: No  
Conversion: No

### 26 Floor 3 - Bath



Dimensions: 4'7" x 3'4"  
Area: 15 sq. ft  
Counted as living area: Yes

Heated: Yes  
Finished: Yes  
Enclosed: Yes  
Contiguous: Yes  
Permitted: Yes  
Wet space: Yes  
Addition: No  
Conversion: No



### 27 Floor 3 - Bath



Dimensions: 8'9" x 5'3"  
Area: 46 sq. ft  
Counted as living area: Yes

Heated: Yes  
Finished: Yes  
Enclosed: Yes  
Contiguous: Yes  
Permitted: Yes  
Wet space: Yes  
Addition: No  
Conversion: No

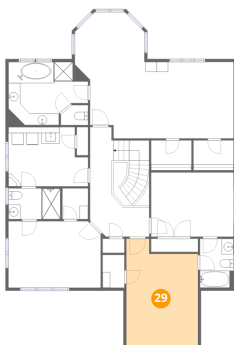
### 28 Floor 3 - Bedroom



Dimensions: 15'7" x 11'3"  
Area: 175 sq. ft  
Counted as living area: Yes

Heated: Yes  
Finished: Yes  
Enclosed: Yes  
Contiguous: Yes  
Permitted: Yes  
Wet space: No  
Addition: No  
Conversion: No

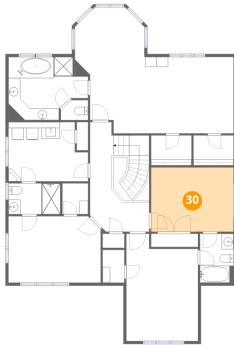
### 29 Floor 3 - Bedroom



Dimensions: 12'1" x 18'1"  
Area: 219 sq. ft  
Counted as living area: Yes

Heated: Yes  
Finished: Yes  
Enclosed: Yes  
Contiguous: Yes  
Permitted: Yes  
Wet space: No  
Addition: No  
Conversion: No

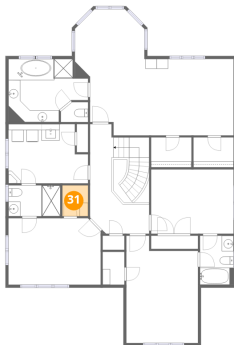
### 30 Floor 3 - Bedroom



Dimensions: 13'11" x 10'10"  
Area: 151 sq. ft  
Counted as living area: Yes

Heated: Yes  
Finished: Yes  
Enclosed: Yes  
Contiguous: Yes  
Permitted: Yes  
Wet space: No  
Addition: No  
Conversion: No

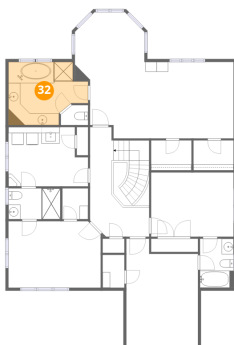
### 31 Floor 3 - W.I.C.



Dimensions: 4'4" x 5'3"  
Area: 23 sq. ft  
Counted as living area: Yes

Heated: Yes  
Finished: Yes  
Enclosed: Yes  
Contiguous: Yes  
Permitted: Yes  
Wet space: No  
Addition: No  
Conversion: No

### 32 Floor 3 - Primary Bath



Dimensions: 13'5" x 10'8"  
Area: 143 sq. ft  
Counted as living area: Yes

Heated: Yes  
Finished: Yes  
Enclosed: Yes  
Contiguous: Yes  
Permitted: Yes  
Wet space: Yes  
Addition: No  
Conversion: No

### 33 Floor 3 - Laundry



Dimensions: 13'5" x 10'0"  
Area: 134 sq. ft  
Counted as living area: Yes

Heated: Yes  
Finished: Yes  
Enclosed: Yes  
Contiguous: Yes  
Permitted: Yes  
Wet space: No  
Addition: No  
Conversion: No

### 34 Floor 3 - Open To Below



Dimensions: 2'1" x 7'3"  
Area: 15 sq. ft  
Counted as living area: No

Heated: No  
Finished: No  
Enclosed: No  
Contiguous: Yes  
Permitted: No  
Wet space: No  
Addition: No  
Conversion: No

### 35 Floor 3 - Primary Bedroom



Dimensions: 26'10" x 21'4"  
Area: 571 sq. ft  
Counted as living area: Yes

Heated: Yes  
Finished: Yes  
Enclosed: Yes  
Contiguous: Yes  
Permitted: Yes  
Wet space: No  
Addition: No  
Conversion: No