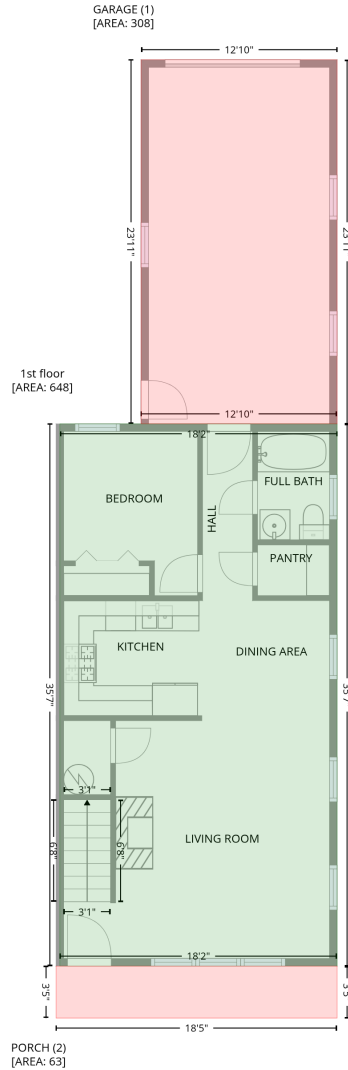


92 Rotunda Circle, Asheville, Buncombe County, North Carolina, United States, 28806

Gross Living Area: 1296 sq. ft

Level 1



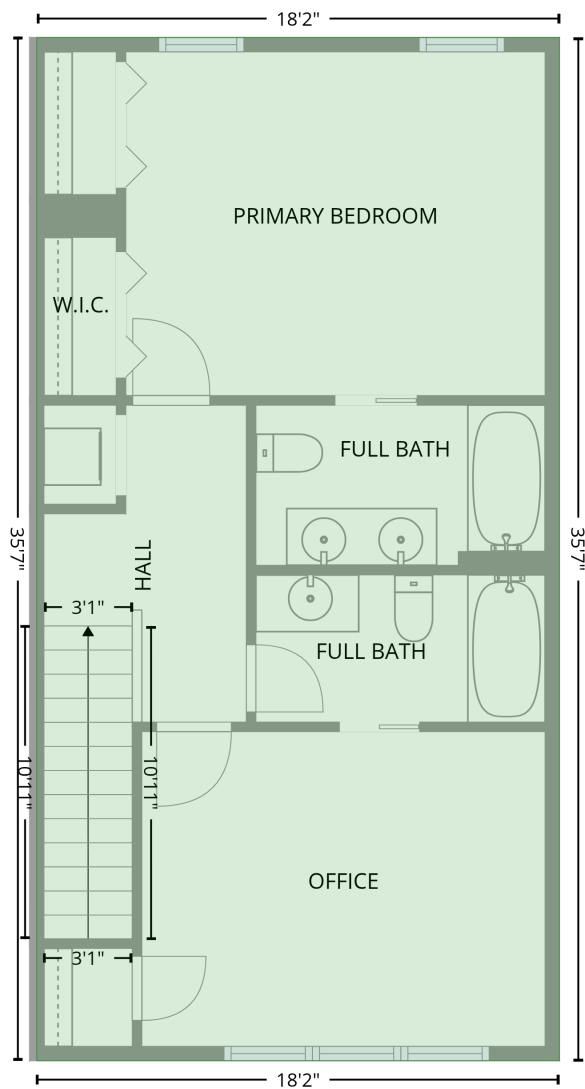
Space	Area (sq. ft)	Calculation
1st floor (Living area)	648	$-\left((266.9 + 266.9) * (396.5 - 823.9) + (266.9 + 48.6) * (823.9 - 823.9) + (48.6 + 48.6) * (823.9 - 396.5) + (48.6 + 266.9) * (396.5 - 396.5)\right) * 0.5 * 0.00694$
GARAGE (Non-living area)	308	$-\left((112.5 + 266.9) * (109.6 - 109.6) + (266.9 + 266.9) * (109.6 - 396.5) + (266.9 + 112.5) * (396.5 - 396.5) + (112.5 + 112.5) * (396.5 - 109.6)\right) * 0.5 * 0.00694$
PORCH (Non-living area)	63	$-\left((266.9 + 266.9) * (823.9 - 864.8) + (266.9 + 45.6) * (864.8 - 864.8) + (45.6 + 45.6) * (864.8 - 823.9) + (45.6 + 266.9) * (823.9 - 823.9)\right) * 0.5 * 0.00694$

92 Rotunda Circle, Asheville, Buncombe County, North Carolina, United States, 28806

Gross Living Area: 1296 sq. ft

Level 2

2nd floor
[AREA: 648]



Space	Area (sq. ft)	Calculation <small>Coordinate Polygon Area Algorithm using inches</small>
2nd floor (Living area)	648	$-\left((266.9 + 266.9) * (396.5 - 823.9) + (266.9 + 48.6) * (823.9 - 823.9) + (48.6 + 48.6) * (823.9 - 396.5) + (48.6 + 266.9) * (396.5 - 396.5)\right) * 0.5 * 0.00694$