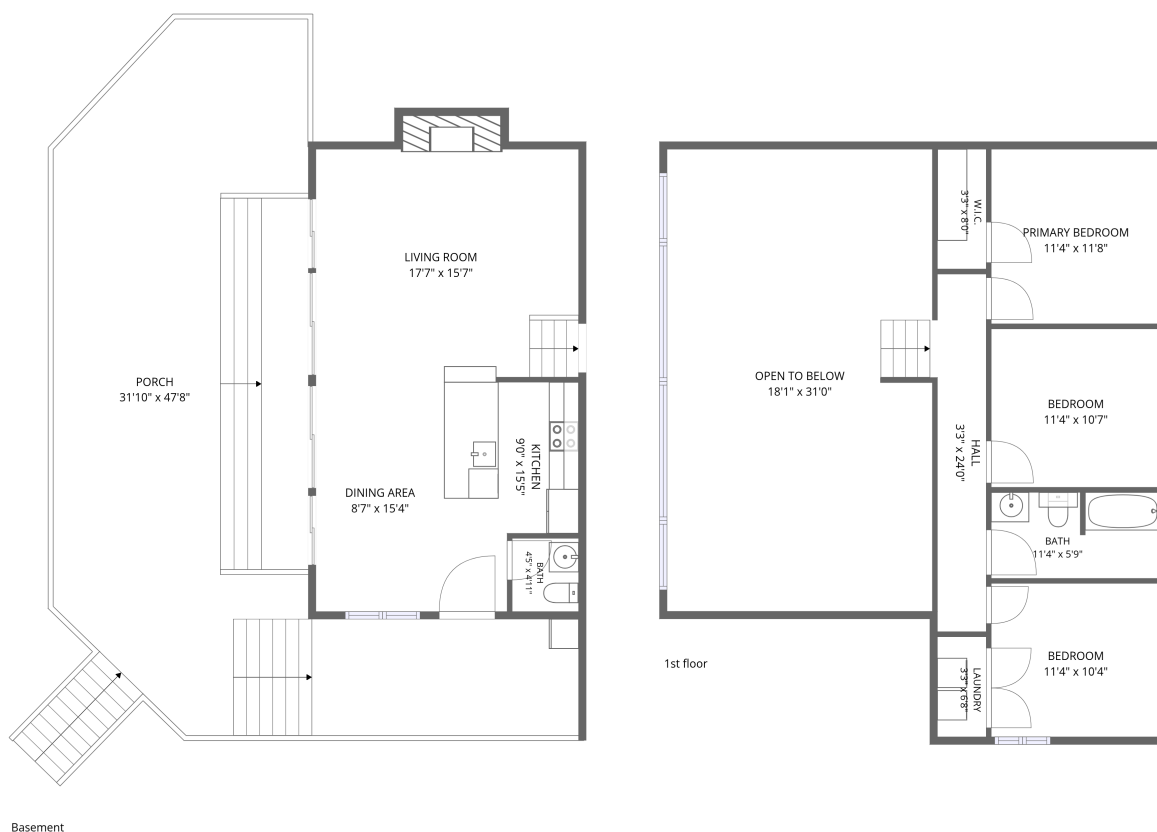


Home data report

20 Macbeth Island, Bracebridge, Muskoka Lakes, Ontario, Canada, P1L 1X1



Total Area: 1147 sq. ft

Basement: 549 sq. ft, 1st Floor: 598 sq. ft

Excluded: Porch 918 sq. ft, Fireplace 17 sq. ft, Open to below 552 sq. ft, Walls: 124 sq. ft

Property summary

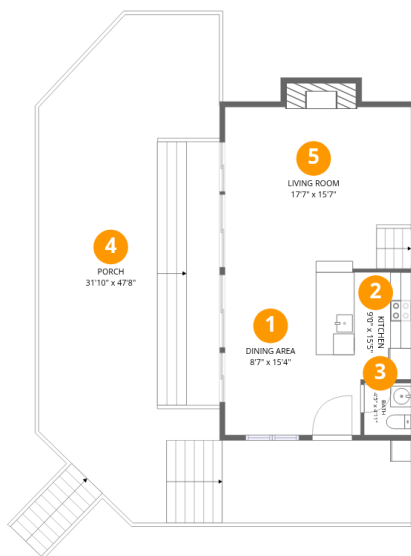
 **2** Floors

 **3** Bedrooms

 **1** Bathrooms

 **1** Half baths

20 Macbeth Island, Bracebridge, Muskoka Lakes, Ontario, Canada, P1L 1X1



Room dimensions

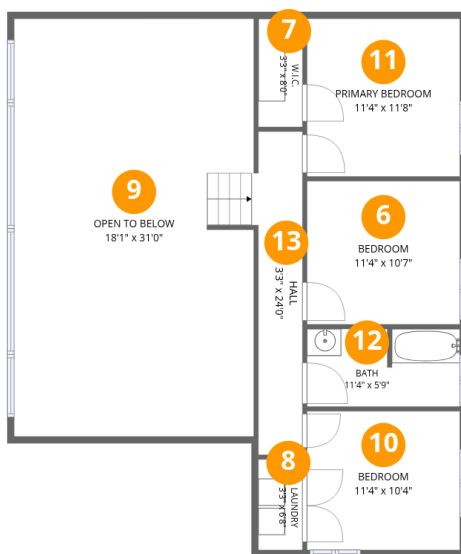
Floor 1 Below grade

Total:549sqft

Excluded: 935sqft

#		Dimensions	sqft	Counted as living area
1	Dining Area	8'7" x 15'4"	132 sq. ft	Yes
2	Kitchen	9'0" x 15'5"	113 sq. ft	Yes
3	Bath	4'5" x 4'11"	22 sq. ft	Yes
4	Porch	31'10" x 47'8"	918 sq. ft	No
5	Living Room	17'7" x 15'7"	288 sq. ft	Yes

20 Macbeth Island, Bracebridge, Muskoka Lakes, Ontario, Canada, P1L 1X1



Room dimensions

Floor 2

Total:598sqft Excluded: 552sqft

#		Dimensions	sqft	Counted as living area
6	Bedroom	11'4" x 10'7"	121 sq. ft	Yes
7	W.I.C.	3'3" x 8'0"	26 sq. ft	Yes
8	Laundry	3'3" x 6'8"	22 sq. ft	Yes
9	Open To Below	18'1" x 31'0"	551 sq. ft	No
10	Bedroom	11'4" x 10'4"	117 sq. ft	Yes
11	Primary Bedroom	11'4" x 11'8"	133 sq. ft	Yes
12	Bath	11'4" x 5'9"	64 sq. ft	Yes
13	Hall	3'3" x 24'0"	79 sq. ft	Yes

20 Macbeth Island, Bracebridge, Muskoka Lakes, Ontario, Canada, P1L 1X1

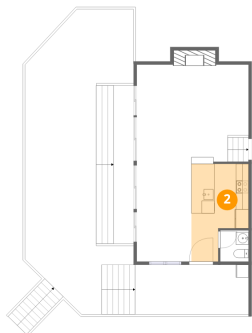
1 Floor 1 - Dining Area



Dimensions: 8'7" x 15'4"
Area: 132 sq. ft
Counted as living area: Yes

Heated: Yes
Finished: Yes
Enclosed: Yes
Contiguous: Yes
Permitted: Yes
Wet space: No
Addition: No
Conversion: No

2 Floor 1 - Kitchen



Dimensions: 9'0" x 15'5"
Area: 113 sq. ft
Counted as living area: Yes

Heated: Yes
Finished: Yes
Enclosed: Yes
Contiguous: Yes
Permitted: Yes
Wet space: No
Addition: No
Conversion: No

20 Macbeth Island, Bracebridge, Muskoka Lakes, Ontario, Canada, P1L 1X1

3 Floor 1 - Bath



Dimensions: 4'5" x 4'11"
Area: 22 sq. ft
Counted as living area: Yes

Heated: Yes
Finished: Yes
Enclosed: Yes
Contiguous: Yes
Permitted: Yes
Wet space: Yes
Addition: No
Conversion: No

4 Floor 1 - Porch



Dimensions: 31'10" x 47'8"
Area: 918 sq. ft
Counted as living area: No

Heated: No
Finished: No
Enclosed: No
Contiguous: Yes
Permitted: Yes
Wet space: No
Addition: No
Conversion: No

5 Floor 1 - Living Room

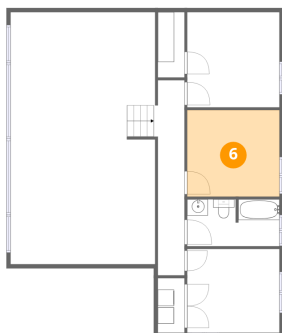


Dimensions: 17'7" x 15'7"
Area: 288 sq. ft
Counted as living area: Yes

Heated: Yes
Finished: Yes
Enclosed: Yes
Contiguous: Yes
Permitted: Yes
Wet space: No
Addition: No
Conversion: No

20 Macbeth Island, Bracebridge, Muskoka Lakes, Ontario, Canada, P1L 1X1

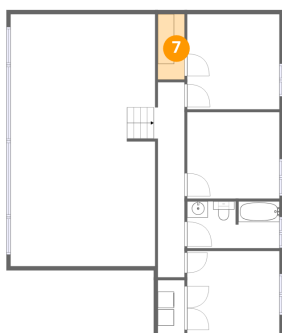
6 Floor 2 - Bedroom



Dimensions: 11'4" x 10'7"
Area: 121 sq. ft
Counted as living area: Yes

Heated: Yes
Finished: Yes
Enclosed: Yes
Contiguous: Yes
Permitted: Yes
Wet space: No
Addition: No
Conversion: No

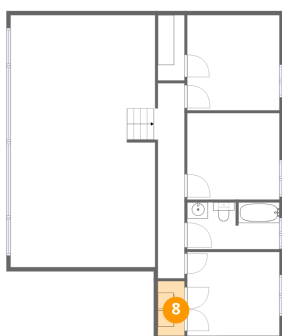
7 Floor 2 - W.I.C.



Dimensions: 3'3" x 8'0"
Area: 26 sq. ft
Counted as living area: Yes

Heated: Yes
Finished: Yes
Enclosed: Yes
Contiguous: Yes
Permitted: Yes
Wet space: No
Addition: No
Conversion: No

8 Floor 2 - Laundry

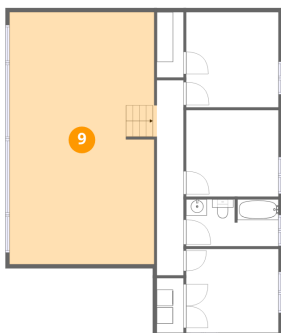


Dimensions: 3'3" x 6'8"
Area: 22 sq. ft
Counted as living area: Yes

Heated: Yes
Finished: Yes
Enclosed: Yes
Contiguous: Yes
Permitted: Yes
Wet space: No
Addition: No
Conversion: No

20 Macbeth Island, Bracebridge, Muskoka Lakes, Ontario, Canada, P1L 1X1

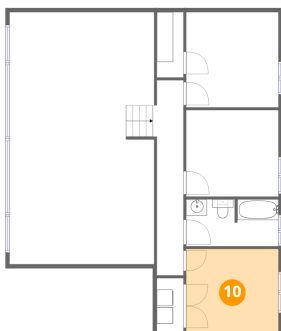
9 Floor 2 - Open To Below



Dimensions: 18'1" x 31'0"
Area: 551 sq. ft
Counted as living area: No

Heated: No
Finished: Yes
Enclosed: No
Contiguous: Yes
Permitted: No
Wet space: No
Addition: No
Conversion: No

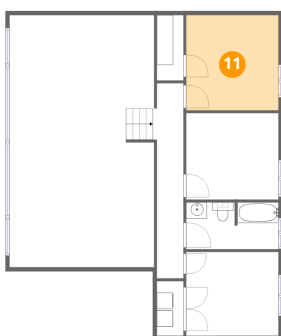
10 Floor 2 - Bedroom



Dimensions: 11'4" x 10'4"
Area: 117 sq. ft
Counted as living area: Yes

Heated: Yes
Finished: Yes
Enclosed: Yes
Contiguous: Yes
Permitted: Yes
Wet space: No
Addition: No
Conversion: No

11 Floor 2 - Primary Bedroom

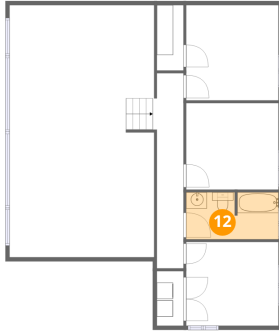


Dimensions: 11'4" x 11'8"
Area: 133 sq. ft
Counted as living area: Yes

Heated: Yes
Finished: Yes
Enclosed: Yes
Contiguous: Yes
Permitted: Yes
Wet space: No
Addition: No
Conversion: No

20 Macbeth Island, Bracebridge, Muskoka Lakes, Ontario,
Canada, P1L 1X1

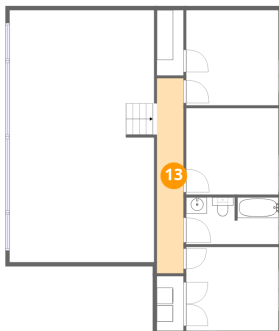
12 Floor 2 - Bath



Dimensions: 11'4" x 5'9"
Area: 64 sq. ft
Counted as living area: Yes

Heated: Yes
Finished: Yes
Enclosed: Yes
Contiguous: Yes
Permitted: Yes
Wet space: Yes
Addition: No
Conversion: No

13 Floor 2 - Hall



Dimensions: 3'3" x 24'0"
Area: 79 sq. ft
Counted as living area: Yes

Heated: Yes
Finished: Yes
Enclosed: Yes
Contiguous: Yes
Permitted: Yes
Wet space: No
Addition: No
Conversion: No