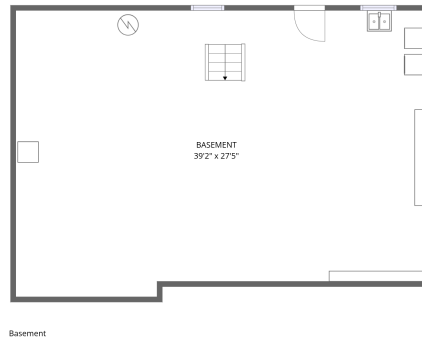
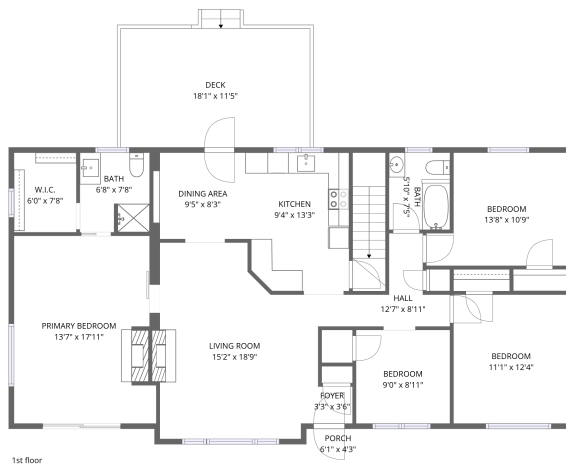


## Home data report

# 135 Center Street, Rocky Mount, Virginia, United States



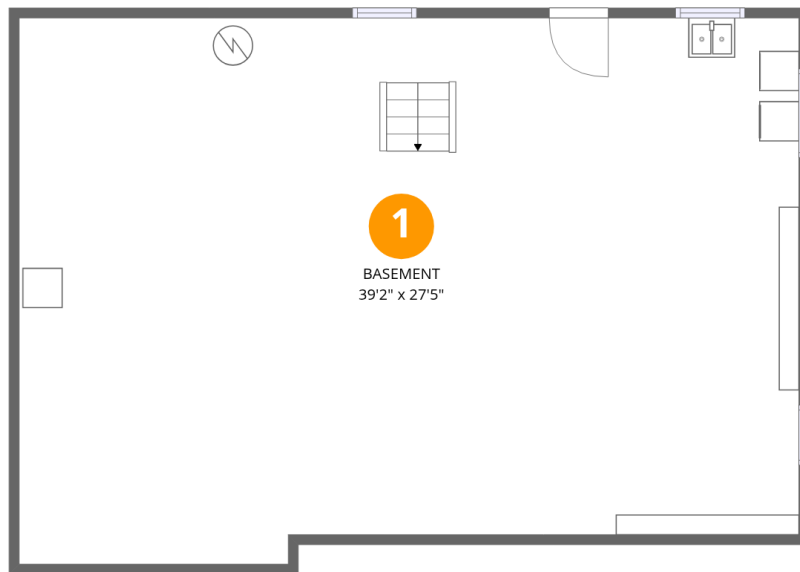
**Total Area: 1395 sq. ft**

Basement: 0 sq. ft, 1st Floor: 1395 sq. ft

Excluded: Basement 1034 sq. ft, Porch 26 sq. ft, Deck 206 sq. ft, Walls: 149 sq. ft

## Property summary





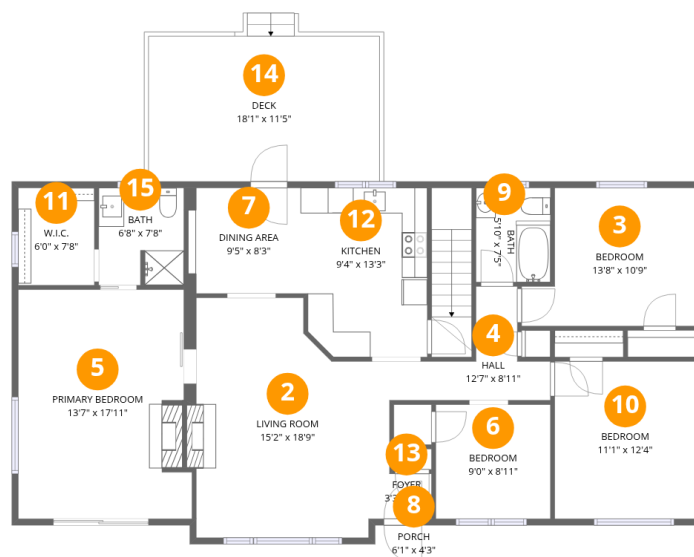
## Room dimensions

Floor 1 Below grade

Total: 0sqft

Excluded: 1034sqft

#		Dimensions	sqft	Counted as living area
1	Basement	39'2" x 27'5"	1034 sq. ft	No



## Room dimensions

Floor 2

Total: 1395sqft Excluded: 232sqft

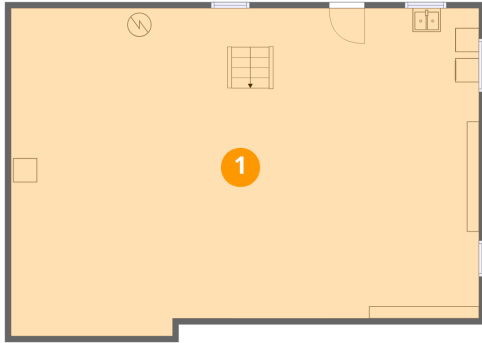
#		Dimensions	sqft	Counted as living area
2	Living Room	15'2" x 18'9"	255 sq. ft	Yes
3	Bedroom	13'8" x 10'9"	128 sq. ft	Yes
4	Hall	12'7" x 8'11"	57 sq. ft	Yes
5	Primary Bedroom	13'7" x 17'11"	233 sq. ft	Yes
6	Bedroom	9'0" x 8'11"	80 sq. ft	Yes
7	Dining Area	9'5" x 8'3"	75 sq. ft	Yes
8	Porch	6'1" x 4'3"	26 sq. ft	No
9	Bath	5'10" x 7'5"	43 sq. ft	Yes
10	Bedroom	11'1" x 12'4"	136 sq. ft	Yes
11	W.I.C.	6'0" x 7'8"	46 sq. ft	Yes
12	Kitchen	9'4" x 13'3"	122 sq. ft	Yes

Home data report

**135 Center Street,Rocky Mount, Virginia,United States**

#		Dimensions	sqft	Counted as living area
13	Foyer	3'3" x 3'6"	12 sq. ft	Yes
14	Deck	18'1" x 11'5"	206 sq. ft	No
15	Bath	6'8" x 7'8"	50 sq. ft	Yes

## 1 Floor 1 - Basement



Dimensions: 39'2" x 27'5"  
Area: 1034 sq. ft  
Counted as living area: No

Heated: Yes  
Finished: No  
Enclosed: Yes  
Contiguous: Yes  
Permitted: Yes  
Wet space: No  
Addition: No  
Conversion: No

## 2 Floor 2 - Living Room



Dimensions: 15'2" x 18'9"  
Area: 255 sq. ft  
Counted as living area: Yes

Heated: Yes  
Finished: Yes  
Enclosed: Yes  
Contiguous: Yes  
Permitted: Yes  
Wet space: No  
Addition: No  
Conversion: No

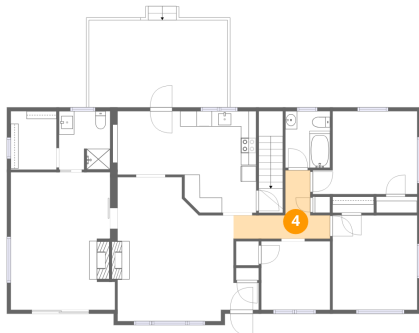
### 3 Floor 2 - Bedroom



Dimensions: 13'8" x 10'9"  
Area: 128 sq. ft  
Counted as living area: Yes

Heated: Yes  
Finished: Yes  
Enclosed: Yes  
Contiguous: Yes  
Permitted: Yes  
Wet space: No  
Addition: No  
Conversion: No

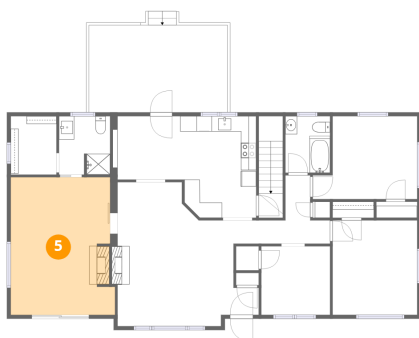
### 4 Floor 2 - Hall



Dimensions: 12'7" x 8'11"  
Area: 57 sq. ft  
Counted as living area: Yes

Heated: Yes  
Finished: Yes  
Enclosed: Yes  
Contiguous: Yes  
Permitted: Yes  
Wet space: No  
Addition: No  
Conversion: No

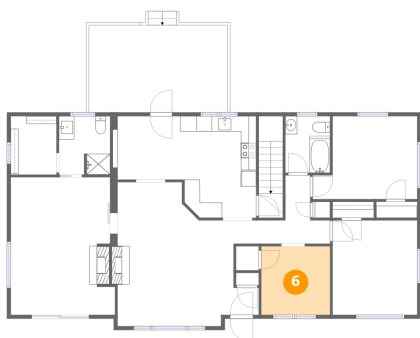
### 5 Floor 2 - Primary Bedroom



Dimensions: 13'7" x 17'11"  
Area: 233 sq. ft  
Counted as living area: Yes

Heated: Yes  
Finished: Yes  
Enclosed: Yes  
Contiguous: Yes  
Permitted: Yes  
Wet space: No  
Addition: No  
Conversion: No

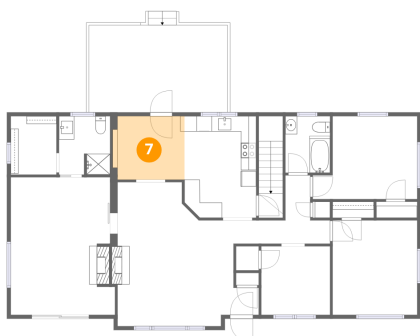
## 6 Floor 2 - Bedroom



Dimensions: 9'0" x 8'11"  
Area: 80 sq. ft  
Counted as living area: Yes

Heated: Yes  
Finished: Yes  
Enclosed: Yes  
Contiguous: Yes  
Permitted: Yes  
Wet space: No  
Addition: No  
Conversion: No

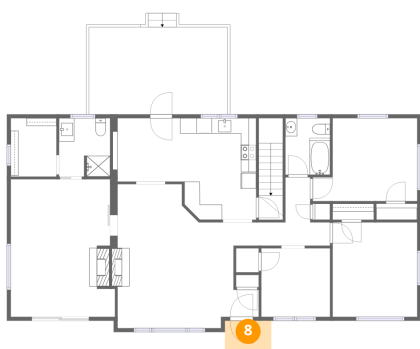
## 7 Floor 2 - Dining Area



Dimensions: 9'5" x 8'3"  
Area: 75 sq. ft  
Counted as living area: Yes

Heated: Yes  
Finished: Yes  
Enclosed: Yes  
Contiguous: Yes  
Permitted: Yes  
Wet space: No  
Addition: No  
Conversion: No

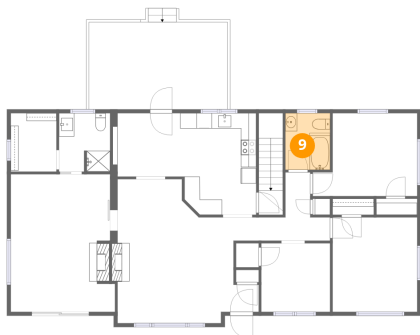
## 8 Floor 2 - Porch



Dimensions: 6'1" x 4'3"  
Area: 26 sq. ft  
Counted as living area: No

Heated: No  
Finished: No  
Enclosed: No  
Contiguous: Yes  
Permitted: Yes  
Wet space: No  
Addition: No  
Conversion: No

### 9 Floor 2 - Bath



Dimensions: 5'10" x 7'5"  
Area: 43 sq. ft  
Counted as living area: Yes

Heated: Yes  
Finished: Yes  
Enclosed: Yes  
Contiguous: Yes  
Permitted: Yes  
Wet space: Yes  
Addition: No  
Conversion: No

### 10 Floor 2 - Bedroom



Dimensions: 11'1" x 12'4"  
Area: 136 sq. ft  
Counted as living area: Yes

Heated: Yes  
Finished: Yes  
Enclosed: Yes  
Contiguous: Yes  
Permitted: Yes  
Wet space: No  
Addition: No  
Conversion: No

### 11 Floor 2 - W.I.C.



Dimensions: 6'0" x 7'8"  
Area: 46 sq. ft  
Counted as living area: Yes

Heated: Yes  
Finished: Yes  
Enclosed: Yes  
Contiguous: Yes  
Permitted: Yes  
Wet space: No  
Addition: No  
Conversion: No

## 12 Floor 2 - Kitchen



Dimensions: 9'4" x 13'3"  
Area: 122 sq. ft  
Counted as living area: Yes

Heated: Yes  
Finished: Yes  
Enclosed: Yes  
Contiguous: Yes  
Permitted: Yes  
Wet space: No  
Addition: No  
Conversion: No

## 13 Floor 2 - Foyer



Dimensions: 3'3" x 3'6"  
Area: 12 sq. ft  
Counted as living area: Yes

Heated: Yes  
Finished: Yes  
Enclosed: Yes  
Contiguous: Yes  
Permitted: Yes  
Wet space: No  
Addition: No  
Conversion: No

## 14 Floor 2 - Deck



Dimensions: 18'1" x 11'5"  
Area: 206 sq. ft  
Counted as living area: No

Heated: No  
Finished: No  
Enclosed: No  
Contiguous: Yes  
Permitted: Yes  
Wet space: No  
Addition: No  
Conversion: No

**15** Floor 2 - Bath

---



Dimensions: 6'8" x 7'8"  
Area: 50 sq. ft  
Counted as living area: Yes

Heated: Yes  
Finished: Yes  
Enclosed: Yes  
Contiguous: Yes  
Permitted: Yes  
Wet space: Yes  
Addition: No  
Conversion: No