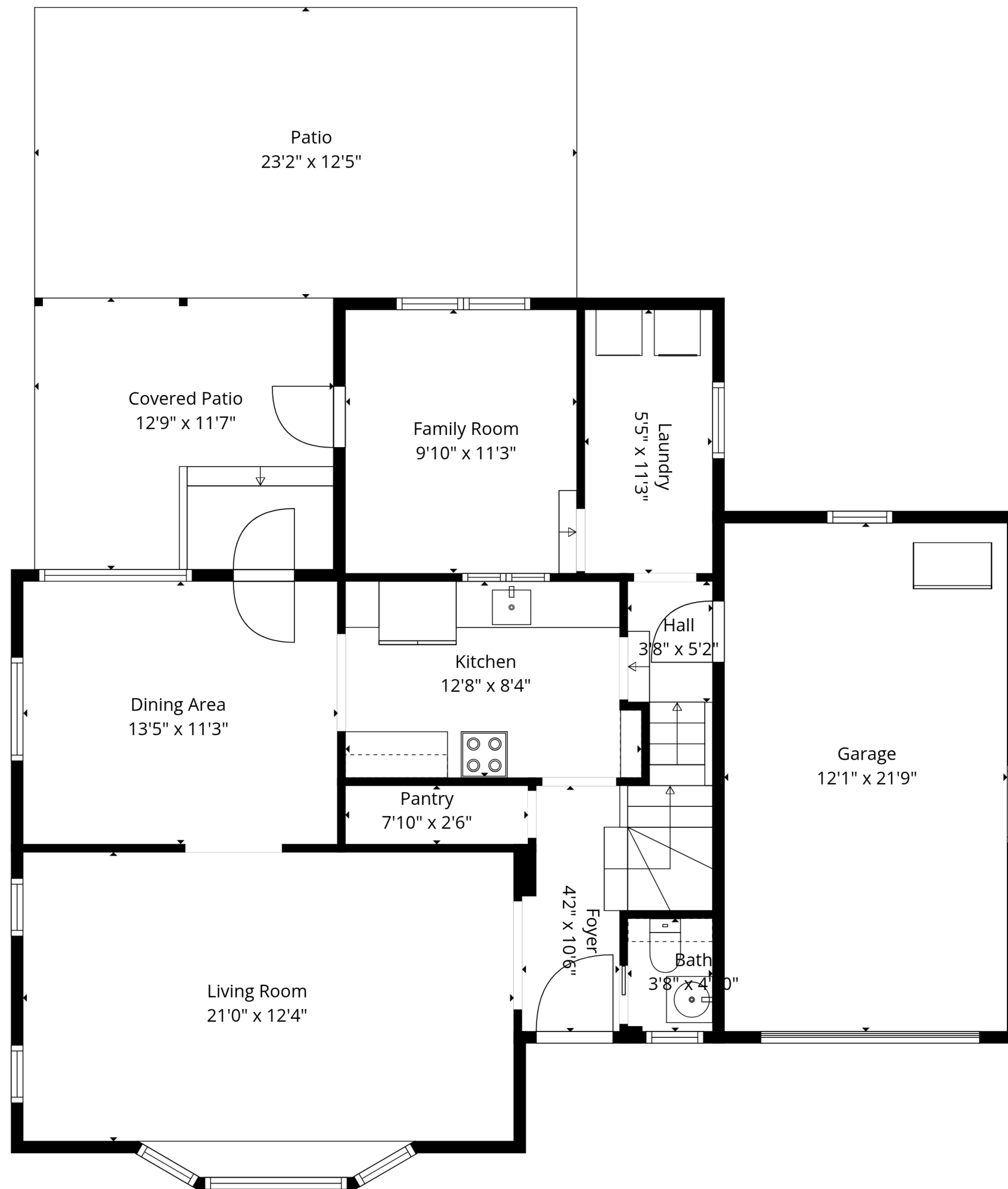


Basement  
29'1" x 25'6"

**TOTAL: 1562 sq. ft**

Basement: 0 sq. ft, 1st floor: 863 sq. ft, 2nd floor: 699 sq. ft  
EXCLUDED AREAS: BASEMENT: 674 sq. ft, PATIO: 288 sq. ft, COVERED PATIO: 148 sq. ft,  
GARAGE: 263 sq. ft, WALLS: 200 sq. ft

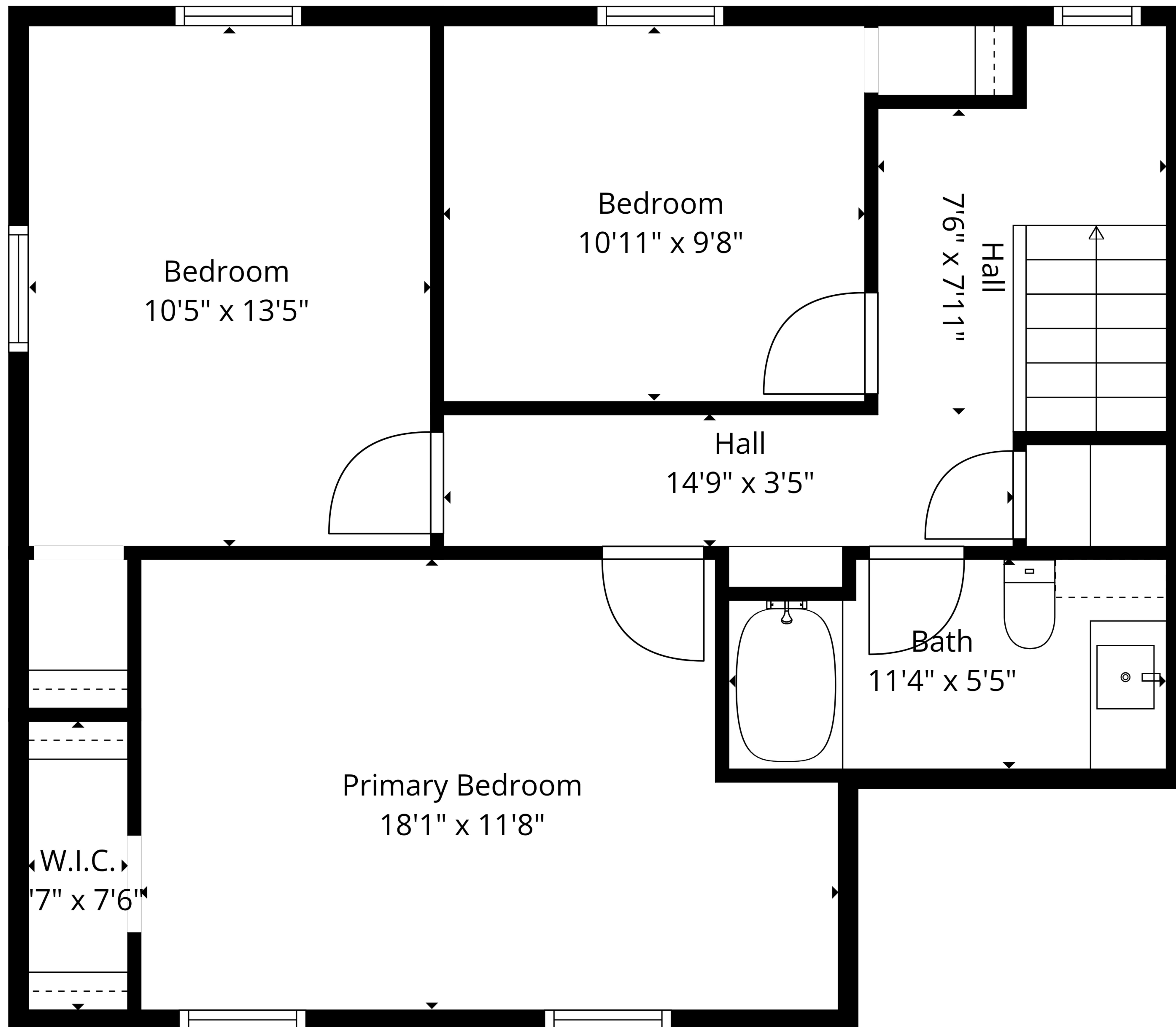


**TOTAL: 1562 sq. ft**

Basement: 0 sq. ft, 1st floor: 863 sq. ft, 2nd floor: 699 sq. ft

EXCLUDED AREAS: BASEMENT: 674 sq. ft, PATIO: 288 sq. ft, COVERED PATIO: 148 sq. ft,

GARAGE: 263 sq. ft, WALLS: 200 sq. ft

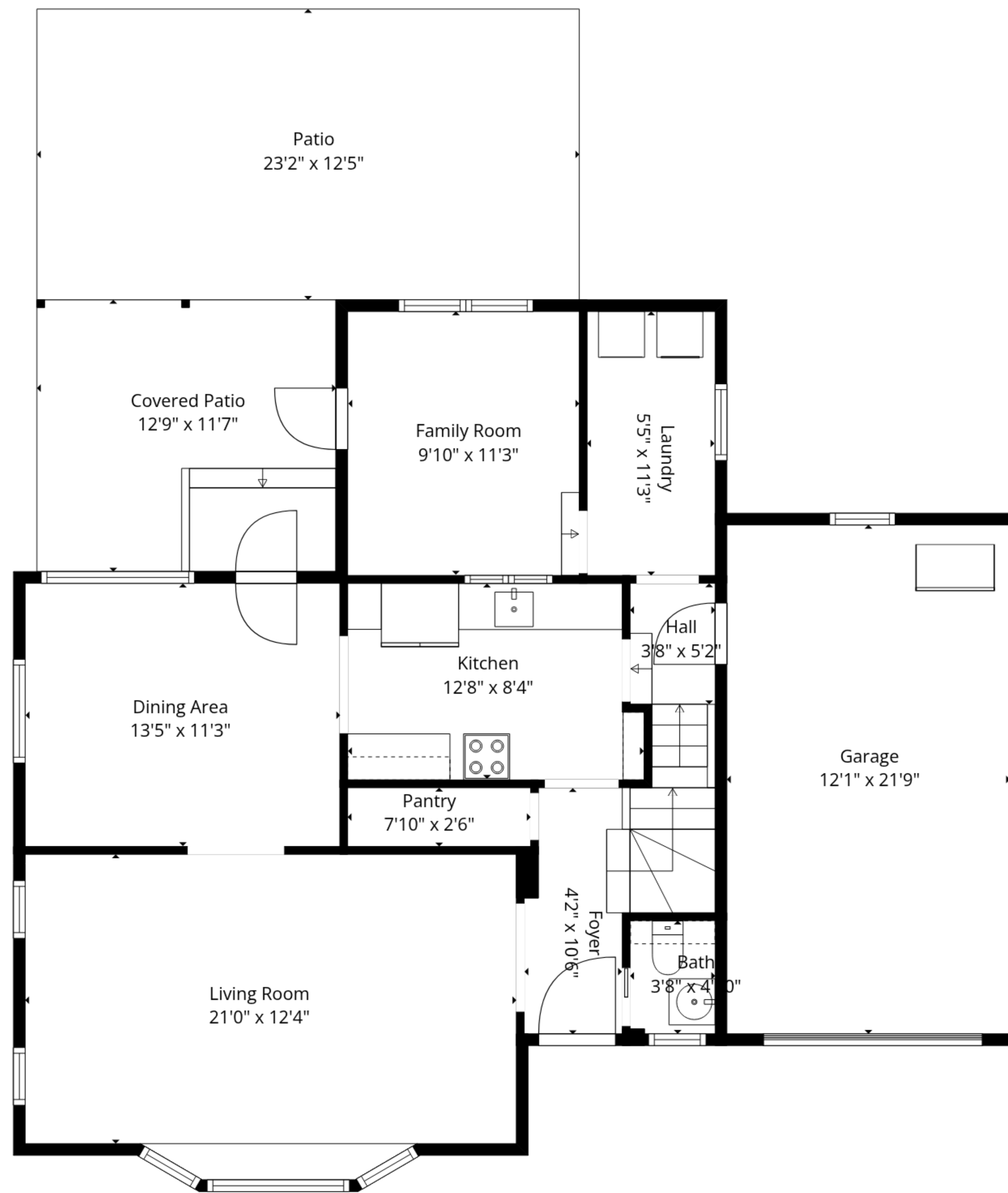


**TOTAL: 1562 sq. ft**

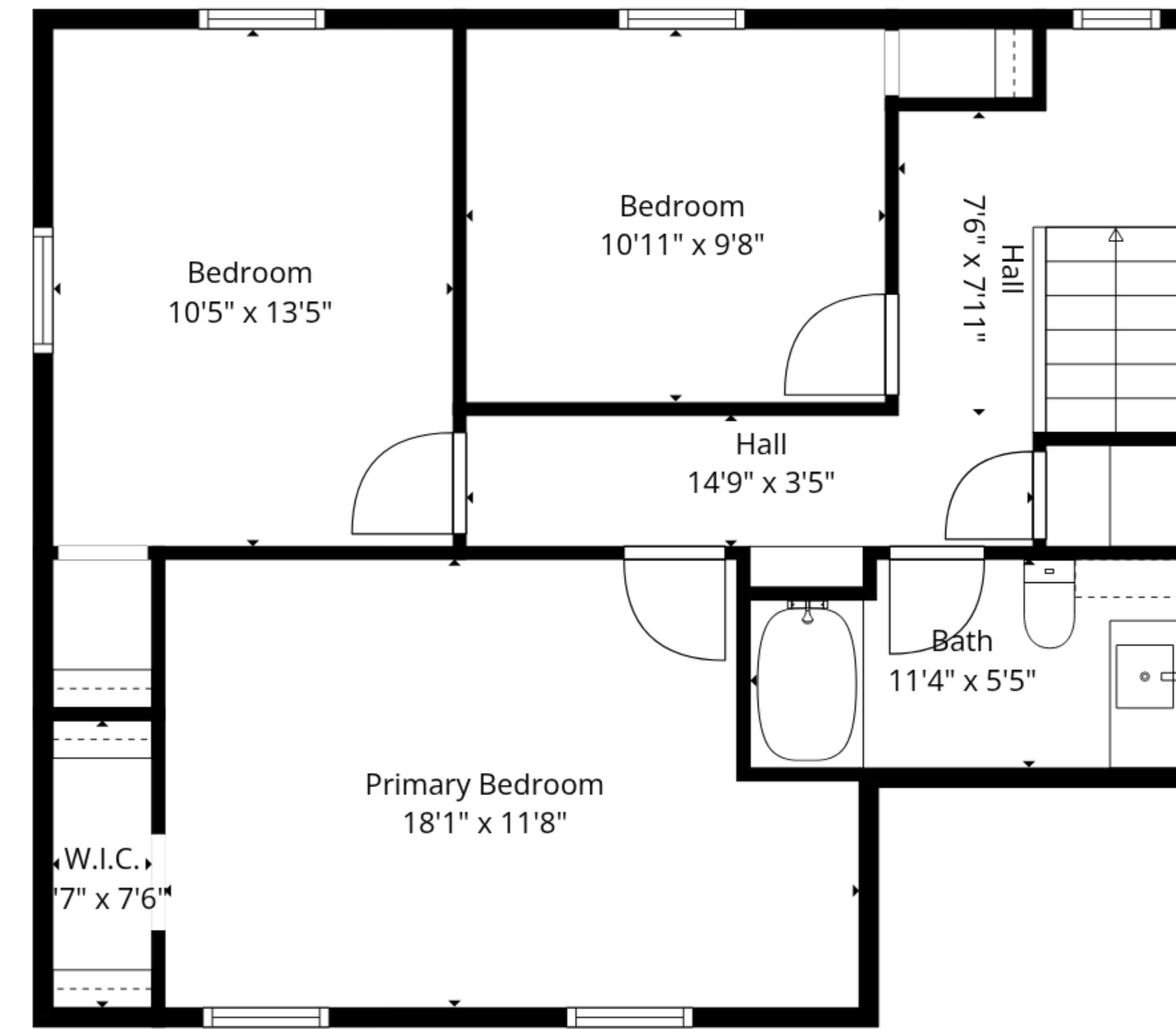
Basement: 0 sq. ft, 1st floor: 863 sq. ft, 2nd floor: 699 sq. ft

EXCLUDED AREAS: BASEMENT: 674 sq. ft, PATIO: 288 sq. ft, COVERED PATIO: 148 sq. ft,

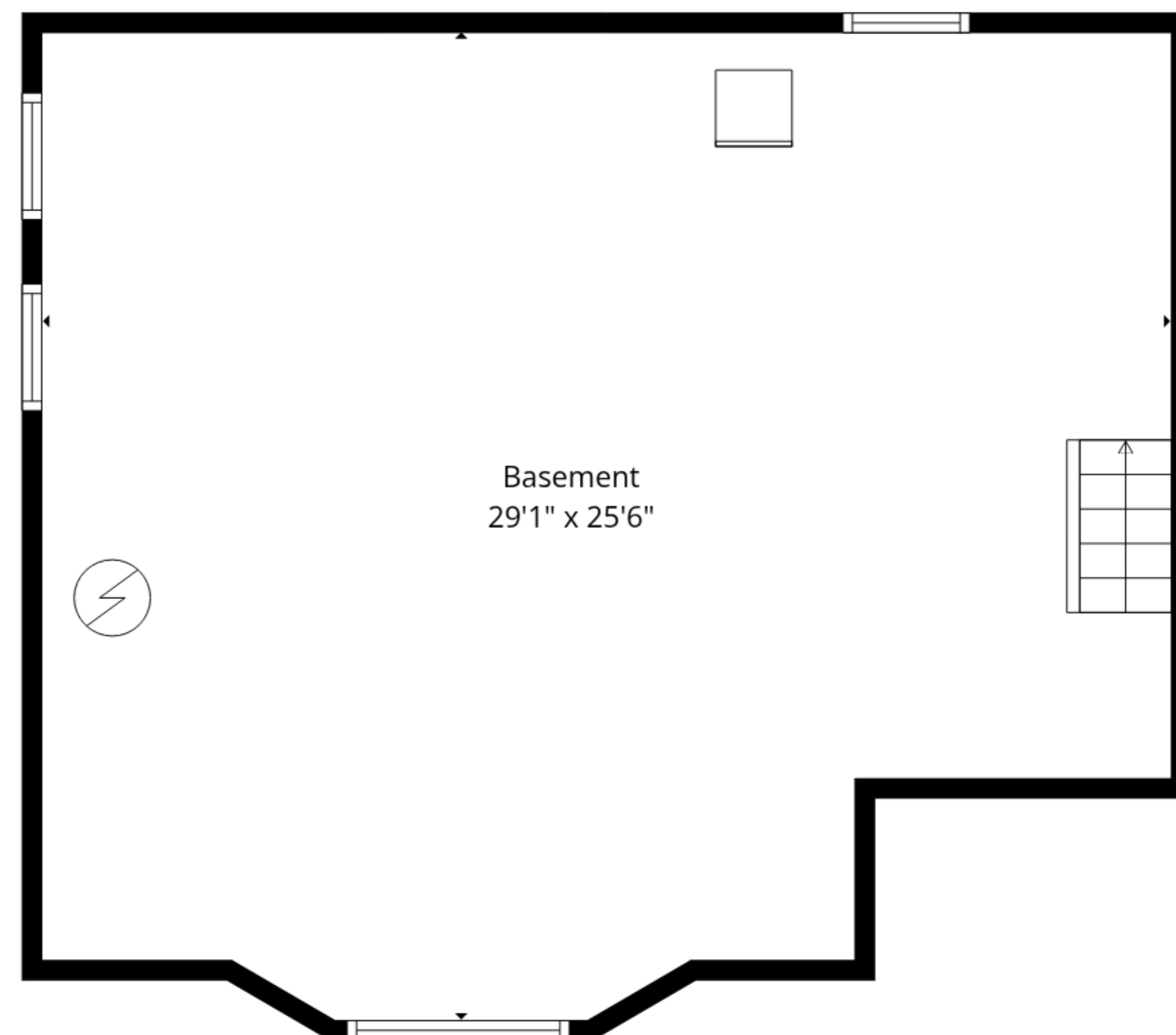
GARAGE: 263 sq. ft, WALLS: 200 sq. ft



1st Floor



2nd Floor



Basement

**TOTAL: 1562 sq. ft**

Basement: 0 sq. ft, 1st floor: 863 sq. ft, 2nd floor: 699 sq. ft

EXCLUDED AREAS: BASEMENT: 674 sq. ft, PATIO: 288 sq. ft, COVERED PATIO: 148 sq. ft,

GARAGE: 263 sq. ft, WALLS: 200 sq. ft