

Home data report

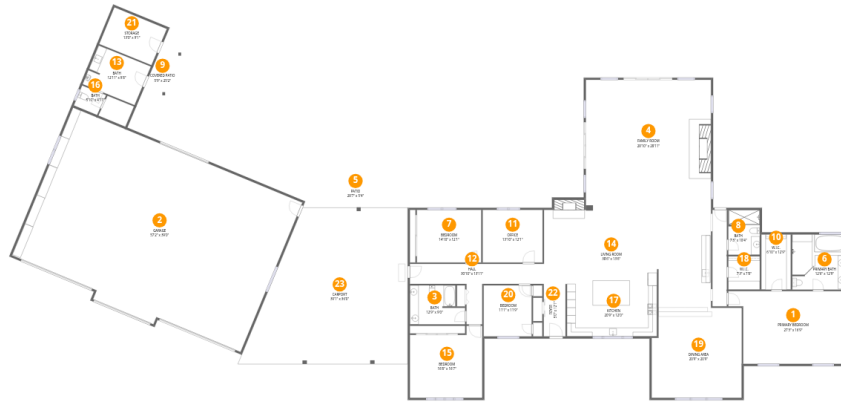
2151 Lurline Avenue, Colusa, Colusa County, California, United States, 95932

 **1**
Half baths

 **1**
Garages

Home data report

2151 Lurline Avenue, Colusa, Colusa County, California, United States, 95932



Room dimensions

Floor 1

Total:4474sqft

Excluded: 3809sqft

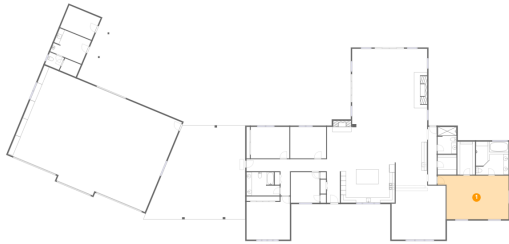
#		Dimensions	sqft	Counted as living area
1	Primary Bedroom	27'3" x 16'9"	412 sq. ft	Yes
2	Garage	57'2" x 39'0"	2148 sq. ft	No
3	Bath	12'9" x 9'0"	102 sq. ft	No
4	Family Room	28'10" x 28'11"	833 sq. ft	Yes
5	Patio	28'7" x 5'4"	152 sq. ft	No
6	Primary Bath	12'6" x 12'9"	158 sq. ft	Yes
7	Bedroom	14'10" x 12'1"	180 sq. ft	Yes
8	Bath	7'3" x 10'4"	74 sq. ft	Yes
9	Covered Patio	5'9" x 25'2"	147 sq. ft	No
10	W.I.C.	6'10" x 12'9"	87 sq. ft	Yes
11	Office	13'10" x 12'1"	167 sq. ft	Yes

Home data report

2151 Lurline Avenue, Colusa, Colusa County, California, United States, 95932

#		Dimensions	sqft	Counted as living area
12	Hall	30'10" x 13'11"	176 sq. ft	Yes
13	Bath	12'11" x 9'8"	124 sq. ft	Yes
14	Living Room	38'6" x 13'6"	772 sq. ft	Yes
15	Bedroom	16'8" x 16'7"	250 sq. ft	Yes
16	Bath	5'10" x 4'11"	29 sq. ft	Yes
17	Kitchen	20'9" x 12'0"	250 sq. ft	Yes
18	W.I.C.	7'3" x 7'8"	56 sq. ft	Yes
19	Dining Area	20'9" x 20'9"	418 sq. ft	Yes
20	Bedroom	11'1" x 11'9"	130 sq. ft	Yes
21	Storage	13'0" x 9'1"	118 sq. ft	No
22	Foyer	5'0" x 12'1"	61 sq. ft	Yes
23	Carport	39'1" x 36'0"	1141 sq. ft	No

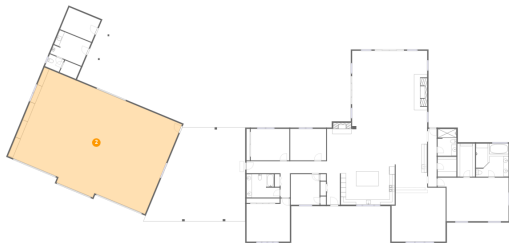
1 Floor 1 - Primary Bedroom



Dimensions: 27'3" x 16'9"
Area: 412 sq. ft
Counted as living area: Yes

Heated: Yes
Finished: Yes
Enclosed: Yes
Contiguous: Yes
Permitted: Yes
Wet space: No
Addition: No
Conversion: No

2 Floor 1 - Garage



Dimensions: 57'2" x 39'0"
Area: 2148 sq. ft
Counted as living area: No

Heated: No
Finished: No
Enclosed: Yes
Contiguous: Yes
Permitted: Yes
Wet space: No
Addition: No
Conversion: No

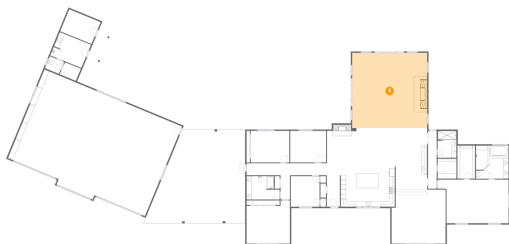
3 Floor 1 - Bath



Dimensions: 12'9" x 9'0"
Area: 102 sq. ft
Counted as living area: No

Heated: Yes
Finished: No
Enclosed: Yes
Contiguous: Yes
Permitted: Yes
Wet space: Yes
Addition: No
Conversion: No

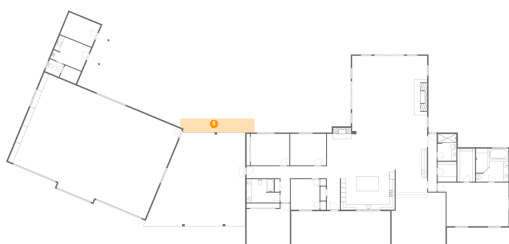
4 Floor 1 - Family Room



Dimensions: 28'10" x 28'11"
Area: 833 sq. ft
Counted as living area: Yes

Heated: Yes
Finished: Yes
Enclosed: Yes
Contiguous: Yes
Permitted: Yes
Wet space: No
Addition: No
Conversion: No

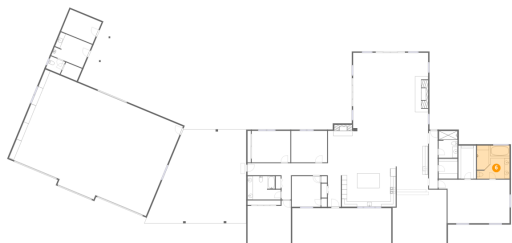
5 Floor 1 - Patio



Dimensions: 28'7" x 5'4"
Area: 152 sq. ft
Counted as living area: No

Heated: No
Finished: No
Enclosed: No
Contiguous: Yes
Permitted: Yes
Wet space: No
Addition: No
Conversion: No

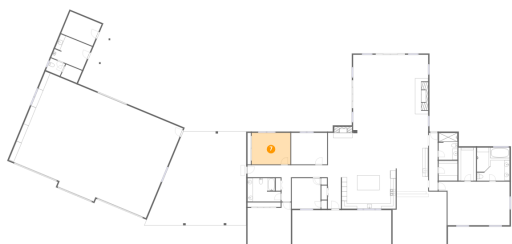
6 Floor 1 - Primary Bath



Dimensions: 12'6" x 12'9"
Area: 158 sq. ft
Counted as living area: Yes

Heated: Yes
Finished: Yes
Enclosed: Yes
Contiguous: Yes
Permitted: Yes
Wet space: Yes
Addition: No
Conversion: No

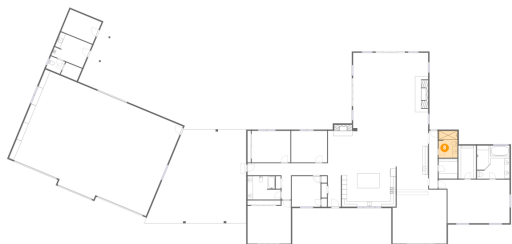
7 Floor 1 - Bedroom



Dimensions: 14'10" x 12'1"
Area: 180 sq. ft
Counted as living area: Yes

Heated: Yes
Finished: Yes
Enclosed: Yes
Contiguous: Yes
Permitted: Yes
Wet space: No
Addition: No
Conversion: No

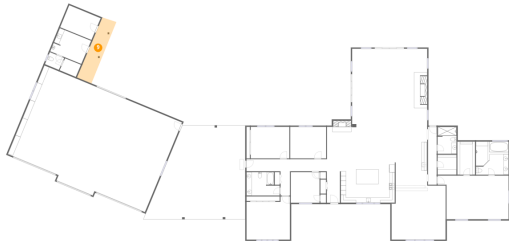
8 Floor 1 - Bath



Dimensions: 7'3" x 10'4"
Area: 74 sq. ft
Counted as living area: Yes

Heated: Yes
Finished: Yes
Enclosed: Yes
Contiguous: Yes
Permitted: Yes
Wet space: Yes
Addition: No
Conversion: No

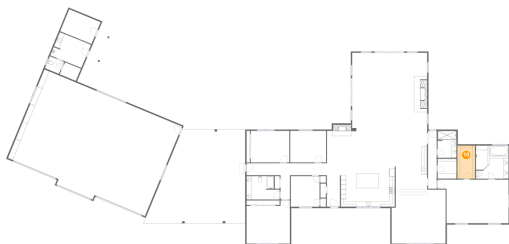
9 Floor 1 - Covered Patio



Dimensions: 5'9" x 25'2"
Area: 147 sq. ft
Counted as living area: No

Heated: No
Finished: No
Enclosed: No
Contiguous: Yes
Permitted: Yes
Wet space: No
Addition: No
Conversion: No

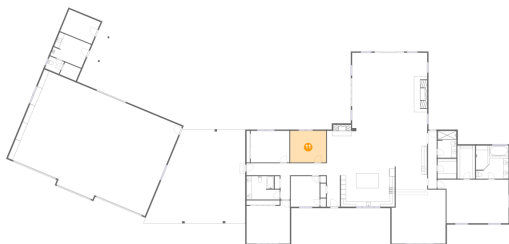
10 Floor 1 - W.I.C.



Dimensions: 6'10" x 12'9"
Area: 87 sq. ft
Counted as living area: Yes

Heated: Yes
Finished: Yes
Enclosed: Yes
Contiguous: Yes
Permitted: Yes
Wet space: No
Addition: No
Conversion: No

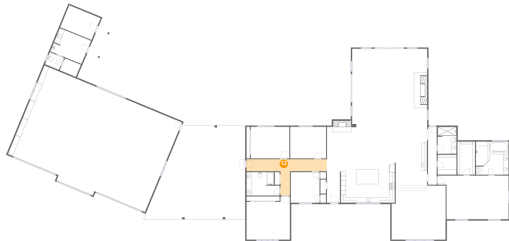
11 Floor 1 - Office



Dimensions: 13'10" x 12'1"
Area: 167 sq. ft
Counted as living area: Yes

Heated: Yes
Finished: Yes
Enclosed: Yes
Contiguous: Yes
Permitted: Yes
Wet space: No
Addition: No
Conversion: No

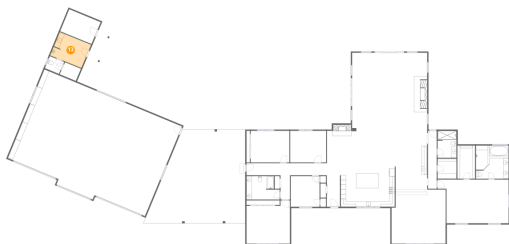
12 Floor 1 - Hall



Dimensions: 30'10" x 13'11"
Area: 176 sq. ft
Counted as living area: Yes

Heated: Yes
Finished: Yes
Enclosed: Yes
Contiguous: Yes
Permitted: Yes
Wet space: No
Addition: No
Conversion: No

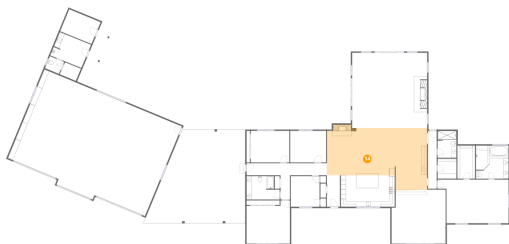
13 Floor 1 - Bath



Dimensions: 12'11" x 9'8"
Area: 124 sq. ft
Counted as living area: Yes

Heated: Yes
Finished: Yes
Enclosed: Yes
Contiguous: Yes
Permitted: Yes
Wet space: No
Addition: No
Conversion: No

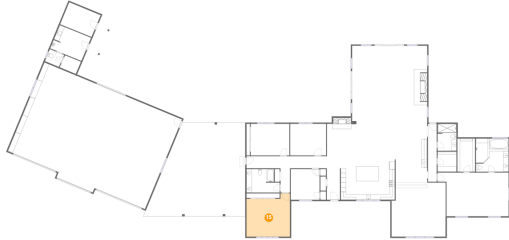
14 Floor 1 - Living Room



Dimensions: 38'6" x 13'6"
Area: 772 sq. ft
Counted as living area: Yes

Heated: Yes
Finished: Yes
Enclosed: Yes
Contiguous: Yes
Permitted: Yes
Wet space: No
Addition: No
Conversion: No

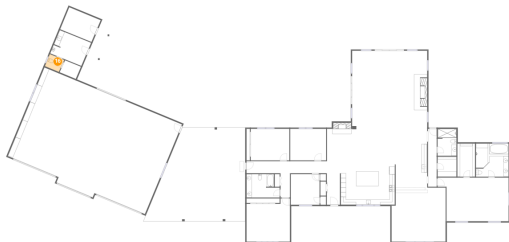
15 Floor 1 - Bedroom



Dimensions: 16'8" x 16'7"
Area: 250 sq. ft
Counted as living area: Yes

Heated: Yes
Finished: Yes
Enclosed: Yes
Contiguous: Yes
Permitted: Yes
Wet space: No
Addition: No
Conversion: No

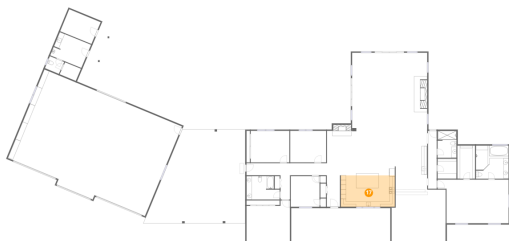
16 Floor 1 - Bath



Dimensions: 5'10" x 4'11"
Area: 29 sq. ft
Counted as living area: Yes

Heated: Yes
Finished: Yes
Enclosed: Yes
Contiguous: Yes
Permitted: Yes
Wet space: No
Addition: No
Conversion: No

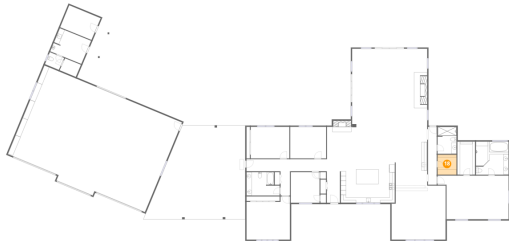
17 Floor 1 - Kitchen



Dimensions: 20'9" x 12'0"
Area: 250 sq. ft
Counted as living area: Yes

Heated: Yes
Finished: Yes
Enclosed: Yes
Contiguous: Yes
Permitted: Yes
Wet space: No
Addition: No
Conversion: No

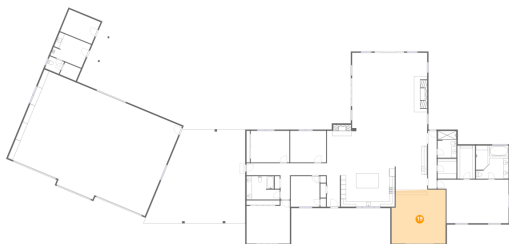
18 Floor 1 - W.I.C.



Dimensions: 7'3" x 7'8"
Area: 56 sq. ft
Counted as living area: Yes

Heated: Yes
Finished: Yes
Enclosed: Yes
Contiguous: Yes
Permitted: Yes
Wet space: No
Addition: No
Conversion: No

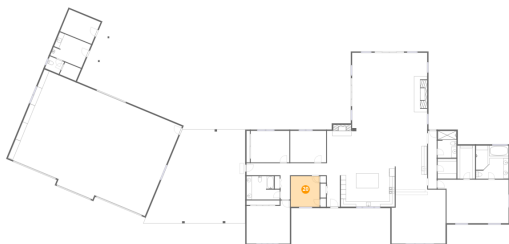
19 Floor 1 - Dining Area



Dimensions: 20'9" x 20'9"
Area: 418 sq. ft
Counted as living area: Yes

Heated: Yes
Finished: Yes
Enclosed: Yes
Contiguous: Yes
Permitted: Yes
Wet space: No
Addition: No
Conversion: No

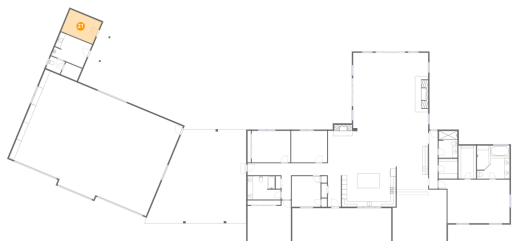
20 Floor 1 - Bedroom



Dimensions: 11'1" x 11'9"
Area: 130 sq. ft
Counted as living area: Yes

Heated: Yes
Finished: Yes
Enclosed: Yes
Contiguous: Yes
Permitted: Yes
Wet space: No
Addition: No
Conversion: No

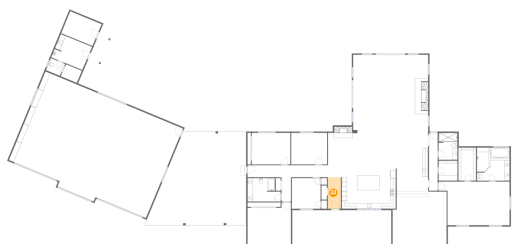
21 Floor 1 - Storage



Dimensions: 13'0" x 9'1"
Area: 118 sq. ft
Counted as living area: No

Heated: No
Finished: No
Enclosed: No
Contiguous: Yes
Permitted: Yes
Wet space: No
Addition: No
Conversion: No

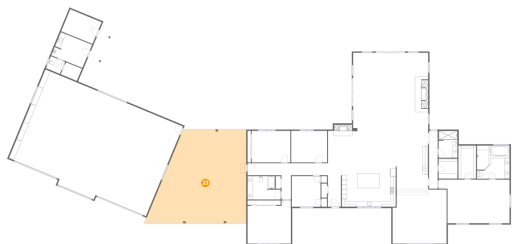
22 Floor 1 - Foyer



Dimensions: 5'0" x 12'1"
Area: 61 sq. ft
Counted as living area: Yes

Heated: Yes
Finished: Yes
Enclosed: Yes
Contiguous: Yes
Permitted: Yes
Wet space: No
Addition: No
Conversion: No

23 Floor 1 - Carport



Dimensions: 39'1" x 36'0"
Area: 1141 sq. ft
Counted as living area: No

Heated: No
Finished: Yes
Enclosed: No
Contiguous: Yes
Permitted: Yes
Wet space: No
Addition: No
Conversion: No