

821 Porter St

Coquitlam BC V3J 5B9

Lower Level Area: 2,439 SQ.FT.

Main Level Area: 2,009 SQ.FT.

Upper Level Area: 1,472 SQ.FT.

Total Area 5,920 SQ.FT.

9



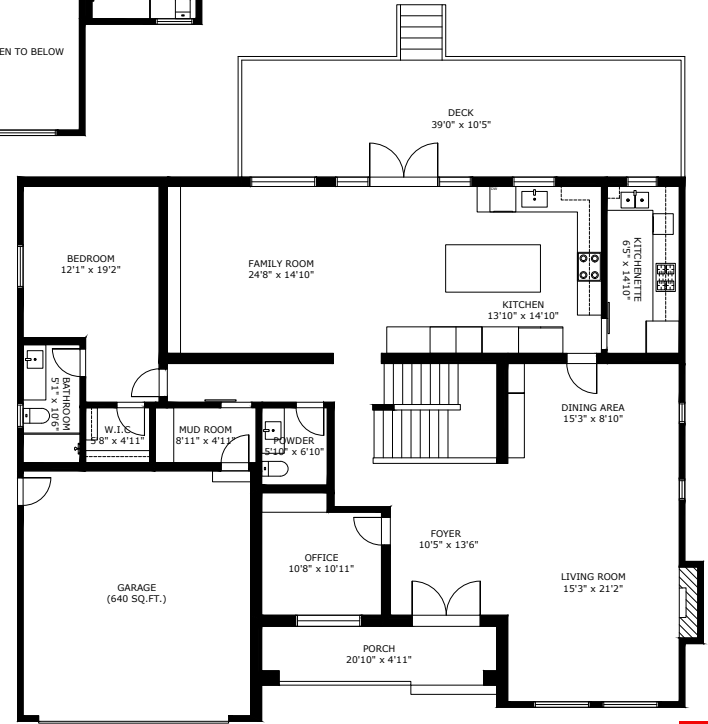
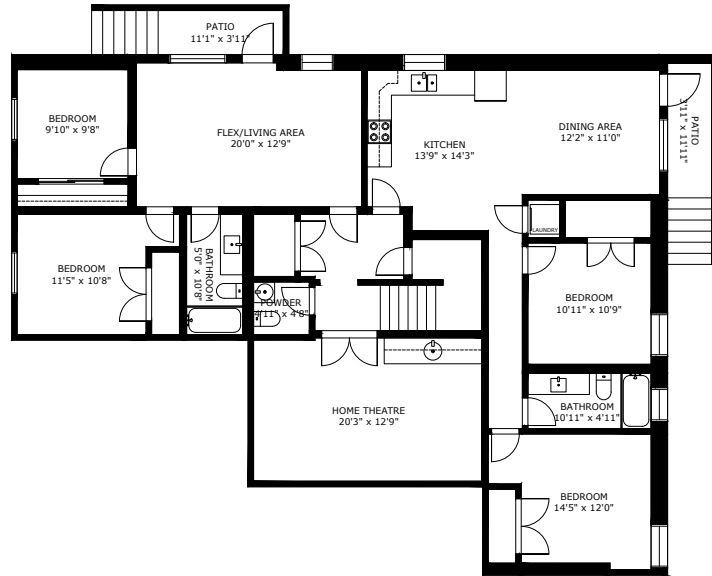
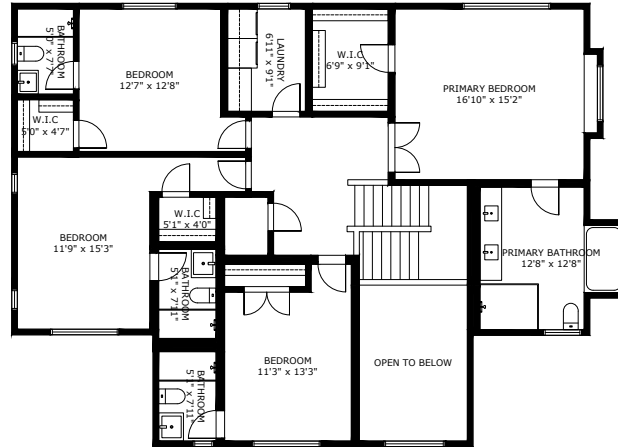
9



5,920



TOTAL SQ.FT.



821 Porter St Coquitlam, BC V3J 5B9

Measurements are approximate and may not be to scale. Gross measurements provided by agent/builder plans.

The floor plan illustration is not suitable for construction/architectural purposes.

This communication is not intended to cause or induce breach of an existing agency agreement



3D IMMERSIVE
Tours Photos Floor Plans

Professionally measured by 3D Immersive Marketing Ltd

Lead Floor Planner: *Simon Alexander*

Quality Assurance: *Francine Graham*