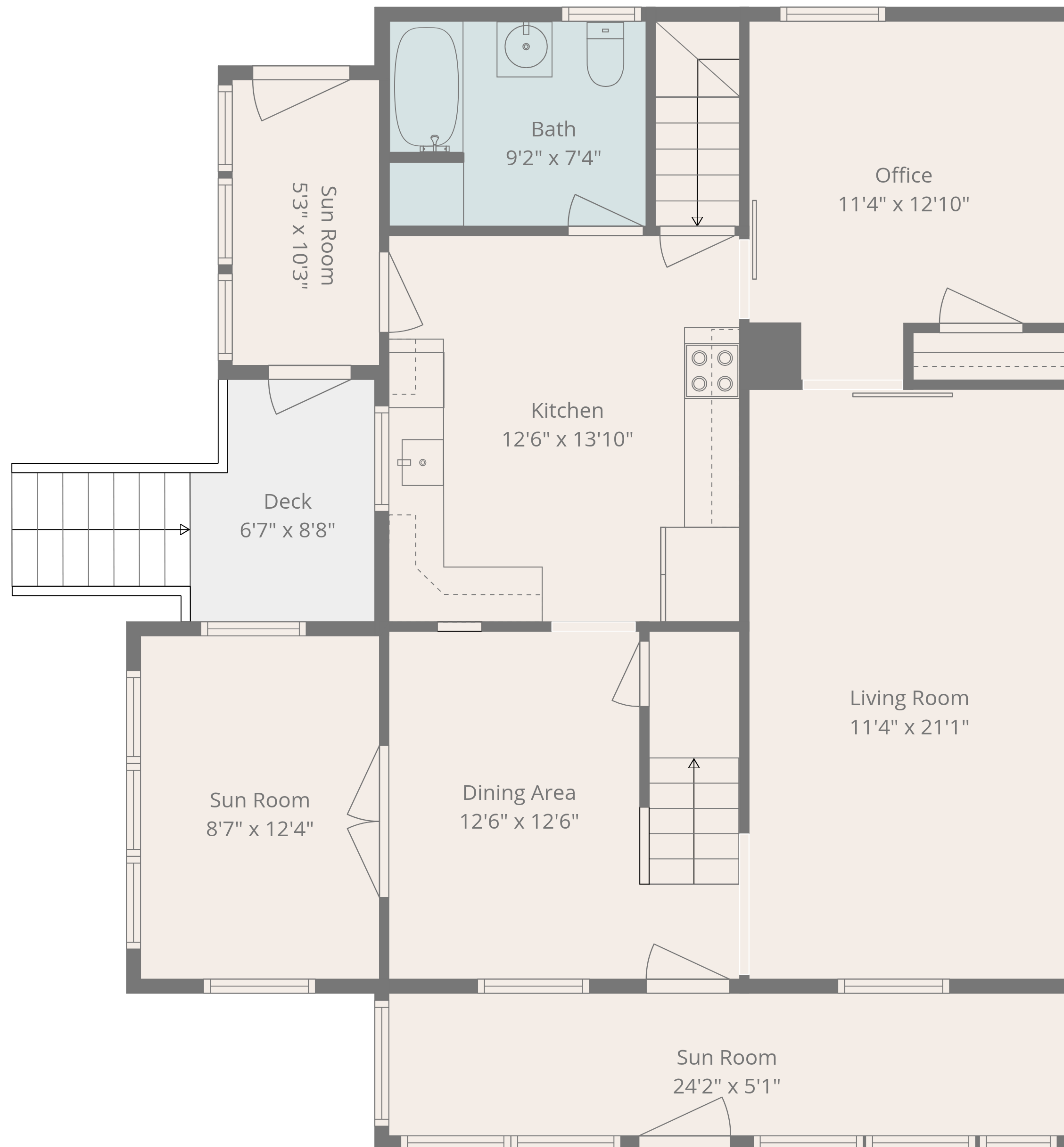


Basement
24'2" x 34'4"

TOTAL: 1738 sq. ft
Basement 1: 0 sq. ft, 1st floor: 1133 sq. ft, 2nd floor: 605 sq. ft
EXCLUDED AREAS: BASEMENT: 830 sq. ft, DECK: 53 sq. ft, WALLS: 190 sq. ft



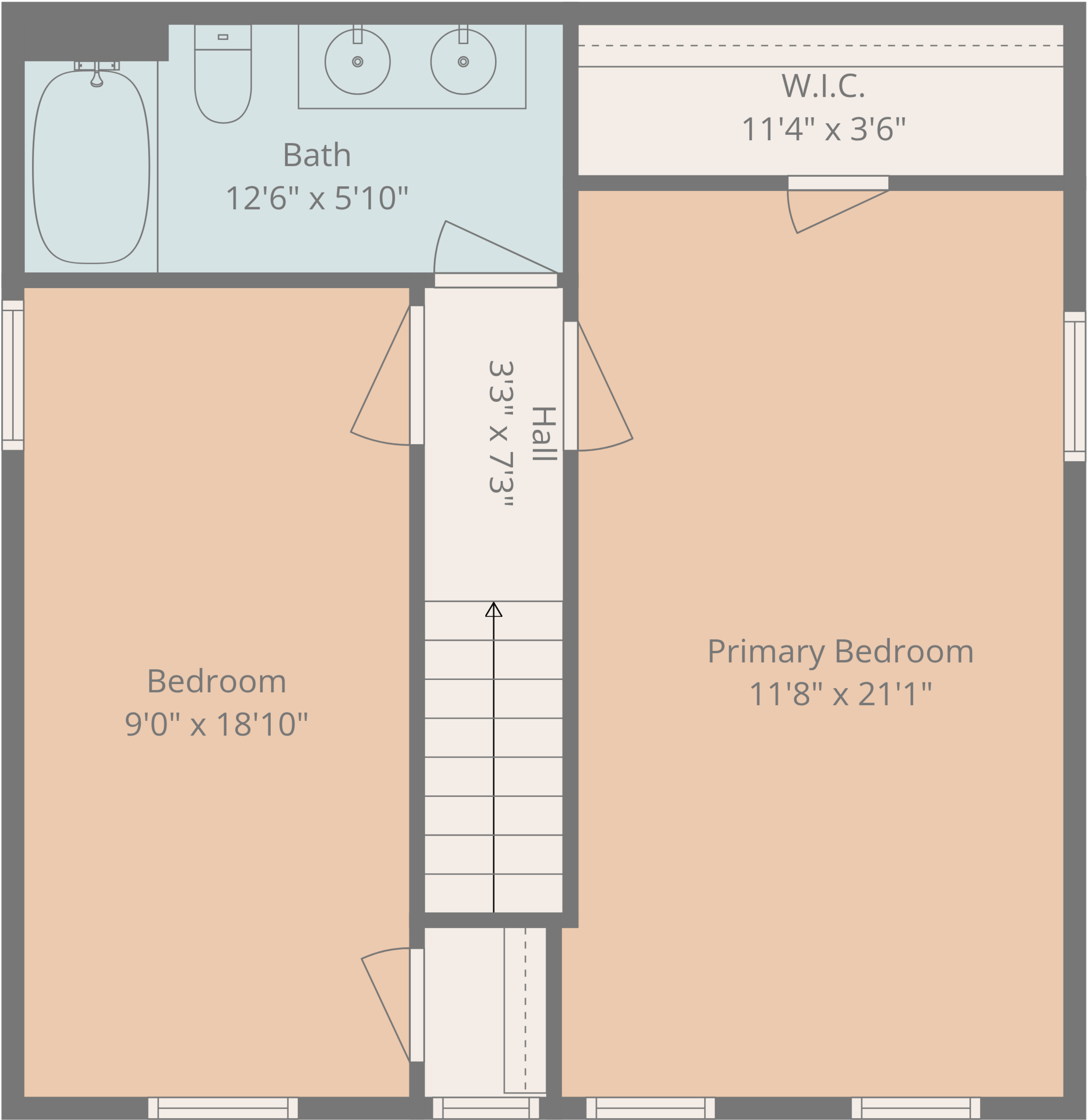


TOTAL: 1738 sq. ft

Basement 1: 0 sq. ft, 1st floor: 1133 sq. ft, 2nd floor: 605 sq. ft

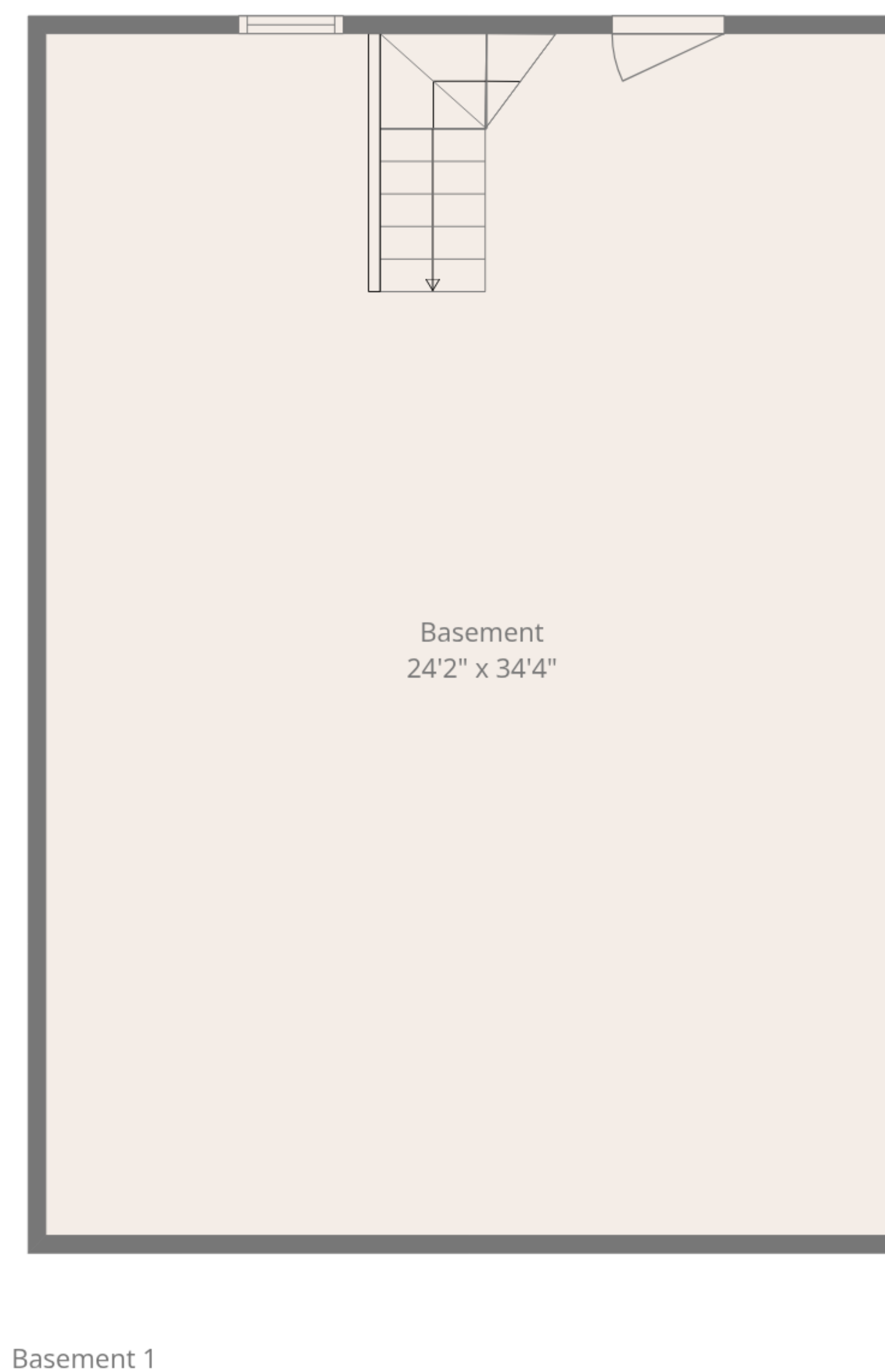
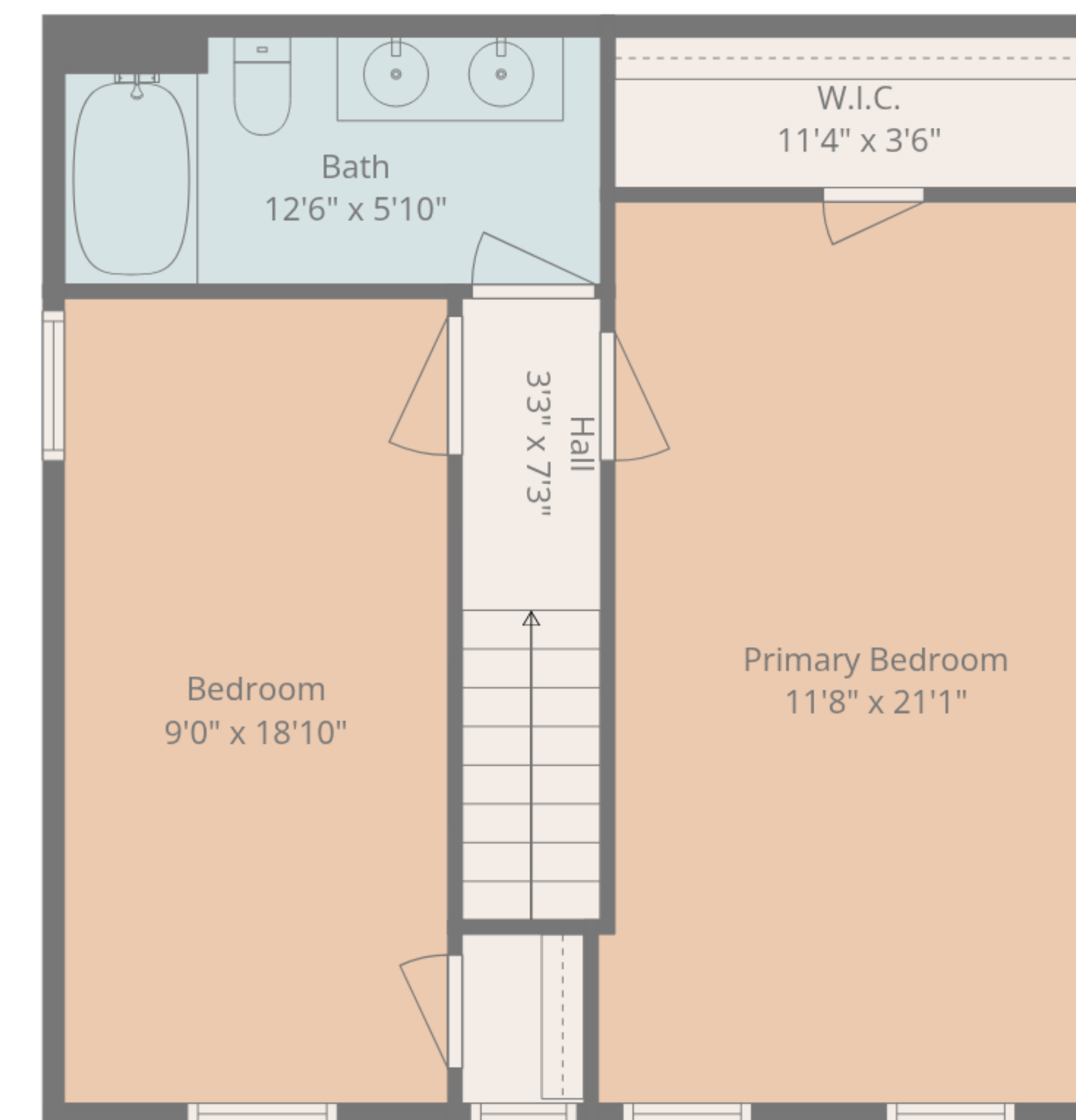
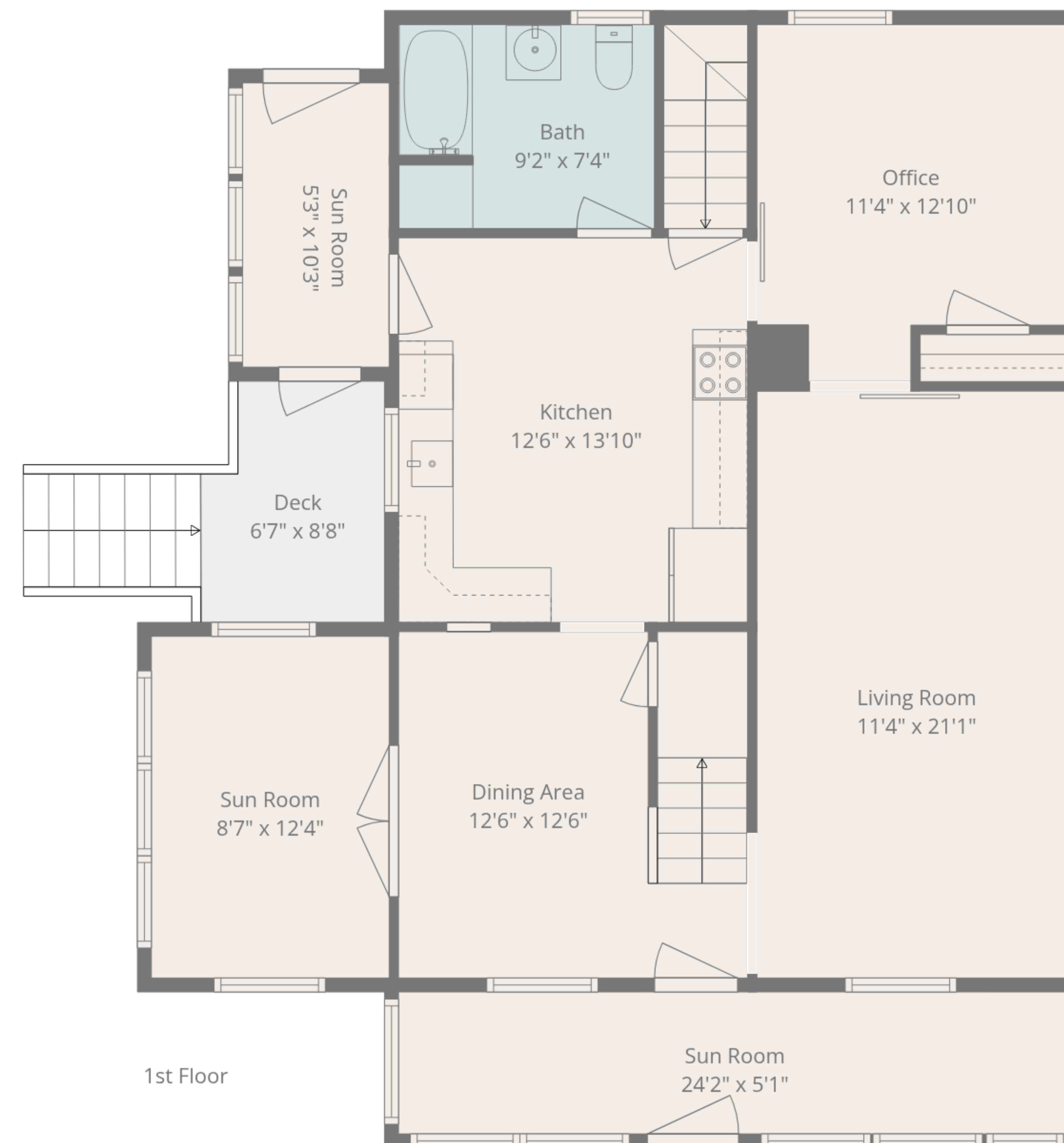
EXCLUDED AREAS: BASEMENT: 830 sq. ft, DECK: 53 sq. ft, WALLS: 190 sq. ft





TOTAL: 1738 sq. ft
Basement 1: 0 sq. ft, 1st floor: 1133 sq. ft, 2nd floor: 605 sq. ft
EXCLUDED AREAS: BASEMENT: 830 sq. ft, DECK: 53 sq. ft, WALLS: 190 sq. ft





TOTAL: 1738 sq. ft
Basement 1: 0 sq. ft, 1st floor: 1133 sq. ft, 2nd floor: 605 sq. ft
EXCLUDED AREAS: BASEMENT: 830 sq. ft, DECK: 53 sq. ft, WALLS: 190 sq. ft

