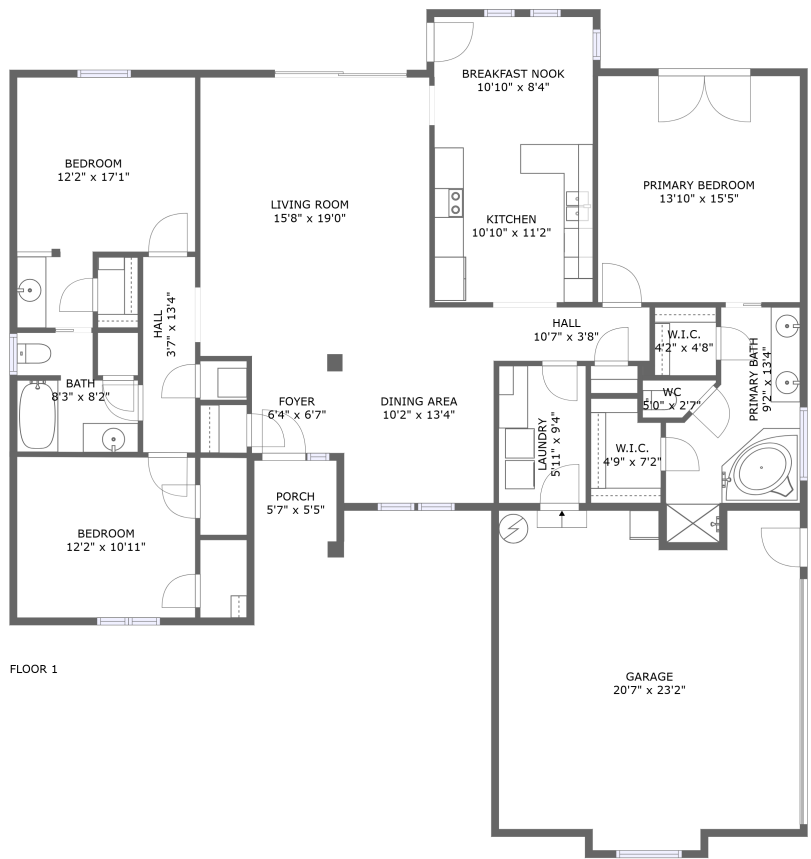


Home report

5801 Red Cedar Street, Pensacola, Escambia County, Florida,  
United States, 32507



Total Area: 1709 sq. ft

Floor 1: 1709 sq. ft

Excluded: Garage 445 sq. ft, Porch 31 sq. ft, Walls: 136 sq. ft

Property summary

1 Floors

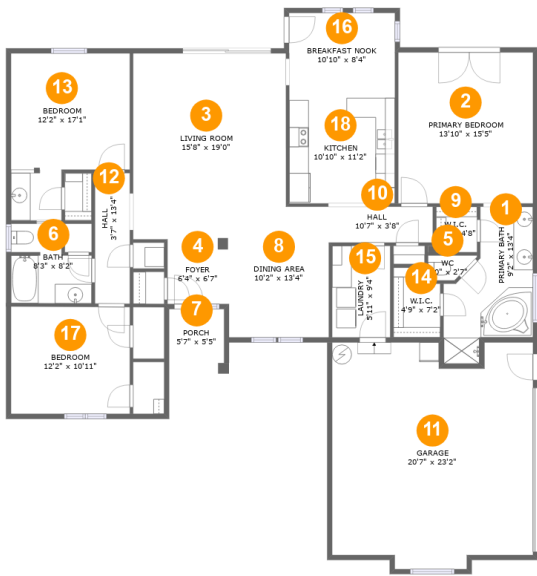
3 Bedrooms

2 Bathrooms

1 Garages

Home report

5801 Red Cedar Street, Pensacola, Escambia County, Florida,  
United States, 32507



Room dimensions

Floor 1 Total:1709sqft Excluded: 476sqft

#		Max Dimensions	sqft	Included
1	Primary Bath	9'2" x 13'4"	106 sq. ft	Yes
2	Primary Bedroom	13'10" x 15'5"	213 sq. ft	Yes
3	Living Room	15'8" x 19'0"	278 sq. ft	Yes
4	Foyer	6'4" x 6'7"	42 sq. ft	Yes
5	WC	5'0" x 2'7"	10 sq. ft	Yes
6	Bath	8'3" x 8'2"	56 sq. ft	Yes
7	Porch	5'7" x 5'5"	31 sq. ft	No
8	Dining Area	10'2" x 13'4"	137 sq. ft	Yes
9	W.I.C.	4'2" x 4'8"	20 sq. ft	Yes
10	Hall	10'7" x 3'8"	39 sq. ft	Yes
11	Garage	20'7" x 23'2"	445 sq. ft	No

## Home report

**5801 Red Cedar Street, Pensacola, Escambia County, Florida,  
United States, 32507**

#		Max Dimensions	sqft	Included
12	Hall	3'7" x 13'4"	48 sq. ft	Yes
13	Bedroom	12'2" x 17'1"	172 sq. ft	Yes
14	W.I.C.	4'9" x 7'2"	32 sq. ft	Yes
15	Laundry	5'11" x 9'4"	56 sq. ft	Yes
16	Breakfast Nook	10'10" x 8'4"	90 sq. ft	Yes
17	Bedroom	12'2" x 10'11"	133 sq. ft	Yes
18	Kitchen	10'10" x 11'2"	121 sq. ft	Yes

5801 Red Cedar Street, Pensacola, Escambia County, Florida,  
United States, 32507

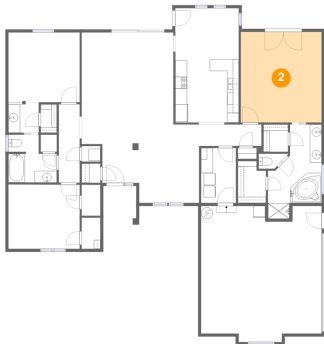
**1 Floor 1 - Primary Bath**



Max Dimensions: 9'2" x 13'4"  
Calculated Area: 106 sq. ft  
Included: Yes

Heated: Yes  
Finished: Yes  
Enclosed: Yes  
Contiguous: Yes  
Permitted: Yes  
Wet space: Yes  
Addition: No  
Conversion: No

**2 Floor 1 - Primary Bedroom**

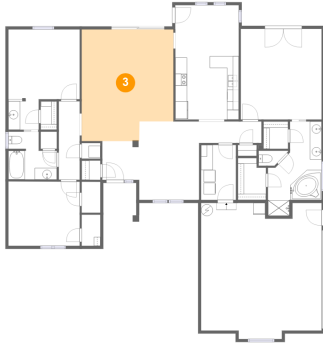


Max Dimensions: 13'10" x 15'5"  
Calculated Area: 213 sq. ft  
Included: Yes

Heated: Yes  
Finished: Yes  
Enclosed: Yes  
Contiguous: Yes  
Permitted: Yes  
Wet space: No  
Addition: No  
Conversion: No

5801 Red Cedar Street, Pensacola, Escambia County, Florida,  
United States, 32507

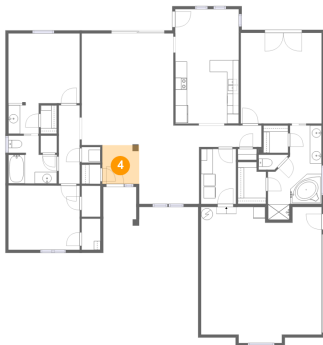
### 3 Floor 1 - Living Room



Max Dimensions: 15'8" x 19'0"  
Calculated Area: 278 sq. ft  
Included: Yes

Heated: Yes  
Finished: Yes  
Enclosed: Yes  
Contiguous: Yes  
Permitted: Yes  
Wet space: No  
Addition: No  
Conversion: No

### 4 Floor 1 - Foyer



Max Dimensions: 6'4" x 6'7"  
Calculated Area: 42 sq. ft  
Included: Yes

Heated: Yes  
Finished: Yes  
Enclosed: Yes  
Contiguous: Yes  
Permitted: Yes  
Wet space: No  
Addition: No  
Conversion: No

### 5 Floor 1 - WC



Max Dimensions: 5'0" x 2'7"  
Calculated Area: 10 sq. ft  
Included: Yes

Heated: Yes  
Finished: Yes  
Enclosed: Yes  
Contiguous: Yes  
Permitted: Yes  
Wet space: No  
Addition: No  
Conversion: No

5801 Red Cedar Street, Pensacola, Escambia County, Florida,  
United States, 32507

6 Floor 1 - Bath



Max Dimensions: 8'3" x 8'2"  
Calculated Area: 56 sq. ft  
Included: Yes

Heated: Yes  
Finished: Yes  
Enclosed: Yes  
Contiguous: Yes  
Permitted: Yes  
Wet space: Yes  
Addition: No  
Conversion: No

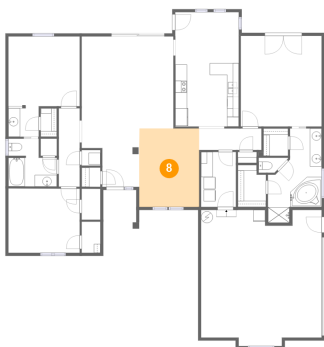
7 Floor 1 - Porch



Max Dimensions: 5'7" x 5'5"  
Calculated Area: 31 sq. ft  
Included: No

Heated: No  
Finished: Yes  
Enclosed: No  
Contiguous: Yes  
Permitted: Yes  
Wet space: No  
Addition: No  
Conversion: No

8 Floor 1 - Dining Area



Max Dimensions: 10'2" x 13'4"  
Calculated Area: 137 sq. ft  
Included: Yes

Heated: Yes  
Finished: Yes  
Enclosed: Yes  
Contiguous: Yes  
Permitted: Yes  
Wet space: No  
Addition: No  
Conversion: No

5801 Red Cedar Street, Pensacola, Escambia County, Florida,  
United States, 32507

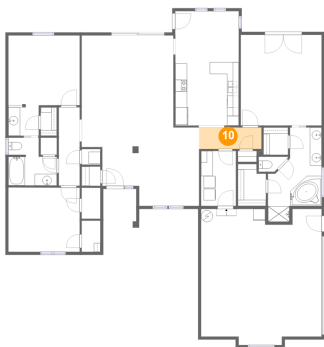
9 Floor 1 - W.I.C.



Max Dimensions: 4'2" x 4'8"  
Calculated Area: 20 sq. ft  
Included: Yes

Heated: Yes  
Finished: Yes  
Enclosed: Yes  
Contiguous: Yes  
Permitted: Yes  
Wet space: No  
Addition: No  
Conversion: No

10 Floor 1 - Hall



Max Dimensions: 10'7" x 3'8"  
Calculated Area: 39 sq. ft  
Included: Yes

Heated: Yes  
Finished: Yes  
Enclosed: Yes  
Contiguous: Yes  
Permitted: Yes  
Wet space: No  
Addition: No  
Conversion: No

11 Floor 1 - Garage

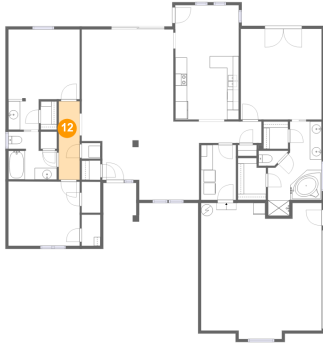


Max Dimensions: 20'7" x 23'2"  
Calculated Area: 445 sq. ft  
Included: No

Heated: No  
Finished: No  
Enclosed: Yes  
Contiguous: Yes  
Permitted: Yes  
Wet space: No  
Addition: No  
Conversion: No

5801 Red Cedar Street, Pensacola, Escambia County, Florida,  
United States, 32507

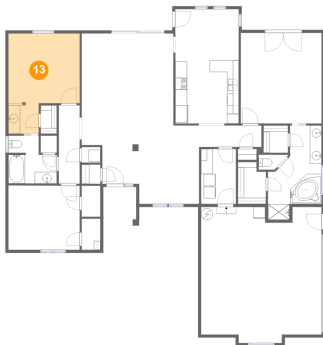
## 12 Floor 1 - Hall



Max Dimensions: 3'7" x 13'4"  
Calculated Area: 48 sq. ft  
Included: Yes

Heated: Yes  
Finished: Yes  
Enclosed: Yes  
Contiguous: Yes  
Permitted: Yes  
Wet space: No  
Addition: No  
Conversion: No

## 13 Floor 1 - Bedroom



Max Dimensions: 12'2" x 17'1"  
Calculated Area: 172 sq. ft  
Included: Yes

Heated: Yes  
Finished: Yes  
Enclosed: Yes  
Contiguous: Yes  
Permitted: Yes  
Wet space: No  
Addition: No  
Conversion: No

## 14 Floor 1 - W.I.C.



Max Dimensions: 4'9" x 7'2"  
Calculated Area: 32 sq. ft  
Included: Yes

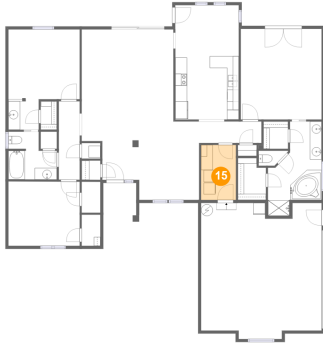
Heated: Yes  
Finished: Yes  
Enclosed: Yes  
Contiguous: Yes  
Permitted: Yes  
Wet space: No  
Addition: No  
Conversion: No



5801 Red Cedar Street, Pensacola, Escambia County, Florida,  
United States, 32507

### 15 Floor 1 - Laundry

---

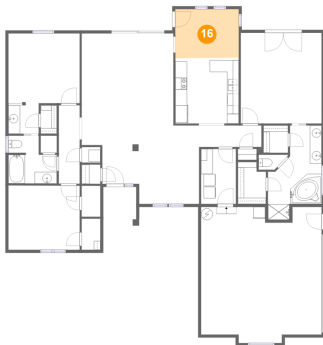


Max Dimensions: 5'11" x 9'4"  
Calculated Area: 56 sq. ft  
Included: Yes

Heated: Yes  
Finished: Yes  
Enclosed: Yes  
Contiguous: Yes  
Permitted: Yes  
Wet space: No  
Addition: No  
Conversion: No

### 16 Floor 1 - Breakfast Nook

---

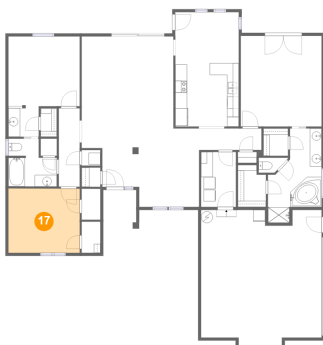


Max Dimensions: 10'10" x 8'4"  
Calculated Area: 90 sq. ft  
Included: Yes

Heated: Yes  
Finished: Yes  
Enclosed: Yes  
Contiguous: Yes  
Permitted: Yes  
Wet space: No  
Addition: No  
Conversion: No

### 17 Floor 1 - Bedroom

---

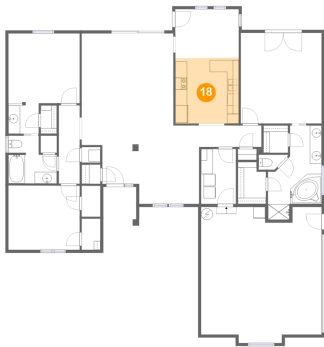


Max Dimensions: 12'2" x 10'11"  
Calculated Area: 133 sq. ft  
Included: Yes

Heated: Yes  
Finished: Yes  
Enclosed: Yes  
Contiguous: Yes  
Permitted: Yes  
Wet space: No  
Addition: No  
Conversion: No

5801 Red Cedar Street, Pensacola, Escambia County, Florida,  
United States, 32507

**18** Floor 1 - Kitchen



Max Dimensions: 10'10" x  
11'2"  
Calculated Area: 121 sq. ft  
Included: Yes

Heated: Yes  
Finished: Yes  
Enclosed: Yes  
Contiguous:  
Yes  
Permitted: Yes  
Wet space: No  
Addition: No  
Conversion: No