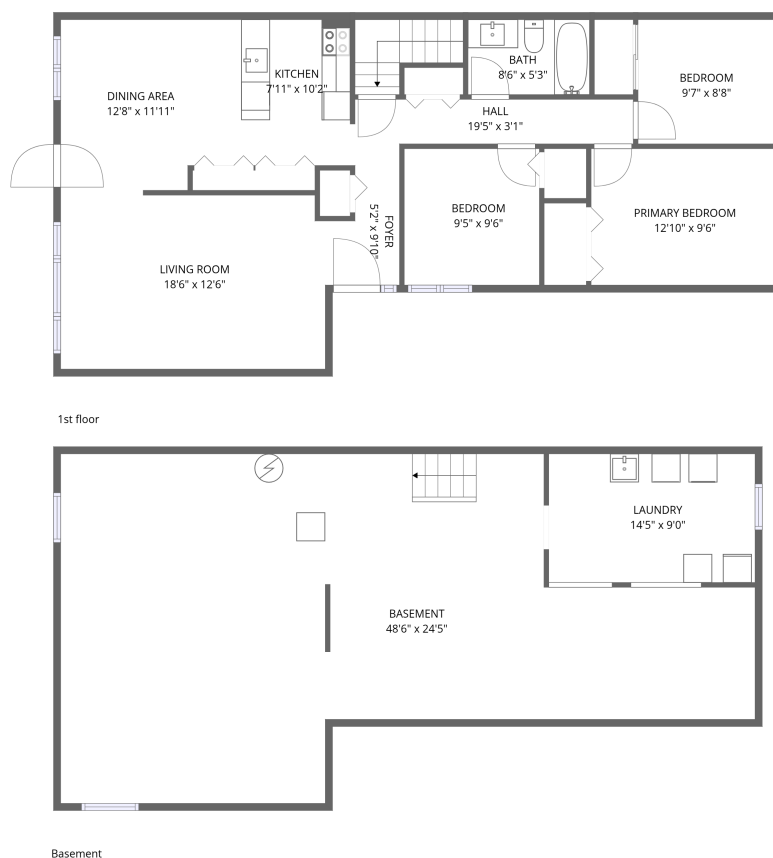


Home data report

1332 Henry Farm Drive, Braemar Park, St. Claire Gardens,
Ottawa, Ontario, Canada, K2C 2E4



Total Area: 1036 sq. ft

Basement: 0 sq. ft, 1st Floor: 1036 sq. ft

Excluded: Basement 877 sq. ft, Laundry 133 sq. ft, Walls: 123 sq. ft

Property summary

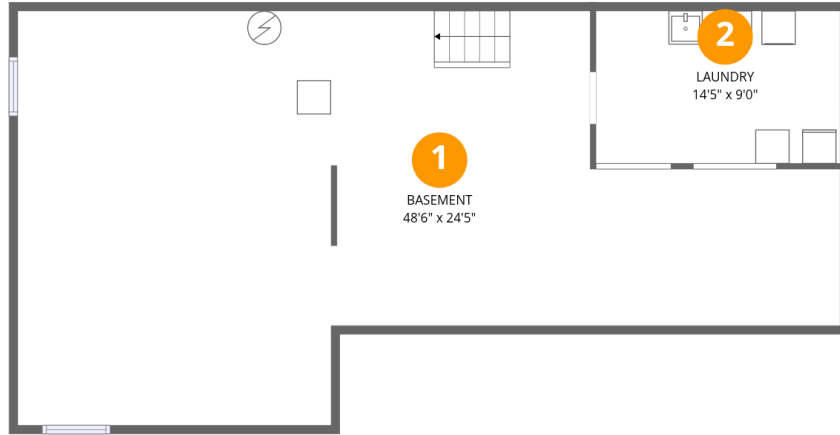
 **2**
Floors

 **3**
Bedrooms

 **1**
Bathrooms

Home data report

1332 Henry Farm Drive, Braemar Park, St. Claire Gardens,
Ottawa, Ontario, Canada, K2C 2E4



Room dimensions

Floor 1 Below grade

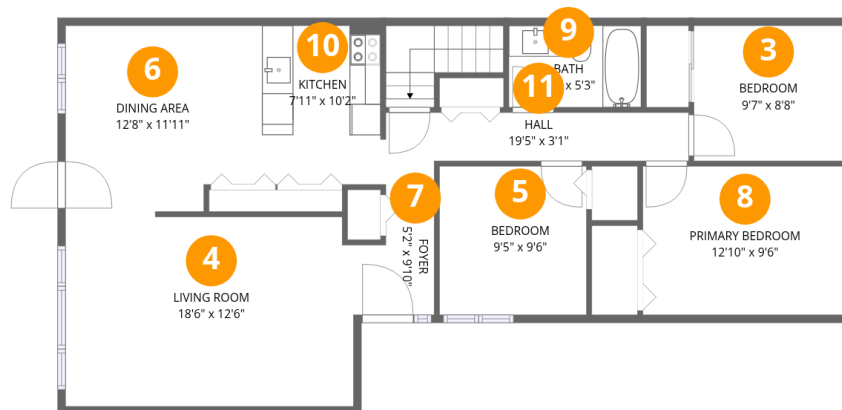
Total:0sqft

Excluded: 1010sqft

#		Dimensions	sqft	Counted as living area
1	Basement	48'6" x 24'5"	1186 sq. ft	No
2	Laundry	14'5" x 9'0"	129 sq. ft	No

Home data report

1332 Henry Farm Drive, Braemar Park, St. Claire Gardens,
Ottawa, Ontario, Canada, K2C 2E4



Room dimensions

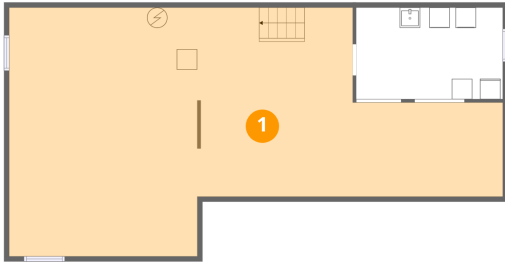
Floor 2

Total:1036sqft Excluded: 0sqft

#		Dimensions	sqft	Counted as living area
3	Bedroom	9'7" x 8'8"	83 sq. ft	Yes
4	Living Room	18'6" x 12'6"	231 sq. ft	Yes
5	Bedroom	9'5" x 9'6"	90 sq. ft	Yes
6	Dining Area	12'8" x 11'11"	151 sq. ft	Yes
7	Foyer	5'2" x 9'10"	51 sq. ft	Yes
8	Primary Bedroom	12'10" x 9'6"	123 sq. ft	Yes
9	Bath	8'6" x 5'3"	45 sq. ft	Yes
10	Kitchen	7'11" x 10'2"	81 sq. ft	Yes
11	Hall	19'5" x 3'1"	60 sq. ft	Yes

1332 Henry Farm Drive, Braemar Park, St. Claire Gardens,
Ottawa, Ontario, Canada, K2C 2E4

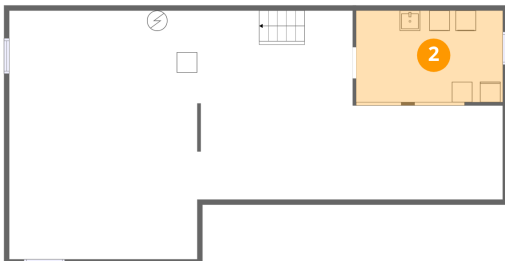
1 Floor 1 - Basement



Dimensions: 48'6" x 24'5"
Area: 1186 sq. ft
Counted as living area: No

Heated: Yes
Finished: No
Enclosed: Yes
Contiguous: Yes
Permitted: Yes
Wet space: No
Addition: No
Conversion: No

2 Floor 1 - Laundry

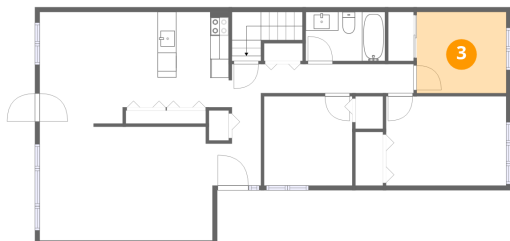


Dimensions: 14'5" x 9'0"
Area: 129 sq. ft
Counted as living area: No

Heated: Yes
Finished: No
Enclosed: Yes
Contiguous: Yes
Permitted: Yes
Wet space: No
Addition: No
Conversion: No

1332 Henry Farm Drive, Braemar Park, St. Claire Gardens,
Ottawa, Ontario, Canada, K2C 2E4

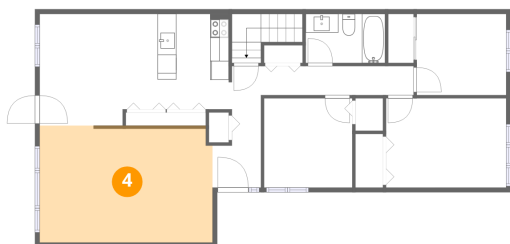
3 Floor 2 - Bedroom



Dimensions: 9'7" x 8'8"
Area: 83 sq. ft
Counted as living area: Yes

Heated: Yes
Finished: Yes
Enclosed: Yes
Contiguous: Yes
Permitted: Yes
Wet space: No
Addition: No
Conversion: No

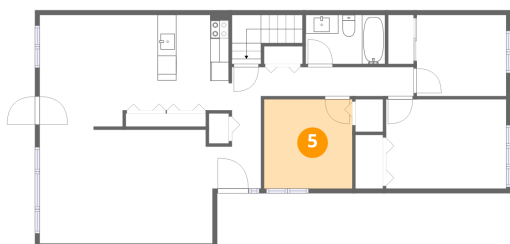
4 Floor 2 - Living Room



Dimensions: 18'6" x 12'6"
Area: 231 sq. ft
Counted as living area: Yes

Heated: Yes
Finished: Yes
Enclosed: Yes
Contiguous: Yes
Permitted: Yes
Wet space: No
Addition: No
Conversion: No

5 Floor 2 - Bedroom

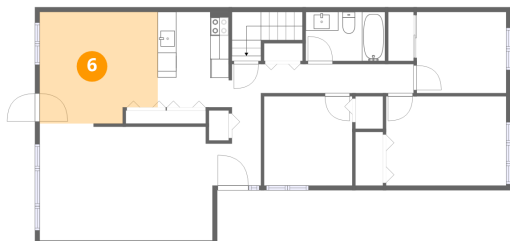


Dimensions: 9'5" x 9'6"
Area: 90 sq. ft
Counted as living area: Yes

Heated: Yes
Finished: Yes
Enclosed: Yes
Contiguous: Yes
Permitted: Yes
Wet space: No
Addition: No
Conversion: No

1332 Henry Farm Drive, Braemar Park, St. Claire Gardens,
Ottawa, Ontario, Canada, K2C 2E4

6 Floor 2 - Dining Area



Dimensions: 12'8" x 11'11"
Area: 151 sq. ft
Counted as living area: Yes

Heated: Yes
Finished: Yes
Enclosed: Yes
Contiguous: Yes
Permitted: Yes
Wet space: No
Addition: No
Conversion: No

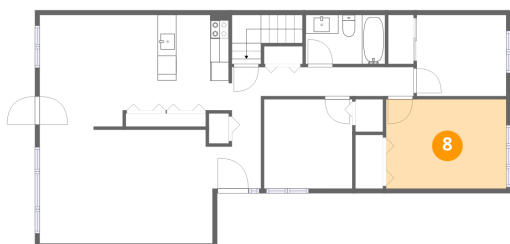
7 Floor 2 - Foyer



Dimensions: 5'2" x 9'10"
Area: 51 sq. ft
Counted as living area: Yes

Heated: Yes
Finished: Yes
Enclosed: Yes
Contiguous: Yes
Permitted: Yes
Wet space: No
Addition: No
Conversion: No

8 Floor 2 - Primary Bedroom

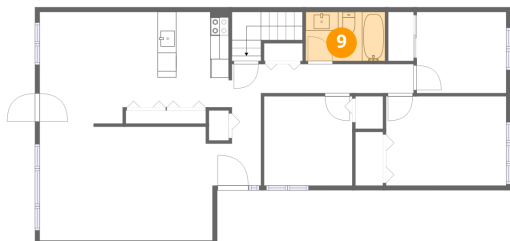


Dimensions: 12'10" x 9'6"
Area: 123 sq. ft
Counted as living area: Yes

Heated: Yes
Finished: Yes
Enclosed: Yes
Contiguous: Yes
Permitted: Yes
Wet space: No
Addition: No
Conversion: No

1332 Henry Farm Drive, Braemar Park, St. Claire Gardens,
Ottawa, Ontario, Canada, K2C 2E4

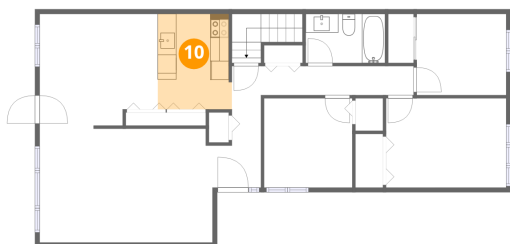
9 Floor 2 - Bath



Dimensions: 8'6" x 5'3"
Area: 45 sq. ft
Counted as living area: Yes

Heated: Yes
Finished: Yes
Enclosed: Yes
Contiguous: Yes
Permitted: Yes
Wet space: Yes
Addition: No
Conversion: No

10 Floor 2 - Kitchen



Dimensions: 7'11" x 10'2"
Area: 81 sq. ft
Counted as living area: Yes

Heated: Yes
Finished: Yes
Enclosed: Yes
Contiguous: Yes
Permitted: Yes
Wet space: No
Addition: No
Conversion: No

11 Floor 2 - Hall



Dimensions: 19'5" x 3'1"
Area: 60 sq. ft
Counted as living area: Yes

Heated: Yes
Finished: Yes
Enclosed: Yes
Contiguous: Yes
Permitted: Yes
Wet space: No
Addition: No
Conversion: No