

# Home data report

## 362 McGarry Rd, Maynooth, ON, CA



**Total Area: 2686 sq. ft**

Basement: 1296 sq. ft, 1st Floor: 1390 sq. ft

Excluded: Utility 48 sq. ft, Garage 753 sq. ft, Deck 600 sq. ft, Porch 153 sq. ft, Walls: 231 sq. ft

### Property summary

 **2** Floors

 **3** Bedrooms

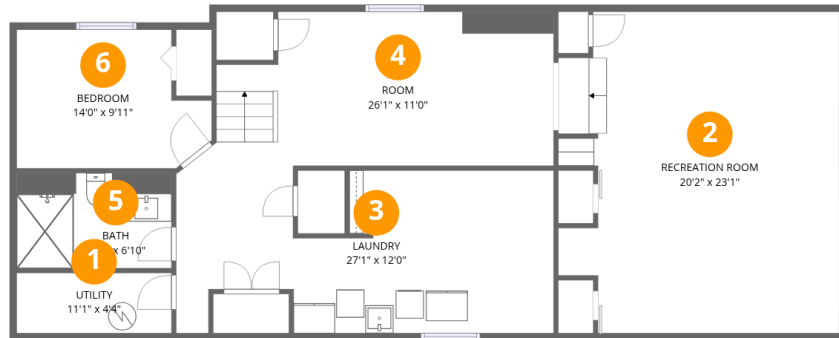
 **2** Bathrooms

Home data report

# 362 McGarry Rd, Maynooth, ON, CA

 **1**  
Half baths

 **1**  
Garages



## Room dimensions

Floor 1 Below grade

Total:1296sqft Excluded: 48sqft

#		Dimensions	sqft	Counted as living area
1	Utility	11'1" x 4'4"	48 sq. ft	No
2	Recreation Room	20'2" x 23'1"	431 sq. ft	Yes
3	Laundry	27'1" x 12'0"	279 sq. ft	Yes
4	Room	26'1" x 11'0"	252 sq. ft	Yes
5	Bath	11'1" x 6'10"	76 sq. ft	Yes
6	Bedroom	14'0" x 9'11"	122 sq. ft	Yes



## Room dimensions

Floor 2

Total: 1390sqft

Excluded: 1506sqft

#		Dimensions	sqft	Counted as living area
7	Bath	6'10" x 4'2"	28 sq. ft	Yes
8	Deck	22'11" x 45'10"	600 sq. ft	No
9	Hall	12'5" x 3'4"	42 sq. ft	Yes
10	Porch	23'1" x 5'10"	153 sq. ft	No
11	Bath	5'3" x 9'8"	51 sq. ft	Yes
12	Bedroom	10'3" x 9'8"	84 sq. ft	Yes
13	Hall	6'7" x 3'10"	47 sq. ft	Yes
14	Dining Area	21'2" x 13'0"	265 sq. ft	Yes
15	Living Room	18'10" x 23'5"	435 sq. ft	Yes
16	Garage	20'1" x 39'2"	753 sq. ft	No
17	Primary Bedroom	11'11" x 23'1"	229 sq. ft	Yes

Home data report

**362 McGarry Rd,Maynooth,ON,CA**

#		Dimensions	sqft	Counted as living area
18	Kitchen	13'8" x 10'0"	138 sq. ft	Yes

## 1 Floor 1 - Utility



Dimensions: 11'1" x 4'4"  
Area: 48 sq. ft  
Counted as living area: No

Heated: Yes  
Finished: No  
Enclosed: Yes  
Contiguous: Yes  
Permitted: Yes  
Wet space: No  
Addition: No  
Conversion: No

## 2 Floor 1 - Recreation Room



Dimensions: 20'2" x 23'1"  
Area: 431 sq. ft  
Counted as living area: Yes

Heated: Yes  
Finished: Yes  
Enclosed: Yes  
Contiguous: Yes  
Permitted: Yes  
Wet space: No  
Addition: No  
Conversion: No

### 3 Floor 1 - Laundry



Dimensions: 27'1" x 12'0"  
Area: 279 sq. ft  
Counted as living area: Yes

Heated: Yes  
Finished: Yes  
Enclosed: Yes  
Contiguous: Yes  
Permitted: Yes  
Wet space: No  
Addition: No  
Conversion: No

### 4 Floor 1 - Room



Dimensions: 26'1" x 11'0"  
Area: 252 sq. ft  
Counted as living area: Yes

Heated: Yes  
Finished: Yes  
Enclosed: Yes  
Contiguous: Yes  
Permitted: Yes  
Wet space: No  
Addition: No  
Conversion: No

### 5 Floor 1 - Bath



Dimensions: 11'1" x 6'10"  
Area: 76 sq. ft  
Counted as living area: Yes

Heated: Yes  
Finished: Yes  
Enclosed: Yes  
Contiguous: Yes  
Permitted: Yes  
Wet space: Yes  
Addition: No  
Conversion: No

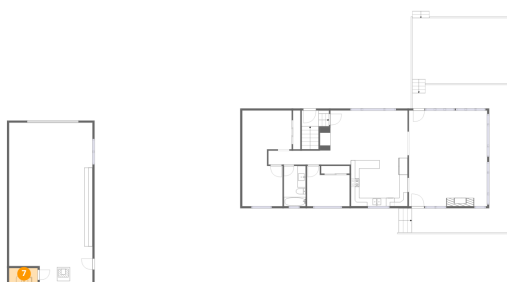
## 6 Floor 1 - Bedroom



Dimensions: 14'0" x 9'11"  
Area: 122 sq. ft  
Counted as living area: Yes

Heated: Yes  
Finished: Yes  
Enclosed: Yes  
Contiguous: Yes  
Permitted: Yes  
Wet space: No  
Addition: No  
Conversion: No

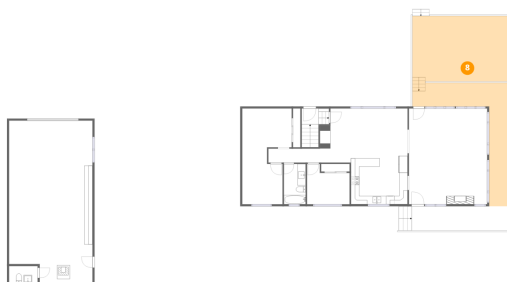
## 7 Floor 2 - Bath



Dimensions: 6'10" x 4'2"  
Area: 28 sq. ft  
Counted as living area: Yes

Heated: Yes  
Finished: Yes  
Enclosed: Yes  
Contiguous: Yes  
Permitted: Yes  
Wet space: Yes  
Addition: No  
Conversion: No

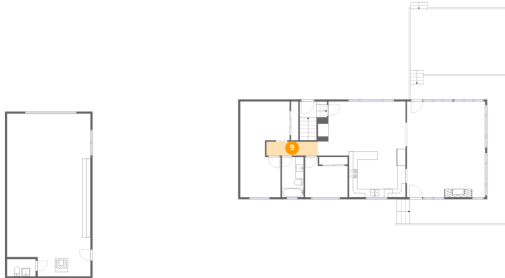
## 8 Floor 2 - Deck



Dimensions: 22'11" x 45'10"  
Area: 600 sq. ft  
Counted as living area: No

Heated: No  
Finished: No  
Enclosed: No  
Contiguous: Yes  
Permitted: Yes  
Wet space: No  
Addition: No  
Conversion: No

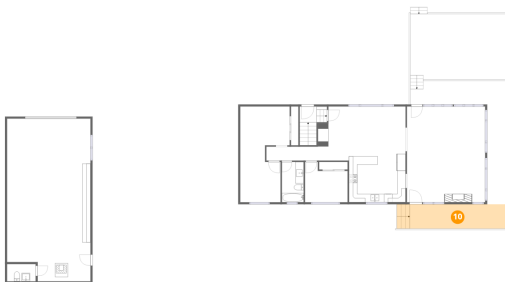
### 9 Floor 2 - Hall



Dimensions: 12'5" x 3'4"  
Area: 42 sq. ft  
Counted as living area: Yes

Heated: Yes  
Finished: Yes  
Enclosed: Yes  
Contiguous: Yes  
Permitted: Yes  
Wet space: No  
Addition: No  
Conversion: No

### 10 Floor 2 - Porch



Dimensions: 23'1" x 5'10"  
Area: 153 sq. ft  
Counted as living area: No

Heated: No  
Finished: No  
Enclosed: No  
Contiguous: Yes  
Permitted: Yes  
Wet space: No  
Addition: No  
Conversion: No

### 11 Floor 2 - Bath



Dimensions: 5'3" x 9'8"  
Area: 51 sq. ft  
Counted as living area: Yes

Heated: Yes  
Finished: Yes  
Enclosed: Yes  
Contiguous: Yes  
Permitted: Yes  
Wet space: Yes  
Addition: No  
Conversion: No

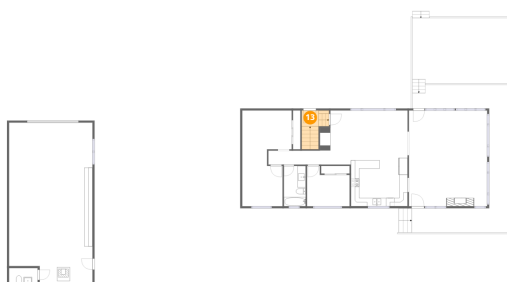
## 12 Floor 2 - Bedroom



Dimensions: 10'3" x 9'8"  
Area: 84 sq. ft  
Counted as living area: Yes

Heated: Yes  
Finished: Yes  
Enclosed: Yes  
Contiguous: Yes  
Permitted: Yes  
Wet space: No  
Addition: No  
Conversion: No

## 13 Floor 2 - Hall



Dimensions: 6'7" x 3'10"  
Area: 47 sq. ft  
Counted as living area: Yes

Heated: Yes  
Finished: Yes  
Enclosed: Yes  
Contiguous: Yes  
Permitted: Yes  
Wet space: No  
Addition: No  
Conversion: No

## 14 Floor 2 - Dining Area

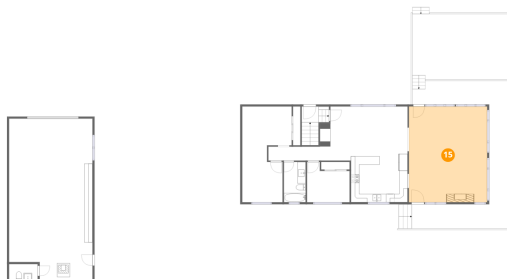


Dimensions: 21'2" x 13'0"  
Area: 265 sq. ft  
Counted as living area: Yes

Heated: Yes  
Finished: Yes  
Enclosed: Yes  
Contiguous: Yes  
Permitted: Yes  
Wet space: No  
Addition: No  
Conversion: No

### 15 Floor 2 - Living Room

---

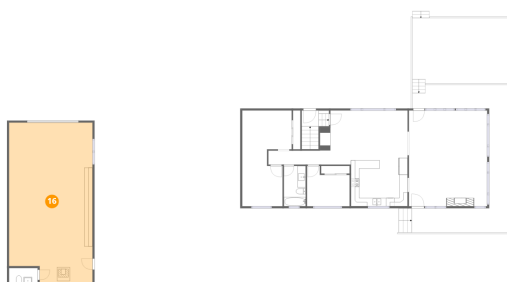


Dimensions: 18'10" x 23'5"  
Area: 435 sq. ft  
Counted as living area: Yes

Heated: Yes  
Finished: Yes  
Enclosed: Yes  
Contiguous: Yes  
Permitted: Yes  
Wet space: No  
Addition: No  
Conversion: No

### 16 Floor 2 - Garage

---



Dimensions: 20'1" x 39'2"  
Area: 753 sq. ft  
Counted as living area: No

Heated: No  
Finished: No  
Enclosed: Yes  
Contiguous: Yes  
Permitted: Yes  
Wet space: No  
Addition: No  
Conversion: No

### 17 Floor 2 - Primary Bedroom

---



Dimensions: 11'11" x 23'1"  
Area: 229 sq. ft  
Counted as living area: Yes

Heated: Yes  
Finished: Yes  
Enclosed: Yes  
Contiguous: Yes  
Permitted: Yes  
Wet space: No  
Addition: No  
Conversion: No

**18** Floor 2 - Kitchen

---



**Dimensions:** 13'8" x 10'0"  
**Area:** 138 sq. ft  
**Counted as living area:** Yes

**Heated:** Yes  
**Finished:** Yes  
**Enclosed:** Yes  
**Contiguous:** Yes  
**Permitted:** Yes  
**Wet space:** No  
**Addition:** No  
**Conversion:** No