

Home data report

7920 Duke Pkwy, Spearfish, SD, US




Total Area: 1654 sq. ft

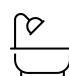
1st Floor: 1654 sq. ft

Excluded: Garage 808 sq. ft, Utility 25 sq. ft, Walls: 140 sq. ft

Property summary

 **1** Floors

 **3** Bedrooms

 **2** Bathrooms

 **1** Garages



Room dimensions

Floor 1

Total: 1654sqft Excluded: 833sqft

#		Dimensions	sqft	Counted as living area
1	Kitchen	9'5" x 13'5"	123 sq. ft	Yes
2	Garage	33'1" x 25'0"	808 sq. ft	No
3	Living Room	15'4" x 21'6"	360 sq. ft	Yes
4	Primary Bedroom	13'7" x 13'5"	182 sq. ft	Yes
5	Dining Area	12'1" x 9'6"	114 sq. ft	Yes
6	Foyer	10'9" x 8'7"	76 sq. ft	Yes
7	Bedroom	14'11" x 13'1"	195 sq. ft	Yes
8	Bedroom	12'11" x 12'6"	161 sq. ft	Yes
9	Bath	8'9" x 10'3"	76 sq. ft	Yes
10	Utility	6'1" x 4'1"	25 sq. ft	No
11	Pantry	5'10" x 5'1"	27 sq. ft	Yes

Home data report

7920 Duke Pkwy,Spearfish,SD,US

#		Dimensions	sqft	Counted as living area
12	Laundry	8'7" x 9'3"	79 sq. ft	Yes
13	Hall	5'9" x 4'7"	26 sq. ft	Yes
14	Bath	4'10" x 13'1"	56 sq. ft	Yes
15	W.I.C.	5'6" x 9'3"	51 sq. ft	Yes

1 Floor 1 - Kitchen



Dimensions: 9'5" x 13'5"
Area: 123 sq. ft
Counted as living area: Yes

Heated: Yes
Finished: Yes
Enclosed: Yes
Contiguous: Yes
Permitted: Yes
Wet space: No
Addition: No
Conversion: No

2 Floor 1 - Garage



Dimensions: 33'1" x 25'0"
Area: 808 sq. ft
Counted as living area: No

Heated: No
Finished: No
Enclosed: Yes
Contiguous: Yes
Permitted: Yes
Wet space: No
Addition: No
Conversion: No

3 Floor 1 - Living Room



Dimensions: 15'4" x 21'6"
Area: 360 sq. ft
Counted as living area: Yes

Heated: Yes
Finished: Yes
Enclosed: Yes
Contiguous: Yes
Permitted: Yes
Wet space: No
Addition: No
Conversion: No

4 Floor 1 - Primary Bedroom



Dimensions: 13'7" x 13'5"
Area: 182 sq. ft
Counted as living area: Yes

Heated: Yes
Finished: Yes
Enclosed: Yes
Contiguous: Yes
Permitted: Yes
Wet space: No
Addition: No
Conversion: No

5 Floor 1 - Dining Area



Dimensions: 12'1" x 9'6"
Area: 114 sq. ft
Counted as living area: Yes

Heated: Yes
Finished: Yes
Enclosed: Yes
Contiguous: Yes
Permitted: Yes
Wet space: No
Addition: No
Conversion: No

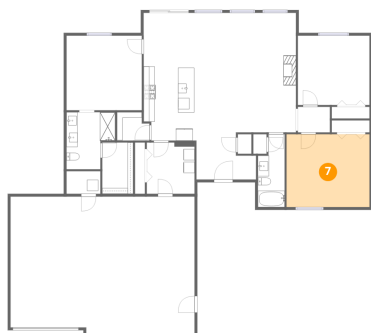
6 Floor 1 - Foyer



Dimensions: 10'9" x 8'7"
Area: 76 sq. ft
Counted as living area: Yes

Heated: Yes
Finished: Yes
Enclosed: Yes
Contiguous: Yes
Permitted: Yes
Wet space: No
Addition: No
Conversion: No

7 Floor 1 - Bedroom



Dimensions: 14'11" x 13'1"
Area: 195 sq. ft
Counted as living area: Yes

Heated: Yes
Finished: Yes
Enclosed: Yes
Contiguous: Yes
Permitted: Yes
Wet space: No
Addition: No
Conversion: No

8 Floor 1 - Bedroom



Dimensions: 12'11" x 12'6"
Area: 161 sq. ft
Counted as living area: Yes

Heated: Yes
Finished: Yes
Enclosed: Yes
Contiguous: Yes
Permitted: Yes
Wet space: No
Addition: No
Conversion: No

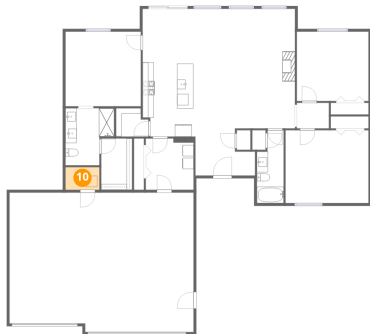
9 Floor 1 - Bath



Dimensions: 8'9" x 10'3"
Area: 76 sq. ft
Counted as living area: Yes

Heated: Yes
Finished: Yes
Enclosed: Yes
Contiguous: Yes
Permitted: Yes
Wet space: Yes
Addition: No
Conversion: No

10 Floor 1 - Utility



Dimensions: 6'1" x 4'1"
Area: 25 sq. ft
Counted as living area: No

Heated: Yes
Finished: No
Enclosed: Yes
Contiguous: Yes
Permitted: Yes
Wet space: No
Addition: No
Conversion: No

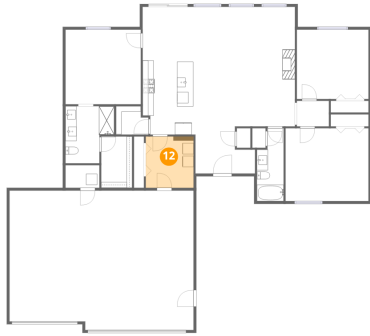
11 Floor 1 - Pantry



Dimensions: 5'10" x 5'1"
Area: 27 sq. ft
Counted as living area: Yes

Heated: Yes
Finished: Yes
Enclosed: Yes
Contiguous: Yes
Permitted: Yes
Wet space: No
Addition: No
Conversion: No

12 Floor 1 - Laundry



Dimensions: 8'7" x 9'3"
Area: 79 sq. ft
Counted as living area: Yes

Heated: Yes
Finished: Yes
Enclosed: Yes
Contiguous: Yes
Permitted: Yes
Wet space: No
Addition: No
Conversion: No

13 Floor 1 - Hall



Dimensions: 5'9" x 4'7"
Area: 26 sq. ft
Counted as living area: Yes

Heated: Yes
Finished: Yes
Enclosed: Yes
Contiguous: Yes
Permitted: Yes
Wet space: No
Addition: No
Conversion: No

14 Floor 1 - Bath



Dimensions: 4'10" x 13'1"
Area: 56 sq. ft
Counted as living area: Yes

Heated: Yes
Finished: Yes
Enclosed: Yes
Contiguous: Yes
Permitted: Yes
Wet space: Yes
Addition: No
Conversion: No

15 Floor 1 - W.I.C.



Dimensions: 5'6" x 9'3"
Area: 51 sq. ft
Counted as living area: Yes

Heated: Yes
Finished: Yes
Enclosed: Yes
Contiguous: Yes
Permitted: Yes
Wet space: No
Addition: No
Conversion: No