

Property Summary



13858 N Boulder Park Ln,Spokane,WA,US



Room Dimensions

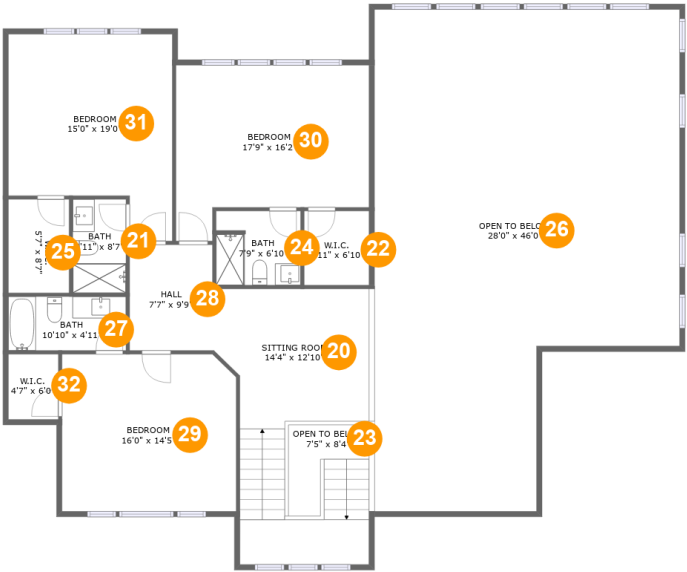
Floor 1 Total sqft: 6264 Living area: 4542

#	Room name	Dimensions	Area (sqft)	Counted as Living Area
1	Primary Bath	25'8" x 13'0"	242 sq. ft	Yes
2	Dining Area	18'7" x 26'3"	488 sq. ft	Yes
3	Hall	5'4" x 26'1"	140 sq. ft	Yes
4	Garage	32'8" x 48'11"	1435 sq. ft	No
5	Hall	13'0" x 6'2"	80 sq. ft	Yes
6	Foyer	15'1" x 15'0"	226 sq. ft	No
7	Office	12'8" x 12'1"	145 sq. ft	Yes
8	W.i.c.	5'1" x 8'9"	44 sq. ft	Yes
9	Room	10'3" x 8'1"	59 sq. ft	Yes
10	Wc	6'11" x 3'3"	23 sq. ft	Yes
11	Primary Bedroom	34'7" x 25'11"	647 sq. ft	Yes

13858 N Boulder Park Ln,Spokane,WA,US

#	Room name	Dimensions	Area (sqft)	Counted as Living Area
12	Hall	39'4" x 19'7"	432 sq. ft	Yes
13	Family Room	21'2" x 15'6"	328 sq. ft	Yes
14	Wc	5'7" x 8'1"	45 sq. ft	Yes
15	Wc	6'8" x 3'1"	20 sq. ft	Yes
16	W.i.c.	8'6" x 12'1"	98 sq. ft	Yes
17	Living Room	28'1" x 31'1"	870 sq. ft	Yes
18	Laundry	10'2" x 12'1"	111 sq. ft	Yes
19	Kitchen	15'1" x 29'2"	411 sq. ft	Yes

13858 N Boulder Park Ln,Spokane,WA,US



Room Dimensions

Floor 2

Total sqft: 2643

Living area: 1405

#	Room name	Dimensions	Area (sqft)	Counted as Living Area
20	Sitting Room	14'4" x 12'10"	279 sq. ft	Yes
21	Bath	4'11" x 8'7"	42 sq. ft	Yes
22	W.i.c.	5'11" x 6'10"	41 sq. ft	No
23	Open To Below	7'5" x 8'4"	49 sq. ft	No
24	Bath	7'9" x 6'10"	52 sq. ft	Yes
25	W.i.c.	5'7" x 8'7"	48 sq. ft	Yes
26	Open To Below	28'0" x 46'0"	1091 sq. ft	No
27	Bath	10'10" x 4'11"	54 sq. ft	Yes
28	Hall	7'7" x 9'9"	74 sq. ft	Yes
29	Bedroom	16'0" x 14'5"	228 sq. ft	Yes
30	Bedroom	17'9" x 16'2"	242 sq. ft	Yes

13858 N Boulder Park Ln,Spokane,WA,US

#	Room name	Dimensions	Area (sqft)	Counted as Living Area
31	Bedroom	15'0" x 19'0"	240 sq. ft	Yes
32	W.i.c.	4'7" x 6'0"	27 sq. ft	Yes

13858 N Boulder Park Ln,Spokane,WA,US

1 Floor 1 - Primary Bath



Dimensions: 25'8" x 13'0"
Area: 242 sq. ft
Counted as Living Area:
Yes

Heated: Yes
Finished: Yes
Enclosed: Yes
Contiguous:
Yes
Permitted: Yes
Wet Space: Yes
Addition: No
Conversion: No

2 Floor 1 - Dining Area



Dimensions: 18'7" x 26'3"
Area: 488 sq. ft
Counted as Living Area:
Yes

Heated: Yes
Finished: Yes
Enclosed: Yes
Contiguous:
Yes
Permitted: Yes
Wet Space: No
Addition: No
Conversion: No

13858 N Boulder Park Ln,Spokane,WA,US**3 Floor 1 - Hall**

Dimensions: 5'4" x 26'1"
Area: 140 sq. ft
Counted as Living Area:
Yes

Heated: Yes
Finished: Yes
Enclosed: Yes
Contiguous:
Yes
Permitted: Yes
Wet Space: No
Addition: No
Conversion: No

4 Floor 1 - Garage

Dimensions: 32'8" x 48'11"
Area: 1435 sq. ft
Counted as Living Area: No

Heated: No
Finished: No
Enclosed: Yes
Contiguous: Yes
Permitted: Yes
Wet Space: No
Addition: No
Conversion: No

5 Floor 1 - Hall

Dimensions: 13'0" x 6'2"
Area: 80 sq. ft
Counted as Living Area:
Yes

Heated: Yes
Finished: Yes
Enclosed: Yes
Contiguous:
Yes
Permitted: Yes
Wet Space: No
Addition: No
Conversion: No

13858 N Boulder Park Ln,Spokane,WA,US**6 Floor 1 - Foyer**

Dimensions: 15'1" x 15'0"
Area: 226 sq. ft
Counted as Living Area: No

Heated: Yes
Finished: Yes
Enclosed: Yes
Contiguous: Yes
Permitted: Yes
Wet Space: No
Addition: No
Conversion: No

7 Floor 1 - Office

Dimensions: 12'8" x 12'1"
Area: 145 sq. ft
Counted as Living Area: Yes

Heated: Yes
Finished: Yes
Enclosed: Yes
Contiguous: Yes
Permitted: Yes
Wet Space: No
Addition: No
Conversion: No

8 Floor 1 - W.i.c.

Dimensions: 5'1" x 8'9"
Area: 44 sq. ft
Counted as Living Area: Yes

Heated: Yes
Finished: Yes
Enclosed: Yes
Contiguous: Yes
Permitted: Yes
Wet Space: No
Addition: No
Conversion: No

13858 N Boulder Park Ln,Spokane,WA,US**9 Floor 1 - Room**

Dimensions: 10'3" x 8'1"
Area: 59 sq. ft
Counted as Living Area:
Yes

Heated: Yes
Finished: Yes
Enclosed: Yes
Contiguous:
Yes
Permitted: Yes
Wet Space: No
Addition: No
Conversion: No

10 Floor 1 - Wc

Dimensions: 6'11" x 3'3"
Area: 23 sq. ft
Counted as Living Area:
Yes

Heated: Yes
Finished: Yes
Enclosed: Yes
Contiguous:
Yes
Permitted: Yes
Wet Space: Yes
Addition: No
Conversion: No

11 Floor 1 - Primary Bedroom

Dimensions: 34'7" x 25'11"
Area: 647 sq. ft
Counted as Living Area:
Yes

Heated: Yes
Finished: Yes
Enclosed: Yes
Contiguous:
Yes
Permitted: Yes
Wet Space: No
Addition: No
Conversion: No

13858 N Boulder Park Ln,Spokane,WA,US**12 Floor 1 - Hall**

Dimensions: 39'4" x 19'7"
Area: 432 sq. ft
Counted as Living Area:
Yes

Heated: Yes
Finished: Yes
Enclosed: Yes
Contiguous:
Yes
Permitted: Yes
Wet Space: No
Addition: No
Conversion: No

13 Floor 1 - Family Room

Dimensions: 21'2" x 15'6"
Area: 328 sq. ft
Counted as Living Area:
Yes

Heated: Yes
Finished: Yes
Enclosed: Yes
Contiguous:
Yes
Permitted: Yes
Wet Space: No
Addition: No
Conversion: No

14 Floor 1 - Wc

Dimensions: 5'7" x 8'1"
Area: 45 sq. ft
Counted as Living Area:
Yes

Heated: Yes
Finished: Yes
Enclosed: Yes
Contiguous:
Yes
Permitted: Yes
Wet Space: Yes
Addition: No
Conversion: No

13858 N Boulder Park Ln,Spokane,WA,US**15 Floor 1 - Wc**

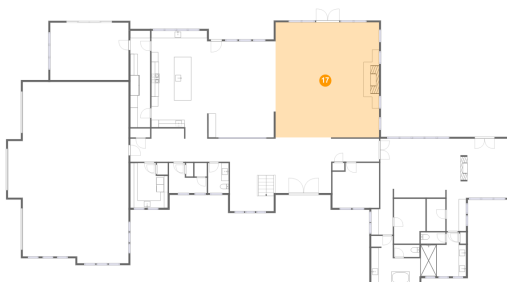
Dimensions: 6'8" x 3'1"
Area: 20 sq. ft
Counted as Living Area:
Yes

Heated: Yes
Finished: Yes
Enclosed: Yes
Contiguous:
Yes
Permitted: Yes
Wet Space: Yes
Addition: No
Conversion: No

16 Floor 1 - W.i.c.

Dimensions: 8'6" x 12'1"
Area: 98 sq. ft
Counted as Living Area:
Yes

Heated: Yes
Finished: Yes
Enclosed: Yes
Contiguous:
Yes
Permitted: Yes
Wet Space: No
Addition: No
Conversion: No

17 Floor 1 - Living Room

Dimensions: 28'1" x 31'1"
Area: 870 sq. ft
Counted as Living Area:
Yes

Heated: Yes
Finished: Yes
Enclosed: Yes
Contiguous:
Yes
Permitted: Yes
Wet Space: No
Addition: No
Conversion: No

13858 N Boulder Park Ln,Spokane,WA,US**18 Floor 1 - Laundry**

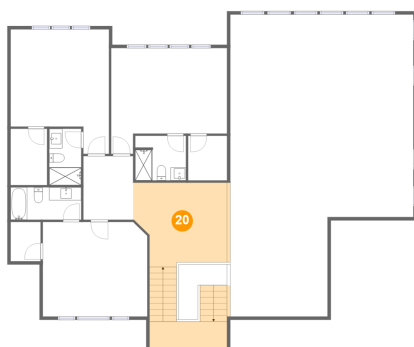
Dimensions: 10'2" x 12'1"
Area: 111 sq. ft
Counted as Living Area:
Yes

Heated: Yes
Finished: Yes
Enclosed: Yes
Contiguous:
Yes
Permitted: Yes
Wet Space: No
Addition: No
Conversion: No

19 Floor 1 - Kitchen

Dimensions: 15'1" x 29'2"
Area: 411 sq. ft
Counted as Living Area:
Yes

Heated: Yes
Finished: Yes
Enclosed: Yes
Contiguous:
Yes
Permitted: Yes
Wet Space: No
Addition: No
Conversion: No

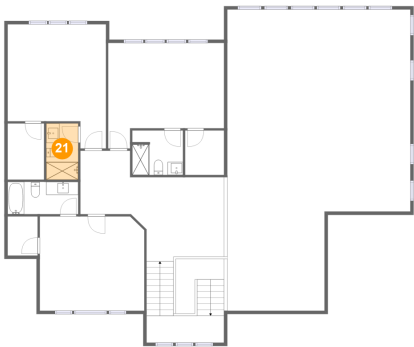
20 Floor 2 - Sitting Room

Dimensions: 14'4" x 12'10"
Area: 279 sq. ft
Counted as Living Area:
Yes

Heated: Yes
Finished: Yes
Enclosed: Yes
Contiguous:
Yes
Permitted: Yes
Wet Space: No
Addition: No
Conversion: No

13858 N Boulder Park Ln,Spokane,WA,US

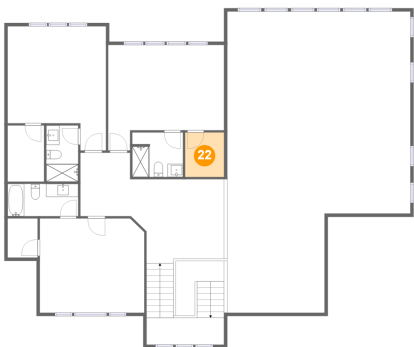
21 Floor 2 - Bath



Dimensions: 4'11" x 8'7"
Area: 42 sq. ft
Counted as Living Area:
Yes

Heated: Yes
Finished: Yes
Enclosed: Yes
Contiguous:
Yes
Permitted: Yes
Wet Space: Yes
Addition: No
Conversion: No

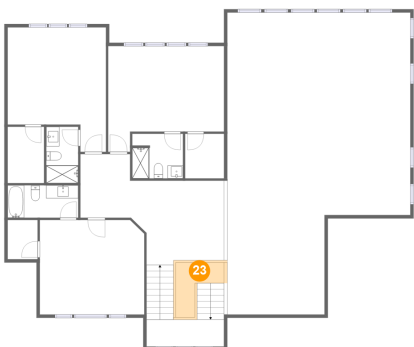
22 Floor 2 - W.i.c.



Dimensions: 5'11" x 6'10"
Area: 41 sq. ft
Counted as Living Area: No

Heated: Yes
Finished: Yes
Enclosed: Yes
Contiguous: Yes
Permitted: Yes
Wet Space: No
Addition: No
Conversion: No

23 Floor 2 - Open To Below



Dimensions: 7'5" x 8'4"
Area: 49 sq. ft
Counted as Living Area: No

Heated: No
Finished: No
Enclosed: No
Contiguous: Yes
Permitted: No
Wet Space: No
Addition: No
Conversion: No

13858 N Boulder Park Ln,Spokane,WA,US**24 Floor 2 - Bath**

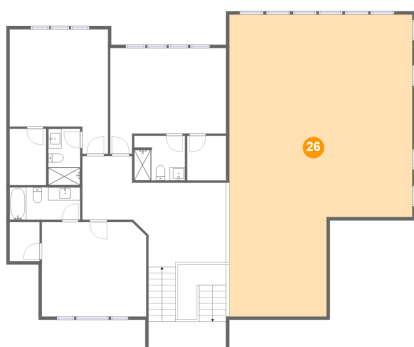
Dimensions: 7'9" x 6'10"
Area: 52 sq. ft
Counted as Living Area:
Yes

Heated: Yes
Finished: Yes
Enclosed: Yes
Contiguous:
Yes
Permitted: Yes
Wet Space: Yes
Addition: No
Conversion: No

25 Floor 2 - W.i.c.

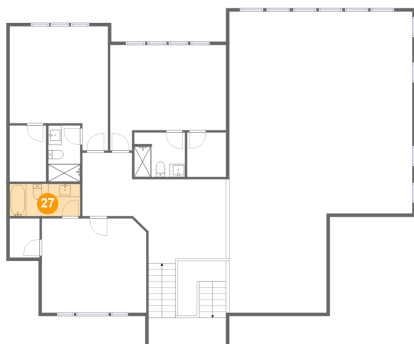
Dimensions: 5'7" x 8'7"
Area: 48 sq. ft
Counted as Living Area:
Yes

Heated: Yes
Finished: Yes
Enclosed: Yes
Contiguous:
Yes
Permitted: Yes
Wet Space: No
Addition: No
Conversion: No

26 Floor 2 - Open To Below

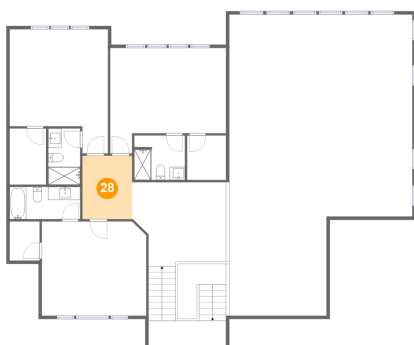
Dimensions: 28'0" x 46'0"
Area: 1091 sq. ft
Counted as Living Area: No

Heated: No
Finished: No
Enclosed: No
Contiguous: Yes
Permitted: No
Wet Space: No
Addition: No
Conversion: No

13858 N Boulder Park Ln,Spokane,WA,US**27 Floor 2 - Bath**

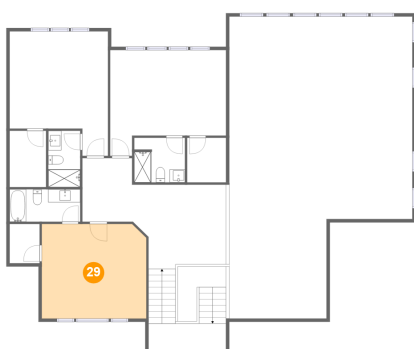
Dimensions: 10'10" x 4'11"
Area: 54 sq. ft
Counted as Living Area:
Yes

Heated: Yes
Finished: Yes
Enclosed: Yes
Contiguous:
Yes
Permitted: Yes
Wet Space: Yes
Addition: No
Conversion: No

28 Floor 2 - Hall

Dimensions: 7'7" x 9'9"
Area: 74 sq. ft
Counted as Living Area:
Yes

Heated: Yes
Finished: Yes
Enclosed: Yes
Contiguous:
Yes
Permitted: Yes
Wet Space: No
Addition: No
Conversion: No

29 Floor 2 - Bedroom

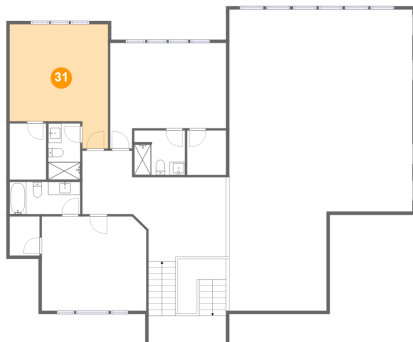
Dimensions: 16'0" x 14'5"
Area: 228 sq. ft
Counted as Living Area:
Yes

Heated: Yes
Finished: Yes
Enclosed: Yes
Contiguous:
Yes
Permitted: Yes
Wet Space: No
Addition: No
Conversion: No

13858 N Boulder Park Ln,Spokane,WA,US**30 Floor 2 - Bedroom**

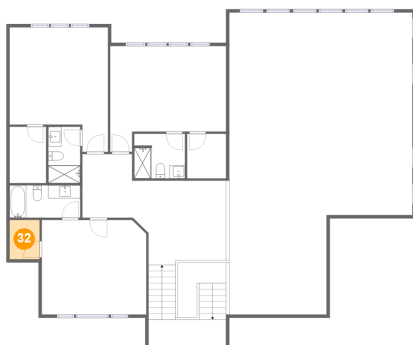
Dimensions: 17'9" x 16'2"
Area: 242 sq. ft
Counted as Living Area:
Yes

Heated: Yes
Finished: Yes
Enclosed: Yes
Contiguous:
Yes
Permitted: Yes
Wet Space: No
Addition: No
Conversion: No

31 Floor 2 - Bedroom

Dimensions: 15'0" x 19'0"
Area: 240 sq. ft
Counted as Living Area:
Yes

Heated: Yes
Finished: Yes
Enclosed: Yes
Contiguous:
Yes
Permitted: Yes
Wet Space: No
Addition: No
Conversion: No

32 Floor 2 - W.i.c.

Dimensions: 4'7" x 6'0"
Area: 27 sq. ft
Counted as Living Area:
Yes

Heated: Yes
Finished: Yes
Enclosed: Yes
Contiguous:
Yes
Permitted: Yes
Wet Space: No
Addition: No
Conversion: No