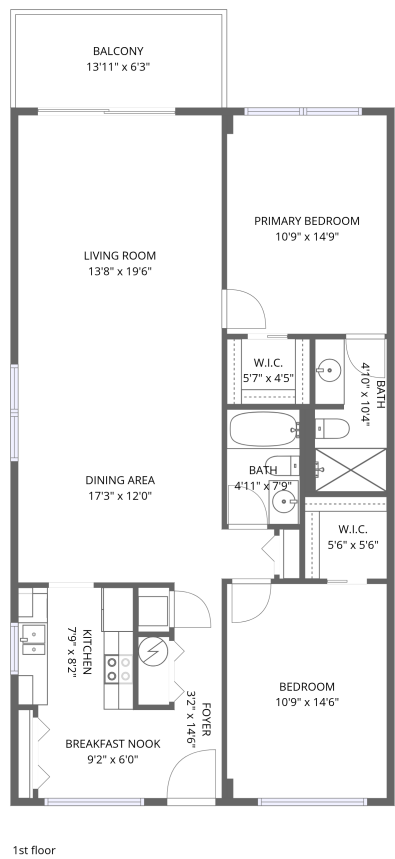


Home data report

2650 Pearce Drive, Seville, Clearwater, Pinellas County, Florida,
United States, 33764, 403



Total Area: 1145 sq. ft

1st Floor: 1145 sq. ft

Excluded: Balcony 88 sq. ft, Walls: 0 sq. ft

Property summary

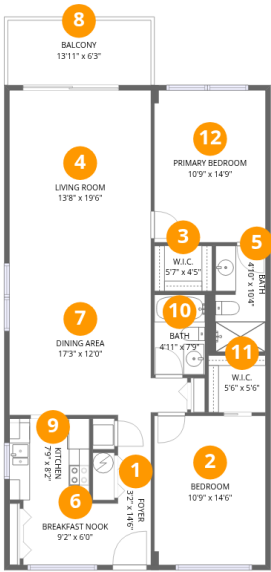
 **1** Floors

 **2** Bedrooms

 **2** Bathrooms

Home data report

2650 Pearce Drive, Seville, Clearwater, Pinellas County, Florida,
United States, 33764, 403



Room dimensions

Floor 1

Total:1145sqft Excluded: 88sqft

#		Dimensions	sqft	Counted as living area
1	Foyer	3'2" x 14'6"	47 sq. ft	Yes
2	Bedroom	10'9" x 14'6"	156 sq. ft	Yes
3	W.I.C.	5'7" x 4'5"	25 sq. ft	Yes
4	Living Room	13'8" x 19'6"	268 sq. ft	Yes
5	Bath	4'10" x 10'4"	53 sq. ft	Yes
6	Breakfast Nook	9'2" x 6'0"	55 sq. ft	Yes
7	Dining Area	17'3" x 12'0"	177 sq. ft	Yes
8	Balcony	13'11" x 6'3"	88 sq. ft	No
9	Kitchen	7'9" x 8'2"	63 sq. ft	Yes
10	Bath	4'11" x 7'9"	38 sq. ft	Yes
11	W.I.C.	5'6" x 5'6"	31 sq. ft	Yes

Home data report

2650 Pearce Drive, Seville, Clearwater, Pinellas County, Florida,
United States, 33764, 403

#		Dimensions	sqft	Counted as living area
12	Primary Bedroom	10'9" x 14'9"	159 sq. ft	Yes

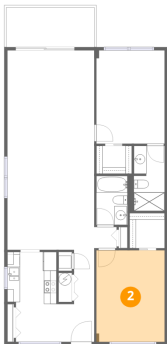
1 Floor 1 - Foyer



Dimensions: 3'2" x 14'6"
Area: 47 sq. ft
Counted as living area: Yes

Heated: Yes
Finished: Yes
Enclosed: Yes
Contiguous: Yes
Permitted: Yes
Wet space: No
Addition: No
Conversion: No

2 Floor 1 - Bedroom



Dimensions: 10'9" x 14'6"
Area: 156 sq. ft
Counted as living area: Yes

Heated: Yes
Finished: Yes
Enclosed: Yes
Contiguous: Yes
Permitted: Yes
Wet space: No
Addition: No
Conversion: No

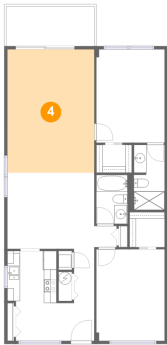
3 Floor 1 - W.I.C.



Dimensions: 5'7" x 4'5"
Area: 25 sq. ft
Counted as living area: Yes

Heated: Yes
Finished: Yes
Enclosed: Yes
Contiguous: Yes
Permitted: Yes
Wet space: No
Addition: No
Conversion: No

4 Floor 1 - Living Room



Dimensions: 13'8" x 19'6"
Area: 268 sq. ft
Counted as living area: Yes

Heated: Yes
Finished: Yes
Enclosed: Yes
Contiguous: Yes
Permitted: Yes
Wet space: No
Addition: No
Conversion: No

5 Floor 1 - Bath



Dimensions: 4'10" x 10'4"
Area: 53 sq. ft
Counted as living area: Yes

Heated: Yes
Finished: Yes
Enclosed: Yes
Contiguous: Yes
Permitted: Yes
Wet space: Yes
Addition: No
Conversion: No

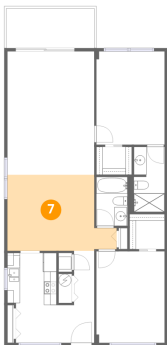
6 Floor 1 - Breakfast Nook



Dimensions: 9'2" x 6'0"
Area: 55 sq. ft
Counted as living area: Yes

Heated: Yes
Finished: Yes
Enclosed: Yes
Contiguous: Yes
Permitted: Yes
Wet space: No
Addition: No
Conversion: No

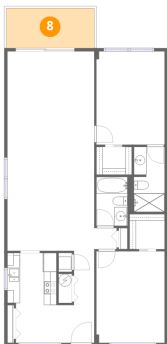
7 Floor 1 - Dining Area



Dimensions: 17'3" x 12'0"
Area: 177 sq. ft
Counted as living area: Yes

Heated: Yes
Finished: Yes
Enclosed: Yes
Contiguous: Yes
Permitted: Yes
Wet space: No
Addition: No
Conversion: No

8 Floor 1 - Balcony



Dimensions: 13'11" x 6'3"
Area: 88 sq. ft
Counted as living area: No

Heated: No
Finished: No
Enclosed: No
Contiguous: Yes
Permitted: Yes
Wet space: No
Addition: No
Conversion: No

9 Floor 1 - Kitchen



Dimensions: 7'9" x 8'2"
Area: 63 sq. ft
Counted as living area: Yes

Heated: Yes
Finished: Yes
Enclosed: Yes
Contiguous: Yes
Permitted: Yes
Wet space: No
Addition: No
Conversion: No

10 Floor 1 - Bath



Dimensions: 4'11" x 7'9"
Area: 38 sq. ft
Counted as living area: Yes

Heated: Yes
Finished: Yes
Enclosed: Yes
Contiguous: Yes
Permitted: Yes
Wet space: Yes
Addition: No
Conversion: No

11 Floor 1 - W.I.C.



Dimensions: 5'6" x 5'6"
Area: 31 sq. ft
Counted as living area: Yes

Heated: Yes
Finished: Yes
Enclosed: Yes
Contiguous: Yes
Permitted: Yes
Wet space: No
Addition: No
Conversion: No

2650 Pearce Drive, Seville, Clearwater, Pinellas County, Florida,
United States, 33764, 403

12 Floor 1 - Primary Bedroom



Dimensions: 10'9" x 14'9"
Area: 159 sq. ft
Counted as living area: Yes

Heated: Yes
Finished: Yes
Enclosed: Yes
Contiguous: Yes
Permitted: Yes
Wet space: No
Addition: No
Conversion: No