

Home data report

91 Equestrian Drive, Bridlewood, Kanata, Ontario, Canada, K2M 2X1



Total Area: 2203 sq. ft

Basement: 429 sq. ft, 1st Floor: 905 sq. ft, 2nd Floor: 869 sq. ft

Excluded: Storage 286 sq. ft, Utility 177 sq. ft, Garage 275 sq. ft, Fireplace 9 sq. ft, Walls: 222 sq. ft

Property summary

 **3** Floors

 **5** Bedrooms

 **2** Bathrooms

Home data report

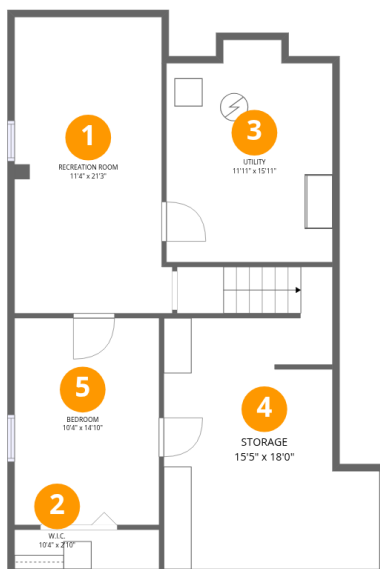
91 Equestrian Drive, Bridlewood, Kanata, Ontario, Canada, K2M 2X1

 **1**
Half baths

 **1**
Garages

Home data report

91 Equestrian Drive, Bridlewood, Kanata, Ontario, Canada, K2M 2X1



Room dimensions

Floor 1 Below grade

Total:429sqft

Excluded: 463sqft

#		Dimensions	sqft	Counted as living area
1	Recreation Room	11'4" x 21'3"	240 sq. ft	Yes
2	W.I.C.	10'4" x 2'10"	29 sq. ft	Yes
3	Utility	11'11" x 15'11"	190 sq. ft	No
4	Storage	15'5" x 18'0"	277 sq. ft	No
5	Bedroom	10'4" x 14'10"	154 sq. ft	Yes

Home data report

91 Equestrian Drive, Bridlewood, Kanata, Ontario, Canada, K2M 2X1



Room dimensions

Floor 2

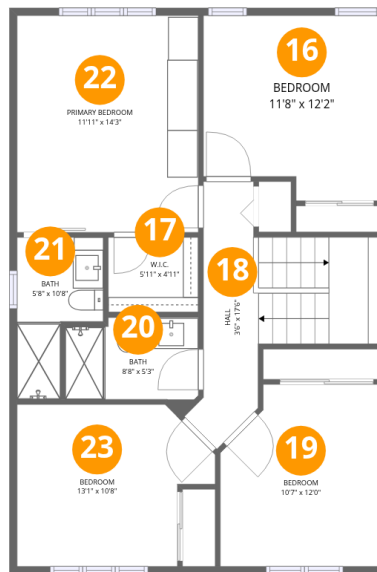
Total:905sqft

Excluded: 284sqft

#		Dimensions	sqft	Counted as living area
6	Foyer	5'3" x 10'2"	53 sq. ft	Yes
7	Bath	8'2" x 2'8"	22 sq. ft	Yes
8	Family Room	12'3" x 14'3"	174 sq. ft	Yes
9	Entry	12'3" x 4'0"	49 sq. ft	Yes
10	Kitchen	10'6" x 16'4"	172 sq. ft	Yes
11	Dining Area	10'7" x 8'10"	93 sq. ft	Yes
12	Laundry	9'7" x 7'0"	67 sq. ft	Yes
13	Living Room	10'7" x 13'9"	145 sq. ft	Yes
14	Garage	15'8" x 18'4"	287 sq. ft	No
15	Hall	3'11" x 10'8"	42 sq. ft	Yes

Home data report

91 Equestrian Drive, Bridlewood, Kanata, Ontario, Canada, K2M 2X1



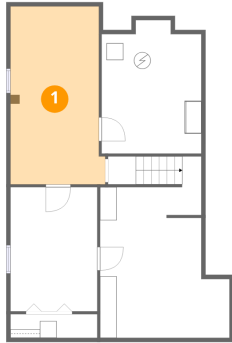
Room dimensions

Floor 3

Total:869sqft Excluded: 0sqft

#		Dimensions	sqft	Counted as living area
16	Bedroom	11'8" x 12'2"	142 sq. ft	Yes
17	W.I.C.	5'11" x 4'11"	29 sq. ft	Yes
18	Hall	3'6" x 17'6"	62 sq. ft	Yes
19	Bedroom	10'7" x 12'0"	127 sq. ft	Yes
20	Bath	8'8" x 5'3"	46 sq. ft	Yes
21	Bath	5'8" x 10'8"	60 sq. ft	Yes
22	Primary Bedroom	11'11" x 14'3"	170 sq. ft	Yes
23	Bedroom	13'1" x 10'8"	139 sq. ft	Yes

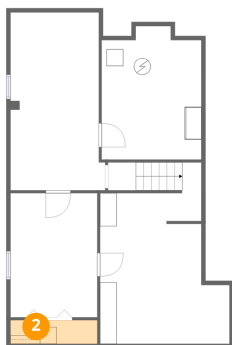
1 Floor 1 - Recreation Room



Dimensions: 11'4" x 21'3"
Area: 240 sq. ft
Counted as living area: Yes

Heated: Yes
Finished: Yes
Enclosed: Yes
Contiguous: Yes
Permitted: Yes
Wet space: No
Addition: No
Conversion: No

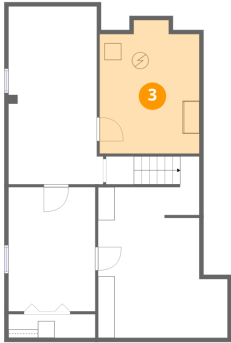
2 Floor 1 - W.I.C.



Dimensions: 10'4" x 2'10"
Area: 29 sq. ft
Counted as living area: Yes

Heated: Yes
Finished: Yes
Enclosed: Yes
Contiguous: Yes
Permitted: Yes
Wet space: No
Addition: No
Conversion: No

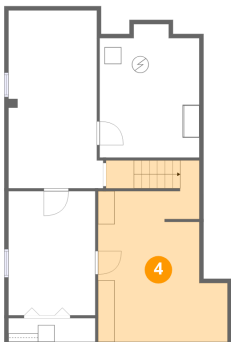
3 Floor 1 - Utility



Dimensions: 11'11" x 15'11"
Area: 190 sq. ft
Counted as living area: No

Heated: Yes
Finished: No
Enclosed: Yes
Contiguous: Yes
Permitted: Yes
Wet space: No
Addition: No
Conversion: No

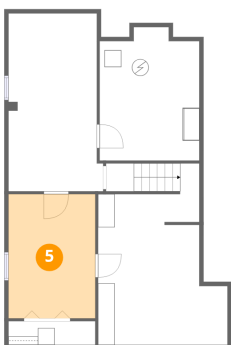
4 Floor 1 - Storage



Dimensions: 15'5" x 18'0"
Area: 277 sq. ft
Counted as living area: No

Heated: No
Finished: No
Enclosed: No
Contiguous: Yes
Permitted: Yes
Wet space: No
Addition: No
Conversion: No

5 Floor 1 - Bedroom



Dimensions: 10'4" x 14'10"
Area: 154 sq. ft
Counted as living area: Yes

Heated: Yes
Finished: Yes
Enclosed: Yes
Contiguous: Yes
Permitted: Yes
Wet space: No
Addition: No
Conversion: No

6 Floor 2 - Foyer



Dimensions: 5'3" x 10'2"
Area: 53 sq. ft
Counted as living area: Yes

Heated: Yes
Finished: Yes
Enclosed: Yes
Contiguous: Yes
Permitted: Yes
Wet space: No
Addition: No
Conversion: No

7 Floor 2 - Bath



Dimensions: 8'2" x 2'8"
Area: 22 sq. ft
Counted as living area: Yes

Heated: Yes
Finished: Yes
Enclosed: Yes
Contiguous: Yes
Permitted: Yes
Wet space: Yes
Addition: No
Conversion: No

8 Floor 2 - Family Room



Dimensions: 12'3" x 14'3"
Area: 174 sq. ft
Counted as living area: Yes

Heated: Yes
Finished: Yes
Enclosed: Yes
Contiguous: Yes
Permitted: Yes
Wet space: No
Addition: No
Conversion: No

9 Floor 2 - Entry



Dimensions: 12'3" x 4'0"
Area: 49 sq. ft
Counted as living area: Yes

Heated: Yes
Finished: Yes
Enclosed: Yes
Contiguous: Yes
Permitted: Yes
Wet space: No
Addition: No
Conversion: No

10 Floor 2 - Kitchen



Dimensions: 10'6" x 16'4"
Area: 172 sq. ft
Counted as living area: Yes

Heated: Yes
Finished: Yes
Enclosed: Yes
Contiguous: Yes
Permitted: Yes
Wet space: No
Addition: No
Conversion: No

11 Floor 2 - Dining Area



Dimensions: 10'7" x 8'10"
Area: 93 sq. ft
Counted as living area: Yes

Heated: Yes
Finished: Yes
Enclosed: Yes
Contiguous: Yes
Permitted: Yes
Wet space: No
Addition: No
Conversion: No

12 Floor 2 - Laundry



Dimensions: 9'7" x 7'0"
Area: 67 sq. ft
Counted as living area: Yes

Heated: Yes
Finished: Yes
Enclosed: Yes
Contiguous: Yes
Permitted: Yes
Wet space: No
Addition: No
Conversion: No

13 Floor 2 - Living Room



Dimensions: 10'7" x 13'9"
Area: 145 sq. ft
Counted as living area: Yes

Heated: Yes
Finished: Yes
Enclosed: Yes
Contiguous: Yes
Permitted: Yes
Wet space: No
Addition: No
Conversion: No

14 Floor 2 - Garage



Dimensions: 15'8" x 18'4"
Area: 287 sq. ft
Counted as living area: No

Heated: No
Finished: No
Enclosed: Yes
Contiguous: Yes
Permitted: Yes
Wet space: No
Addition: No
Conversion: No

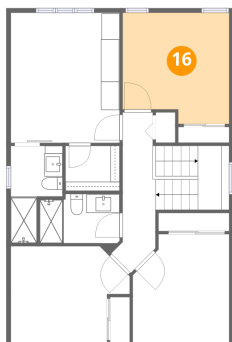
15 Floor 2 - Hall



Dimensions: 3'11" x 10'8"
Area: 42 sq. ft
Counted as living area: Yes

Heated: Yes
Finished: Yes
Enclosed: Yes
Contiguous: Yes
Permitted: Yes
Wet space: No
Addition: No
Conversion: No

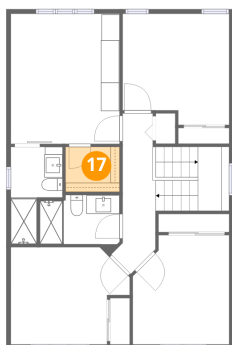
16 Floor 3 - Bedroom



Dimensions: 11'8" x 12'2"
Area: 142 sq. ft
Counted as living area: Yes

Heated: Yes
Finished: Yes
Enclosed: Yes
Contiguous: Yes
Permitted: Yes
Wet space: No
Addition: No
Conversion: No

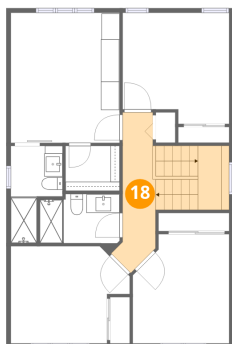
17 Floor 3 - W.I.C.



Dimensions: 5'11" x 4'11"
Area: 29 sq. ft
Counted as living area: Yes

Heated: Yes
Finished: Yes
Enclosed: Yes
Contiguous: Yes
Permitted: Yes
Wet space: No
Addition: No
Conversion: No

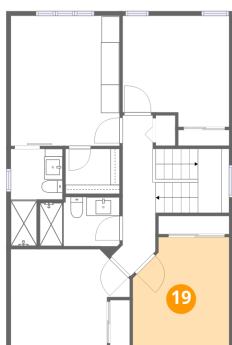
18 Floor 3 - Hall



Dimensions: 3'6" x 17'6"
Area: 62 sq. ft
Counted as living area: Yes

Heated: Yes
Finished: Yes
Enclosed: Yes
Contiguous: Yes
Permitted: Yes
Wet space: No
Addition: No
Conversion: No

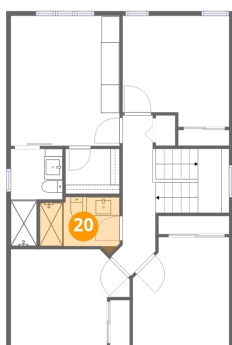
19 Floor 3 - Bedroom



Dimensions: 10'7" x 12'0"
Area: 127 sq. ft
Counted as living area: Yes

Heated: Yes
Finished: Yes
Enclosed: Yes
Contiguous: Yes
Permitted: Yes
Wet space: No
Addition: No
Conversion: No

20 Floor 3 - Bath

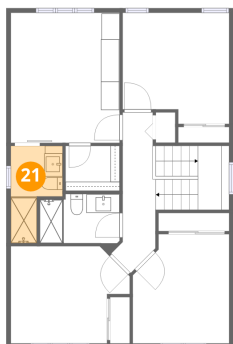


Dimensions: 8'8" x 5'3"
Area: 46 sq. ft
Counted as living area: Yes

Heated: Yes
Finished: Yes
Enclosed: Yes
Contiguous: Yes
Permitted: Yes
Wet space: Yes
Addition: No
Conversion: No

91 Equestrian Drive, Bridlewood, Kanata, Ontario, Canada, K2M 2X1

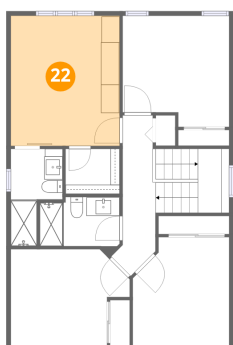
21 Floor 3 - Bath



Dimensions: 5'8" x 10'8"
Area: 60 sq. ft
Counted as living area: Yes

Heated: Yes
Finished: Yes
Enclosed: Yes
Contiguous: Yes
Permitted: Yes
Wet space: Yes
Addition: No
Conversion: No

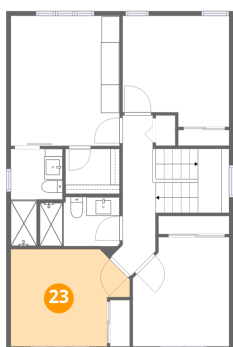
22 Floor 3 - Primary Bedroom



Dimensions: 11'11" x 14'3"
Area: 170 sq. ft
Counted as living area: Yes

Heated: Yes
Finished: Yes
Enclosed: Yes
Contiguous: Yes
Permitted: Yes
Wet space: No
Addition: No
Conversion: No

23 Floor 3 - Bedroom



Dimensions: 13'1" x 10'8"
Area: 139 sq. ft
Counted as living area: Yes

Heated: Yes
Finished: Yes
Enclosed: Yes
Contiguous: Yes
Permitted: Yes
Wet space: No
Addition: No
Conversion: No