

# Home data report

## 9448 Westland Crossing Way, Knoxville, TN, US

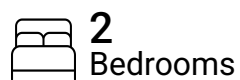


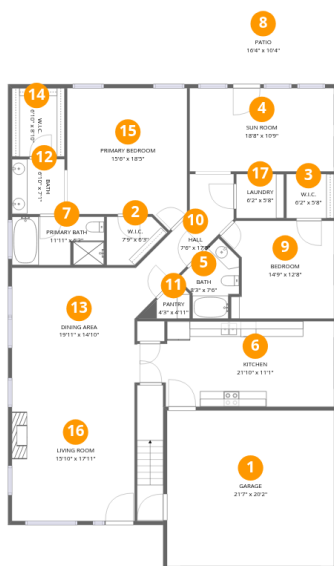
**Total Area: 2007 sq. ft**

1st Floor: 2007 sq. ft, 2nd Floor: 0 sq. ft

Excluded: Garage 435 sq. ft, Patio 170 sq. ft, Attic 568 sq. ft, Walls: 176 sq. ft

## Property summary





## Room dimensions

Floor 1

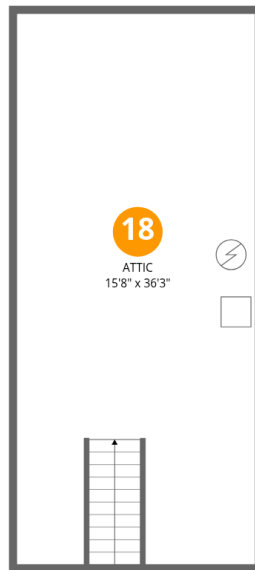
Total:2007sqft Excluded: 605sqft

#		Dimensions	sqft	Counted as living area
1	Garage	21'7" x 20'2"	435 sq. ft	No
2	W.I.C.	7'9" x 6'3"	49 sq. ft	Yes
3	W.I.C.	6'2" x 5'8"	35 sq. ft	Yes
4	Sun Room	18'8" x 10'9"	202 sq. ft	Yes
5	Bath	8'3" x 7'6"	62 sq. ft	Yes
6	Kitchen	21'10" x 11'1"	241 sq. ft	Yes
7	Primary Bath	11'11" x 6'3"	75 sq. ft	Yes
8	Patio	16'4" x 10'4"	169 sq. ft	No
9	Bedroom	14'9" x 12'8"	186 sq. ft	Yes
10	Hall	7'6" x 17'5"	131 sq. ft	Yes
11	Pantry	4'3" x 4'11"	21 sq. ft	Yes

Home data report

9448 Westland Crossing Way, Knoxville, TN, US

#		Dimensions	sqft	Counted as living area
12	Bath	6'10" x 7'1"	49 sq. ft	Yes
13	Dining Area	19'11" x 14'10"	295 sq. ft	Yes
14	W.I.C.	6'10" x 8'10"	60 sq. ft	Yes
15	Primary Bedroom	15'6" x 18'5"	286 sq. ft	Yes
16	Living Room	15'10" x 17'11"	284 sq. ft	Yes
17	Laundry	6'2" x 5'8"	35 sq. ft	Yes



## Room dimensions

Floor 2

Total: 0sqft

Excluded: 568sqft

#		Dimensions	sqft	Counted as living area
18	Attic	15'8" x 36'3"	568 sq. ft	No

## 1 Floor 1 - Garage



Dimensions: 21'7" x 20'2"  
Area: 435 sq. ft  
Counted as living area: No

Heated: No  
Finished: No  
Enclosed: Yes  
Contiguous: Yes  
Permitted: Yes  
Wet space: No  
Addition: No  
Conversion: No

## 2 Floor 1 - W.I.C.



Dimensions: 7'9" x 6'3"  
Area: 49 sq. ft  
Counted as living area: Yes

Heated: Yes  
Finished: Yes  
Enclosed: Yes  
Contiguous: Yes  
Permitted: Yes  
Wet space: No  
Addition: No  
Conversion: No

**3** Floor 1 - W.I.C.



Dimensions: 6'2" x 5'8"  
Area: 35 sq. ft  
Counted as living area: Yes

Heated: Yes  
Finished: Yes  
Enclosed: Yes  
Contiguous: Yes  
Permitted: Yes  
Wet space: No  
Addition: No  
Conversion: No

**4** Floor 1 - Sun Room



Dimensions: 18'8" x 10'9"  
Area: 202 sq. ft  
Counted as living area: Yes

Heated: Yes  
Finished: Yes  
Enclosed: Yes  
Contiguous: Yes  
Permitted: Yes  
Wet space: No  
Addition: No  
Conversion: No

**5** Floor 1 - Bath



Dimensions: 8'3" x 7'6"  
Area: 62 sq. ft  
Counted as living area: Yes

Heated: Yes  
Finished: Yes  
Enclosed: Yes  
Contiguous: Yes  
Permitted: Yes  
Wet space: Yes  
Addition: No  
Conversion: No

## 6 Floor 1 - Kitchen



Dimensions: 21'10" x 11'1"  
Area: 241 sq. ft  
Counted as living area: Yes

Heated: Yes  
Finished: Yes  
Enclosed: Yes  
Contiguous: Yes  
Permitted: Yes  
Wet space: No  
Addition: No  
Conversion: No

## 7 Floor 1 - Primary Bath



Dimensions: 11'11" x 6'3"  
Area: 75 sq. ft  
Counted as living area: Yes

Heated: Yes  
Finished: Yes  
Enclosed: Yes  
Contiguous: Yes  
Permitted: Yes  
Wet space: Yes  
Addition: No  
Conversion: No

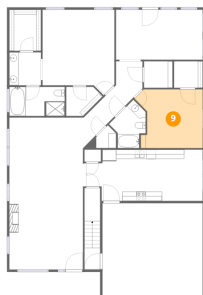
## 8 Floor 1 - Patio



Dimensions: 16'4" x 10'4"  
Area: 169 sq. ft  
Counted as living area: No

Heated: No  
Finished: No  
Enclosed: No  
Contiguous: Yes  
Permitted: Yes  
Wet space: No  
Addition: No  
Conversion: No

### 9 Floor 1 - Bedroom



Dimensions: 14'9" x 12'8"  
Area: 186 sq. ft  
Counted as living area: Yes

Heated: Yes  
Finished: Yes  
Enclosed: Yes  
Contiguous: Yes  
Permitted: Yes  
Wet space: No  
Addition: No  
Conversion: No

### 10 Floor 1 - Hall



Dimensions: 7'6" x 17'5"  
Area: 131 sq. ft  
Counted as living area: Yes

Heated: Yes  
Finished: Yes  
Enclosed: Yes  
Contiguous: Yes  
Permitted: Yes  
Wet space: No  
Addition: No  
Conversion: No

### 11 Floor 1 - Pantry



Dimensions: 4'3" x 4'11"  
Area: 21 sq. ft  
Counted as living area: Yes

Heated: Yes  
Finished: Yes  
Enclosed: Yes  
Contiguous: Yes  
Permitted: Yes  
Wet space: No  
Addition: No  
Conversion: No

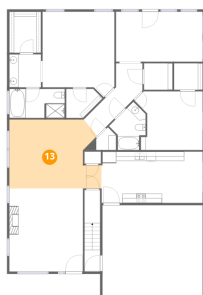
**12** Floor 1 - Bath



Dimensions: 6'10" x 7'1"  
Area: 49 sq. ft  
Counted as living area: Yes

Heated: Yes  
Finished: Yes  
Enclosed: Yes  
Contiguous: Yes  
Permitted: Yes  
Wet space: Yes  
Addition: No  
Conversion: No

**13** Floor 1 - Dining Area



Dimensions: 19'11" x 14'10"  
Area: 295 sq. ft  
Counted as living area: Yes

Heated: Yes  
Finished: Yes  
Enclosed: Yes  
Contiguous: Yes  
Permitted: Yes  
Wet space: No  
Addition: No  
Conversion: No

**14** Floor 1 - W.I.C.



Dimensions: 6'10" x 8'10"  
Area: 60 sq. ft  
Counted as living area: Yes

Heated: Yes  
Finished: Yes  
Enclosed: Yes  
Contiguous: Yes  
Permitted: Yes  
Wet space: No  
Addition: No  
Conversion: No

### 15 Floor 1 - Primary Bedroom



Dimensions: 15'6" x 18'5"  
Area: 286 sq. ft  
Counted as living area: Yes

Heated: Yes  
Finished: Yes  
Enclosed: Yes  
Contiguous: Yes  
Permitted: Yes  
Wet space: No  
Addition: No  
Conversion: No

### 16 Floor 1 - Living Room



Dimensions: 15'10" x 17'11"  
Area: 284 sq. ft  
Counted as living area: Yes

Heated: Yes  
Finished: Yes  
Enclosed: Yes  
Contiguous: Yes  
Permitted: Yes  
Wet space: No  
Addition: No  
Conversion: No

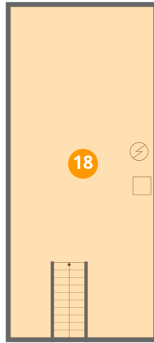
### 17 Floor 1 - Laundry



Dimensions: 6'2" x 5'8"  
Area: 35 sq. ft  
Counted as living area: Yes

Heated: Yes  
Finished: Yes  
Enclosed: Yes  
Contiguous: Yes  
Permitted: Yes  
Wet space: No  
Addition: No  
Conversion: No

**18** Floor 2 - Attic



Dimensions: 15'8" x 36'3"  
Area: 568 sq. ft  
Counted as living area: No

Heated: No  
Finished: No  
Enclosed: Yes  
Contiguous: Yes  
Permitted: Yes  
Wet space: No  
Addition: No  
Conversion: No