

Home data report

4446 Wildmint Square, Riverside South, Gloucester, Ontario, Canada, K1V 1N6



Total Area: 1467 sq. ft

Below Ground: 339 sq. ft, 1st Floor: 559 sq. ft, 2nd Floor: 569 sq. ft

Excluded: Basement 121 sq. ft, Utility 100 sq. ft, Stairwell 57 sq. ft, Open to below 140 sq. ft, Walls: 136 sq. ft

Property summary

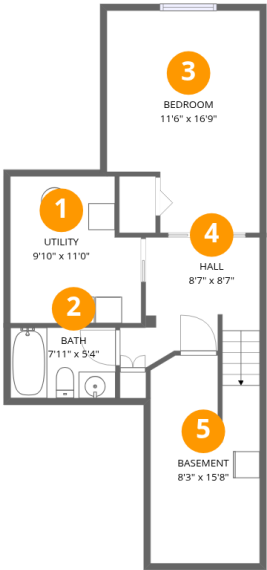
 **3** Floors

 **3** Bedrooms

 **2** Bathrooms

 **1** Half baths

4446 Wildmint Square, Riverside South, Gloucester, Ontario, Canada, K1V 1N6

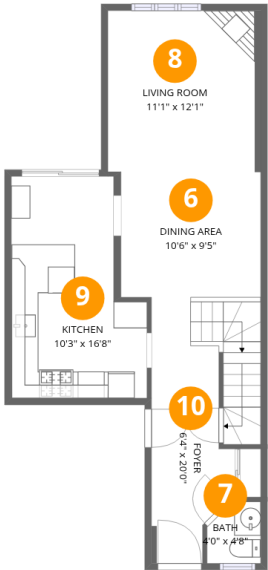


Room dimensions

Floor 1 Below grade Total:339sqft Excluded: 221sqft

#		Dimensions	sqft	Counted as living area
1	Utility	9'10" x 11'0"	100 sq. ft	No
2	Bath	7'11" x 5'4"	42 sq. ft	Yes
3	Bedroom	11'6" x 16'9"	174 sq. ft	Yes
4	Hall	8'7" x 8'7"	87 sq. ft	Yes
5	Basement	8'3" x 15'8"	119 sq. ft	No

4446 Wildmint Square, Riverside South, Gloucester, Ontario, Canada, K1V 1N6



Room dimensions

Floor 2 Total:559sqft Excluded: 0sqft

#		Dimensions	sqft	Counted as living area
6	Dining Area	10'6" x 9'5"	99 sq. ft	Yes
7	Bath	4'0" x 4'8"	17 sq. ft	Yes
8	Living Room	11'1" x 12'1"	140 sq. ft	Yes
9	Kitchen	10'3" x 16'8"	147 sq. ft	Yes
10	Foyer	6'4" x 20'0"	135 sq. ft	Yes

**4446 Wildmint Square, Riverside South, Gloucester, Ontario,
Canada, K1V 1N6**



Total:569sqft Excluded: 197sqft

Scan captured on Mon, 08 Dec 2025 17:39:19 GMT

4446 Wildmint Square, Riverside South, Gloucester, Ontario,
Canada, K1V 1N6

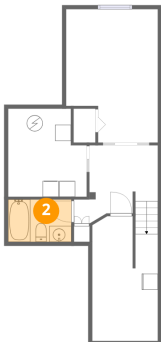
1 Floor 1 - Utility



Dimensions: 9'10" x 11'0"
Area: 100 sq. ft
Counted as living area: No

Heated: Yes
Finished: No
Enclosed: Yes
Contiguous: Yes
Permitted: Yes
Wet space: No
Addition: No
Conversion: No

2 Floor 1 - Bath



Dimensions: 7'11" x 5'4"
Area: 42 sq. ft
Counted as living area: Yes

Heated: Yes
Finished: Yes
Enclosed: Yes
Contiguous: Yes
Permitted: Yes
Wet space: Yes
Addition: No
Conversion: No

4446 Wildmint Square, Riverside South, Gloucester, Ontario,
Canada, K1V 1N6

3 Floor 1 - Bedroom



Dimensions: 11'6" x 16'9"
Area: 174 sq. ft
Counted as living area: Yes

Heated: Yes
Finished: Yes
Enclosed: Yes
Contiguous: Yes
Permitted: Yes
Wet space: No
Addition: No
Conversion: No

4 Floor 1 - Hall



Dimensions: 8'7" x 8'7"
Area: 87 sq. ft
Counted as living area: Yes

Heated: Yes
Finished: Yes
Enclosed: Yes
Contiguous: Yes
Permitted: Yes
Wet space: No
Addition: No
Conversion: No

5 Floor 1 - Basement



Dimensions: 8'3" x 15'8"
Area: 119 sq. ft
Counted as living area: No

Heated: Yes
Finished: No
Enclosed: Yes
Contiguous: Yes
Permitted: Yes
Wet space: No
Addition: No
Conversion: No

4446 Wildmint Square, Riverside South, Gloucester, Ontario,
Canada, K1V 1N6

6 Floor 2 - Dining Area



Dimensions: 10'6" x 9'5"
Area: 99 sq. ft
Counted as living area: Yes

Heated: Yes
Finished: Yes
Enclosed: Yes
Contiguous: Yes
Permitted: Yes
Wet space: No
Addition: No
Conversion: No

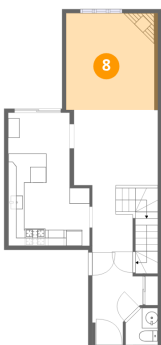
7 Floor 2 - Bath



Dimensions: 4'0" x 4'8"
Area: 17 sq. ft
Counted as living area: Yes

Heated: Yes
Finished: Yes
Enclosed: Yes
Contiguous: Yes
Permitted: Yes
Wet space: Yes
Addition: No
Conversion: No

8 Floor 2 - Living Room



Dimensions: 11'1" x 12'1"
Area: 140 sq. ft
Counted as living area: Yes

Heated: Yes
Finished: Yes
Enclosed: Yes
Contiguous: Yes
Permitted: Yes
Wet space: No
Addition: No
Conversion: No

4446 Wildmint Square, Riverside South, Gloucester, Ontario,
Canada, K1V 1N6

9 Floor 2 - Kitchen



Dimensions: 10'3" x 16'8"
Area: 147 sq. ft
Counted as living area: Yes

Heated: Yes
Finished: Yes
Enclosed: Yes
Contiguous: Yes
Permitted: Yes
Wet space: No
Addition: No
Conversion: No

10 Floor 2 - Foyer



Dimensions: 6'4" x 20'0"
Area: 135 sq. ft
Counted as living area: Yes

Heated: Yes
Finished: Yes
Enclosed: Yes
Contiguous: Yes
Permitted: Yes
Wet space: No
Addition: No
Conversion: No

11 Floor 3 - Stairwell

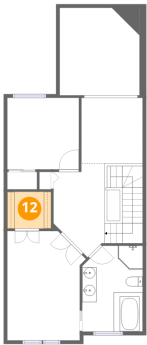


Dimensions: 4'11" x 3'0"
Area: 49 sq. ft
Counted as living area: No

Heated: No
Finished: No
Enclosed: No
Contiguous: Yes
Permitted: No
Wet space: No
Addition: No
Conversion: No

4446 Wildmint Square, Riverside South, Gloucester, Ontario,
Canada, K1V 1N6

12 Floor 3 - W.I.C.



Dimensions: 6'1" x 5'1"
Area: 31 sq. ft
Counted as living area: Yes

Heated: Yes
Finished: Yes
Enclosed: Yes
Contiguous: Yes
Permitted: Yes
Wet space: No
Addition: No
Conversion: No

13 Floor 3 - Loft



Dimensions: 8'6" x 9'1"
Area: 80 sq. ft
Counted as living area: Yes

Heated: Yes
Finished: Yes
Enclosed: Yes
Contiguous: Yes
Permitted: Yes
Wet space: No
Addition: No
Conversion: No

14 Floor 3 - Open To Below

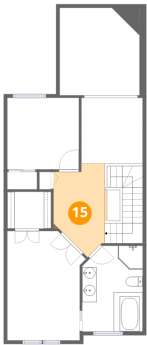


Dimensions: 1'9" x 4'3"
Area: 8 sq. ft
Counted as living area: Yes

Heated: No
Finished: No
Enclosed: No
Contiguous: Yes
Permitted: No
Wet space: No
Addition: No
Conversion: No

4446 Wildmint Square, Riverside South, Gloucester, Ontario,
Canada, K1V 1N6

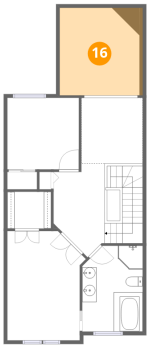
15 Floor 3 - Hall



Dimensions: 7'1" x 13'0"
Area: 76 sq. ft
Counted as living area: Yes

Heated: Yes
Finished: Yes
Enclosed: Yes
Contiguous: Yes
Permitted: Yes
Wet space: No
Addition: No
Conversion: No

16 Floor 3 - Open To Below



Dimensions: 11'1" x 12'1"
Area: 140 sq. ft
Counted as living area: No

Heated: No
Finished: No
Enclosed: No
Contiguous: Yes
Permitted: No
Wet space: No
Addition: No
Conversion: No

17 Floor 3 - Bath

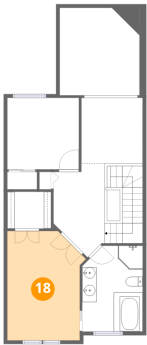


Dimensions: 8'5" x 11'11"
Area: 96 sq. ft
Counted as living area: Yes

Heated: Yes
Finished: Yes
Enclosed: Yes
Contiguous: Yes
Permitted: Yes
Wet space: Yes
Addition: No
Conversion: No

4446 Wildmint Square, Riverside South, Gloucester, Ontario,
Canada, K1V 1N6

18 Floor 3 - Primary Bedroom



Dimensions: 10'10" x 15'2"
Area: 149 sq. ft
Counted as living area: Yes

Heated: Yes
Finished: Yes
Enclosed: Yes
Contiguous: Yes
Permitted: Yes
Wet space: No
Addition: No
Conversion: No

19 Floor 3 - Bedroom



Dimensions: 9'11" x 9'11"
Area: 99 sq. ft
Counted as living area: Yes

Heated: Yes
Finished: Yes
Enclosed: Yes
Contiguous: Yes
Permitted: Yes
Wet space: No
Addition: No
Conversion: No