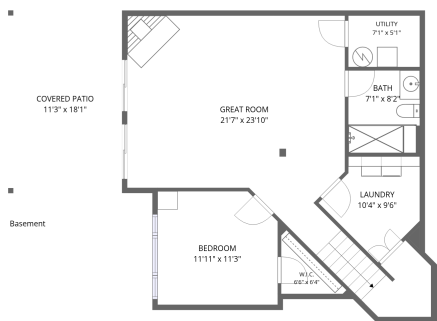
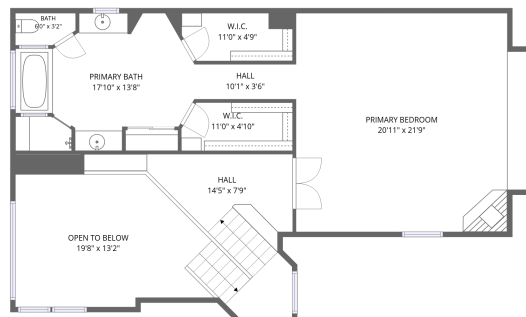


# Home data report

## 667 Trailside Dr, Golden, CO, US



**Total Area: 2699 sq. ft**

Basement: 768 sq. ft, 1st Floor: 858 sq. ft, 2nd Floor: 1073 sq. ft

Excluded: Covered patio 205 sq. ft, Utility 36 sq. ft, Balcony 193 sq. ft, Garage 453 sq. ft, Open to below 221 sq. ft, Walls: 245 sq. ft

### Property summary

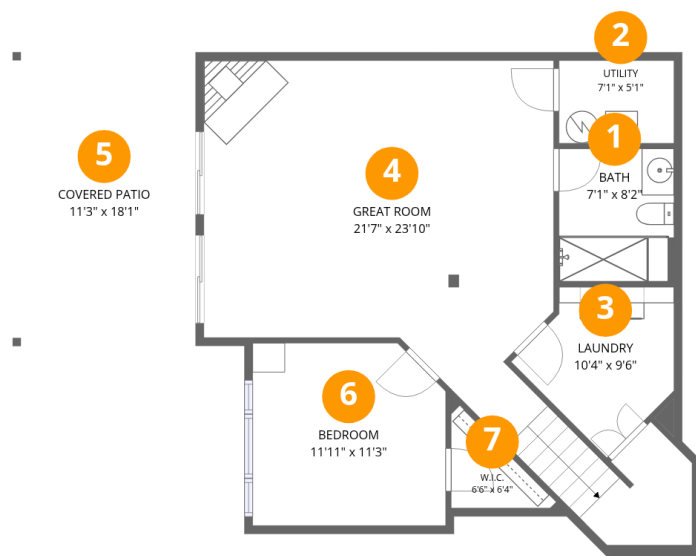


Home data report

# 667 Trailside Dr, Golden, CO, US

 **1**  
Half baths

 **1**  
Garages



## Room dimensions

Floor 1 Below grade

Total: 768 sqft

Excluded: 241 sqft

| # |               | Dimensions     | sqft       | Counted as living area |
|---|---------------|----------------|------------|------------------------|
| 1 | Bath          | 7'1" x 8'2"    | 58 sq. ft  | Yes                    |
| 2 | Utility       | 7'1" x 5'1"    | 36 sq. ft  | No                     |
| 3 | Laundry       | 10'4" x 9'6"   | 71 sq. ft  | Yes                    |
| 4 | Great Room    | 21'7" x 23'10" | 455 sq. ft | Yes                    |
| 5 | Covered Patio | 11'3" x 18'1"  | 205 sq. ft | No                     |
| 6 | Bedroom       | 11'11" x 11'3" | 130 sq. ft | Yes                    |
| 7 | W.I.C.        | 6'6" x 6'4"    | 24 sq. ft  | Yes                    |



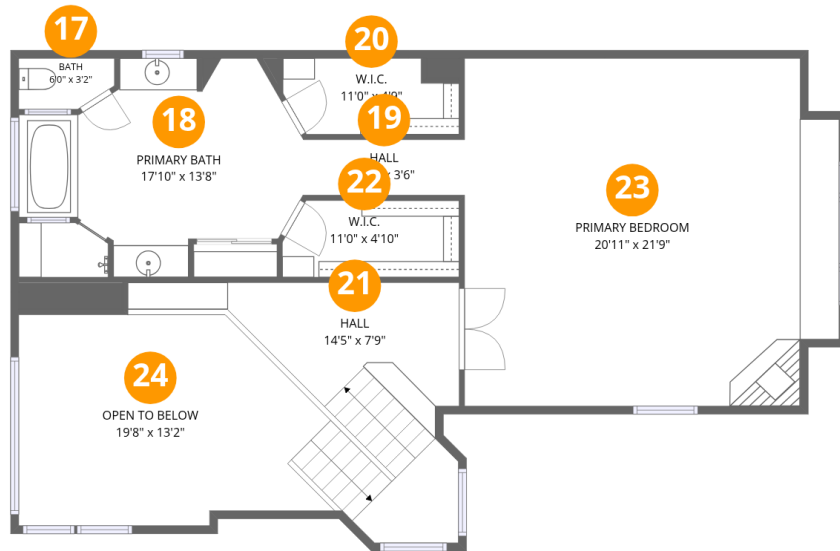
## Room dimensions

Floor 2

Total: 858 sqft

Excluded: 646 sqft

| #  |             | Dimensions     | sqft       | Counted as living area |
|----|-------------|----------------|------------|------------------------|
| 8  | Foyer       | 9'6" x 9'3"    | 148 sq. ft | Yes                    |
| 9  | Living Room | 11'11" x 15'2" | 169 sq. ft | Yes                    |
| 10 | Bath        | 3'7" x 8'7"    | 31 sq. ft  | Yes                    |
| 11 | Garage      | 22'4" x 20'4"  | 453 sq. ft | No                     |
| 12 | Balcony     | 11'1" x 17'5"  | 193 sq. ft | No                     |
| 13 | Kitchen     | 13'1" x 14'0"  | 145 sq. ft | Yes                    |
| 14 | Dining Area | 14'1" x 10'2"  | 139 sq. ft | Yes                    |
| 15 | Family Room | 9'5" x 17'1"   | 161 sq. ft | Yes                    |
| 16 | Hall        | 4'9" x 5'8"    | 26 sq. ft  | Yes                    |



## Room dimensions

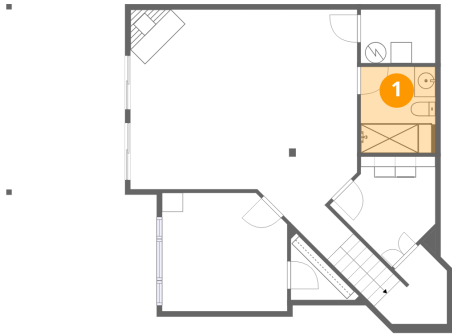
Floor 3

Total: 1073 sqft

Excluded: 221 sqft

| #  |                 | Dimensions     | sqft       | Counted as living area |
|----|-----------------|----------------|------------|------------------------|
| 17 | Bath            | 6'0" x 3'2"    | 17 sq. ft  | Yes                    |
| 18 | Primary Bath    | 17'10" x 13'8" | 193 sq. ft | Yes                    |
| 19 | Hall            | 10'1" x 3'6"   | 35 sq. ft  | Yes                    |
| 20 | W.I.C.          | 11'0" x 4'9"   | 47 sq. ft  | Yes                    |
| 21 | Hall            | 14'5" x 7'9"   | 177 sq. ft | Yes                    |
| 22 | W.I.C.          | 11'0" x 4'10"  | 51 sq. ft  | Yes                    |
| 23 | Primary Bedroom | 20'11" x 21'9" | 489 sq. ft | Yes                    |
| 24 | Open To Below   | 19'8" x 13'2"  | 221 sq. ft | No                     |

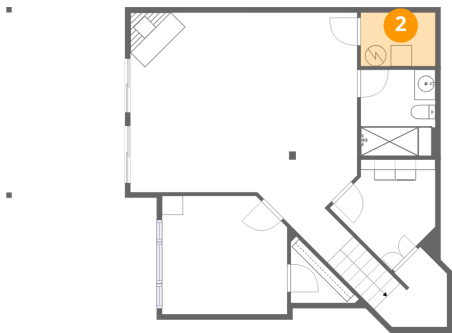
## 1 Floor 1 - Bath



Dimensions: 7'1" x 8'2"  
Area: 58 sq. ft  
Counted as living area: Yes

Heated: Yes  
Finished: Yes  
Enclosed: Yes  
Contiguous: Yes  
Permitted: Yes  
Wet space: Yes  
Addition: No  
Conversion: No

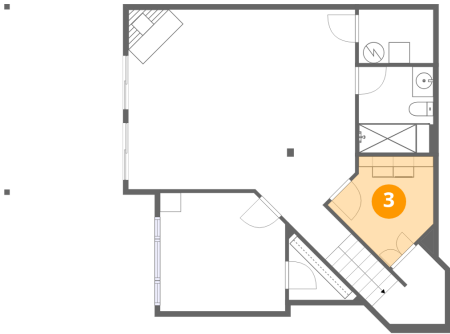
## 2 Floor 1 - Utility



Dimensions: 7'1" x 5'1"  
Area: 36 sq. ft  
Counted as living area: No

Heated: Yes  
Finished: No  
Enclosed: Yes  
Contiguous: Yes  
Permitted: Yes  
Wet space: No  
Addition: No  
Conversion: No

### 3 Floor 1 - Laundry



Dimensions: 10'4" x 9'6"  
Area: 71 sq. ft  
Counted as living area: Yes

Heated: Yes  
Finished: Yes  
Enclosed: Yes  
Contiguous: Yes  
Permitted: Yes  
Wet space: No  
Addition: No  
Conversion: No

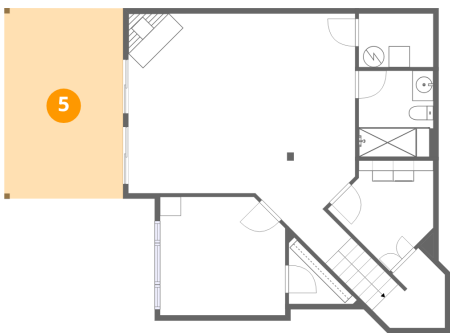
### 4 Floor 1 - Great Room



Dimensions: 21'7" x 23'10"  
Area: 455 sq. ft  
Counted as living area: Yes

Heated: Yes  
Finished: Yes  
Enclosed: Yes  
Contiguous: Yes  
Permitted: Yes  
Wet space: No  
Addition: No  
Conversion: No

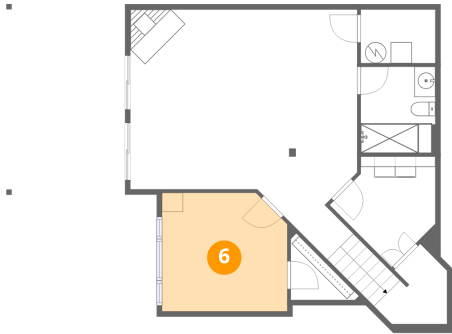
### 5 Floor 1 - Covered Patio



Dimensions: 11'3" x 18'1"  
Area: 205 sq. ft  
Counted as living area: No

Heated: No  
Finished: No  
Enclosed: No  
Contiguous: Yes  
Permitted: Yes  
Wet space: No  
Addition: No  
Conversion: No

## 6 Floor 1 - Bedroom



Dimensions: 11'11" x 11'3"  
Area: 130 sq. ft  
Counted as living area: Yes

Heated: Yes  
Finished: Yes  
Enclosed: Yes  
Contiguous: Yes  
Permitted: Yes  
Wet space: No  
Addition: No  
Conversion: No

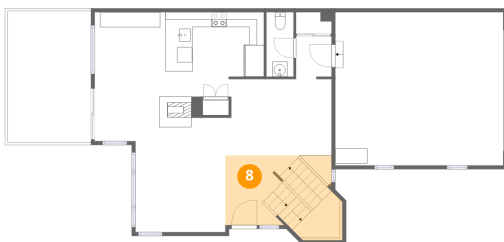
## 7 Floor 1 - W.I.C.



Dimensions: 6'6" x 6'4"  
Area: 24 sq. ft  
Counted as living area: Yes

Heated: Yes  
Finished: Yes  
Enclosed: Yes  
Contiguous: Yes  
Permitted: Yes  
Wet space: No  
Addition: No  
Conversion: No

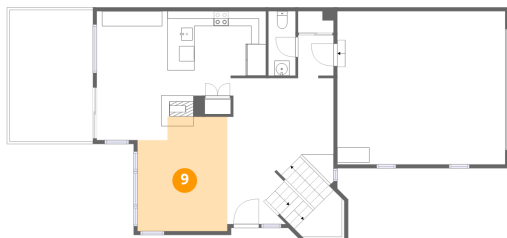
## 8 Floor 2 - Foyer



Dimensions: 9'6" x 9'3"  
Area: 148 sq. ft  
Counted as living area: Yes

Heated: Yes  
Finished: Yes  
Enclosed: Yes  
Contiguous: Yes  
Permitted: Yes  
Wet space: No  
Addition: No  
Conversion: No

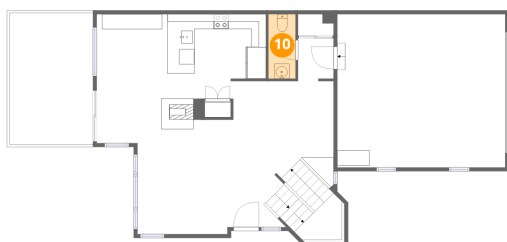
### 9 Floor 2 - Living Room



Dimensions: 11'11" x 15'2"  
Area: 169 sq. ft  
Counted as living area: Yes

Heated: Yes  
Finished: Yes  
Enclosed: Yes  
Contiguous: Yes  
Permitted: Yes  
Wet space: No  
Addition: No  
Conversion: No

### 10 Floor 2 - Bath



Dimensions: 3'7" x 8'7"  
Area: 31 sq. ft  
Counted as living area: Yes

Heated: Yes  
Finished: Yes  
Enclosed: Yes  
Contiguous: Yes  
Permitted: Yes  
Wet space: Yes  
Addition: No  
Conversion: No

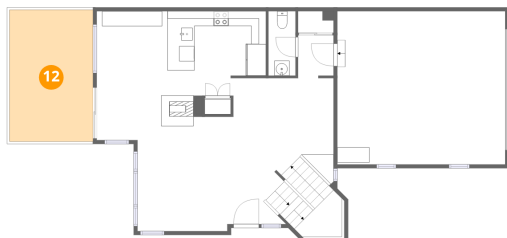
### 11 Floor 2 - Garage



Dimensions: 22'4" x 20'4"  
Area: 453 sq. ft  
Counted as living area: No

Heated: No  
Finished: No  
Enclosed: Yes  
Contiguous: Yes  
Permitted: Yes  
Wet space: No  
Addition: No  
Conversion: No

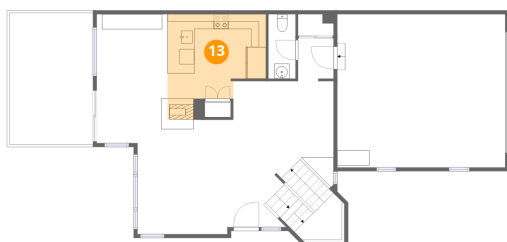
## 12 Floor 2 - Balcony



Dimensions: 11'1" x 17'5"  
Area: 193 sq. ft  
Counted as living area: No

Heated: No  
Finished: No  
Enclosed: No  
Contiguous: Yes  
Permitted: Yes  
Wet space: No  
Addition: No  
Conversion: No

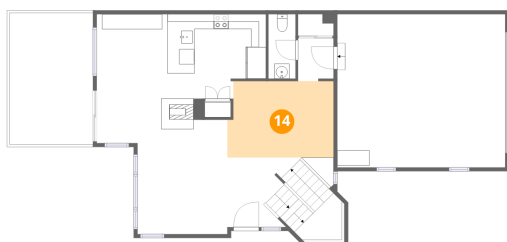
## 13 Floor 2 - Kitchen



Dimensions: 13'1" x 14'0"  
Area: 145 sq. ft  
Counted as living area: Yes

Heated: Yes  
Finished: Yes  
Enclosed: Yes  
Contiguous: Yes  
Permitted: Yes  
Wet space: No  
Addition: No  
Conversion: No

## 14 Floor 2 - Dining Area



Dimensions: 14'1" x 10'2"  
Area: 139 sq. ft  
Counted as living area: Yes

Heated: Yes  
Finished: Yes  
Enclosed: Yes  
Contiguous: Yes  
Permitted: Yes  
Wet space: No  
Addition: No  
Conversion: No

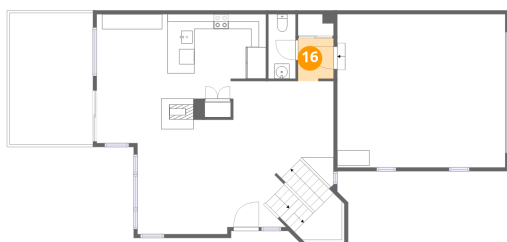
### 15 Floor 2 - Family Room



Dimensions: 9'5" x 17'1"  
Area: 161 sq. ft  
Counted as living area: Yes

Heated: Yes  
Finished: Yes  
Enclosed: Yes  
Contiguous: Yes  
Permitted: Yes  
Wet space: No  
Addition: No  
Conversion: No

### 16 Floor 2 - Hall



Dimensions: 4'9" x 5'8"  
Area: 26 sq. ft  
Counted as living area: Yes

Heated: Yes  
Finished: Yes  
Enclosed: Yes  
Contiguous: Yes  
Permitted: Yes  
Wet space: No  
Addition: No  
Conversion: No

### 17 Floor 3 - Bath



Dimensions: 6'0" x 3'2"  
Area: 17 sq. ft  
Counted as living area: Yes

Heated: Yes  
Finished: Yes  
Enclosed: Yes  
Contiguous: Yes  
Permitted: Yes  
Wet space: Yes  
Addition: No  
Conversion: No

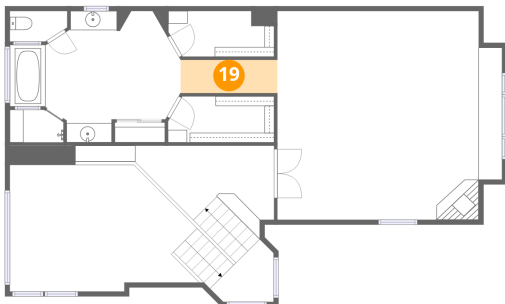
**18** Floor 3 - Primary Bath



Dimensions: 17'10" x 13'8"  
Area: 193 sq. ft  
Counted as living area: Yes

Heated: Yes  
Finished: Yes  
Enclosed: Yes  
Contiguous: Yes  
Permitted: Yes  
Wet space: Yes  
Addition: No  
Conversion: No

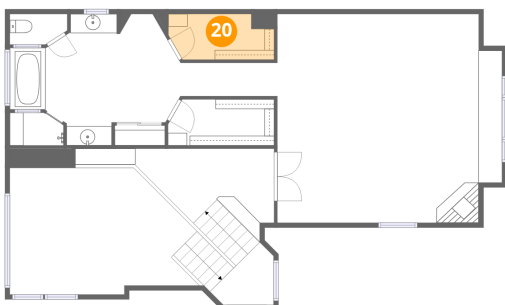
**19** Floor 3 - Hall



Dimensions: 10'1" x 3'6"  
Area: 35 sq. ft  
Counted as living area: Yes

Heated: Yes  
Finished: Yes  
Enclosed: Yes  
Contiguous: Yes  
Permitted: Yes  
Wet space: No  
Addition: No  
Conversion: No

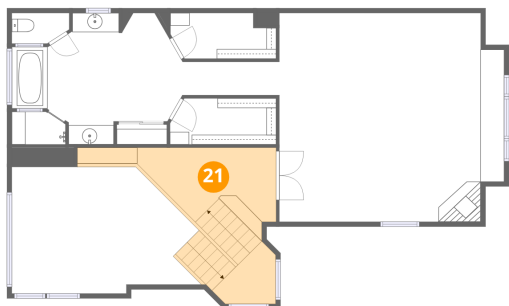
**20** Floor 3 - W.I.C.



Dimensions: 11'0" x 4'9"  
Area: 47 sq. ft  
Counted as living area: Yes

Heated: Yes  
Finished: Yes  
Enclosed: Yes  
Contiguous: Yes  
Permitted: Yes  
Wet space: No  
Addition: No  
Conversion: No

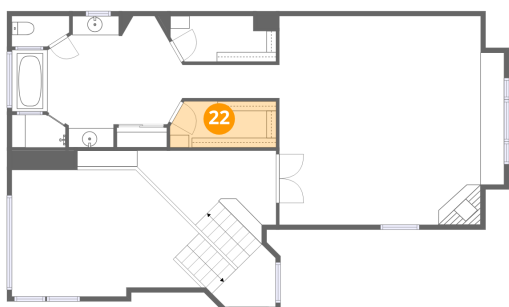
### 21 Floor 3 - Hall



Dimensions: 14'5" x 7'9"  
Area: 177 sq. ft  
Counted as living area: Yes

Heated: Yes  
Finished: Yes  
Enclosed: Yes  
Contiguous: Yes  
Permitted: Yes  
Wet space: No  
Addition: No  
Conversion: No

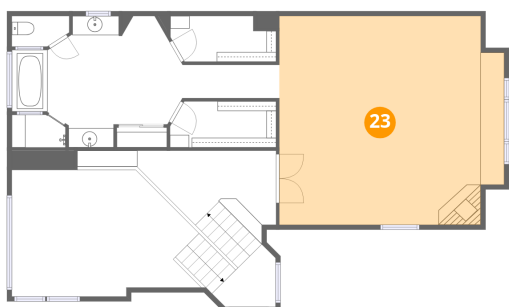
### 22 Floor 3 - W.I.C.



Dimensions: 11'0" x 4'10"  
Area: 51 sq. ft  
Counted as living area: Yes

Heated: Yes  
Finished: Yes  
Enclosed: Yes  
Contiguous: Yes  
Permitted: Yes  
Wet space: No  
Addition: No  
Conversion: No

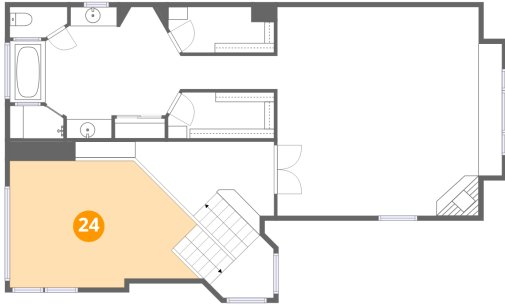
### 23 Floor 3 - Primary Bedroom



Dimensions: 20'11" x 21'9"  
Area: 489 sq. ft  
Counted as living area: Yes

Heated: Yes  
Finished: Yes  
Enclosed: Yes  
Contiguous: Yes  
Permitted: Yes  
Wet space: No  
Addition: No  
Conversion: No

**24** Floor 3 - Open To Below



Dimensions: 19'8" x 13'2"  
Area: 221 sq. ft  
Counted as living area: No

Heated: No  
Finished: No  
Enclosed: No  
Contiguous: Yes  
Permitted: No  
Wet space: No  
Addition: No  
Conversion: No