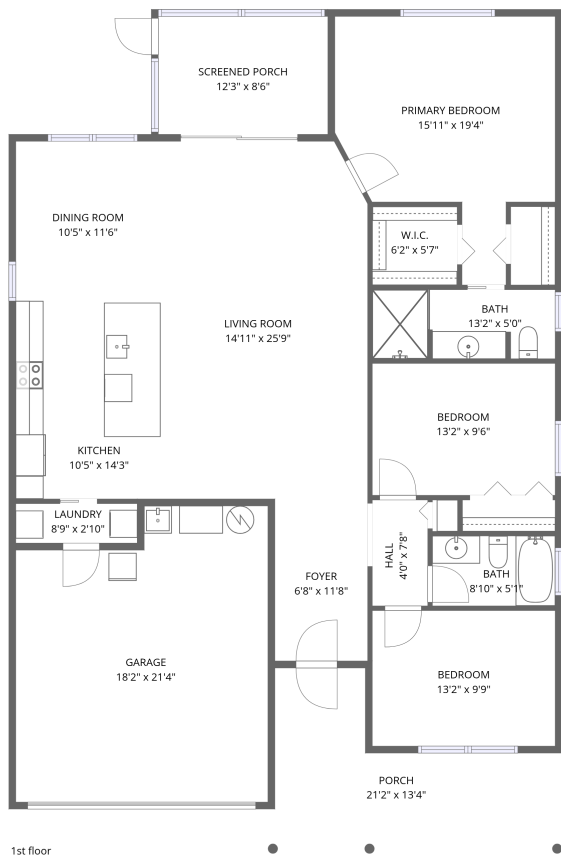


Home data report

11446 Sinatra Court, Summertree, New Port Richey, Pasco County, Florida, United States, 34654



Total Area: 1848 sq. ft

1st Floor: 1848 sq. ft

Excluded: Porch 192 sq. ft, Screened porch 104 sq. ft, Walls: 130 sq. ft

Property summary

1 Floors

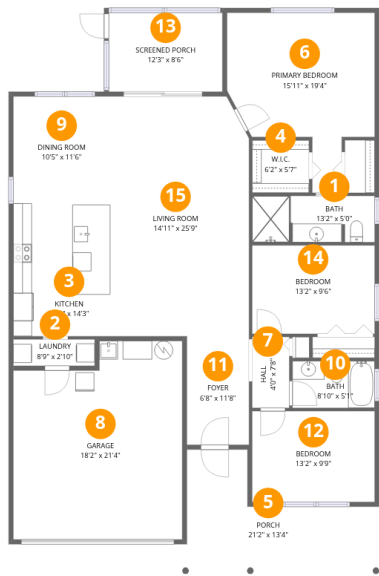
3 Bedrooms

2 Bathrooms

1 Garages

Home data report

11446 Sinatra Court, Summertree, New Port Richey, Pasco County, Florida, United States, 34654



Room dimensions

Floor 1 Total:1848sqft Excluded: 296sqft

#		Dimensions	sqft	Counted as living area
1	Bath	13'2" x 5'0"	64 sq. ft	Yes
2	Laundry	8'9" x 2'10"	25 sq. ft	Yes
3	Kitchen	10'5" x 14'3"	148 sq. ft	Yes
4	W.I.C.	6'2" x 5'7"	35 sq. ft	Yes
5	Porch	21'2" x 13'4"	192 sq. ft	No
6	Primary Bedroom	15'11" x 19'4"	225 sq. ft	Yes
7	Hall	4'0" x 7'8"	31 sq. ft	Yes
8	Garage	18'2" x 21'4"	358 sq. ft	Yes
9	Dining Room	10'5" x 11'6"	120 sq. ft	Yes
10	Bath	8'10" x 5'1"	45 sq. ft	Yes
11	Foyer	6'8" x 11'8"	78 sq. ft	Yes

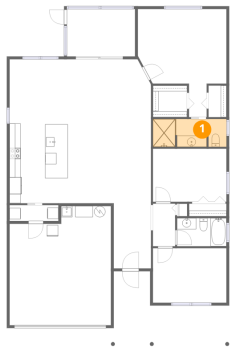
Home data report

11446 Sinatra Court, Summertree, New Port Richey, Pasco
County, Florida, United States, 34654

#		Dimensions	sqft	Counted as living area
12	Bedroom	13'2" x 9'9"	129 sq. ft	Yes
13	Screened Porch	12'3" x 8'6"	104 sq. ft	No
14	Bedroom	13'2" x 9'6"	125 sq. ft	Yes
15	Living Room	14'11" x 25'9"	380 sq. ft	Yes

11446 Sinatra Court, Summertree, New Port Richey, Pasco
County, Florida, United States, 34654

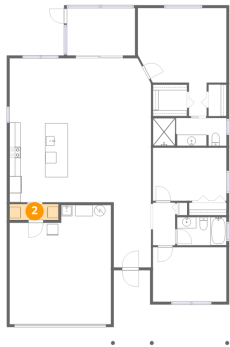
1 Floor 1 - Bath



Dimensions: 13'2" x 5'0"
Area: 64 sq. ft
Counted as living area: Yes

Heated: Yes
Finished: Yes
Enclosed: Yes
Contiguous: Yes
Permitted: Yes
Wet space: Yes
Addition: No
Conversion: No

2 Floor 1 - Laundry



Dimensions: 8'9" x 2'10"
Area: 25 sq. ft
Counted as living area: Yes

Heated: Yes
Finished: Yes
Enclosed: Yes
Contiguous: Yes
Permitted: Yes
Wet space: No
Addition: No
Conversion: No

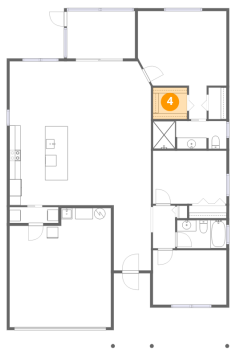
3 Floor 1 - Kitchen



Dimensions: 10'5" x 14'3"
Area: 148 sq. ft
Counted as living area: Yes

Heated: Yes
Finished: Yes
Enclosed: Yes
Contiguous: Yes
Permitted: Yes
Wet space: No
Addition: No
Conversion: No

4 Floor 1 - W.I.C.



Dimensions: 6'2" x 5'7"
Area: 35 sq. ft
Counted as living area: Yes

Heated: Yes
Finished: Yes
Enclosed: Yes
Contiguous: Yes
Permitted: Yes
Wet space: No
Addition: No
Conversion: No

5 Floor 1 - Porch



Dimensions: 21'2" x 13'4"
Area: 192 sq. ft
Counted as living area: No

Heated: No
Finished: No
Enclosed: No
Contiguous: Yes
Permitted: Yes
Wet space: No
Addition: No
Conversion: No

6 Floor 1 - Primary Bedroom



Dimensions: 15'11" x 19'4"
Area: 225 sq. ft
Counted as living area: Yes

Heated: Yes
Finished: Yes
Enclosed: Yes
Contiguous: Yes
Permitted: Yes
Wet space: No
Addition: No
Conversion: No

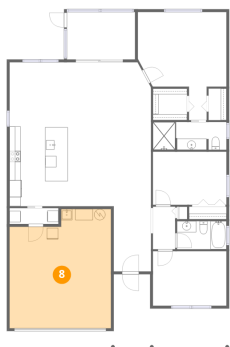
7 Floor 1 - Hall



Dimensions: 4'0" x 7'8"
Area: 31 sq. ft
Counted as living area: Yes

Heated: Yes
Finished: Yes
Enclosed: Yes
Contiguous: Yes
Permitted: Yes
Wet space: No
Addition: No
Conversion: No

8 Floor 1 - Garage



Dimensions: 18'2" x 21'4"
Area: 358 sq. ft
Counted as living area: No

Heated: No
Finished: Yes
Enclosed: Yes
Contiguous: Yes
Permitted: Yes
Wet space: No
Addition: No
Conversion: No

11446 Sinatra Court, Summertree, New Port Richey, Pasco
County, Florida, United States, 34654

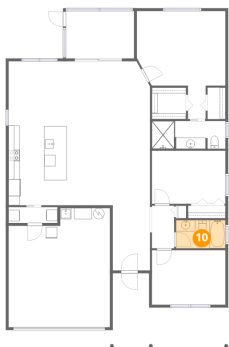
9 Floor 1 - Dining Room



Dimensions: 10'5" x 11'6"
Area: 120 sq. ft
Counted as living area: Yes

Heated: Yes
Finished: Yes
Enclosed: Yes
Contiguous: Yes
Permitted: Yes
Wet space: No
Addition: No
Conversion: No

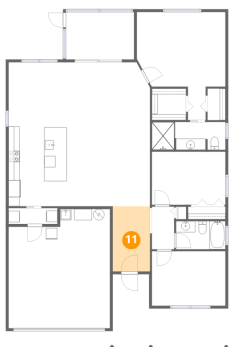
10 Floor 1 - Bath



Dimensions: 8'10" x 5'1"
Area: 45 sq. ft
Counted as living area: Yes

Heated: Yes
Finished: Yes
Enclosed: Yes
Contiguous: Yes
Permitted: Yes
Wet space: Yes
Addition: No
Conversion: No

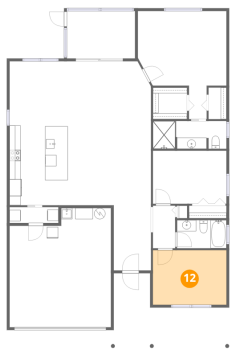
11 Floor 1 - Foyer



Dimensions: 6'8" x 11'8"
Area: 78 sq. ft
Counted as living area: Yes

Heated: Yes
Finished: Yes
Enclosed: Yes
Contiguous: Yes
Permitted: Yes
Wet space: No
Addition: No
Conversion: No

12 Floor 1 - Bedroom



Dimensions: 13'2" x 9'9"
Area: 129 sq. ft
Counted as living area: Yes

Heated: Yes
Finished: Yes
Enclosed: Yes
Contiguous: Yes
Permitted: Yes
Wet space: No
Addition: No
Conversion: No

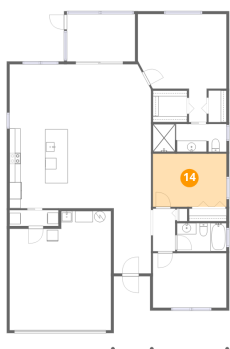
13 Floor 1 - Screened Porch



Dimensions: 12'3" x 8'6"
Area: 104 sq. ft
Counted as living area: No

Heated: No
Finished: No
Enclosed: No
Contiguous: Yes
Permitted: Yes
Wet space: No
Addition: No
Conversion: No

14 Floor 1 - Bedroom

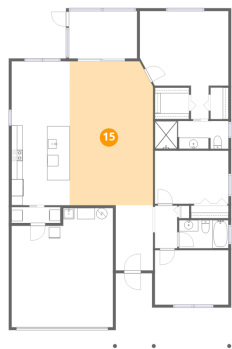


Dimensions: 13'2" x 9'6"
Area: 125 sq. ft
Counted as living area: Yes

Heated: Yes
Finished: Yes
Enclosed: Yes
Contiguous: Yes
Permitted: Yes
Wet space: No
Addition: No
Conversion: No

11446 Sinatra Court, Summertree, New Port Richey, Pasco
County, Florida, United States, 34654

15 Floor 1 - Living Room



Dimensions: 14'11" x 25'9"
Area: 380 sq. ft
Counted as living area: Yes

Heated: Yes
Finished: Yes
Enclosed: Yes
Contiguous: Yes
Permitted: Yes
Wet space: No
Addition: No
Conversion: No