



Jack Klemm - Broker/REALTOR®

Klemm Real Estate

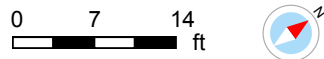
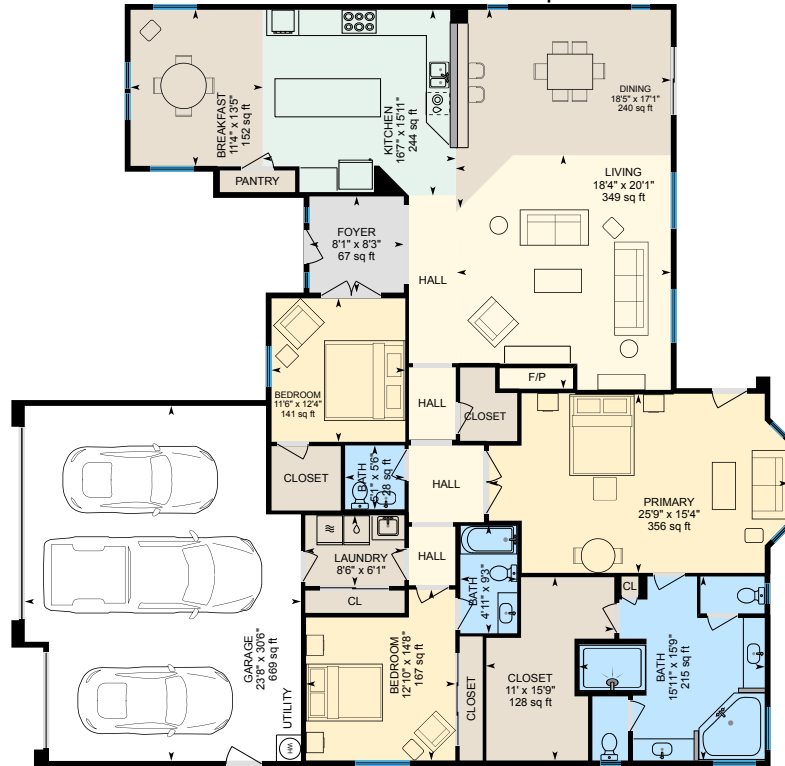
209-321-1094

jack@klemmre.com

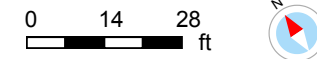
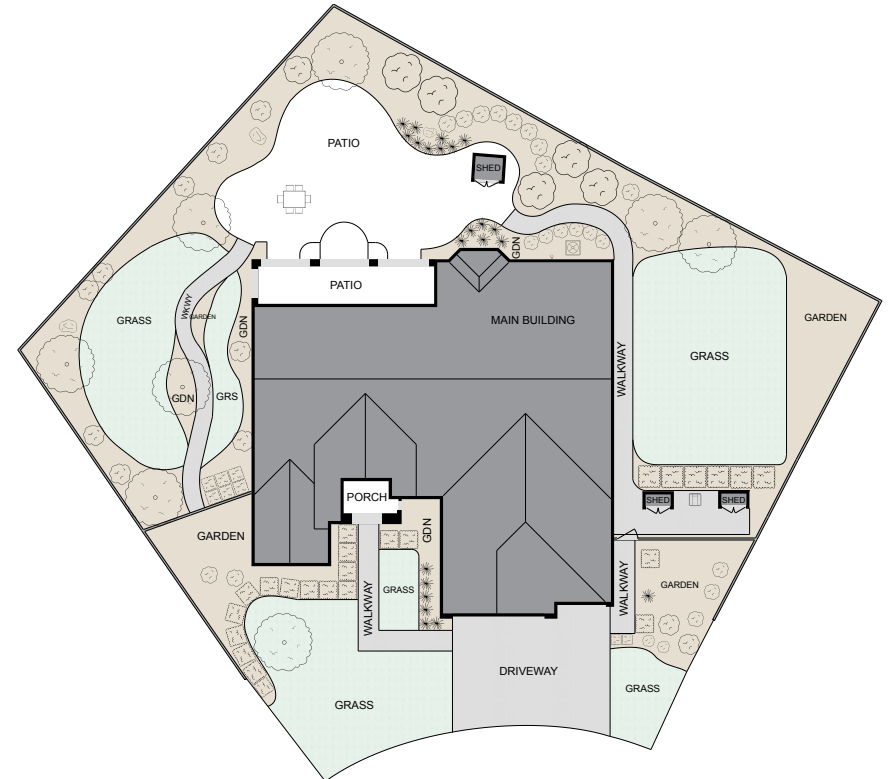


## Main Floor

Finished Area 2680.54 sq ft



## Site Plan



## 2498 Pepper Tree Ln, Manteca, CA

For illustrative purposes only. All reported dimensions, property sizes and floor areas are approximate and subject to independent verification. To the extent permitted by law, no warranty is made as to accuracy or completeness, and no liability will be accepted for any errors or omissions.



Powered by **iGUIDE**