

Home data report

128 East Ross Street, Lancaster, Lancaster County,  
Pennsylvania, United States, 17602



Total Area: 2400 sq. ft

Basement 1: 407 sq. ft, 1st Floor: 811 sq. ft, 2nd Floor: 792 sq. ft, 3rd Floor: 390 sq. ft  
Excluded: Laundry 158 sq. ft, Porch 135 sq. ft, Walls: 199 sq. ft

Property summary

 **4** Floors

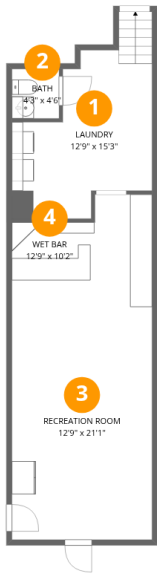
 **5** Bedrooms

 **1** Bathrooms

 **1** Half baths

Home data report

128 East Ross Street, Lancaster, Lancaster County,  
Pennsylvania, United States, 17602



Room dimensions

Floor 1 Below grade Total:407sqft   Excluded: 158sqft

#		Dimensions	sqft	Counted as living area
1	Laundry	12'9" x 15'3"	194 sq. ft	No
2	Bath	4'3" x 4'6"	19 sq. ft	Yes
3	Recreation Room	12'9" x 21'1"	268 sq. ft	Yes
4	Wet Bar	12'9" x 10'2"	130 sq. ft	Yes

Home data report

128 East Ross Street, Lancaster, Lancaster County,  
Pennsylvania, United States, 17602



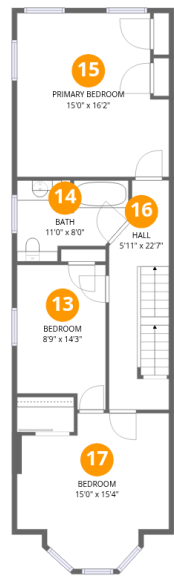
Room dimensions

Floor 2 Total:811sqft   Excluded: 135sqft

#		Dimensions	sqft	Counted as living area
5	Entry	6'6" x 6'0"	39 sq. ft	Yes
6	Foyer	3'5" x 4'7"	16 sq. ft	Yes
7	Living Room	11'2" x 13'5"	149 sq. ft	Yes
8	Eat-in Kitchen	14'11" x 10'3"	153 sq. ft	Yes
9	Dining Area	14'11" x 14'0"	209 sq. ft	Yes
10	Hall	4'4" x 8'9"	38 sq. ft	Yes
11	Porch	15'3" x 8'0"	122 sq. ft	No
12	Family Room	14'11" x 12'2"	182 sq. ft	Yes

Home data report

128 East Ross Street, Lancaster, Lancaster County,  
Pennsylvania, United States, 17602



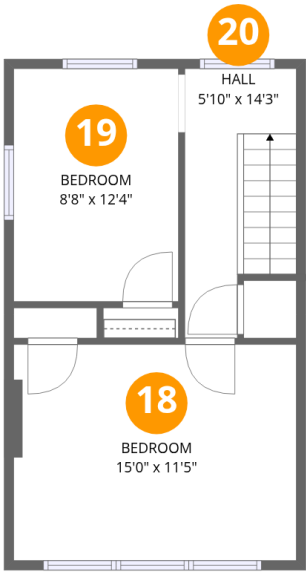
Room dimensions

Floor 3 Total:792sqft Excluded: 0sqft

#		Dimensions	sqft	Counted as living area
13	Bedroom	8'9" x 14'3"	125 sq. ft	Yes
14	Bath	11'0" x 8'0"	88 sq. ft	Yes
15	Primary Bedroom	15'0" x 16'2"	242 sq. ft	Yes
16	Hall	5'11" x 22'7"	134 sq. ft	Yes
17	Bedroom	15'0" x 15'4"	230 sq. ft	Yes

Home data report

128 East Ross Street, Lancaster, Lancaster County,  
Pennsylvania, United States, 17602

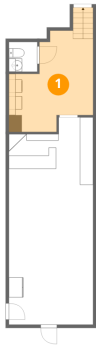


Room dimensions

Floor 4 Total:390sqft Excluded: 0sqft

#		Dimensions	sqft	Counted as living area
18	Bedroom	15'0" x 11'5"	171 sq. ft	Yes
19	Bedroom	8'8" x 12'4"	107 sq. ft	Yes
20	Hall	5'10" x 14'3"	84 sq. ft	Yes

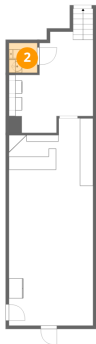
1 Floor 1 - Laundry



Dimensions: 12'9" x 15'3"  
Area: 194 sq. ft  
Counted as living area: No

Heated: Yes  
Finished: No  
Enclosed: Yes  
Contiguous: Yes  
Permitted: Yes  
Wet space: No  
Addition: No  
Conversion: No

2 Floor 1 - Bath



Dimensions: 4'3" x 4'6"  
Area: 19 sq. ft  
Counted as living area: No

Heated: Yes  
Finished: Yes  
Enclosed: Yes  
Contiguous: No  
Permitted: Yes  
Wet space: Yes  
Addition: No  
Conversion: No

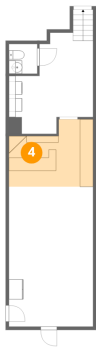
3 Floor 1 - Recreation Room



Dimensions: 12'9" x 21'1"  
Area: 268 sq. ft  
Counted as living area: No

Heated: Yes  
Finished: Yes  
Enclosed: Yes  
Contiguous: No  
Permitted: Yes  
Wet space: No  
Addition: No  
Conversion: No

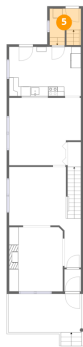
4 Floor 1 - Wet Bar



Dimensions: 12'9" x 10'2"  
Area: 130 sq. ft  
Counted as living area: No

Heated: Yes  
Finished: Yes  
Enclosed: Yes  
Contiguous: No  
Permitted: Yes  
Wet space: No  
Addition: No  
Conversion: No

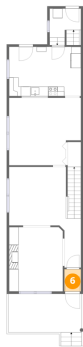
5 Floor 2 - Entry



Dimensions: 6'6" x 6'0"  
Area: 39 sq. ft  
Counted as living area: Yes

Heated: Yes  
Finished: Yes  
Enclosed: Yes  
Contiguous: Yes  
Permitted: Yes  
Wet space: No  
Addition: No  
Conversion: No

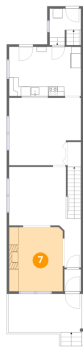
6 Floor 2 - Foyer



Dimensions: 3'5" x 4'7"  
Area: 16 sq. ft  
Counted as living area: Yes

Heated: Yes  
Finished: Yes  
Enclosed: Yes  
Contiguous: Yes  
Permitted: Yes  
Wet space: No  
Addition: No  
Conversion: No

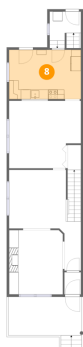
7 Floor 2 - Living Room



Dimensions: 11'2" x 13'5"  
Area: 149 sq. ft  
Counted as living area: Yes

Heated: Yes  
Finished: Yes  
Enclosed: Yes  
Contiguous: Yes  
Permitted: Yes  
Wet space: No  
Addition: No  
Conversion: No

8 Floor 2 - Eat-in Kitchen



Dimensions: 14'11" x 10'3"  
Area: 153 sq. ft  
Counted as living area: Yes

Heated: Yes  
Finished: Yes  
Enclosed: Yes  
Contiguous: Yes  
Permitted: Yes  
Wet space: No  
Addition: No  
Conversion: No



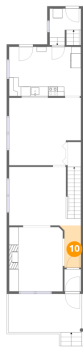
9 Floor 2 - Dining Area



Dimensions: 14'11" x 14'0"  
Area: 209 sq. ft  
Counted as living area: Yes

Heated: Yes  
Finished: Yes  
Enclosed: Yes  
Contiguous: Yes  
Permitted: Yes  
Wet space: No  
Addition: No  
Conversion: No

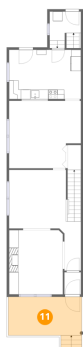
10 Floor 2 - Hall



Dimensions: 4'4" x 8'9"  
Area: 38 sq. ft  
Counted as living area: Yes

Heated: Yes  
Finished: Yes  
Enclosed: Yes  
Contiguous: Yes  
Permitted: Yes  
Wet space: No  
Addition: No  
Conversion: No

11 Floor 2 - Porch



Dimensions: 15'3" x 8'0"  
Area: 122 sq. ft  
Counted as living area: No

Heated: No  
Finished: No  
Enclosed: No  
Contiguous: Yes  
Permitted: Yes  
Wet space: No  
Addition: No  
Conversion: No

12 Floor 2 - Family Room



Dimensions: 14'11" x 12'2"  
Area: 182 sq. ft  
Counted as living area: Yes

Heated: Yes  
Finished: Yes  
Enclosed: Yes  
Contiguous: Yes  
Permitted: Yes  
Wet space: No  
Addition: No  
Conversion: No

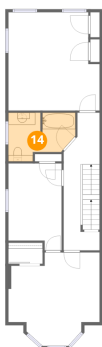
13 Floor 3 - Bedroom



Dimensions: 8'9" x 14'3"  
Area: 125 sq. ft  
Counted as living area: Yes

Heated: Yes  
Finished: Yes  
Enclosed: Yes  
Contiguous: Yes  
Permitted: Yes  
Wet space: No  
Addition: No  
Conversion: No

14 Floor 3 - Bath



Dimensions: 11'0" x 8'0"  
Area: 88 sq. ft  
Counted as living area: Yes

Heated: Yes  
Finished: Yes  
Enclosed: Yes  
Contiguous: Yes  
Permitted: Yes  
Wet space: Yes  
Addition: No  
Conversion: No

128 East Ross Street, Lancaster, Lancaster County,  
Pennsylvania, United States, 17602

### 15 Floor 3 - Primary Bedroom



Dimensions: 15'0" x 16'2"  
Area: 242 sq. ft  
Counted as living area: Yes

Heated: Yes  
Finished: Yes  
Enclosed: Yes  
Contiguous: Yes  
Permitted: Yes  
Wet space: No  
Addition: No  
Conversion: No

### 16 Floor 3 - Hall



Dimensions: 5'11" x 22'7"  
Area: 134 sq. ft  
Counted as living area: Yes

Heated: Yes  
Finished: Yes  
Enclosed: Yes  
Contiguous: Yes  
Permitted: Yes  
Wet space: No  
Addition: No  
Conversion: No

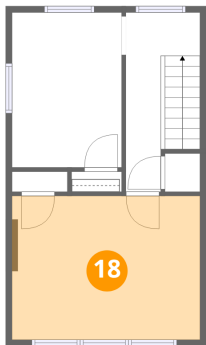
### 17 Floor 3 - Bedroom



Dimensions: 15'0" x 15'4"  
Area: 230 sq. ft  
Counted as living area: Yes

Heated: Yes  
Finished: Yes  
Enclosed: Yes  
Contiguous: Yes  
Permitted: Yes  
Wet space: No  
Addition: No  
Conversion: No

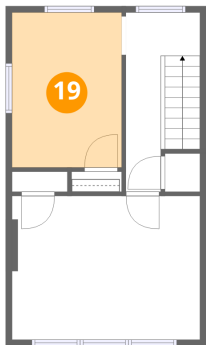
18 Floor 4 - Bedroom



Dimensions: 15'0" x 11'5"  
Area: 171 sq. ft  
Counted as living area: Yes

Heated: Yes  
Finished: Yes  
Enclosed: Yes  
Contiguous: Yes  
Permitted: Yes  
Wet space: No  
Addition: No  
Conversion: No

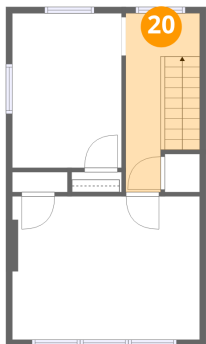
19 Floor 4 - Bedroom



Dimensions: 8'8" x 12'4"  
Area: 107 sq. ft  
Counted as living area: Yes

Heated: Yes  
Finished: Yes  
Enclosed: Yes  
Contiguous: Yes  
Permitted: Yes  
Wet space: No  
Addition: No  
Conversion: No

20 Floor 4 - Hall



Dimensions: 5'10" x 14'3"  
Area: 84 sq. ft  
Counted as living area: Yes

Heated: Yes  
Finished: Yes  
Enclosed: Yes  
Contiguous: Yes  
Permitted: Yes  
Wet space: No  
Addition: No  
Conversion: No