



Total Area: 2400 sq. ft

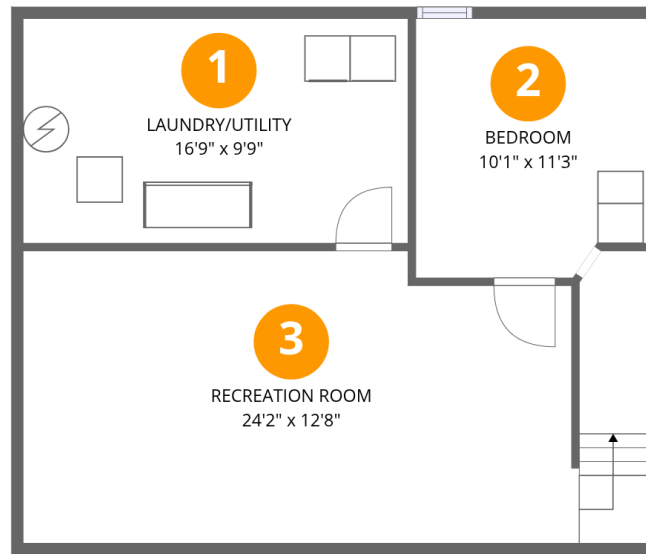
Basement: 620 sq. ft, 1st Floor: 904 sq. ft, 2nd Floor: 876 sq. ft

Excluded: Garage 450 sq. ft, Porch 142 sq. ft, Fireplace 11 sq. ft, Walls: 245 sq. ft

Property summary



10538 E Brookston Dr, Osceola, IN, US



Room dimensions

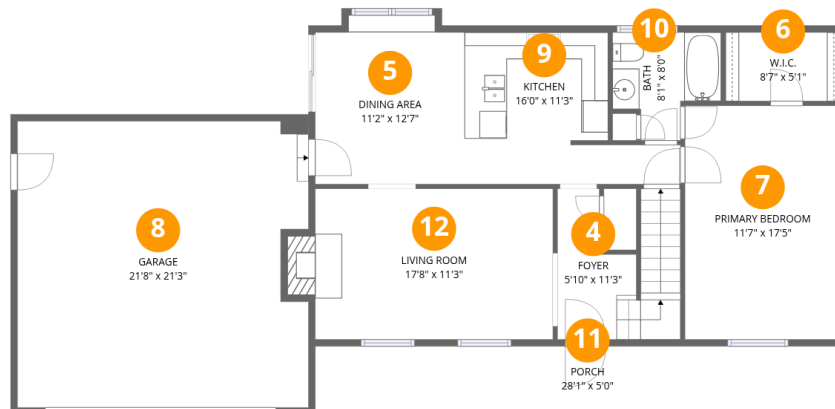
Floor 1 Below grade

Total: 620 sqft

Excluded: 0 sqft

#		Dimensions	sqft	Counted as living area
1	Laundry/Utility	16'9" x 9'9"	164 sq. ft	Yes
2	Bedroom	10'1" x 11'3"	109 sq. ft	Yes
3	Recreation Room	24'2" x 12'8"	308 sq. ft	Yes

10538 E Brookston Dr, Osceola, IN, US



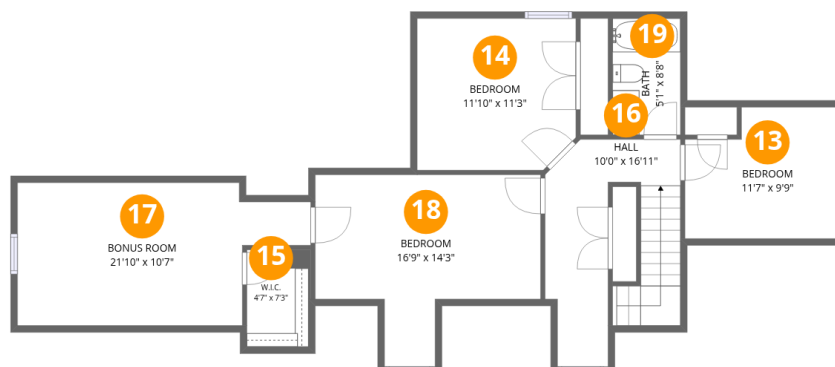
Room dimensions

Floor 2

Total: 904sqft

Excluded: 603sqft

#		Dimensions	sqft	Counted as living area
4	Foyer	5'10" x 11'3"	86 sq. ft	Yes
5	Dining Area	11'2" x 12'7"	134 sq. ft	Yes
6	W.I.C.	8'7" x 5'1"	44 sq. ft	Yes
7	Primary Bedroom	11'7" x 17'5"	201 sq. ft	Yes
8	Garage	21'8" x 21'3"	450 sq. ft	No
9	Kitchen	16'0" x 11'3"	135 sq. ft	Yes
10	Bath	8'1" x 8'0"	51 sq. ft	Yes
11	Porch	28'1" x 5'0"	142 sq. ft	No
12	Living Room	17'8" x 11'3"	207 sq. ft	Yes



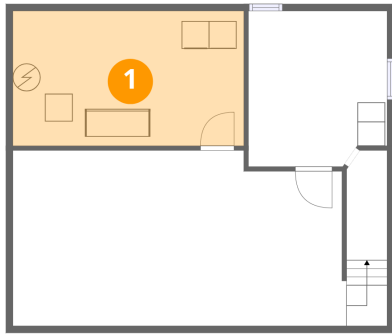
Room dimensions

Floor 3

Total: 876 sqft Excluded: 0 sqft

#		Dimensions	sqft	Counted as living area
13	Bedroom	11'7" x 9'9"	103 sq. ft	Yes
14	Bedroom	11'10" x 11'3"	130 sq. ft	Yes
15	W.I.C.	4'7" x 7'3"	34 sq. ft	Yes
16	Hall	10'0" x 16'11"	126 sq. ft	Yes
17	Bonus Room	21'10" x 10'7"	194 sq. ft	Yes
18	Bedroom	16'9" x 14'3"	174 sq. ft	Yes
19	Bath	5'1" x 8'8"	44 sq. ft	Yes

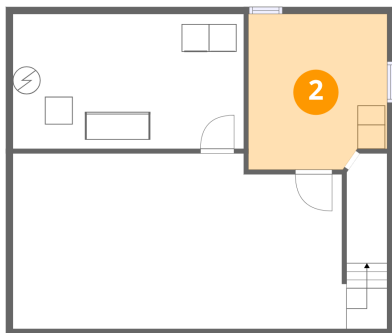
1 Floor 1 - Laundry/Utility



Dimensions: 16'9" x 9'9"
Area: 164 sq. ft
Counted as living area: Yes

Heated: Yes
Finished: Yes
Enclosed: Yes
Contiguous: Yes
Permitted: Yes
Wet space: No
Addition: No
Conversion: No

2 Floor 1 - Bedroom



Dimensions: 10'1" x 11'3"
Area: 109 sq. ft
Counted as living area: Yes

Heated: Yes
Finished: Yes
Enclosed: Yes
Contiguous: Yes
Permitted: Yes
Wet space: No
Addition: No
Conversion: No

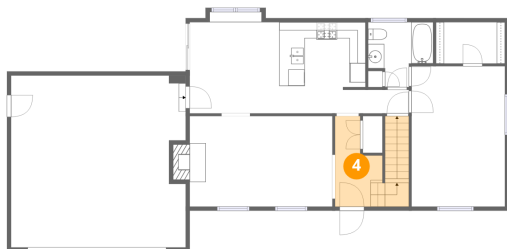
3 Floor 1 - Recreation Room



Dimensions: 24'2" x 12'8"
Area: 308 sq. ft
Counted as living area: Yes

Heated: Yes
Finished: Yes
Enclosed: Yes
Contiguous: Yes
Permitted: Yes
Wet space: No
Addition: No
Conversion: No

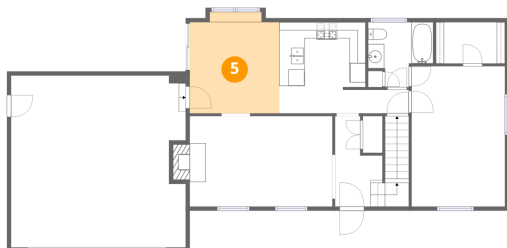
4 Floor 2 - Foyer



Dimensions: 5'10" x 11'3"
Area: 86 sq. ft
Counted as living area: Yes

Heated: Yes
Finished: Yes
Enclosed: Yes
Contiguous: Yes
Permitted: Yes
Wet space: No
Addition: No
Conversion: No

5 Floor 2 - Dining Area



Dimensions: 11'2" x 12'7"
Area: 134 sq. ft
Counted as living area: Yes

Heated: Yes
Finished: Yes
Enclosed: Yes
Contiguous: Yes
Permitted: Yes
Wet space: No
Addition: No
Conversion: No

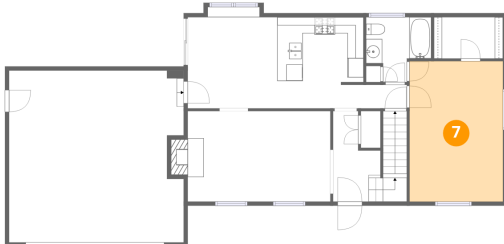
6 Floor 2 - W.I.C.



Dimensions: 8'7" x 5'1"
Area: 44 sq. ft
Counted as living area: Yes

Heated: Yes
Finished: Yes
Enclosed: Yes
Contiguous: Yes
Permitted: Yes
Wet space: No
Addition: No
Conversion: No

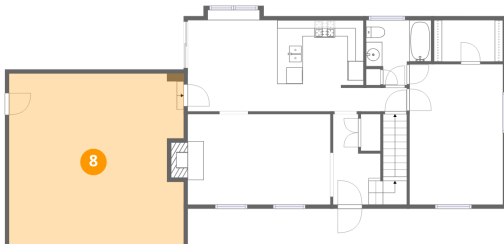
7 Floor 2 - Primary Bedroom



Dimensions: 11'7" x 17'5"
Area: 201 sq. ft
Counted as living area: Yes

Heated: Yes
Finished: Yes
Enclosed: Yes
Contiguous: Yes
Permitted: Yes
Wet space: No
Addition: No
Conversion: No

8 Floor 2 - Garage



Dimensions: 21'8" x 21'3"
Area: 450 sq. ft
Counted as living area: No

Heated: No
Finished: No
Enclosed: Yes
Contiguous: Yes
Permitted: Yes
Wet space: No
Addition: No
Conversion: No

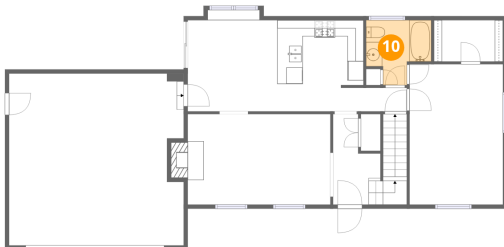
9 Floor 2 - Kitchen



Dimensions: 16'0" x 11'3"
Area: 135 sq. ft
Counted as living area: Yes

Heated: Yes
Finished: Yes
Enclosed: Yes
Contiguous: Yes
Permitted: Yes
Wet space: No
Addition: No
Conversion: No

10 Floor 2 - Bath



Dimensions: 8'1" x 8'0"
Area: 51 sq. ft
Counted as living area: Yes

Heated: Yes
Finished: Yes
Enclosed: Yes
Contiguous: Yes
Permitted: Yes
Wet space: Yes
Addition: No
Conversion: No

11 Floor 2 - Porch



Dimensions: 28'1" x 5'0"
Area: 142 sq. ft
Counted as living area: No

Heated: No
Finished: No
Enclosed: No
Contiguous: Yes
Permitted: Yes
Wet space: No
Addition: No
Conversion: No

12 Floor 2 - Living Room



Dimensions: 17'8" x 11'3"
Area: 207 sq. ft
Counted as living area: Yes

Heated: Yes
Finished: Yes
Enclosed: Yes
Contiguous: Yes
Permitted: Yes
Wet space: No
Addition: No
Conversion: No

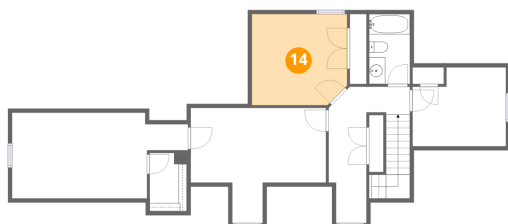
13 Floor 3 - Bedroom



Dimensions: 11'7" x 9'9"
Area: 103 sq. ft
Counted as living area: Yes

Heated: Yes
Finished: Yes
Enclosed: Yes
Contiguous: Yes
Permitted: Yes
Wet space: No
Addition: No
Conversion: No

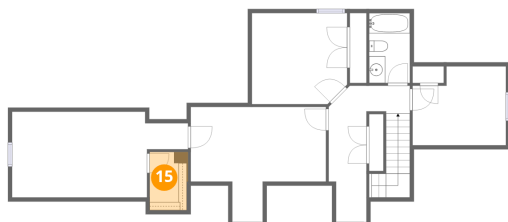
14 Floor 3 - Bedroom



Dimensions: 11'10" x 11'3"
Area: 130 sq. ft
Counted as living area: Yes

Heated: Yes
Finished: Yes
Enclosed: Yes
Contiguous: Yes
Permitted: Yes
Wet space: No
Addition: No
Conversion: No

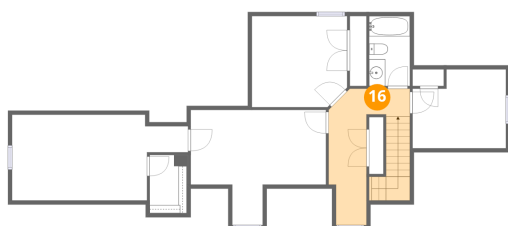
15 Floor 3 - W.I.C.



Dimensions: 4'7" x 7'3"
Area: 34 sq. ft
Counted as living area: Yes

Heated: Yes
Finished: Yes
Enclosed: Yes
Contiguous: Yes
Permitted: Yes
Wet space: No
Addition: No
Conversion: No

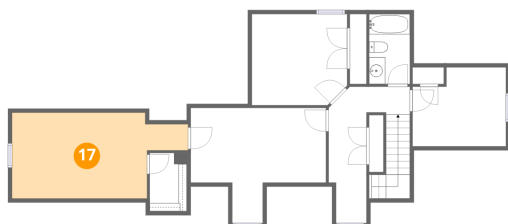
16 Floor 3 - Hall



Dimensions: 10'0" x 16'11"
Area: 126 sq. ft
Counted as living area: Yes

Heated: Yes
Finished: Yes
Enclosed: Yes
Contiguous: Yes
Permitted: Yes
Wet space: No
Addition: No
Conversion: No

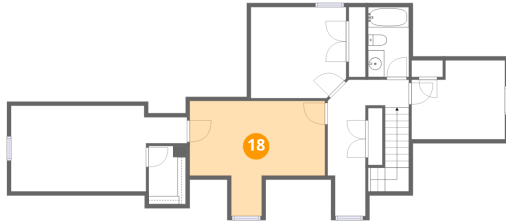
17 Floor 3 - Bonus Room



Dimensions: 21'10" x 10'7"
Area: 194 sq. ft
Counted as living area: Yes

Heated: Yes
Finished: Yes
Enclosed: Yes
Contiguous: Yes
Permitted: Yes
Wet space: No
Addition: No
Conversion: No

18 Floor 3 - Bedroom



Dimensions: 16'9" x 14'3"
Area: 174 sq. ft
Counted as living area: Yes

Heated: Yes
Finished: Yes
Enclosed: Yes
Contiguous: Yes
Permitted: Yes
Wet space: No
Addition: No
Conversion: No

19 Floor 3 - Bath



Dimensions: 5'1" x 8'8"
Area: 44 sq. ft
Counted as living area: Yes

Heated: Yes
Finished: Yes
Enclosed: Yes
Contiguous: Yes
Permitted: Yes
Wet space: Yes
Addition: No
Conversion: No