

Home data report

2924 R29 Road, Portland, United Counties of Leeds and Grenville, Ontario, Canada, K0G 1V0



Total Area: 2334 sq. ft

Basement: 473 sq. ft, 1st Floor: 957 sq. ft, 2nd Floor: 904 sq. ft

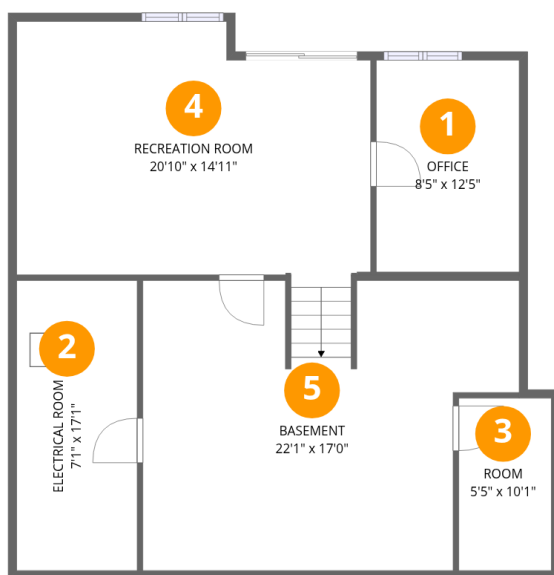
Excluded: Electrical room 127 sq. ft, Basement 336 sq. ft, Screened porch 138 sq. ft, Walls: 210 sq. ft

Property summary



Home data report

2924 R29 Road, Portland, United Counties of Leeds and Grenville, Ontario, Canada, K0G 1V0



Room dimensions

Floor 1 Below grade

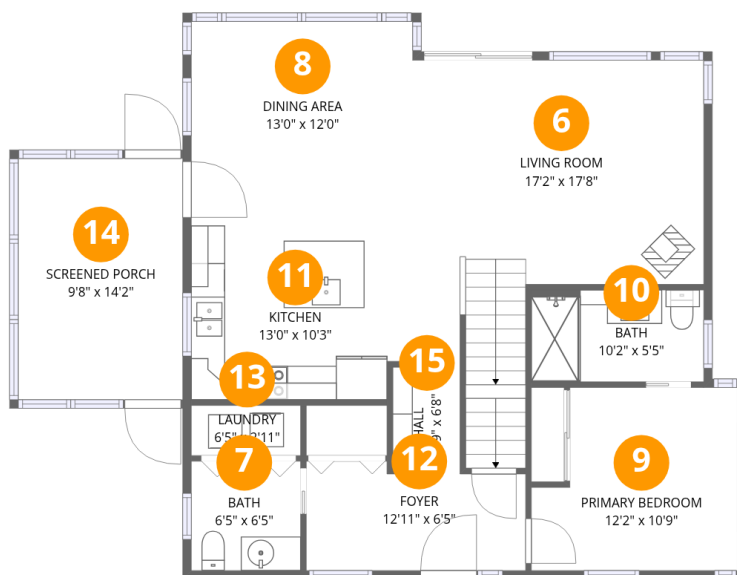
Total:473sqft

Excluded: 463sqft

#		Dimensions	sqft	Counted as living area
1	Office	8'5" x 12'5"	106 sq. ft	Yes
2	Electrical Room	7'1" x 17'1"	121 sq. ft	No
3	Room	5'5" x 10'1"	55 sq. ft	Yes
4	Recreation Room	20'10" x 14'11"	294 sq. ft	Yes
5	Basement	22'1" x 17'0"	332 sq. ft	No

Home data report

2924 R29 Road, Portland, United Counties of Leeds and Grenville, Ontario, Canada, K0G 1V0



Room dimensions

Floor 2

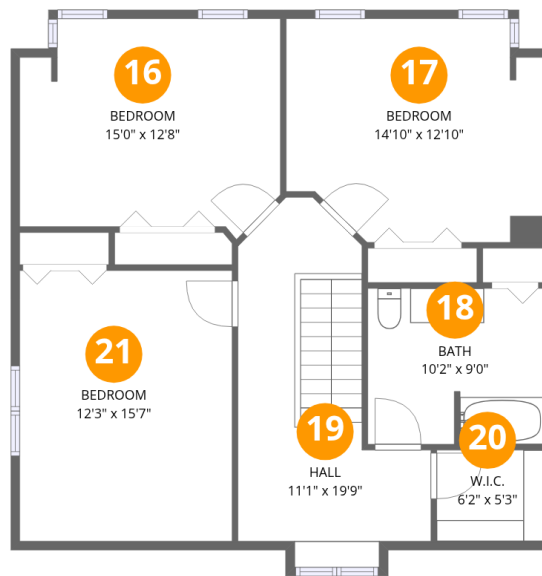
Total:957sqft

Excluded: 138sqft

#		Dimensions	sqft	Counted as living area
6	Living Room	17'2" x 17'8"	277 sq. ft	Yes
7	Bath	6'5" x 6'5"	41 sq. ft	Yes
8	Dining Area	13'0" x 12'0"	157 sq. ft	Yes
9	Primary Bedroom	12'2" x 10'9"	118 sq. ft	Yes
10	Bath	10'2" x 5'5"	55 sq. ft	Yes
11	Kitchen	13'0" x 10'3"	130 sq. ft	Yes
12	Foyer	12'11" x 6'5"	77 sq. ft	Yes
13	Laundry	6'5" x 2'11"	19 sq. ft	Yes
14	Screened Porch	9'8" x 14'2"	138 sq. ft	No
15	Hall	2'9" x 6'8"	25 sq. ft	Yes

Home data report

2924 R29 Road, Portland, United Counties of Leeds and Grenville, Ontario, Canada, K0G 1V0



Room dimensions

Floor 3

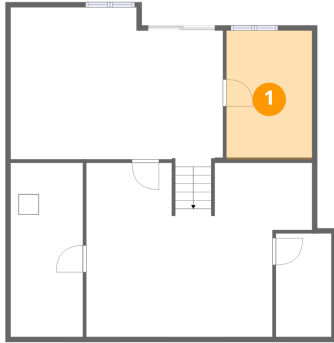
Total:904sqft

Excluded: 0sqft

#		Dimensions	sqft	Counted as living area
16	Bedroom	15'0" x 12'8"	173 sq. ft	Yes
17	Bedroom	14'10" x 12'10"	177 sq. ft	Yes
18	Bath	10'2" x 9'0"	90 sq. ft	Yes
19	Hall	11'1" x 19'9"	161 sq. ft	Yes
20	W.I.C.	6'2" x 5'3"	32 sq. ft	Yes
21	Bedroom	12'3" x 15'7"	190 sq. ft	Yes

2924 R29 Road, Portland, United Counties of Leeds and Grenville, Ontario, Canada, K0G 1V0

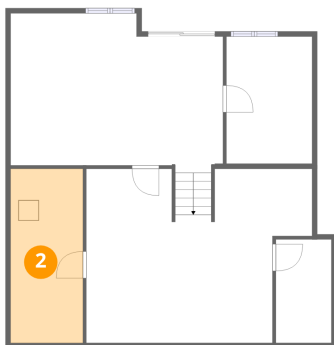
1 Floor 1 - Office



Dimensions: 8'5" x 12'5"
Area: 106 sq. ft
Counted as living area: No

Heated: Yes
Finished: Yes
Enclosed: Yes
Contiguous: No
Permitted: Yes
Wet space: No
Addition: No
Conversion: No

2 Floor 1 - Electrical Room

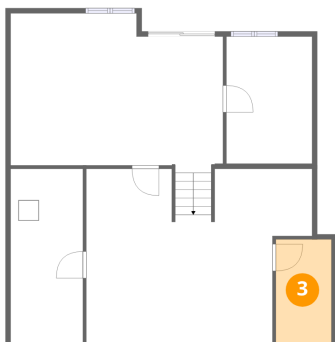


Dimensions: 7'1" x 17'1"
Area: 121 sq. ft
Counted as living area: No

Heated: No
Finished: No
Enclosed: Yes
Contiguous: Yes
Permitted: Yes
Wet space: No
Addition: No
Conversion: No

2924 R29 Road, Portland, United Counties of Leeds and Grenville, Ontario, Canada, K0G 1V0

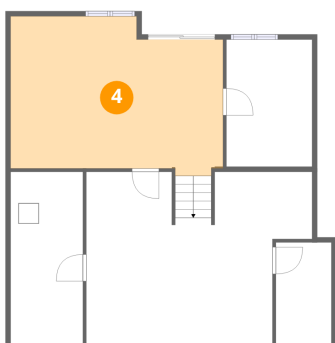
3 Floor 1 - Room



Dimensions: 5'5" x 10'1"
Area: 55 sq. ft
Counted as living area: No

Heated: Yes
Finished: Yes
Enclosed: Yes
Contiguous: No
Permitted: Yes
Wet space: No
Addition: No
Conversion: No

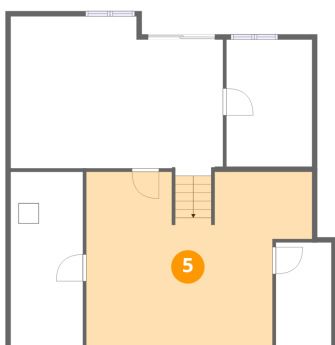
4 Floor 1 - Recreation Room



Dimensions: 20'10" x 14'11"
Area: 294 sq. ft
Counted as living area: No

Heated: Yes
Finished: Yes
Enclosed: Yes
Contiguous: No
Permitted: Yes
Wet space: No
Addition: No
Conversion: No

5 Floor 1 - Basement

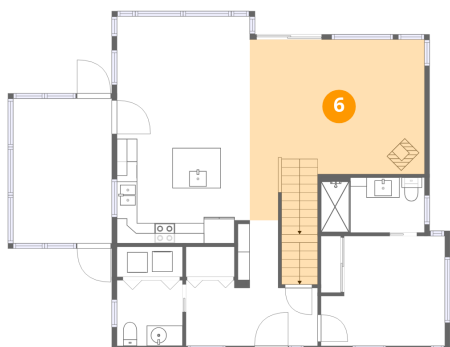


Dimensions: 22'1" x 17'0"
Area: 332 sq. ft
Counted as living area: No

Heated: Yes
Finished: No
Enclosed: Yes
Contiguous: Yes
Permitted: Yes
Wet space: No
Addition: No
Conversion: No

2924 R29 Road, Portland, United Counties of Leeds and Grenville, Ontario, Canada, K0G 1V0

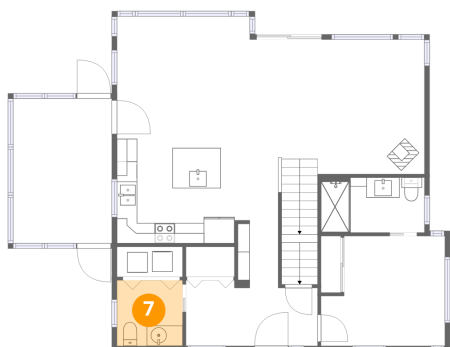
6 Floor 2 - Living Room



Dimensions: 17'2" x 17'8"
Area: 277 sq. ft
Counted as living area: Yes

Heated: Yes
Finished: Yes
Enclosed: Yes
Contiguous: Yes
Permitted: Yes
Wet space: No
Addition: No
Conversion: No

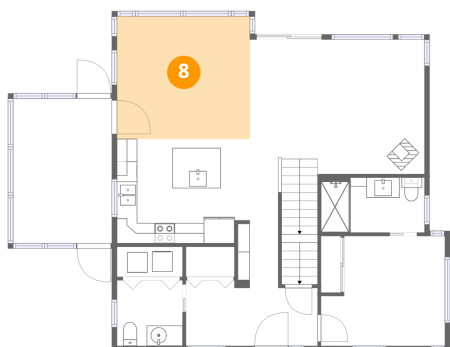
7 Floor 2 - Bath



Dimensions: 6'5" x 6'5"
Area: 41 sq. ft
Counted as living area: Yes

Heated: Yes
Finished: Yes
Enclosed: Yes
Contiguous: Yes
Permitted: Yes
Wet space: Yes
Addition: No
Conversion: No

8 Floor 2 - Dining Area

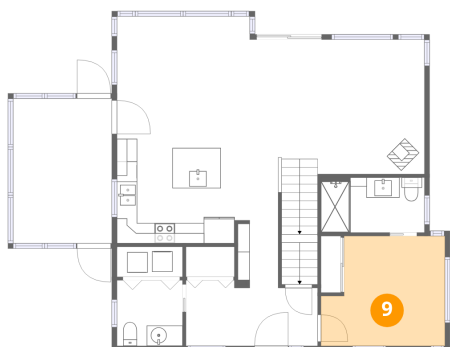


Dimensions: 13'0" x 12'0"
Area: 157 sq. ft
Counted as living area: Yes

Heated: Yes
Finished: Yes
Enclosed: Yes
Contiguous: Yes
Permitted: Yes
Wet space: No
Addition: No
Conversion: No

2924 R29 Road, Portland, United Counties of Leeds and Grenville, Ontario, Canada, K0G 1V0

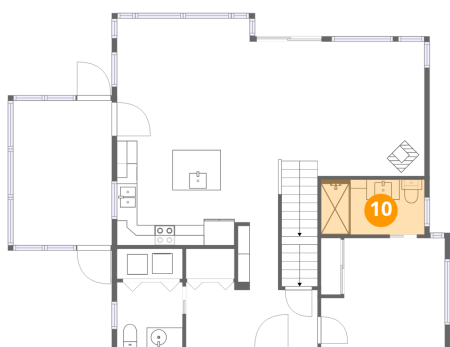
9 Floor 2 - Primary Bedroom



Dimensions: 12'2" x 10'9"
Area: 118 sq. ft
Counted as living area: Yes

Heated: Yes
Finished: Yes
Enclosed: Yes
Contiguous: Yes
Permitted: Yes
Wet space: No
Addition: No
Conversion: No

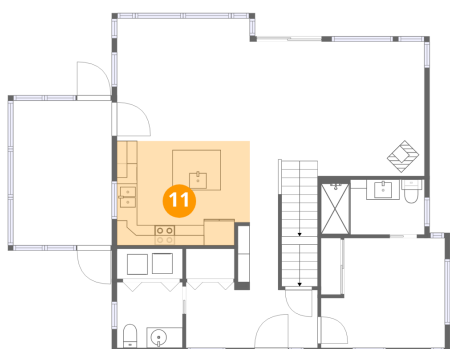
10 Floor 2 - Bath



Dimensions: 10'2" x 5'5"
Area: 55 sq. ft
Counted as living area: Yes

Heated: Yes
Finished: Yes
Enclosed: Yes
Contiguous: Yes
Permitted: Yes
Wet space: Yes
Addition: No
Conversion: No

11 Floor 2 - Kitchen

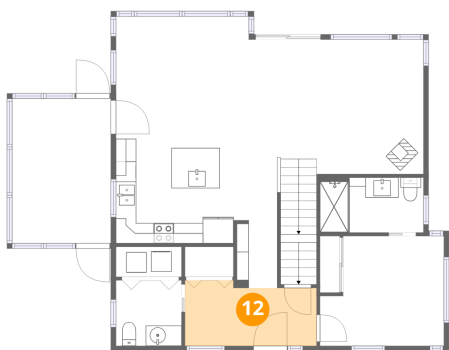


Dimensions: 13'0" x 10'3"
Area: 130 sq. ft
Counted as living area: Yes

Heated: Yes
Finished: Yes
Enclosed: Yes
Contiguous: Yes
Permitted: Yes
Wet space: No
Addition: No
Conversion: No

2924 R29 Road, Portland, United Counties of Leeds and Grenville, Ontario, Canada, K0G 1V0

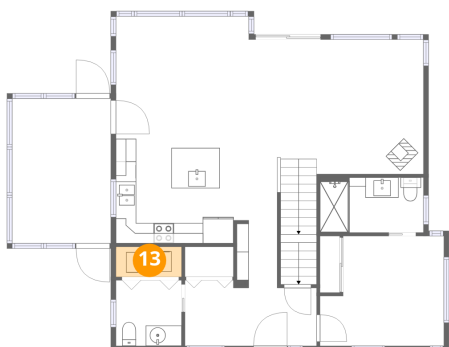
12 Floor 2 - Foyer



Dimensions: 12'11" x 6'5"
Area: 77 sq. ft
Counted as living area: Yes

Heated: Yes
Finished: Yes
Enclosed: Yes
Contiguous: Yes
Permitted: Yes
Wet space: No
Addition: No
Conversion: No

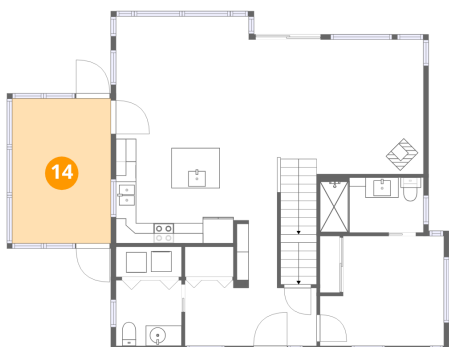
13 Floor 2 - Laundry



Dimensions: 6'5" x 2'11"
Area: 19 sq. ft
Counted as living area: Yes

Heated: Yes
Finished: Yes
Enclosed: Yes
Contiguous: Yes
Permitted: Yes
Wet space: No
Addition: No
Conversion: No

14 Floor 2 - Screened Porch

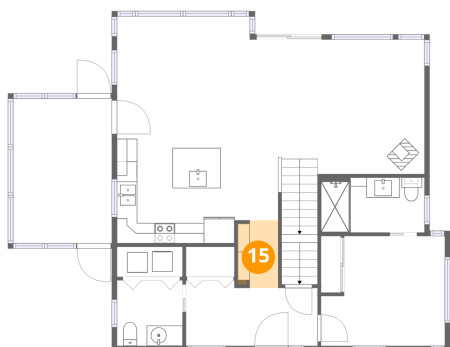


Dimensions: 9'8" x 14'2"
Area: 138 sq. ft
Counted as living area: No

Heated: No
Finished: No
Enclosed: No
Contiguous: Yes
Permitted: Yes
Wet space: No
Addition: No
Conversion: No

2924 R29 Road, Portland, United Counties of Leeds and Grenville, Ontario, Canada, K0G 1V0

15 Floor 2 - Hall



Dimensions: 2'9" x 6'8"
Area: 25 sq. ft
Counted as living area: Yes

Heated: Yes
Finished: Yes
Enclosed: Yes
Contiguous: Yes
Permitted: Yes
Wet space: No
Addition: No
Conversion: No

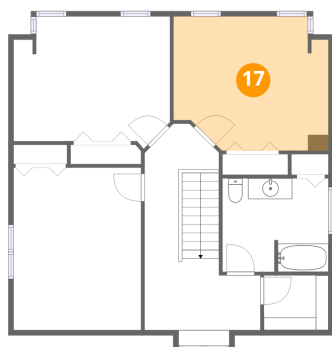
16 Floor 3 - Bedroom



Dimensions: 15'0" x 12'8"
Area: 173 sq. ft
Counted as living area: Yes

Heated: Yes
Finished: Yes
Enclosed: Yes
Contiguous: Yes
Permitted: Yes
Wet space: No
Addition: No
Conversion: No

17 Floor 3 - Bedroom

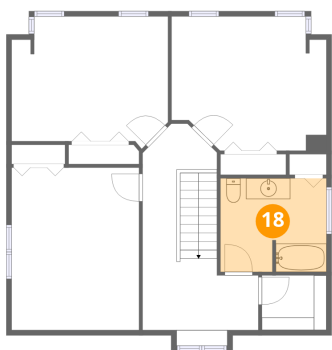


Dimensions: 14'10" x 12'10"
Area: 177 sq. ft
Counted as living area: Yes

Heated: Yes
Finished: Yes
Enclosed: Yes
Contiguous: Yes
Permitted: Yes
Wet space: No
Addition: No
Conversion: No

2924 R29 Road, Portland, United Counties of Leeds and Grenville, Ontario, Canada, K0G 1V0

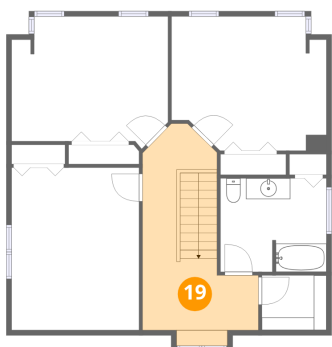
18 Floor 3 - Bath



Dimensions: 10'2" x 9'0"
Area: 90 sq. ft
Counted as living area: Yes

Heated: Yes
Finished: Yes
Enclosed: Yes
Contiguous: Yes
Permitted: Yes
Wet space: Yes
Addition: No
Conversion: No

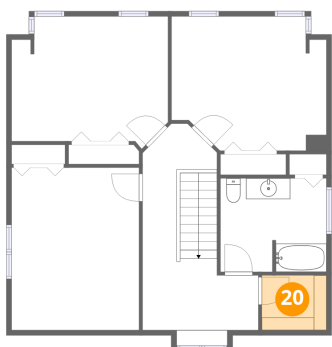
19 Floor 3 - Hall



Dimensions: 11'1" x 19'9"
Area: 161 sq. ft
Counted as living area: Yes

Heated: Yes
Finished: Yes
Enclosed: Yes
Contiguous: Yes
Permitted: Yes
Wet space: No
Addition: No
Conversion: No

20 Floor 3 - W.I.C.

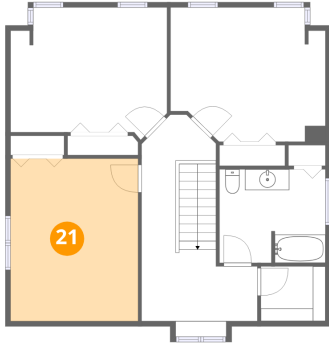


Dimensions: 6'2" x 5'3"
Area: 32 sq. ft
Counted as living area: Yes

Heated: Yes
Finished: Yes
Enclosed: Yes
Contiguous: Yes
Permitted: Yes
Wet space: No
Addition: No
Conversion: No

2924 R29 Road, Portland, United Counties of Leeds and
Grenville, Ontario, Canada, K0G 1V0

21 Floor 3 - Bedroom



Dimensions: 12'3" x 15'7"
Area: 190 sq. ft
Counted as living area: Yes

Heated: Yes
Finished: Yes
Enclosed: Yes
Contiguous: Yes
Permitted: Yes
Wet space: No
Addition: No
Conversion: No