

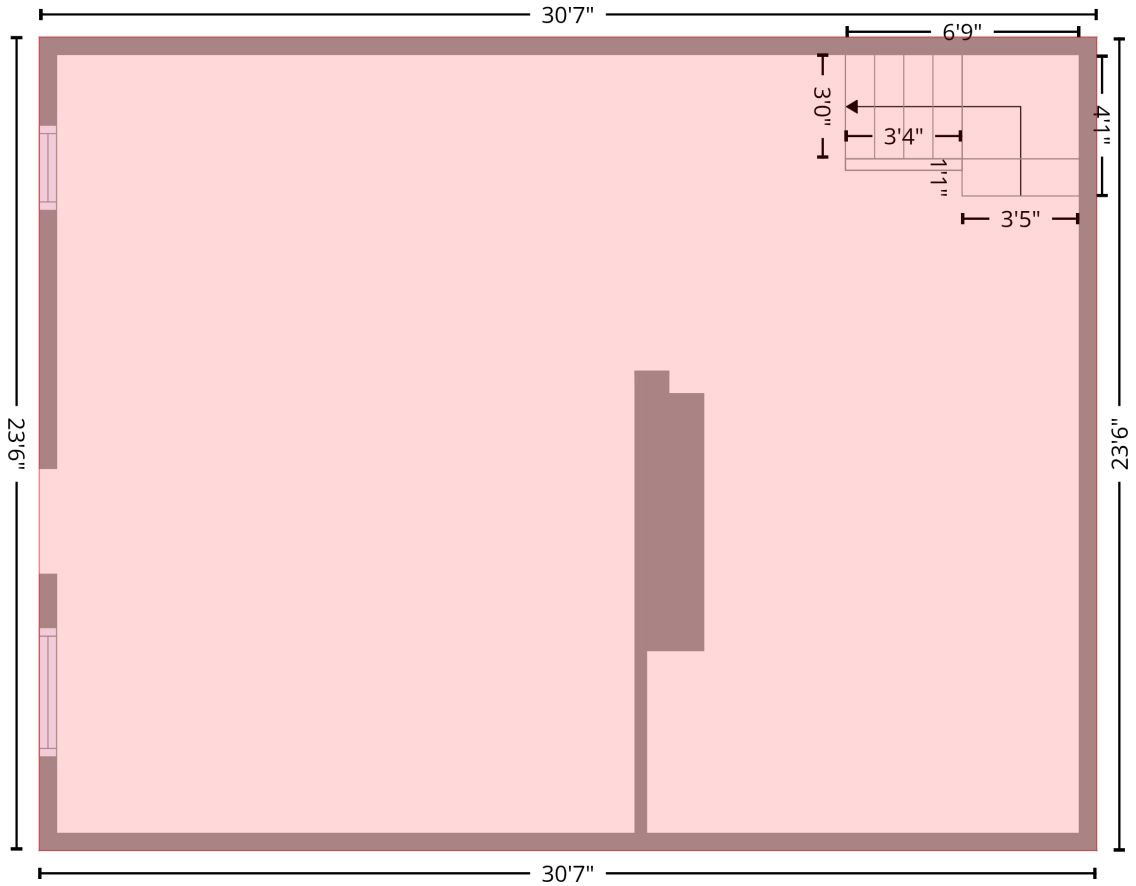
# 4316 Grandin Rd, Lenoir, NC, US

Gross Living Area: 1463 sq. ft

## Level 1 - Below Grade

Basement  
[AREA: 0]

BASEMENT (1)  
[AREA: 718]



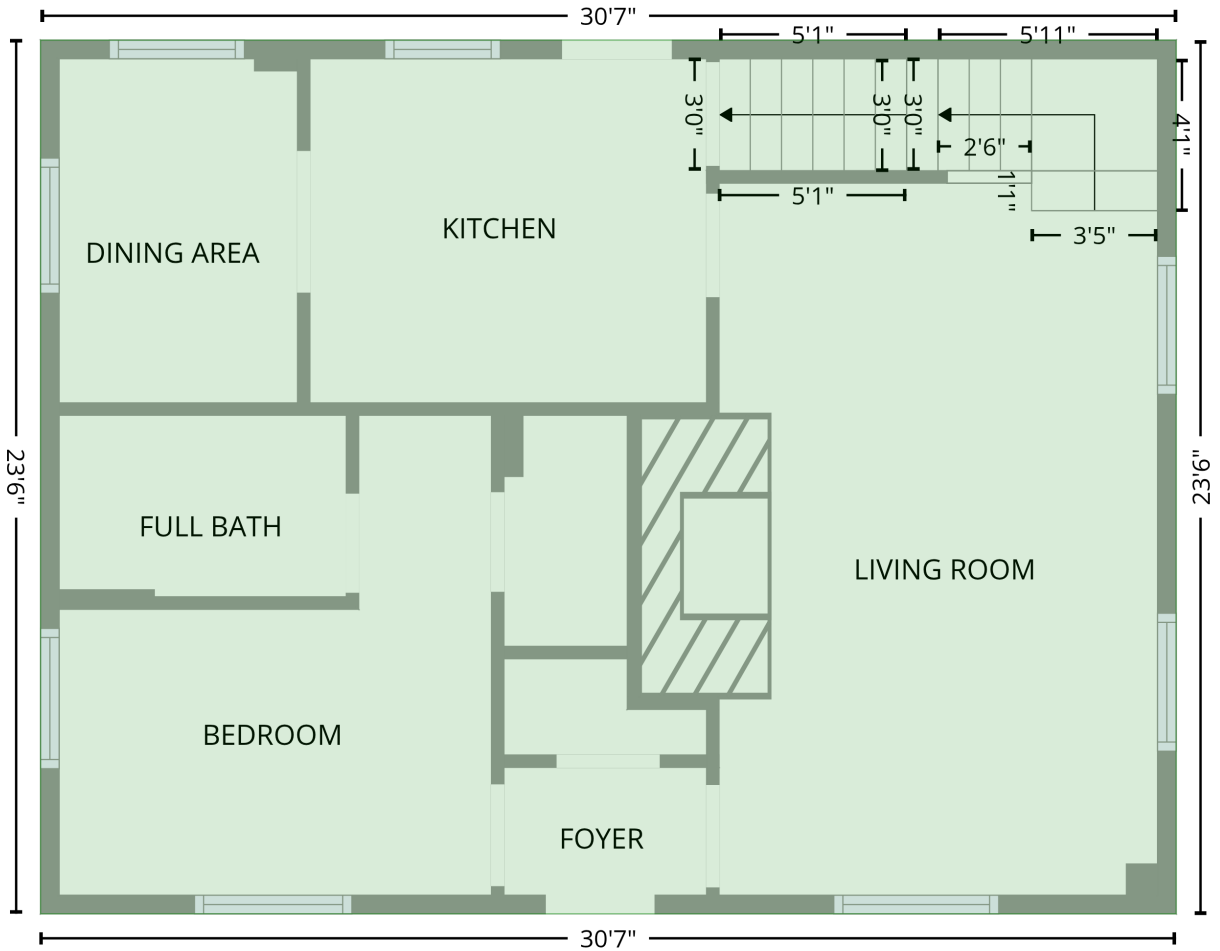
Space	Area (sq. ft)	Calculation <small>Coordinate Polygon Area Algorithm using inches</small>
BASEMENT (Non-living area)	718	$-((380.2 + 380.2) * (45.2 - 327.2) + (380.2 + 13.7) * (327.2 - 327.2) + (13.7 + 13.7) * (327.2 - 45.2) + (13.7 + 380.2) * (45.2 - 45.2)) * 0.5 * 0.00694$

# 4316 Grandin Rd, Lenoir, NC, US

Gross Living Area: 1463 sq. ft

## Level 2

1st floor  
[AREA: 718]



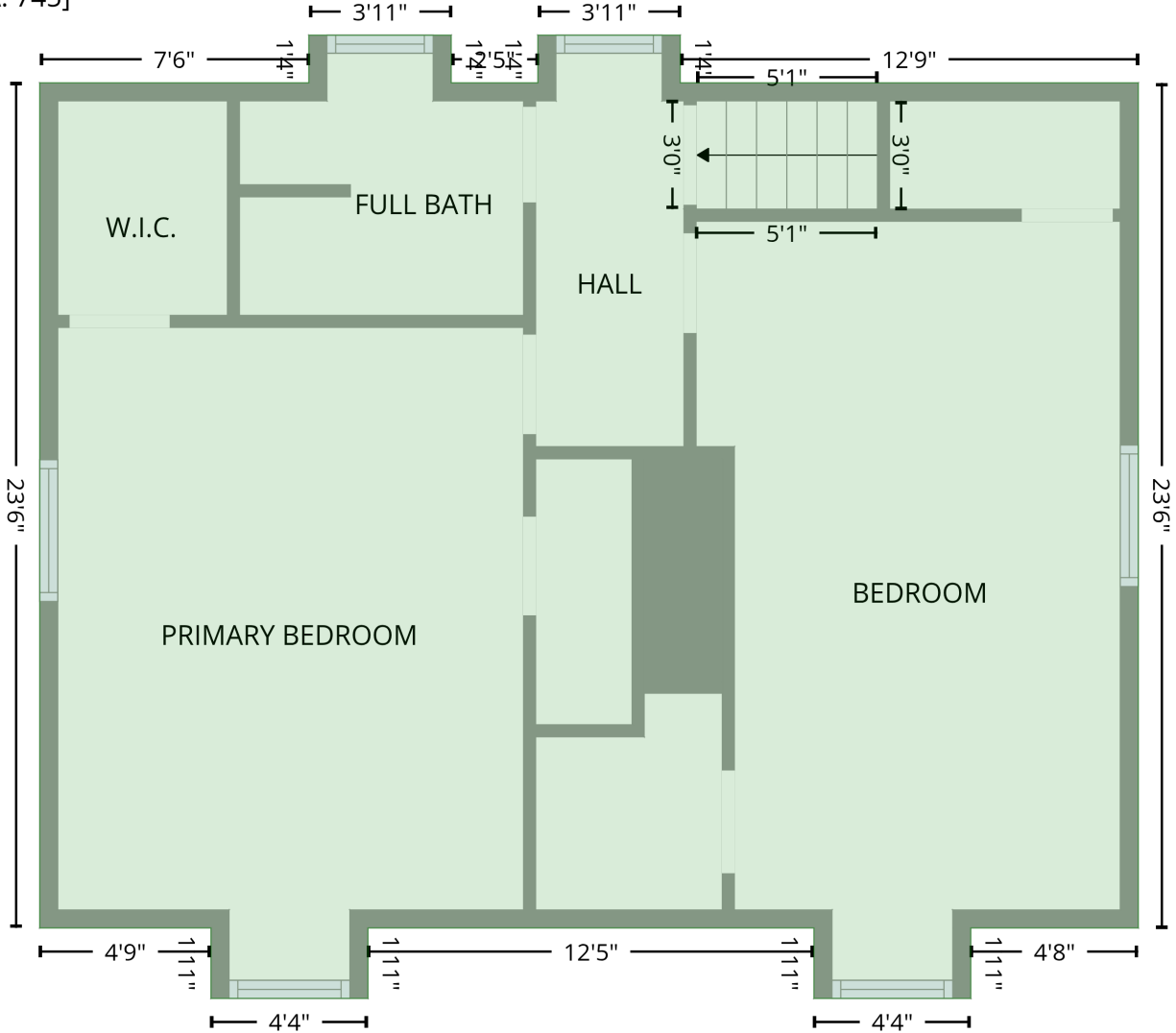
Space	Area (sq. ft)	Calculation <small>Coordinate Polygon Area Algorithm using inches</small>
1st floor (Living area)	718	$-\left((380.2 + 380.2) * (45.2 - 327.2) + (380.2 + 13.7) * (327.2 - 327.2) + (13.7 + 13.7) * (327.2 - 45.2) + (13.7 + 380.2) * (45.2 - 45.2)\right) * 0.5 * 0.00694$

# 4316 Grandin Rd, Lenoir, NC, US

Gross Living Area: 1463 sq. ft

## Level 3

2nd floor  
[AREA: 745]



Space	Area (sq. ft)	Calculation <small>Coordinate Polygon Area Algorithm using inches</small>
2nd floor (Living area)	745	$  \begin{aligned}  & -((151 + 151) * (29.3 - 45.2) + (151 + 179.9) * (45.2 - 45.2) + (179.9 + 179.9) * (45.2 - 29.3) + \\  & (179.9 + 227.4) * (29.3 - 29.3) + (227.4 + 227.4) * (29.3 - 45.2) + (227.4 + 380.2) * (45.2 - 45.2) + \\  & (380.2 + 380.2) * (45.2 - 327.2) + (380.2 + 324.4) * (327.2 - 327.2) + (324.4 + 324.4) * (327.2 - \\  & 350.7) + (324.4 + 272) * (350.7 - 350.7) + (272 + 272) * (350.7 - 327.2) + (272 + 123.2) * (327.2 - \\  & 327.2) + (123.2 + 123.2) * (327.2 - 350.7) + (123.2 + 70.8) * (350.7 - 350.7) + (70.8 + 70.8) * \\  & (350.7 - 327.2) + (70.8 + 13.7) * (327.2 - 327.2) + (13.7 + 13.7) * (327.2 - 45.2) + (13.7 + 103.5) * \\  & (45.2 - 45.2) + (103.5 + 103.5) * (45.2 - 29.3) + (103.5 + 151) * (29.3 - 29.3)) * 0.5 * 0.00694  \end{aligned}  $